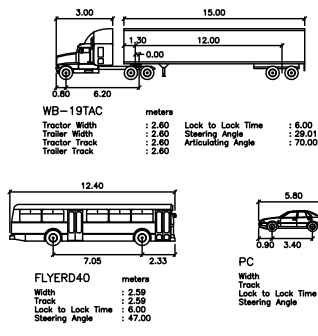
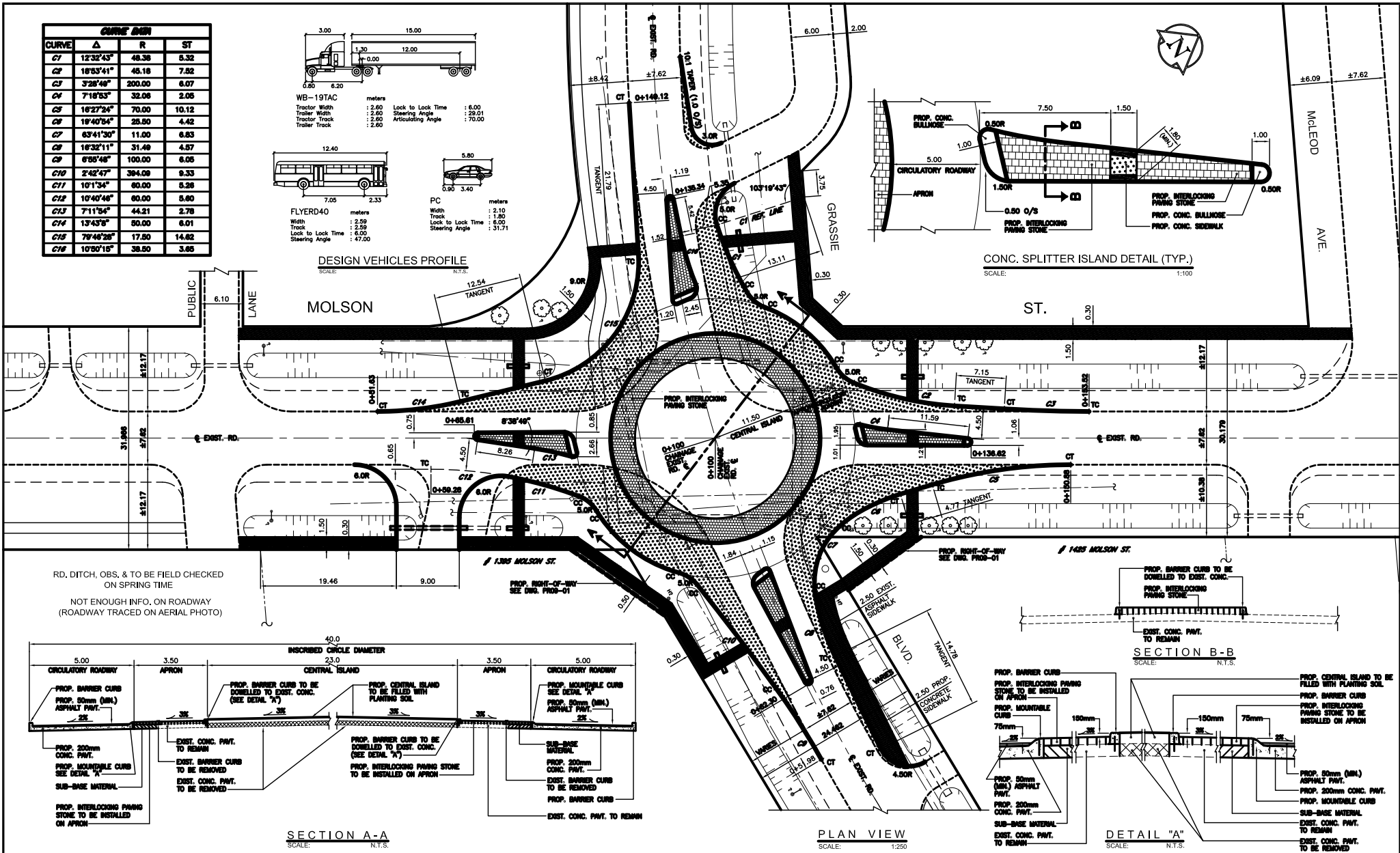
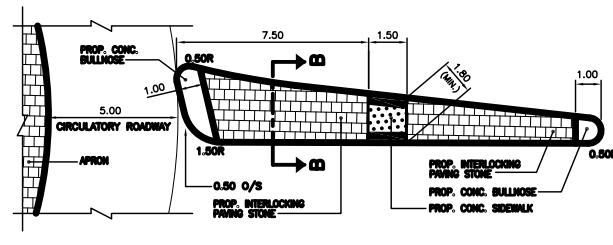


CURVE DATA			
CURVE	Δ	R	ST
C1	123°43'	48.38	8.32
C2	163°41'	48.18	7.52
C3	328°48'	200.00	6.07
C4	718°53'	32.06	2.05
C5	162°24'	70.00	10.12
C6	19°40'54"	25.50	4.42
C7	63°41'30"	11.00	6.83
C8	163°21'11"	31.49	4.57
C9	6°55'48"	100.00	6.06
C10	2°42'47"	394.08	9.33
C11	10°1'34"	60.00	5.28
C12	10°40'46"	60.00	5.80
C13	7°11'54"	44.21	2.78
C14	13°43'8"	50.00	6.01
C15	79°46'28"	17.50	14.82
C16	10°30'15"	38.50	3.85



DESIGN VEHICLES PROFILE  
SCALE: N.T.S.



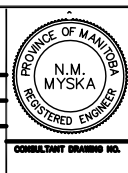
EXISTING	LEGEND	PROPOSED	LEGEND	PROPOSED
---	ROADWAY (CONCRETE PAVEMENT)	---	---	---
---	CONCRETE SIDEWALK	---	---	---
---	SIDEWALK RAMP	---	---	---
---	SHOULDER	---	---	---
---	RIGHT-OF-WAY	---	---	---
---	TRAFFIC SIGNAL CONTROLLER	---	---	---
---	TRAFFIC SIGNAL POLE	---	---	---
---	TRAFFIC SIGNAL PEDESTAL	---	---	---
---	LIGHT STANDARD	---	---	---
---	HYDRO WOOD POLE	---	---	---

LOCATION APPROVED	DATE
UNDERGROUND STRUCTURES	
SEPL. U/G STRUCTURES	
COMMITTEE	

NO.	REVISIONS	DATE	BY

PRELIMINARY

DESIGNED BY	N.M.	CHECKED BY	N.M.
DRAWN BY	J.G.	APPROVED BY	N.M.
HOR. SCALE AS NOTED		RELEASED FOR CONSTRUCTION	
VERTICAL	N.A.	DATE	06.12.04



THE CITY OF WINNIPEG  
 PUBLIC WORKS DEPARTMENT  
 TRANSPORTATION ENGINEERING DIVISION

Winnipeg

MOLSON ST.  
 AT  
 GRASSIE BLVD.  
 ROADWAY IMPROVEMENT

SHEET 1 OF 1  
 CAD FILE DRAWING NUMBER: T-3244A  
 CITY DRAWING NUMBER: T-3244A

RD: 90-11-1 & 90-11-2, 90-11-3, 90-11-4, 90-11-5, 90-11-6, 90-11-7, 90-11-8, 90-11-9, 90-11-10, 90-11-11, 90-11-12, 90-11-13, 90-11-14, 90-11-15, 90-11-16, 90-11-17, 90-11-18, 90-11-19, 90-11-20, 90-11-21, 90-11-22, 90-11-23, 90-11-24, 90-11-25, 90-11-26, 90-11-27, 90-11-28, 90-11-29, 90-11-30, 90-11-31, 90-11-32, 90-11-33, 90-11-34, 90-11-35, 90-11-36, 90-11-37, 90-11-38, 90-11-39, 90-11-40, 90-11-41, 90-11-42, 90-11-43, 90-11-44, 90-11-45, 90-11-46, 90-11-47, 90-11-48, 90-11-49, 90-11-50, 90-11-51, 90-11-52, 90-11-53, 90-11-54, 90-11-55, 90-11-56, 90-11-57, 90-11-58, 90-11-59, 90-11-60, 90-11-61, 90-11-62, 90-11-63, 90-11-64, 90-11-65, 90-11-66, 90-11-67, 90-11-68, 90-11-69, 90-11-70, 90-11-71, 90-11-72, 90-11-73, 90-11-74, 90-11-75, 90-11-76, 90-11-77, 90-11-78, 90-11-79, 90-11-80, 90-11-81, 90-11-82, 90-11-83, 90-11-84, 90-11-85, 90-11-86, 90-11-87, 90-11-88, 90-11-89, 90-11-90, 90-11-91, 90-11-92, 90-11-93, 90-11-94, 90-11-95, 90-11-96, 90-11-97, 90-11-98, 90-11-99, 90-11-100