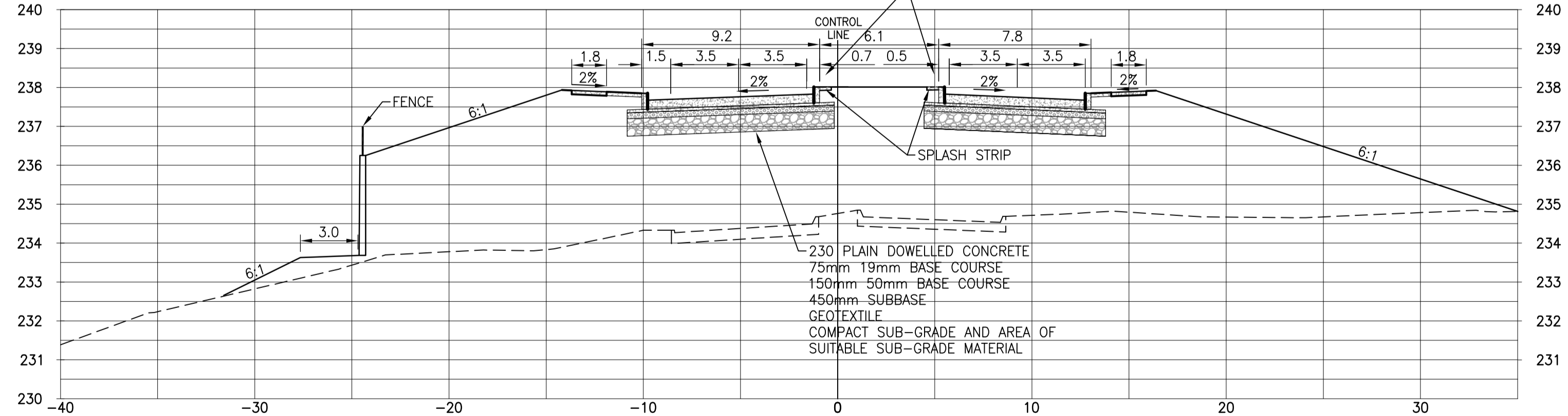
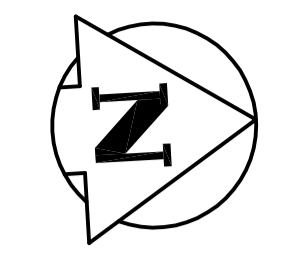
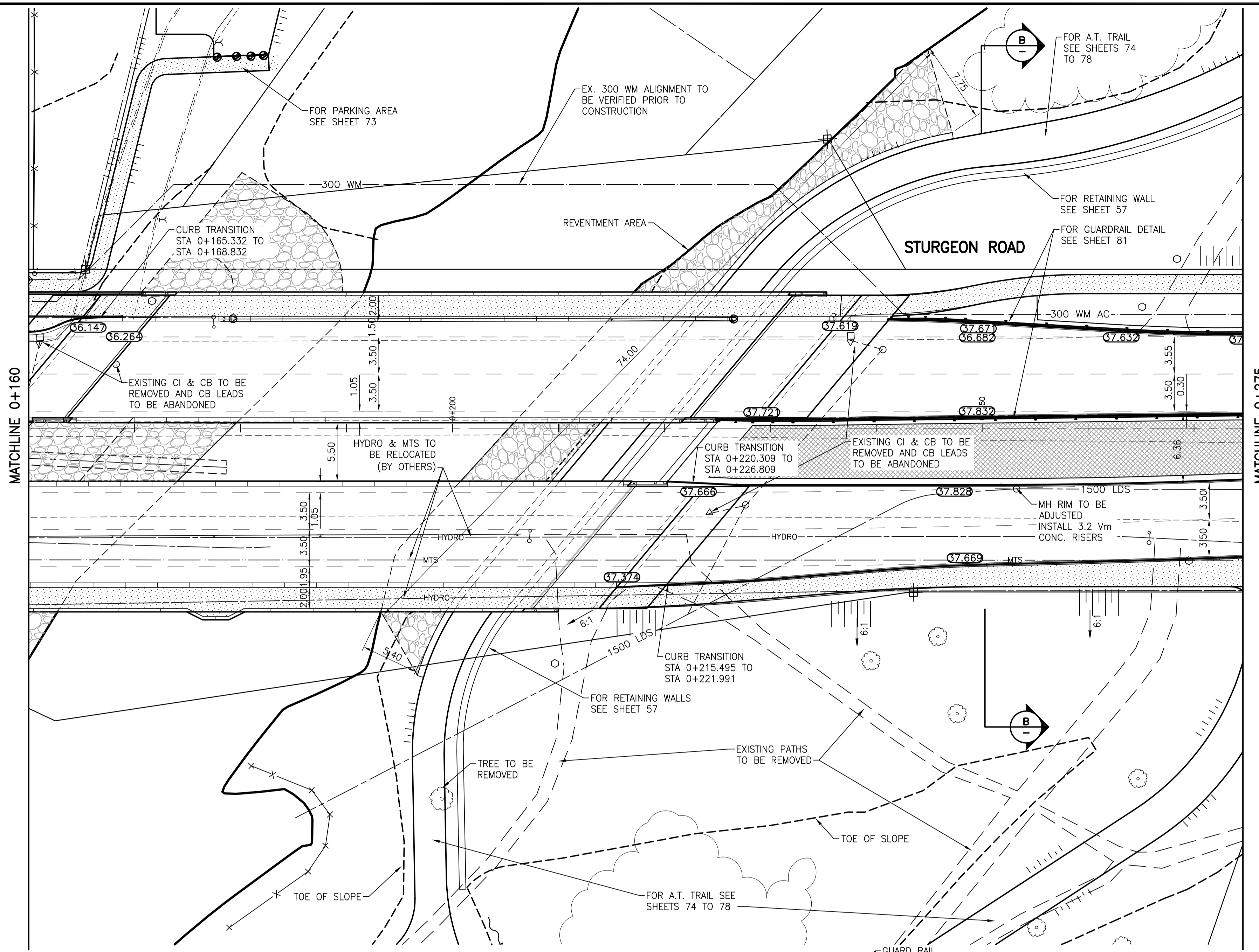


- NOTES:
- STREET LIGHTING AND WOODEN HYDRO POLES TO BE REMOVED BY HYDRO.



WARNING

IF POWER EQUIPMENT OR EXPLOSIVES ARE TO BE USED FOR EXCAVATION ON THIS PROJECT THE CONTRACTOR MUST:
 1) NOTIFY THE GAS COMPANY OF THE PROPOSED LOCATION OF EXCAVATION.
 2) TAKE PRECAUTION TO AVOID DAMAGE TO GAS COMPANY INSTALLATIONS.
 SEE PROVINCIAL REGULATION 140/92 FOR DETAILS

METRIC

WHOLE NUMBERS INDICATE MILLIMETRES
 DECIMALIZED NUMBERS INDICATE METRES

B SECTION AT STA 0+250
 1:200H 1:100V

83R498 - N. SIDE PORTAGE AVE. @ HARRIS BLVD., TBLT. ON TOP OF 0.05m DIA. X 2.4m IRON PIPE, 6.5m N. OF N. CURB LINE OF PORTAGE AVE., & 2.2m E. OF C.L. CONC. PAV'T. OF HARRIS BLVD. PRODUCED FROM THE S.

150 WM	WATERMAIN	150 WM	HYDRO	HYDRO	LEGEND-PLAN	PROPOSED
HYDRANT	HYDRANT	M.T.S.	M.T.S.	CONCRETE	CONCRETE	CONCRETE
VALVE	VALVE	CONCRETE	CONCRETE	ASPHALT	ASPHALT	ASPHALT
300 LDS	LAND DRAINAGE SEWER	300 LDS	SIDEWALK	SIDEWALK	SIDEWALK	SIDEWALK
250 WWS	WASTE WATER SEWER	250 WWS	DECORATIVE ROCK	DECORATIVE ROCK	DECORATIVE ROCK	DECORATIVE ROCK
MANHOLE	MANHOLE	PROPERTY LINE	PROPERTY LINE	SURVEY BAR	SURVEY BAR	SURVEY BAR
CATCH BASIN	CATCH BASIN	DITCH	DITCH	ELEVATION	ELEVATION	ELEVATION
CURB INLET	CURB INLET	SIDEWALK RAMP	SIDEWALK RAMP	CULVERT	CULVERT	CULVERT
JUNCTIONS	JUNCTIONS	LEGEND-PLAN	LEGEND-PLAN	GAS	GAS	GAS
LEGEND-PLAN	LEGEND-PLAN	PROPOSED	PROPOSED	EXISTING	EXISTING	EXISTING

LOCATION APPROVED UNDERGROUND STRUCTURES

SUPV. U/G STRUCTURES COMMITTEE DATE

NOTE:
 LOCATION OF UNDERGROUND STRUCTURES AS SHOWN ARE BASED ON THE BEST INFORMATION AVAILABLE BUT NO GUARANTEE IS GIVEN THAT ALL EXISTING UTILITIES ARE SHOWN OR THAT THE GIVEN LOCATIONS ARE EXACT. CONFIRMATION OF EXISTENCE AND EXACT LOCATION OF ALL SERVICES MUST BE OBTAINED FROM THE INDIVIDUAL UTILITIES BEFORE PROCEEDING WITH CONSTRUCTION.

B.M. 39-44	ELEV. 233.848 m
DESIGNED BY	V.M.M.
CHECKED BY	V.M.M.
DRAWN BY	T.G.
APPROVED BY	V.M.M.
HOR. SCALE:	1:250
VERTICAL:	1:10
ISSUED FOR TENDER	11.12.15 V.M.M.
NO. REVISIONS	DATE BY

Stantec Consulting Ltd.
 100-1355 Taylor Ave., Winnipeg, Manitoba
 Tel 204-928-8840 Fax 204-284-4795

DESIGNED BY: V.M.M.
 CHECKED BY: V.M.M.
 DRAWN BY: T.G.
 APPROVED BY: V.M.M.
 HOR. SCALE: 1:250
 VERTICAL: 1:10
 ISSUED FOR TENDER: 11.12.15 V.M.M.
 NO. REVISIONS: DATE BY

ENGINEER'S SEAL

CONSULTANT DRAWING NO. C-108

THE CITY OF WINNIPEG
 PUBLIC WORKS DEPARTMENT
 ENGINEERING DIVISION

STURGEON ROAD
 BRIDGE REPLACEMENT
 PORTAGE AVENUE TO HALLONQUIST DRIVE
 STA. 0+160 TO STA. 0+275
 HORIZONTAL ALIGNMENT

SHEET 66 OF 82
 CAD FILE DRAWING NUMBER 31590c-107-767.dwg
 CITY DRAWING NUMBER P-3331-04

V:\1127\winnipeg\11271950\working\11271950.dwg (V:\11271950\working\11271950.dwg) 2011 September 20, 2:28 p.m.