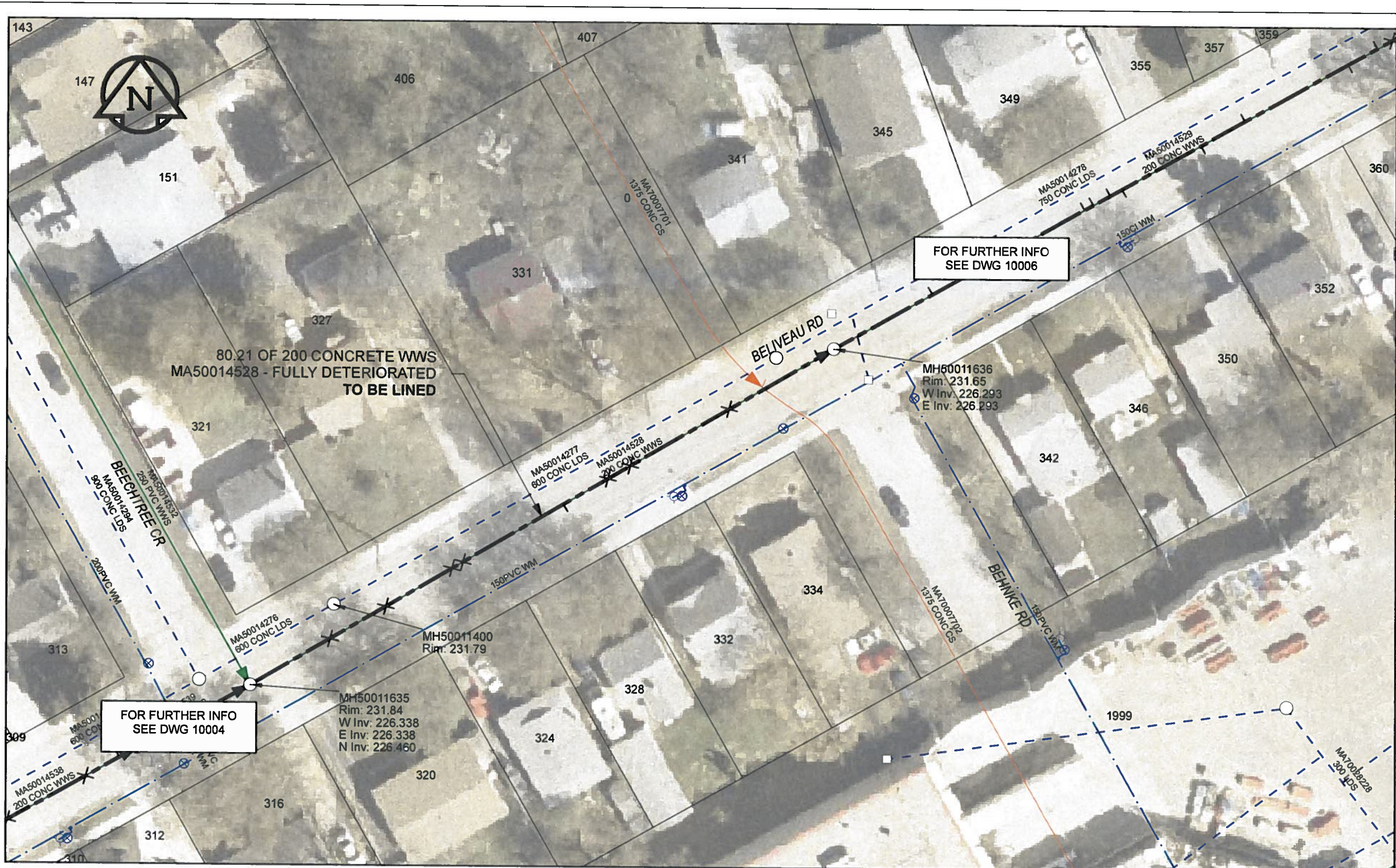


B SIZE 11" X 17" (279mm x 432mm)



SEWER JUNCTION INFORMATION

REF MH*	DIST FROM*	SIZE*	CLOCK AT*
MH50011635	11.00	150Ø	12
MH50011635	18.70	150Ø	12
MH50011635	27.80	150Ø	12
MH50011635	29.30	150Ø	12
MH50011635	43.10	150Ø	01
MH50011635	49.20	150Ø	12
MH50011635	52.30	150Ø	12
MH50011635	65.90	150Ø	12
MH50011635	78.20	150Ø	11

*JUNCTION INFORMATION FROM VIDEO INSPECTION

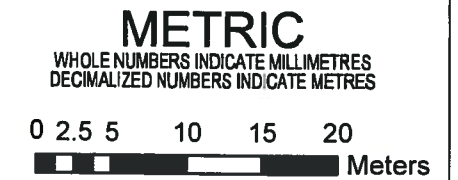
FOR FURTHER INFO SEE DWG 10006

FOR FURTHER INFO SEE DWG 10004

80.21 OF 200 CONCRETE WWS MA50014528 - FULLY DETERIORATED TO BE LINED

WARNING
 IF POWER EQUIPMENT OR EXPLOSIVES ARE TO BE USED FOR EXCAVATION ON THIS PROJECT, THE CONTRACTOR MUST:
 1) NOTIFY THE GAS COMPANY OF THE PROPOSED LOCATION OF EXCAVATION.
 2) TAKE PRECAUTION TO AVOID DAMAGE TO GAS COMPANY INSTALLATIONS.
 SEE PROVINCIAL REGULATION 140/92 FOR DETAILS

AECOM
 Certificate of Authorization
 AECOM Canada Ltd.
 No. 4671 Date: 12/02/16



BID OPPORTUNITY NO.1048-2011

AECOM REVIEW DRFT CHK

FILE NAME: 60224031-01-C-010-R0X.PDF Saved By: JZ

LOCATION APPROVED UNDERGROUND STRUCTURES

SUPR. U/G STRUCTURES COMMITTEE DATE

NOTE:
 LOCATION OF UNDERGROUND STRUCTURES AS SHOWN ARE BASED ON THE BEST INFORMATION AVAILABLE. BUT NO GUARANTEE IS GIVEN THAT ALL EXISTING UTILITIES ARE SHOWN OR THAT THE GIVEN LOCATIONS ARE EXACT. CONFIRMATION OF EXISTENCE AND EXACT LOCATION OF ALL SERVICES MUST BE OBTAINED FROM THE INDIVIDUAL UTILITIES BEFORE PROCEEDING WITH CONSTRUCTION.

Can-Net GPS Reference Station WINN/810

NO.	ISSUED FOR CONSTRUCTION	DATE	BY
0	ISSUED FOR CONSTRUCTION	12/02/21	JZ
	REVISIONS	YY/MM/DD	BY

AECOM

DESIGNED BY	ALD	CHECKED BY	PL
DRAWN BY	JZ	APPROVED BY	<i>[Signature]</i>
HOR. SCALE	1:500	RELEASED FOR CONSTRUCTION	<i>[Signature]</i>
VERT. SCALE	N/A	DATE	12/02/16

PROFESSIONAL'S SEAL

CONSULTANT DRAWING NO. 60224031-01-C-010-R0X.mxd

THE CITY OF WINNIPEG WATER AND WASTE DEPARTMENT

2011 WASTE WATER SEWER RENEWALS
 BY CIPP LINING
 CONTRACT 20
 BELIVEAU ROAD
 BEECHTREE CR (E LEG) TO BEHNKE RD

SHEET 10 OF 112
 CITY DRAWING NUMBER 10005 REV 0