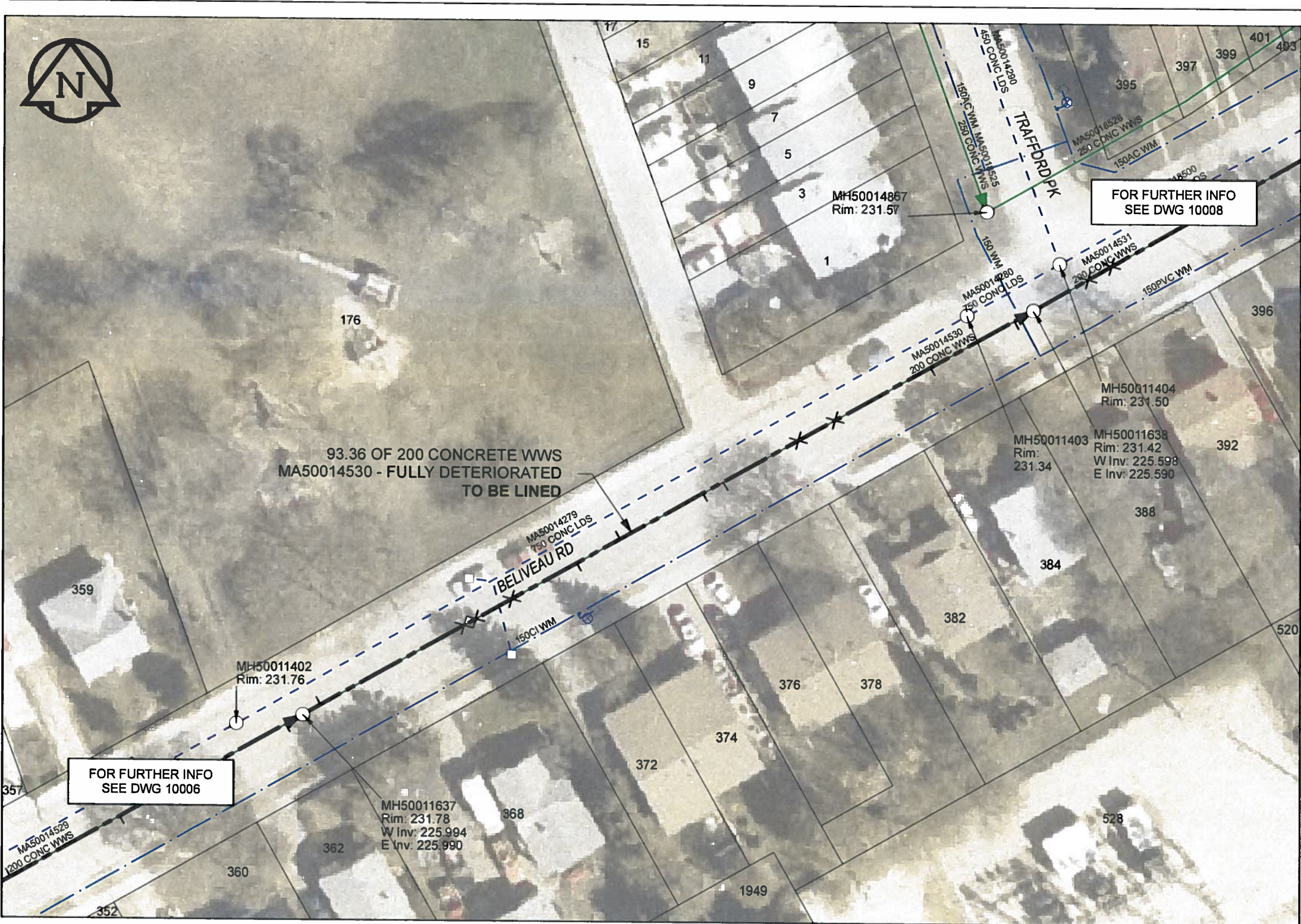


B SIZE 11" X 17" (279mm x 432mm)



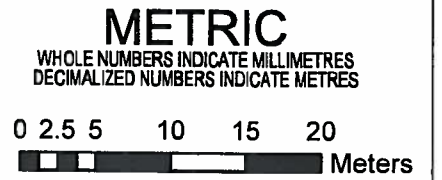
**SEWER JUNCTION INFORMATION**

REF MH*	DIST FROM*	SIZE*	CLOCK AT*
MH50011637	2.30	150Ø	11
MH50011637	20.60	150Ø	12
MH50011637	22.10	150Ø	12
MH50011637	26.70	150Ø	12
MH50011637	35.00	150Ø	01
MH50011637	40.50	150Ø	11
MH50011637	51.10	150Ø	01
MH50011637	53.70	150Ø	02
MH50011637	63.30	150Ø	12
MH50011637	68.00	150Ø	12
MH50011637	80.20	150Ø	01
MH50011637	90.90	150Ø	01

\*JUNCTION INFORMATION FROM VIDEO INSPECTION

**WARNING**  
 IF POWER EQUIPMENT OR EXPLOSIVES ARE TO BE USED FOR EXCAVATION ON THIS PROJECT, THE CONTRACTOR MUST:  
 1) NOTIFY THE GAS COMPANY OF THE PROPOSED LOCATION OF EXCAVATION.  
 2) TAKE PRECAUTION TO AVOID DAMAGE TO GAS COMPANY INSTALLATIONS.  
 SEE PROVINCIAL REGULATION 140/92 FOR DETAILS

**AECOM**  
 Certificate of Authorization  
 AECOM Canada Ltd.  
 No. 4671 Date: 12/02/16



BID OPPORTUNITY NO.1048-2011

AECOM REVIEW DRFT CHK

FILE NAME: 60224031-01-C-012-R0X.PDF Saved By: JZ

**LOCATION APPROVED UNDERGROUND STRUCTURES**

SUPR. U/G STRUCTURES COMMITTEE	DATE

NOTE:  
 LOCATION OF UNDERGROUND STRUCTURES AS SHOWN ARE BASED ON THE BEST INFORMATION AVAILABLE. BUT NO GUARANTEE IS GIVEN THAT ALL EXISTING UTILITIES ARE SHOWN OR THAT THE GIVEN LOCATIONS ARE EXACT. CONFIRMATION OF EXISTENCE AND EXACT LOCATION OF ALL SERVICES MUST BE OBTAINED FROM THE INDIVIDUAL UTILITIES BEFORE PROCEEDING WITH CONSTRUCTION.

NO.	REVISIONS	YY/MM/DD	BY
0	ISSUED FOR CONSTRUCTION	12/02/21	JZ

**AECOM**

DESIGNED BY	ALD	CHECKED BY	PC
DRAWN BY	JZ	APPROVED BY	<i>[Signature]</i>
HOR. SCALE	1:500	RELEASED FOR CONSTRUCTION	<i>[Signature]</i>
VERT. SCALE	N/A	DATE	12/02/16

PROFESSIONAL'S SEAL  
 PROVINCE OF MANITOBA  
 K. FITCHETT  
 Feb 16/12  
 REGISTERED ENGINEER  
 CONSULTANT DRAWING NO. 60224031-01-C-012-R0X.mxd

**THE CITY OF WINNIPEG WATER AND WASTE DEPARTMENT**

2011 WASTE WATER SEWER RENEWALS  
 BY CIPP LINING  
 CONTRACT 20  
 BELIVEAU ROAD  
 93.4m W OF TRAFFORD PK TO TRAFFORD PK

SHEET 12 OF 112  
 CITY DRAWING NUMBER 10007 REV 0