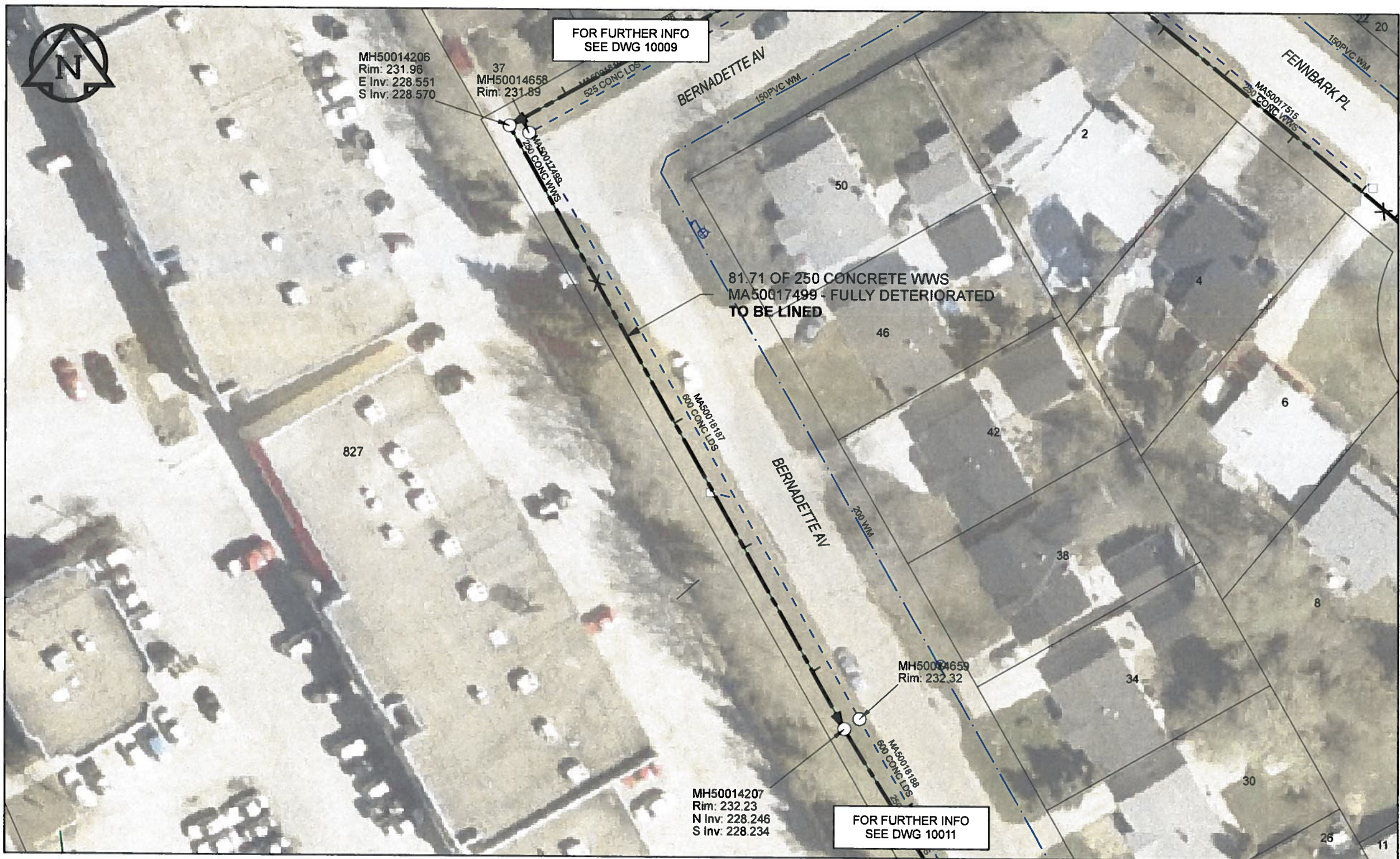


B SIZE 11" X 17" (279mm x 432mm)



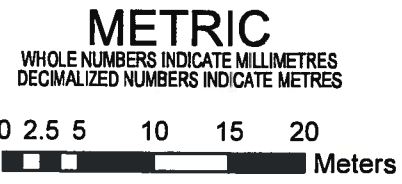
**SEWER JUNCTION INFORMATION**

REF MH*	DIST FROM* REF MH	SIZE*	CLOCK AT*
MH50014206	21.30	1500	12
MH50014206	40.30	1500	10
MH50014206	57.20	1500	10
MH50014206	73.90	1500	11

\*JUNCTION INFORMATION FROM VIDEO INSPECTION

**WARNING**  
 IF POWER EQUIPMENT OR EXPLOSIVES ARE TO BE USED FOR EXCAVATION ON THIS PROJECT, THE CONTRACTOR MUST:  
 1) NOTIFY THE GAS COMPANY OF THE PROPOSED LOCATION OF EXCAVATION  
 2) TAKE PRECAUTION TO AVOID DAMAGE TO GAS COMPANY INSTALLATIONS.  
 SEE PROVINCIAL REGULATION 140/92 FOR DETAILS

**AECOM**  
 Certificate of Authorization  
 AECOM Canada Ltd.  
 No. 4671 Date: 12/02/12



BID OPPORTUNITY NO.1048-2011

AECOM REVIEW DRFT CHK

FILE NAME: 60224031-01-C-015-R0X.PDF Saved By: JZ

**LOCATION APPROVED UNDERGROUND STRUCTURES**

SUPR. U/G STRUCTURES COMMITTEE	DATE

**NOTE:**  
 LOCATION OF UNDERGROUND STRUCTURES AS SHOWN ARE BASED ON THE BEST INFORMATION AVAILABLE. BUT NO GUARANTEE IS GIVEN THAT ALL EXISTING UTILITIES ARE SHOWN OR THAT THE GIVEN LOCATIONS ARE EXACT. CONFIRMATION OF EXISTENCE AND EXACT LOCATION OF ALL SERVICES MUST BE OBTAINED FROM THE INDIVIDUAL UTILITIES BEFORE PROCEEDING WITH CONSTRUCTION.

Can-Net GPS Reference Station WINN/810

NO.	REVISIONS	YYMMDD	BY
0	ISSUED FOR CONSTRUCTION	12/02/21	JZ

**AECOM**

DESIGNED BY	ALD	CHECKED BY	PL
DRAWN BY	JZ	APPROVED BY	<i>Bryan Leblond</i>
HOR. SCALE	1:500	RELEASED FOR CONSTRUCTION	<i>AB 2/17/12</i>
VERT. SCALE	N/A	DATE	12/02/12

PROFESSIONAL'S SEAL  
 PROVINCE OF MANITOBA  
  
 CONSULTANT DRAWING NO.  
 60224031-01-C-015-R0X.mxd

**THE CITY OF WINNIPEG WATER AND WASTE DEPARTMENT**

2011 WASTE WATER SEWER RENEWALS  
 BY CIPP LINING  
 CONTRACT 20  
 BERNADETTE AV (W LEG)  
 82.0m S OF BERNADETTE AV (N LEG) TO BERNADETTE AV (N LEG)

SHEET 15 OF 112  
 CITY DRAWING NUMBER  
 10010 REV 0