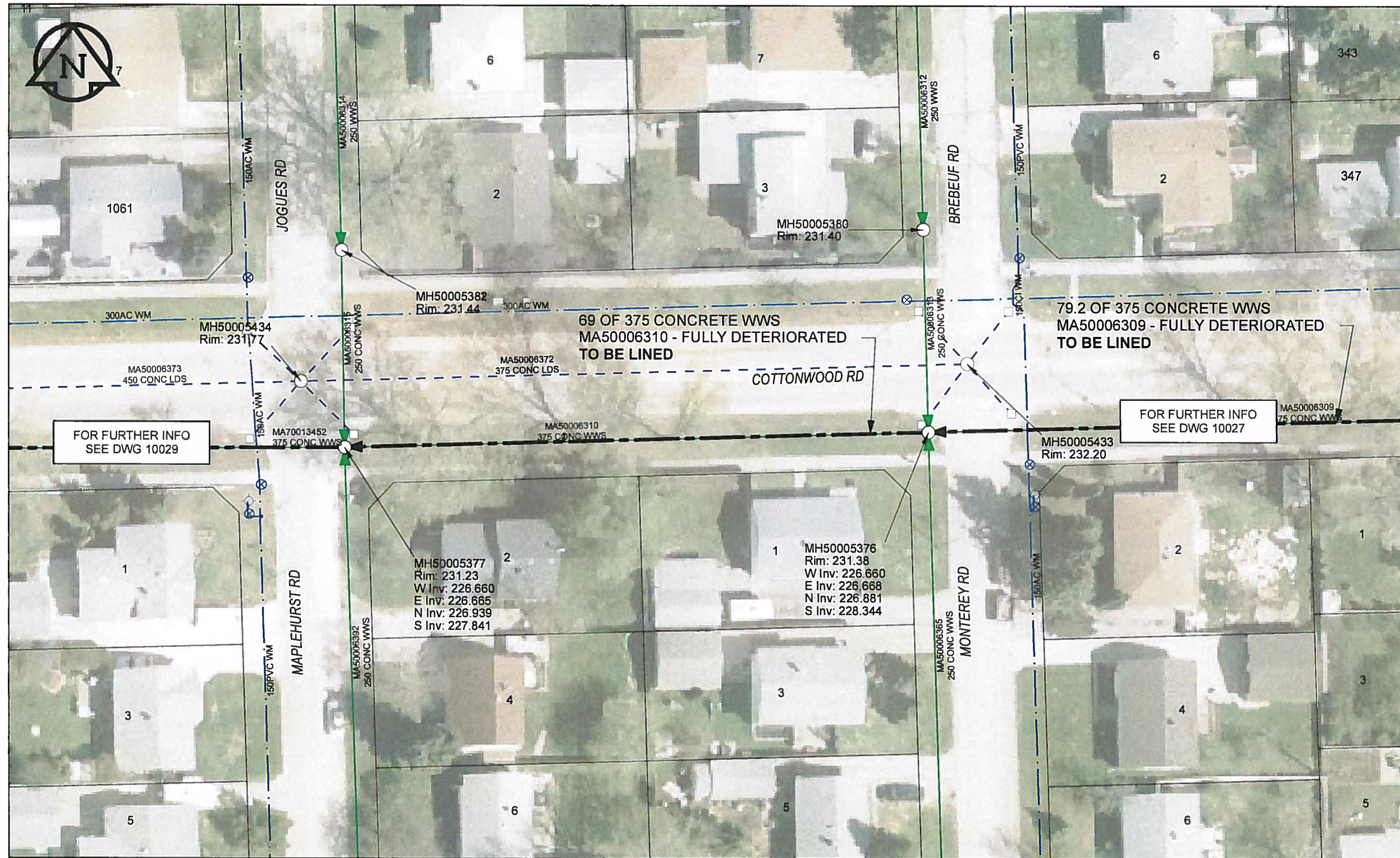


B SIZE 11" X 17" (279mm x 432mm)



SEWER JUNCTION INFORMATION

REF MH*	DIST	FROM* REF	SIZE*	CLOCK AT*
MH50005376	43.00	MH	150Ø	01

*JUNCTION INFORMATION FROM VIDEO INSPECTION

FOR FURTHER INFO SEE DWG 10029

FOR FURTHER INFO SEE DWG 10027

WARNING
 IF POWER EQUIPMENT OR EXPLOSIVES ARE TO BE USED FOR EXCAVATION ON THIS PROJECT, THE CONTRACTOR MUST:
 1) NOTIFY THE GAS COMPANY OF THE PROPOSED LOCATION OF EXCAVATION
 2) TAKE PRECAUTION TO AVOID DAMAGE TO GAS COMPANY INSTALLATIONS
 SEE PROVINCIAL REGULATION 140/92 FOR DETAILS

AECOM
 Certificate of Authorization
 AECOM Canada Ltd.
 No. 4671 Date: 12/02/11

METRIC
 WHOLE NUMBERS INDICATE MILLIMETRES
 DECIMALIZED NUMBERS INDICATE METRES

0 2.5 5 10 15 20
 Meters

BID OPPORTUNITY NO.1048-2011

AECOM REVIEW DRFT CHK

FILE NAME: 60224031-01-C-033-ROX.PDF Saved By: JZ

LOCATION APPROVED UNDERGROUND STRUCTURES

SUPR. U/G STRUCTURES DATE COMMITTEE

NOTE:
 LOCATION OF UNDERGROUND STRUCTURES AS SHOWN ARE BASED ON THE BEST INFORMATION AVAILABLE. BUT NO GUARANTEE IS GIVEN THAT ALL EXISTING UTILITIES ARE SHOWN OR THAT THE GIVEN LOCATIONS ARE EXACT. CONFIRMATION OF EXISTENCE AND EXACT LOCATION OF ALL SERVICES MUST BE OBTAINED FROM THE INDIVIDUAL UTILITIES BEFORE PROCEEDING WITH CONSTRUCTION.

Can-Net GPS Reference Station WINN/810

NO.	ISSUED FOR CONSTRUCTION	YYMM/DD	BY
0	ISSUED FOR CONSTRUCTION	12/02/21	JZ
	REVISIONS		

AECOM

DESIGNED BY	ALD	CHECKED BY	<i>RL</i>
DRAWN BY	JZ	APPROVED BY	<i>Benjamin Leblanc</i>
HOR. SCALE	1:500	RELEASED FOR CONSTRUCTION	<i>12/02/11</i>
VERT. SCALE	N/A	DATE	<i>12/02/11</i>

PROFESSIONAL'S SEAL

PROVINCE OF MANITOBA
RWA K.
FITCHETT
Feb 11/12
 REGISTERED ENGINEER

CONSULTANT DRAWING NO. 60224031-01-C-033-ROX.mxd

THE CITY OF WINNIPEG WATER AND WASTE DEPARTMENT

2011 WASTE WATER SEWER RENEWALS
 BY CIPP LINING
 CONTRACT 20
 COTTONWOOD RD
 MONTEREY RD TO MAPLEHURST RD

SHEET 33 OF 112
 CITY DRAWING NUMBER
10028 REV 0