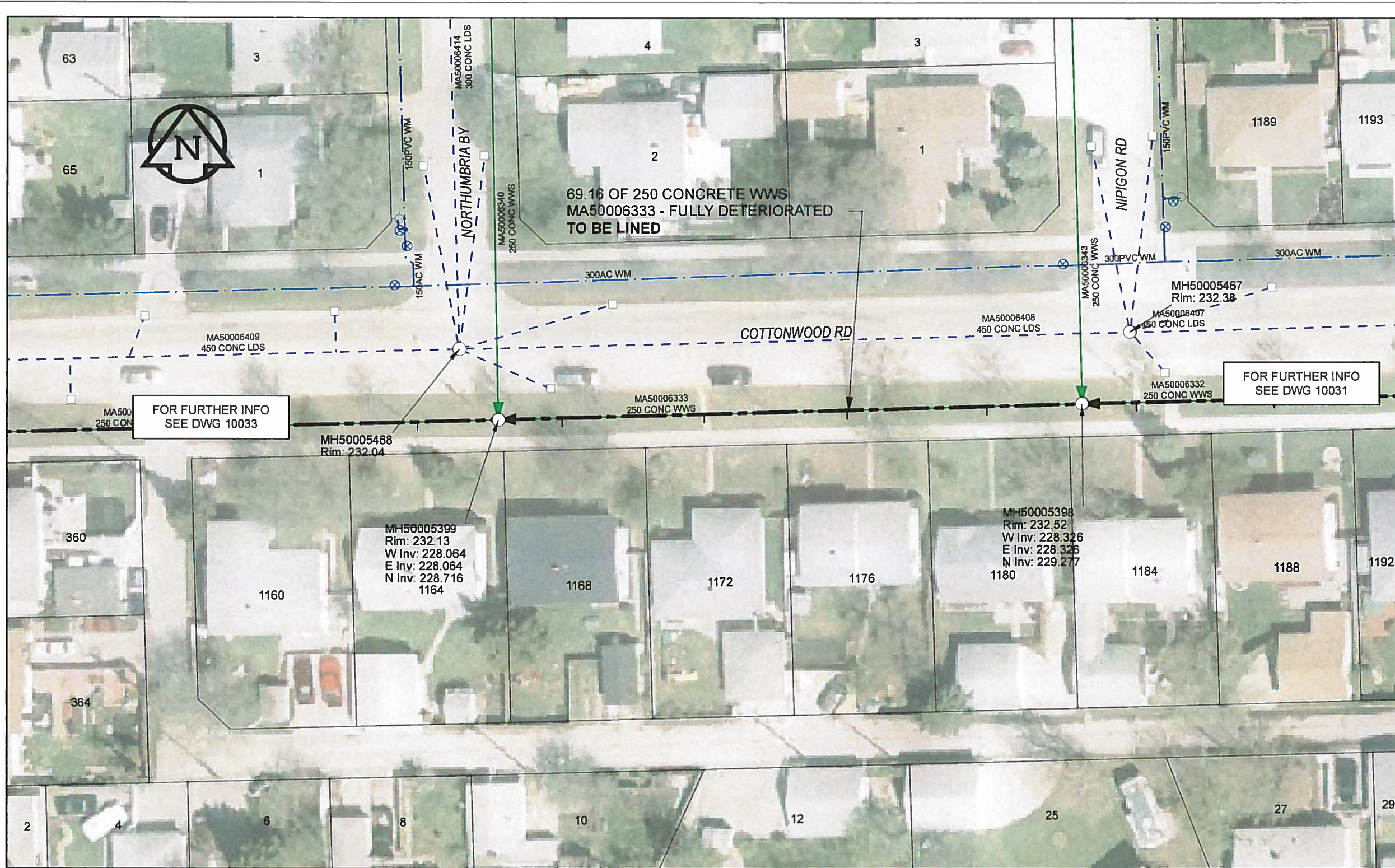


B SIZE 11" X 17" (279mm x 432mm)

FILE NAME: 60224031-01-C-037-R0X.PDF Saved By: JZ



**SEWER JUNCTION INFORMATION**

REF MH*	DIST FROM* REF MH	SIZE*	CLOCK AT*
MH50005398	11.30	150Ø	10
MH50005398	27.90	150Ø	10
MH50005398	44.80	150Ø	10
MH50005398	61.60	150Ø	10

\*JUNCTION INFORMATION FROM VIDEO INSPECTION

**WARNING**  
IF POWER EQUIPMENT OR EXPLOSIVES ARE TO BE USED FOR EXCAVATION ON THIS PROJECT, THE CONTRACTOR MUST  
1) NOTIFY THE GAS COMPANY OF THE PROPOSED LOCATION OF EXCAVATION  
2) TAKE PRECAUTION TO AVOID DAMAGE TO GAS COMPANY INSTALLATIONS  
SEE PROVINCIAL REGULATION 140/92 FOR DETAILS

**AECOM**  
Certificate of Authorization  
AECOM Canada Ltd.  
No. 4671 Date: 12/02/16

**METRIC**  
WHOLE NUMBERS INDICATE MILLIMETRES  
DECIMAL ZED NUMBERS INDICATE METRES

0 2.5 5 10 15 20  
Meters

BID OPPORTUNITY NO.1048-2011

**LOCATION APPROVED UNDERGROUND STRUCTURES**

SUPR. U/G STRUCTURES COMMITTEE DATE  
**NOTE:**  
LOCATION OF UNDERGROUND STRUCTURES AS SHOWN ARE BASED ON THE BEST INFORMATION AVAILABLE. BUT NO GUARANTEE IS GIVEN THAT ALL EXISTING UTILITIES ARE SHOWN OR THAT THE GIVEN LOCATIONS ARE EXACT. CONFIRMATION OF EXISTENCE AND EXACT LOCATION OF ALL SERVICES MUST BE OBTAINED FROM THE INDIVIDUAL UTILITIES BEFORE PROCEEDING WITH CONSTRUCTION.

Can-Net GPS Reference Station WINN/810

NO.	ISSUED FOR CONSTRUCTION	YY/MM/DD	BY
0	ISSUED FOR CONSTRUCTION	12/02/21	JZ
	REVISIONS	YY/MM/DD	BY

**AECOM**

DESIGNED BY	ALD	CHECKED BY	PL
DRAWN BY	JZ	APPROVED BY	Byron Lelshorn
HOR. SCALE	1:500	RELEASED FOR CONSTRUCTION	
VERT. SCALE	N/A	DATE	12/17/12
DATE	12/02/16		

PROFESSIONAL'S SEAL  
PROVINCE OF MANITOBA  
K. FITCHETT  
REGISTERED ENGINEER  
CONSULTANT DRAWING NO.  
60224031-01-C-037-R0X.mxd

**THE CITY OF WINNIPEG WATER AND WASTE DEPARTMENT**

2011 WASTE WATER SEWER RENEWALS  
BY CIPP LINING  
CONTRACT 20  
COTTONWOOD RD  
NIPIGON RD TO NORTHUMBRIA BY

SHEET 37 OF 112  
CITY DRAWING NUMBER  
**10032** REV 0