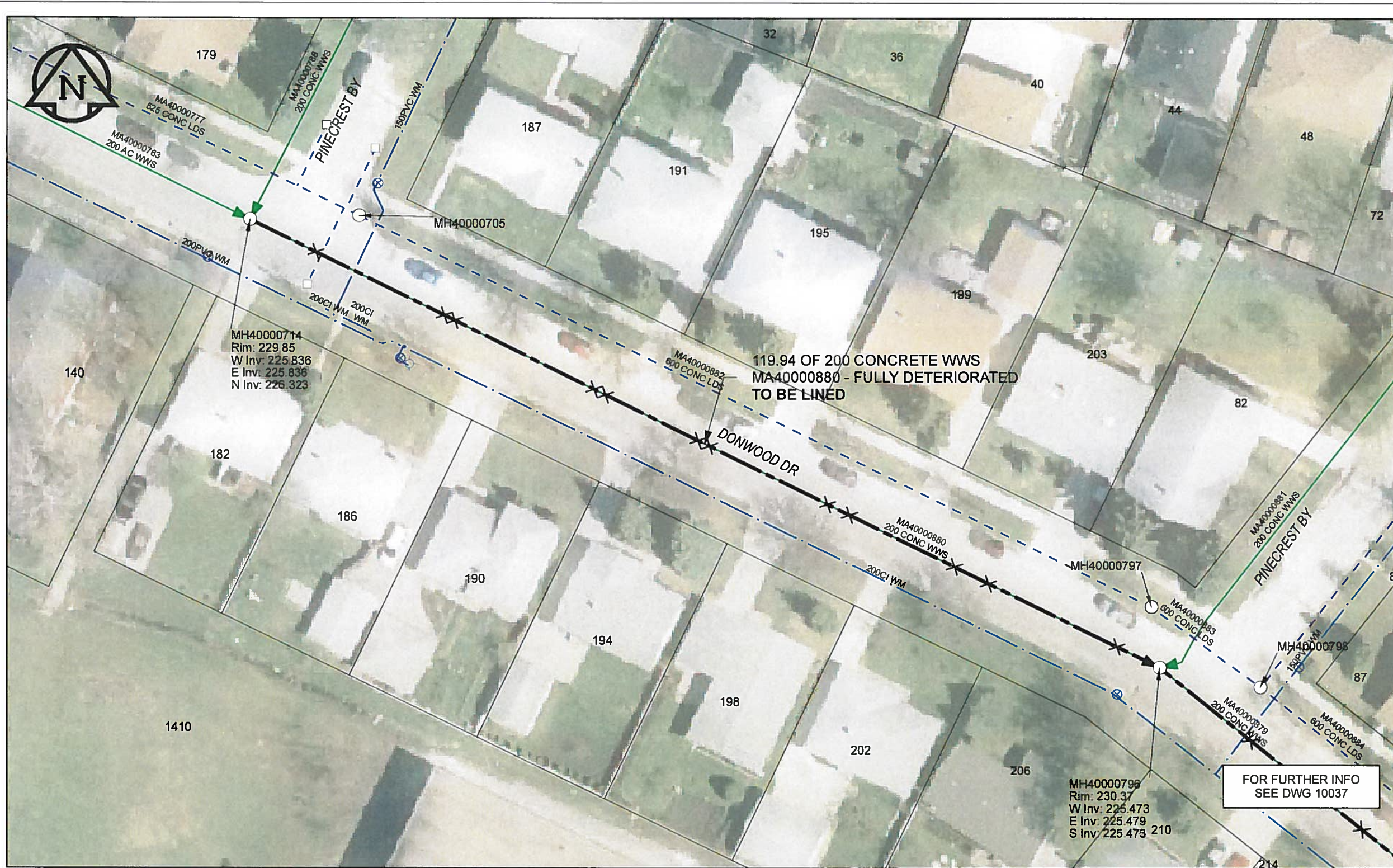


B SIZE 11" X 17" (279mm x 432mm)



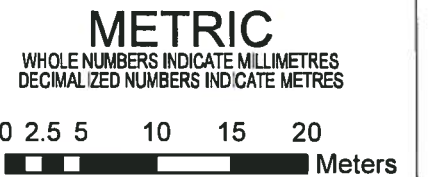
SEWER JUNCTION INFORMATION

REF MH*	DIST FROM* REF MH	SIZE*	CLOCK AT*
MH40000714	8.70	100Ø	12
MH40000714	25.60	100Ø	12
MH40000714	27.00	100Ø	12
MH40000714	45.40	100Ø	12
MH40000714	46.90	100Ø	12
MH40000714	59.10	100Ø	12
MH40000714	60.60	150Ø	12
MH40000714	76.20	150Ø	12
MH40000714	79.10	150Ø	12
MH40000714	92.90	100Ø	12
MH40000714	97.40	150Ø	12
MH40000714	114.30	100Ø	12

*JUNCTION INFORMATION FROM VIDEO INSPECTION

WARNING
 IF POWER EQUIPMENT OR EXPLOSIVES ARE TO BE USED FOR EXCAVATION ON THIS PROJECT, THE CONTRACTOR MUST
 1) NOTIFY THE GAS COMPANY OF THE PROPOSED LOCATION OF EXCAVATION
 2) TAKE PRECAUTION TO AVOID DAMAGE TO GAS COMPANY INSTALLATIONS
 SEE PROVINCIAL REGULATION 140/92 FOR DETAILS

APEGM
 Certificate of Authorization
 AECOM Canada Ltd.
 No. 4671 Date: 12/02/16



BID OPPORTUNITY NO.1048-2011

LOCATION APPROVED UNDERGROUND STRUCTURES

SUPR. U/G STRUCTURES DATE COMMITTEE
 NOTE:
 LOCATION OF UNDERGROUND STRUCTURES AS SHOWN ARE BASED ON THE BEST INFORMATION AVAILABLE. BUT NO GUARANTEE IS GIVEN THAT ALL EXISTING UTILITIES ARE SHOWN OR THAT THE GIVEN LOCATIONS ARE EXACT. CONFIRMATION OF EXISTENCE AND EXACT LOCATION OF ALL SERVICES MUST BE OBTAINED FROM THE INDIVIDUAL UTILITIES BEFORE PROCEEDING WITH CONSTRUCTION.

Can-Net GPS Reference Station WINN/810

NO.	REVISIONS	YY/MM/DD	BY
0	ISSUED FOR CONSTRUCTION	12/02/21	JZ



DESIGNED BY	ALD	CHECKED BY	PL
DRAWN BY	JZ	APPROVED BY	[Signature]
HOR. SCALE	1:500	RELEASED FOR CONSTRUCTION	[Signature]
VERT. SCALE	N/A	DATE	12/02/16

PROFESSIONAL'S SEAL



CONSULTANT DRAWING NO.
 60224031-01-C-041-R0X.mxd



THE CITY OF WINNIPEG WATER AND WASTE DEPARTMENT

2011 WASTE WATER SEWER RENEWALS BY CIPP LINING CONTRACT 20 DONWOOD DR PINECREST BY (W LEG) TO PINECREST BY (E LEG)

SHEET 41 OF 112
 CITY DRAWING NUMBER
10036 REV 0

FILE NAME: 60224031-01-C-041-R0X.PDF Saved By: JZ

AECOM REVIEW DRFT CHK