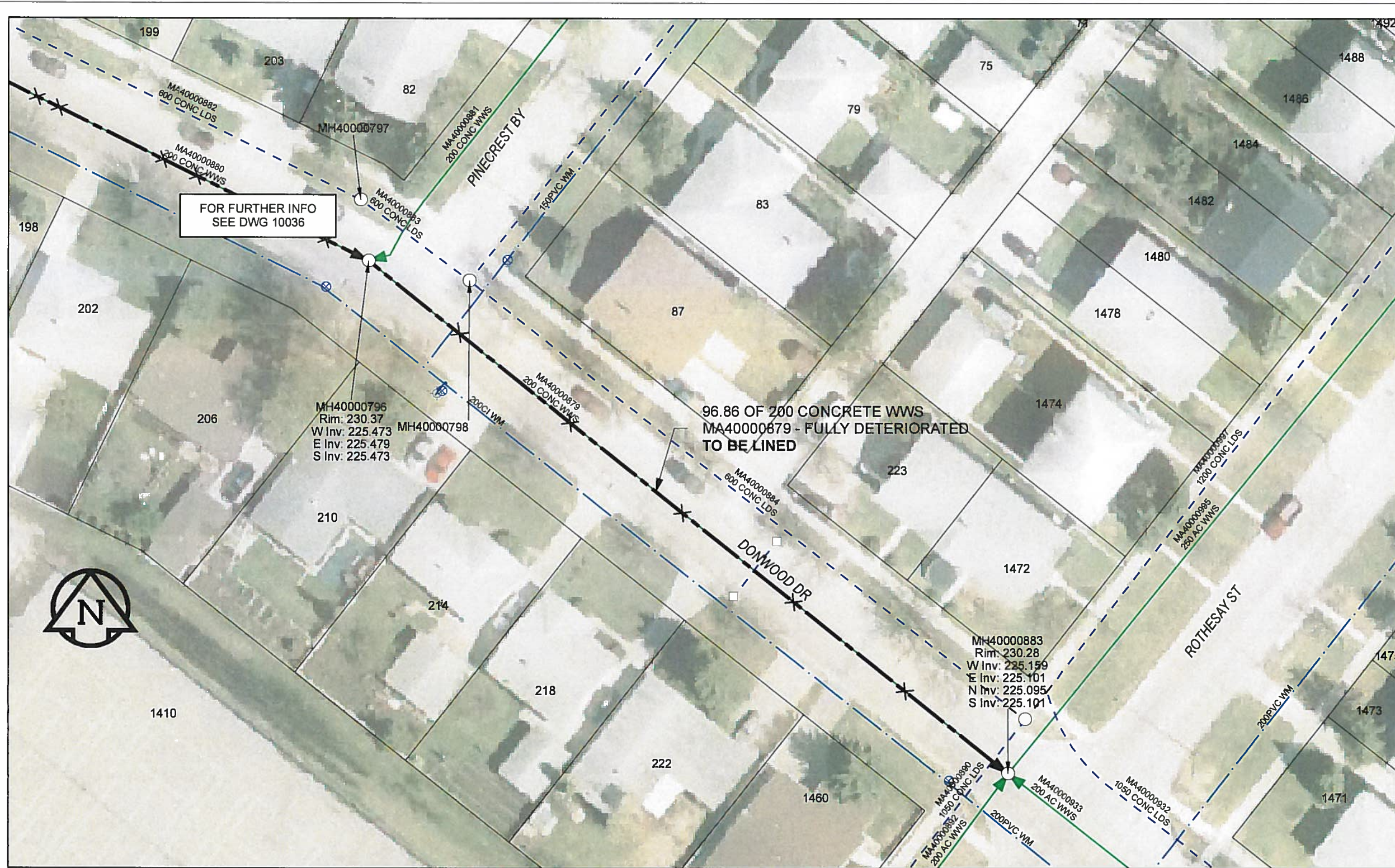


B SIZE 11" X 17" (279mm x 432mm)



**SEWER JUNCTION INFORMATION**

| REF MH*    | DIST FROM* | SIZE* | CLOCK AT* |
|------------|------------|-------|-----------|
| MH40000796 | 13.80      | 1000  | 12        |
| MH40000796 | 30.60      | 1000  | 12        |
| MH40000796 | 47.60      | 1000  | 12        |
| MH40000796 | 64.40      | 1000  | 12        |
| MH40000796 | 81.30      | 1000  | 12        |

\*JUNCTION INFORMATION FROM VIDEO INSPECTION

FOR FURTHER INFO  
SEE DWG 10036

96.86 OF 200 CONCRETE WWS  
MA40000679 - FULLY DETERIORATED  
TO BE LINED

MH40000796  
Rim: 230.37  
W Inv: 225.473  
E Inv: 225.479  
S Inv: 225.473

MH40000883  
Rim: 230.28  
W Inv: 225.159  
E Inv: 225.101  
N Inv: 225.095  
S Inv: 225.101

**WARNING**  
IF POWER EQUIPMENT OR EXPLOSIVES ARE TO BE USED FOR EXCAVATION ON THIS PROJECT, THE CONTRACTOR MUST:  
1) NOTIFY THE GAS COMPANY OF THE PROPOSED LOCATION OF EXCAVATION.  
2) TAKE PRECAUTION TO AVOID DAMAGE TO GAS COMPANY INSTALLATIONS.  
SEE PROVINCIAL REGULATION 140/92 FOR DETAILS

**PEGM**  
Certificate of Authorization  
AECOM Canada Ltd.  
No. 4671 Date: 12/02/16

**METRIC**  
WHOLE NUMBERS INDICATE MILLIMETRES  
DECIMALIZED NUMBERS INDICATE METRES

BID OPPORTUNITY NO.1048-2011

**LOCATION APPROVED UNDERGROUND STRUCTURES**

| SUPR. U/G STRUCTURES COMMITTEE | DATE |
|--------------------------------|------|
|                                |      |

**NOTE:**  
LOCATION OF UNDERGROUND STRUCTURES AS SHOWN ARE BASED ON THE BEST INFORMATION AVAILABLE. BUT NO GUARANTEE IS GIVEN THAT ALL EXISTING UTILITIES ARE SHOWN OR THAT THE GIVEN LOCATIONS ARE EXACT. CONFIRMATION OF EXISTENCE AND EXACT LOCATION OF ALL SERVICES MUST BE OBTAINED FROM THE INDIVIDUAL UTILITIES BEFORE PROCEEDING WITH CONSTRUCTION.

Can-Net GPS Reference Station WINN/810

| NO. | REVISIONS               | YY/MM/DD | BY |
|-----|-------------------------|----------|----|
| 0   | ISSUED FOR CONSTRUCTION | 12/02/21 | JZ |

**AECOM**

|             |       |                           |                      |
|-------------|-------|---------------------------|----------------------|
| DESIGNED BY | ALD   | CHECKED BY                | <i>RL</i>            |
| DRAWN BY    | JZ    | APPROVED BY               | <i>Bryan Leblanc</i> |
| HOR. SCALE  | 1:500 | RELEASED FOR CONSTRUCTION | <i>12/02/16</i>      |
| VERT. SCALE | N/A   | DATE                      | 12/02/16             |

PROFESSIONAL'S SEAL

CONSULTANT DRAWING NO. 60224031-01-C-042-R0X.mxd

**THE CITY OF WINNIPEG WATER AND WASTE DEPARTMENT**

2011 WASTE WATER SEWER RENEWALS  
BY CIPP LINING  
CONTRACT 20  
DONWOOD DR  
PINECREST BY (E LEG) TO ROTHESAY ST

SHEET 42 OF 112  
CITY DRAWING NUMBER 10037 REV 0

AECOM REVIEW DRAFT CHK AP FILE NAME: 60224031-01-C-042-R0X.PDF Saved By: JZ