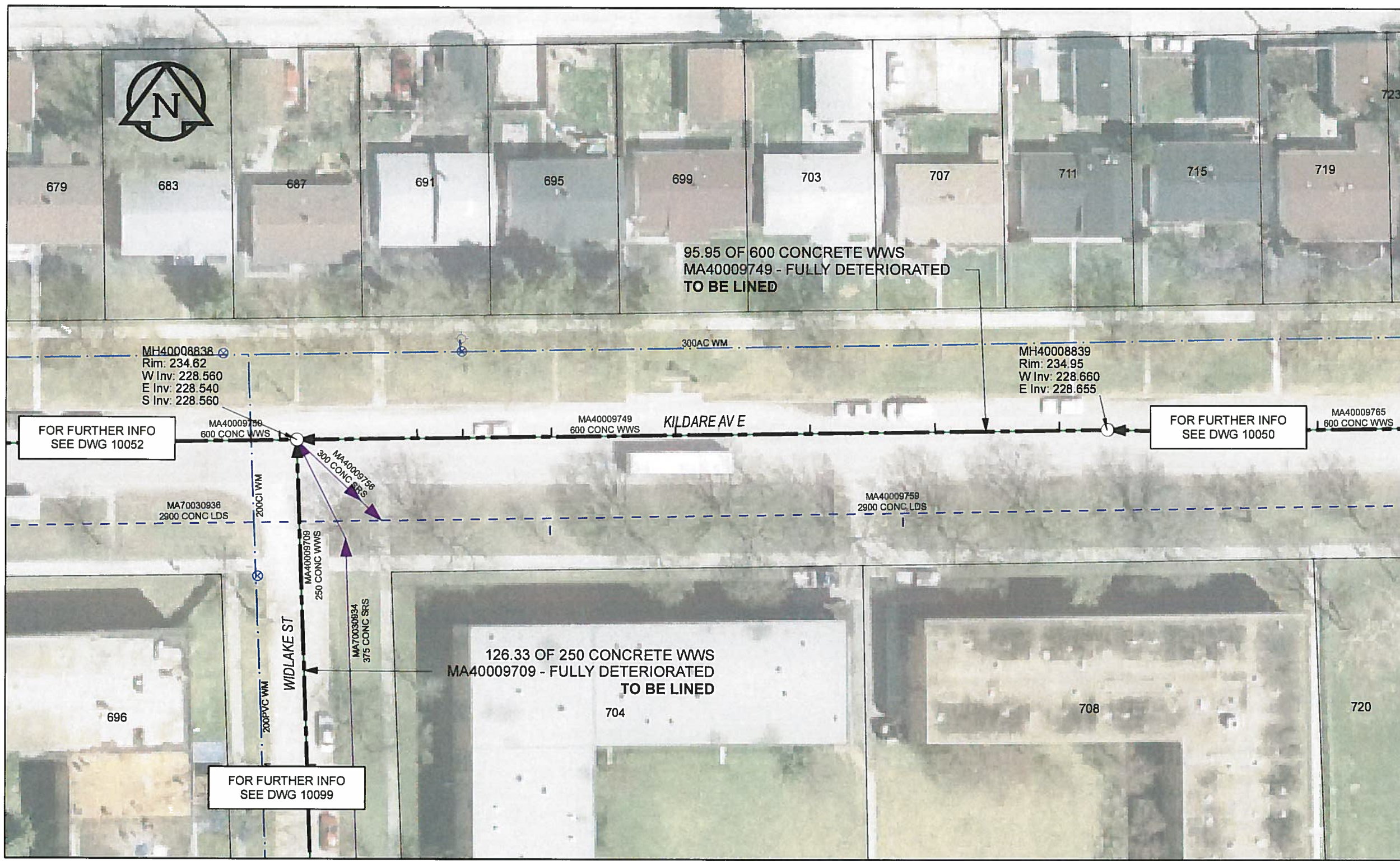


B SIZE 11" X 17" (279mm x 432mm)



**SEWER JUNCTION INFORMATION**

REF MH*	DIST FROM*	SIZE*	CLOCK AT*
MH40008839	5.70	1500	02
MH40008839	20.40	1500	01
MH40008839	35.20	1500	01
MH40008839	51.10	1500	01
MH40008839	65.80	1500	01
MH40008839	76.30	1500	02
MH40008839	81.70	1500	01

\*JUNCTION INFORMATION FROM VIDEO INSPECTION

**WARNING**  
 IF POWER EQUIPMENT OR EXPLOSIVES ARE TO BE USED FOR EXCAVATION ON THIS PROJECT, THE CONTRACTOR MUST:  
 1) NOTIFY THE GAS COMPANY OF THE PROPOSED LOCATION OF EXCAVATION.  
 2) TAKE PRECAUTION TO AVOID DAMAGE TO GAS COMPANY INSTALLATIONS.  
 SEE PROVINCIAL REGULATION 140/92 FOR DETAILS.

**AECOM**  
 Certificate of Authorization  
 AECOM Canada Ltd.  
 No. 4671 Date: 12/2/12

**METRIC**  
 WHOLE NUMBERS INDICATE MILLIMETRES  
 DECIMALIZED NUMBERS INDICATE METRES

0 2.5 5 10 15 20  
 Meters

BID OPPORTUNITY NO.1048-2011

AECOM REVIEW DRIFT CHK

FILE NAME: 60224031-01-C-056-R0X.PDF Saved By: JZ

**LOCATION APPROVED UNDERGROUND STRUCTURES**

SUPR. U/G STRUCTURES COMMITTEE	DATE

**NOTE:**  
 LOCATION OF UNDERGROUND STRUCTURES AS SHOWN ARE BASED ON THE BEST INFORMATION AVAILABLE. BUT NO GUARANTEE IS GIVEN THAT ALL EXISTING UTILITIES ARE SHOWN OR THAT THE GIVEN LOCATIONS ARE EXACT. CONFIRMATION OF EXISTENCE AND EXACT LOCATION OF ALL SERVICES MUST BE OBTAINED FROM THE INDIVIDUAL UTILITIES BEFORE PROCEEDING WITH CONSTRUCTION.

Can-Net GPS Reference Station WINN/810

NO.	ISSUED FOR CONSTRUCTION	YY/MM/DD	BY
0	ISSUED FOR CONSTRUCTION	12/02/12	JZ

**AECOM**

DESIGNED BY	ALD	CHECKED BY	PL
DRAWN BY	JZ	APPROVED BY	<i>[Signature]</i>
HOR. SCALE	1:500	RELEASED FOR CONSTRUCTION	<i>[Signature]</i>
VERT. SCALE	N/A	DATE	12/02/12

PROFESSIONAL'S SEAL

CONSULTANT DRAWING NO.  
60224031-01-C-056-R0X.mxd

**THE CITY OF WINNIPEG WATER AND WASTE DEPARTMENT**

2011 WASTE WATER SEWER RENEWALS  
 BY CIPP LINING  
 CONTRACT 20  
 KILDARE AVE  
 96.3m E OF WIDLAKE ST TO WIDLAKE ST

SHEET 56 OF 112  
 CITY DRAWING NUMBER  
**10051** REV 0