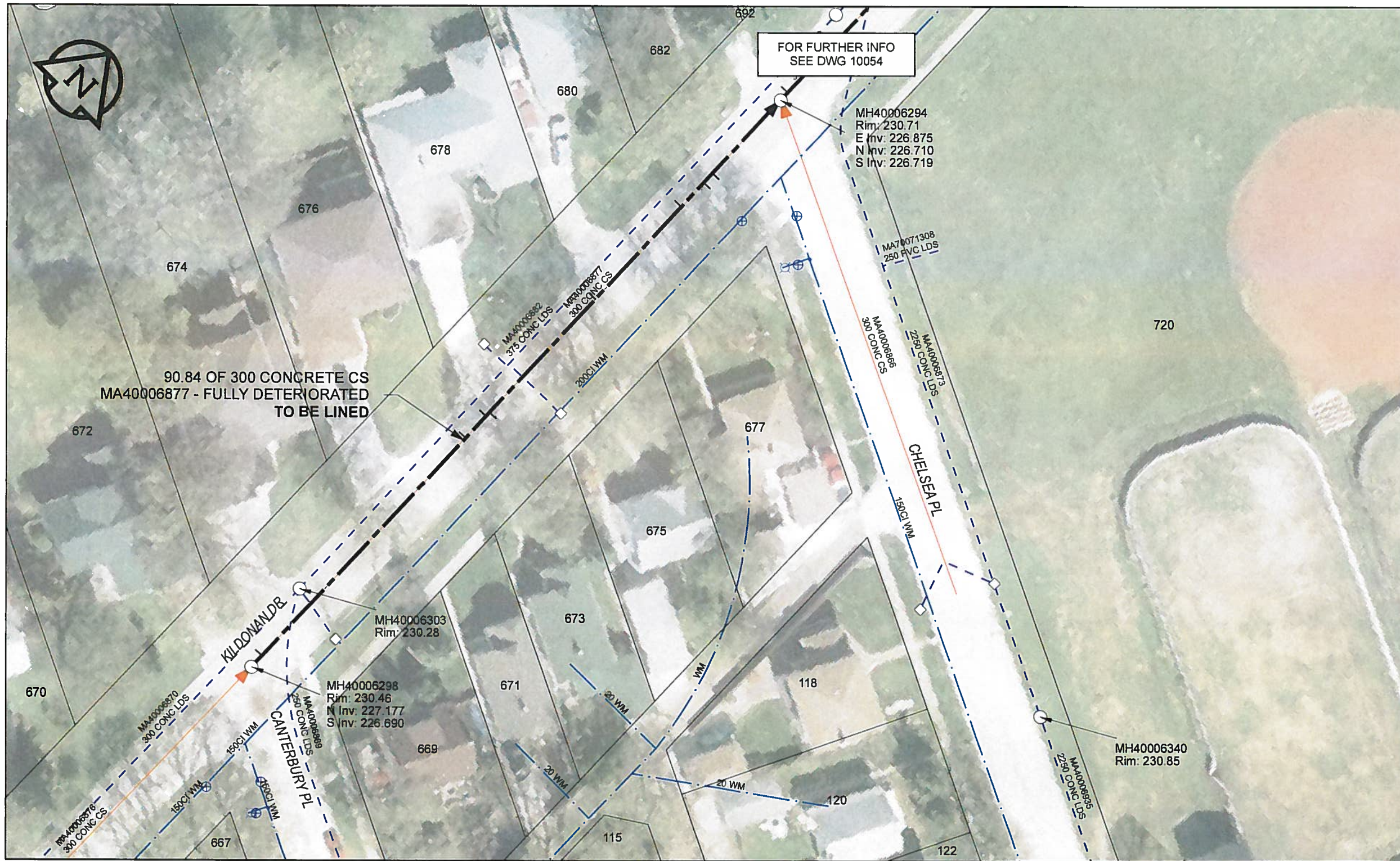


B SIZE 11" X 17" (279mm x 432mm)

FILE NAME: 60224031-01-C-058-ROX.PDF Saved By: JZ



SEWER JUNCTION INFORMATION

REF MH*	DIST FROM* REF MH	SIZE*	CLOCK AT*
MH40006298	1.80	150Ø	10
MH40006298	36.70	150Ø	10
MH40006298	40.20	150Ø	11
MH40006298	40.80	150Ø	02
MH40006298	59.00	150Ø	10
MH40006298	73.70	150Ø	10
MH40006298	77.60	150Ø	02
MH40006298	79.10	150Ø	02

*JUNCTION INFORMATION FROM VIDEO INSPECTION

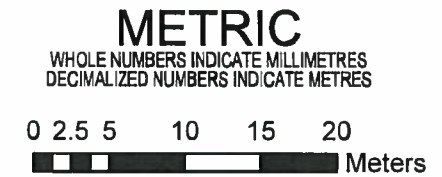
WARNING

IF POWER EQUIPMENT OR EXPLOSIVES ARE TO BE USED FOR EXCAVATION ON THIS PROJECT, THE CONTRACTOR MUST:

- 1) NOTIFY THE GAS COMPANY OF THE PROPOSED LOCATION OF EXCAVATION
- 2) TAKE PRECAUTION TO AVOID DAMAGE TO GAS COMPANY INSTALLATIONS.

SEE PROVINCIAL REGULATION 140/92 FOR DETAILS

AECOM
Certificate of Authorization
AECOM Canada Ltd.
No. 4671 Date: 12/02/12



BID OPPORTUNITY NO.1048-2011

AECOM REVIEW DRIFT CHK AD

LOCATION APPROVED UNDERGROUND STRUCTURES

SUPR. U/G STRUCTURES COMMITTEE	DATE

NOTE:
LOCATION OF UNDERGROUND STRUCTURES AS SHOWN ARE BASED ON THE BEST INFORMATION AVAILABLE. BUT NO GUARANTEE IS GIVEN THAT ALL EXISTING UTILITIES ARE SHOWN OR THAT THE GIVEN LOCATIONS ARE EXACT. CONFIRMATION OF EXISTENCE AND EXACT LOCATION OF ALL SERVICES MUST BE OBTAINED FROM THE INDIVIDUAL UTILITIES BEFORE PROCEEDING WITH CONSTRUCTION.

Can-Net GPS Reference Station WINN/810

NO.	REVISIONS	YY/MM/DD	BY
0	ISSUED FOR CONSTRUCTION	12/02/12	JZ



DESIGNED BY	ALD	CHECKED BY	PL
DRAWN BY	JZ	APPROVED BY	Bryan Leleber
HOR. SCALE	1:500	RELEASED FOR CONSTRUCTION	12/02/12
VERT. SCALE	N/A	DATE	12/02/12

PROFESSIONAL'S SEAL

CONSULTANT DRAWING NO. 60224031-01-C-058-ROX.mxd

THE CITY OF WINNIPEG WATER AND WASTE DEPARTMENT

2011 WASTE WATER SEWER RENEWALS BY CIPP LINING CONTRACT 20

KILDONAN DR
CANTERBURY PL TO CHELSEA PL

SHEET 58 OF 112
CITY DRAWING NUMBER 10053 REV 0