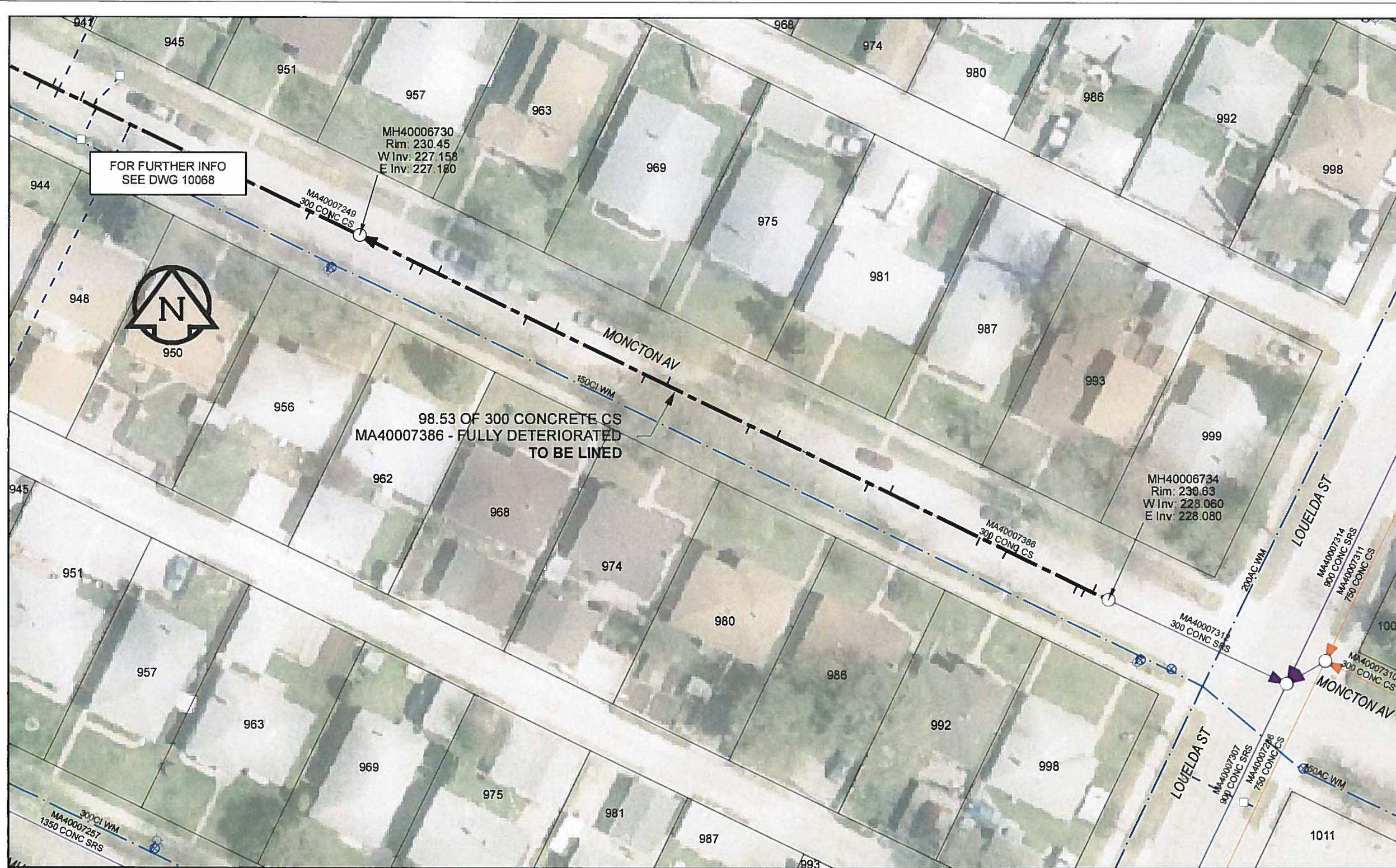


B SIZE 11" X 17" (279mm x 432mm)

FILE NAME: 60224031-01-C-072-R0X.PDF Saved By: JZ



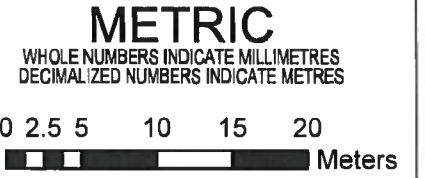
**SEWER JUNCTION INFORMATION**

REF MH*	DIST FROM* REF MH	SIZE*	CLOCK AT*
MH40006734	2.10	150Ø	03
MH40006734	3.10	150Ø	10
MH40006734	4.10	150Ø	10
MH40006734	12.30	150Ø	03
MH40006734	13.40	150Ø	10
MH40006734	16.00	150Ø	02
MH40006734	16.90	150Ø	10
MH40006734	28.80	150Ø	02
MH40006734	31.60	150Ø	10
MH40006734	43.70	150Ø	02
MH40006734	47.20	150Ø	10
MH40006734	58.10	150Ø	02
MH40006734	60.90	150Ø	10
MH40006734	72.80	150Ø	02
MH40006734	76.50	150Ø	10
MH40006734	88.20	150Ø	02
MH40006734	90.10	150Ø	10
MH40006734	91.40	150Ø	11

\*JUNCTION INFORMATION FROM VIDEO INSPECTION

**WARNING**  
 IF POWER EQUIPMENT OR EXPLOSIVES ARE TO BE USED FOR EXCAVATION ON THIS PROJECT, THE CONTRACTOR MUST:  
 1) NOTIFY THE GAS COMPANY OF THE PROPOSED LOCATION OF EXCAVATION  
 2) TAKE PRECAUTION TO AVOID DAMAGE TO GAS COMPANY INSTALLATIONS  
 SEE PROVINCIAL REGULATION 140/92 FOR DETAILS

**APEGM**  
 Certificate of Authorization  
 AECOM Canada Ltd.  
 No. 4671 Date: 12/02/16



BID OPPORTUNITY NO.1048-2011

AECOM REVIEW DRFT CHK

**LOCATION APPROVED UNDERGROUND STRUCTURES**

SUPR. U/G STRUCTURES	DATE

NOTE:  
 LOCATION OF UNDERGROUND STRUCTURES AS SHOWN ARE BASED ON THE BEST INFORMATION AVAILABLE. BUT NO GUARANTEE IS GIVEN THAT ALL EXISTING UTILITIES ARE SHOWN OR THAT THE GIVEN LOCATIONS ARE EXACT. CONFIRMATION OF EXISTENCE AND EXACT LOCATION OF ALL SERVICES MUST BE OBTAINED FROM THE INDIVIDUAL UTILITIES BEFORE PROCEEDING WITH CONSTRUCTION.

Can-Net GPS Reference Station WINN/810

NO.	ISSUED FOR CONSTRUCTION	YY/MM/DD	BY
0	ISSUED FOR CONSTRUCTION	12/02/21	JZ

**AECOM**

DESIGNED BY	ALD	CHECKED BY	PL
DRAWN BY	JZ	APPROVED BY	<i>Byron Leblond</i>
HOR. SCALE	1:500	RELEASED FOR CONSTRUCTION	<i>[Signature]</i>
VERT. SCALE	N/A	DATE	12/02/16

PROFESSIONAL'S SEAL  
 PROVINCE OF MANITOBA  
  
 CONSULTANT DRAWING NO. 60224031-01-C-072-R0X.mxd

**THE CITY OF WINNIPEG WATER AND WASTE DEPARTMENT**

2011 WASTE WATER SEWER RENEWALS  
 BY CIPP LINING  
 CONTRACT 20  
 MONCTON AV  
 LOUELDA ST TO 98.8m W OF LOUELDA ST

SHEET 72 OF 112  
 CITY DRAWING NUMBER 10067 REV 0