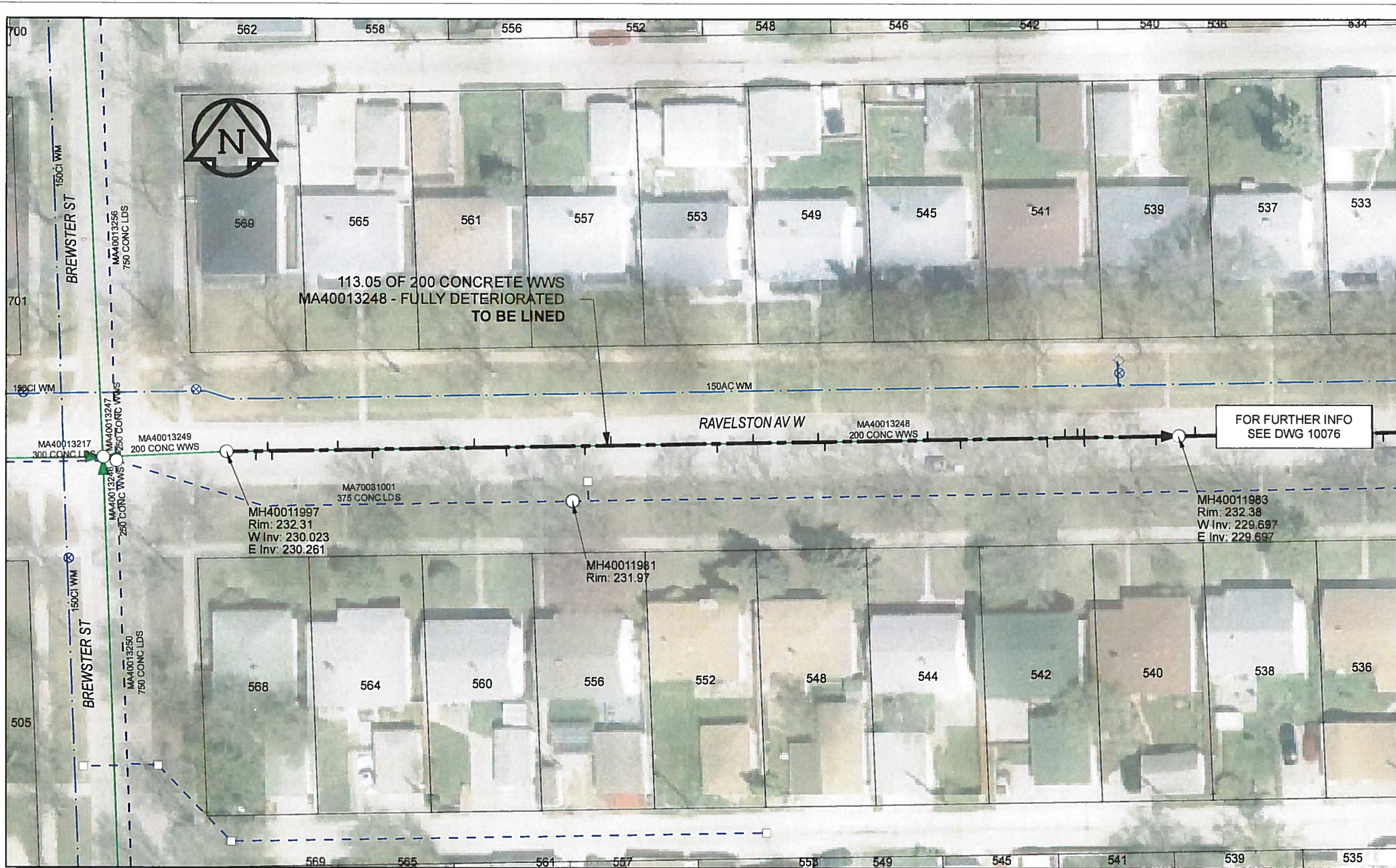


B SIZE 11" X 17" (279mm x 432mm)

FILE NAME: 60224031-01-C-080-R0X.PDF

DRFT CHK
AECOM REVIEW



SEWER JUNCTION INFORMATION

REF MH*	DIST FROM* REF MH	SIZE*	CLOCK AT*
MH40011997	3.50	100Ø	02
MH40011997	4.90	150Ø	09
MH40011997	5.40	150Ø	03
MH40011997	13.20	150Ø	10
MH40011997	17.30	150Ø	03
MH40011997	29.40	150Ø	09
MH40011997	33.20	150Ø	03
MH40011997	42.50	150Ø	03
MH40011997	45.60	150Ø	09
MH40011997	58.20	150Ø	02
MH40011997	62.50	150Ø	10
MH40011997	70.20	150Ø	10
MH40011997	71.00	150Ø	02
MH40011997	83.20	150Ø	10
MH40011997	87.10	150Ø	03
MH40011997	97.40	150Ø	02
MH40011997	99.50	150Ø	10
MH40011997	101.00	150Ø	09
MH40011997	101.80	150Ø	02
MH40011997	101.80	100Ø	10
MH40011997	110.30	150Ø	02

*JUNCTION INFORMATION FROM VIDEO INSPECTION

FOR FURTHER INFO SEE DWG 10076

WARNING
IF POWER EQUIPMENT OR EXPLOSIVES ARE TO BE USED FOR EXCAVATION ON THIS PROJECT, THE CONTRACTOR MUST:
1) NOTIFY THE GAS COMPANY OF THE PROPOSED LOCATION OF EXCAVATION.
2) TAKE PRECAUTION TO AVOID DAMAGE TO GAS COMPANY INSTALLATIONS.
SEE PROVINCIAL REGULATION 140/92 FOR DETAILS

AECOM
Certificate of Authorization
AECOM Canada Ltd.
No. 4671 Date: 12/02/16

METRIC
WHOLE NUMBERS INDICATE MILLIMETRES
DECIMALIZED NUMBERS INDICATE METRES

0 2.5 5 10 15 20
Meters

BID OPPORTUNITY NO.1048-2011

LOCATION APPROVED UNDERGROUND STRUCTURES

SUPR. U/G STRUCTURES COMMITTEE DATE

NOTE:
LOCATION OF UNDERGROUND STRUCTURES AS SHOWN ARE BASED ON THE BEST INFORMATION AVAILABLE. BUT NO GUARANTEE IS GIVEN THAT ALL EXISTING UTILITIES ARE SHOWN OR THAT THE GIVEN LOCATIONS ARE EXACT. CONFIRMATION OF EXISTENCE AND EXACT LOCATION OF ALL SERVICES MUST BE OBTAINED FROM THE INDIVIDUAL UTILITIES BEFORE PROCEEDING WITH CONSTRUCTION.

Can-Net GPS Reference Station WINN/810

NO.	ISSUED FOR CONSTRUCTION	YY/MM/DD	BY
0	ISSUED FOR CONSTRUCTION	12/02/21	JZ
	REVISIONS	YY/MM/DD	BY

AECOM

DESIGNED BY	ALD	CHECKED BY	PL
DRAWN BY	JZ	APPROVED BY	[Signature]
HOR. SCALE	1:500	RELEASED FOR CONSTRUCTION	[Signature]
VERT. SCALE	N/A	DATE	12/02/16

PROFESSIONAL'S SEAL

PROVINCE OF MANITOBA
K. FITCHETT
REGISTERED ENGINEER
Feb 16/12

CONSULTANT DRAWING NO. 60224031-01-C-080-R0X.mxd

THE CITY OF WINNIPEG WATER AND WASTE DEPARTMENT

2011 WASTE WATER SEWER RENEWALS BY CIPP LINING CONTRACT 20 RAVELSTON AV W RAVELSTON AV W TO 112.5m E OF RAVELSTON AV W

SHEET 80 OF 112
CITY DRAWING NUMBER 10075 REV 0