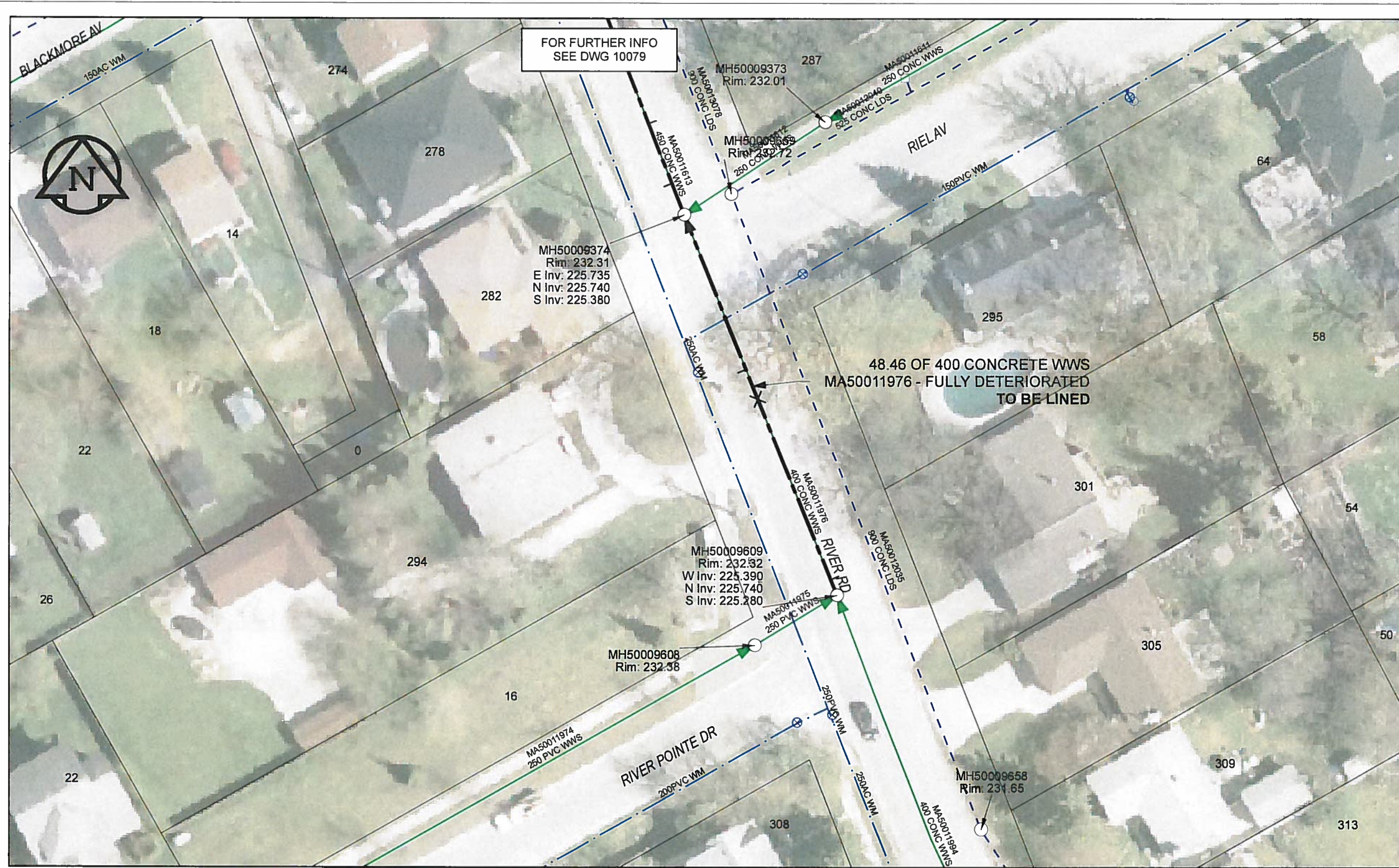


B SIZE 11" X 17" (279mm x 432mm)

FILE NAME: 60224031-01-C-083-R0X.PDF Saved By: JZ



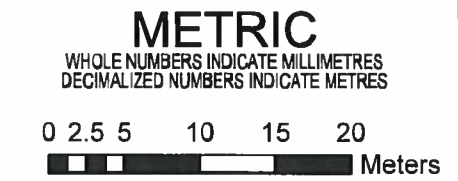
SEWER JUNCTION INFORMATION

REF MH*	DIST FROM* REF MH	SIZE*	CLOCK AT*
MH50009609	2.00	150Ø	01
MH50009609	25.00	150Ø	12
MH50009609	28.80	150Ø	11

*JUNCTION INFORMATION FROM VIDEO INSPECTION

WARNING
 IF POWER EQUIPMENT OR EXPLOSIVES ARE TO BE USED FOR EXCAVATION ON THIS PROJECT, THE CONTRACTOR MUST:
 1) NOTIFY THE GAS COMPANY OF THE PROPOSED LOCATION OF EXCAVATION.
 2) TAKE PRECAUTION TO AVOID DAMAGE TO GAS COMPANY INSTALLATIONS.
 SEE PROVINCIAL REGULATION 140/92 FOR DETAILS

AECOM
 Certificate of Authorization
 AECOM Canada Ltd.
 No. 4671 Date: 12/03/12



BID OPPORTUNITY NO.1048-2011

AECOM REVIEW DRFT CHK AD

LOCATION APPROVED UNDERGROUND STRUCTURES

SUPR. U/G STRUCTURES COMMITTEE DATE

NOTE:
 LOCATION OF UNDERGROUND STRUCTURES AS SHOWN ARE BASED ON THE BEST INFORMATION AVAILABLE. BUT NO GUARANTEE IS GIVEN THAT ALL EXISTING UTILITIES ARE SHOWN OR THAT THE GIVEN LOCATIONS ARE EXACT. CONFIRMATION OF EXISTENCE AND EXACT LOCATION OF ALL SERVICES MUST BE OBTAINED FROM THE INDIVIDUAL UTILITIES BEFORE PROCEEDING WITH CONSTRUCTION.

Can-Net GPS Reference Station WINN/810

NO.	ISSUED FOR CONSTRUCTION	DATE	BY
0	ISSUED FOR CONSTRUCTION	12/02/12	JZ
	REVISIONS	YY/MM/DD	BY

AECOM

DESIGNED BY ALD CHECKED BY PL

DRAWN BY JZ APPROVED BY *[Signature]*

HOR. SCALE 1:500 VERT. SCALE N/A

DATE 12/02/12

PROFESSIONAL'S SEAL

PROVINCE OF MANITOBA
 K. FITCHETT
 REGISTERED ENGINEER

CONSULTANT DRAWING NO. 60224031-01-C-083-R0X.mxd

THE CITY OF WINNIPEG WATER AND WASTE DEPARTMENT

2011 WASTE WATER SEWER RENEWALS
 BY CIPP LINING
 CONTRACT 20
 RIVER RD
 RIVER POINTE DR TO RIEL AV

SHEET 83 OF 112
 CITY DRAWING NUMBER 10078 REV 0