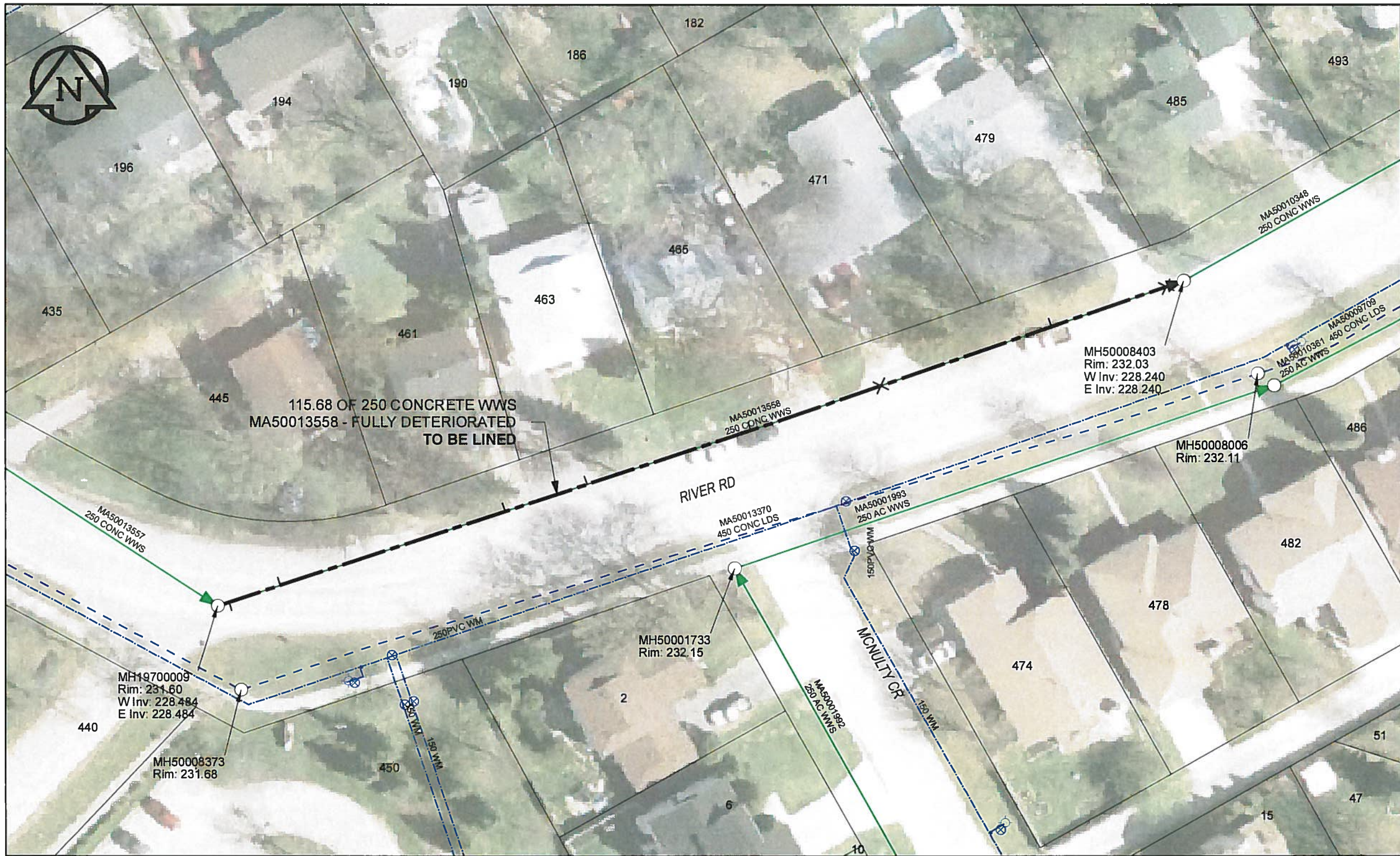


B SIZE 11" X 17" (279mm x 432mm)

AECOM REVIEW DRAFT CHK
 FILE NAME: 60224031-01-C-087-R0X.PDF Saved By: JZ



SEWER JUNCTION INFORMATION

REF MH	FROM REF MH	SIZE*	CLOCK AT*
MH19700009	MH	150Ø	03
MH19700009	14.90	150Ø	10
MH19700009	25.10	150Ø	11
MH19700009	45.50	150Ø	10
MH19700009	61.80	150Ø	12
MH19700009	83.20	150Ø	11
MH19700009	97.60	150Ø	12

*JUNCTION INFORMATION FROM VIDEO INSPECTION

WARNING
 IF POWER EQUIPMENT OR EXPLOSIVES ARE TO BE USED FOR EXCAVATION ON THIS PROJECT, THE CONTRACTOR MUST:
 1) NOTIFY THE GAS COMPANY OF THE PROPOSED LOCATION OF EXCAVATION.
 2) TAKE PRECAUTION TO AVOID DAMAGE TO GAS COMPANY INSTALLATIONS.
 SEE PROVINCIAL REGULATION 140/92 FOR DETAILS

APEGM
 Certificate of Authorization
 AECOM Canada Ltd.
 No. 4671 Date: 12/02/16

METRIC
 WHOLE NUMBERS INDICATE MILLIMETRES
 DECIMALIZED NUMBERS INDICATE METRES

0 2.5 5 10 15 20
 Meters

BID OPPORTUNITY NO.1048-2011

LOCATION APPROVED UNDERGROUND STRUCTURES

SUPR. U/G STRUCTURES	DATE

NOTE:
 LOCATION OF UNDERGROUND STRUCTURES AS SHOWN ARE BASED ON THE BEST INFORMATION AVAILABLE. BUT NO GUARANTEE IS GIVEN THAT ALL EXISTING UTILITIES ARE SHOWN OR THAT THE GIVEN LOCATIONS ARE EXACT. CONFIRMATION OF EXISTENCE AND EXACT LOCATION OF ALL SERVICES MUST BE OBTAINED FROM THE INDIVIDUAL UTILITIES BEFORE PROCEEDING WITH CONSTRUCTION.

Can-Net GPS Reference Station WINN/810

NO.	ISSUED FOR CONSTRUCTION	YY/MM/DD	BY
0	ISSUED FOR CONSTRUCTION	12/02/21	JZ

AECOM

DESIGNED BY	ALD	CHECKED BY	<i>RL</i>
DRAWN BY	JZ	APPROVED BY	<i>Angela...</i>
HOR. SCALE	1:500	RELEASED FOR CONSTRUCTION	<i>12/17/12</i>
VERT. SCALE	N/A	DATE	12/02/16

PROFESSIONAL'S SEAL
 PROVINCE OF MANITOBA
 K. FITCHETT
 REGISTERED ENGINEER
 CONSULTANT DRAWING NO. 60224031-01-C-087-R0X.mxd

THE CITY OF WINNIPEG WATER AND WASTE DEPARTMENT

2011 WASTE WATER SEWER RENEWALS
 BY CIPP LINING
 CONTRACT 20
 RIVER RD (S LEG)
 57.8m W OF MCNUITY CR TO 57.8m E OF MCNUITY CR

SHEET 87 OF 112
 CITY DRAWING NUMBER 10082 REV 0