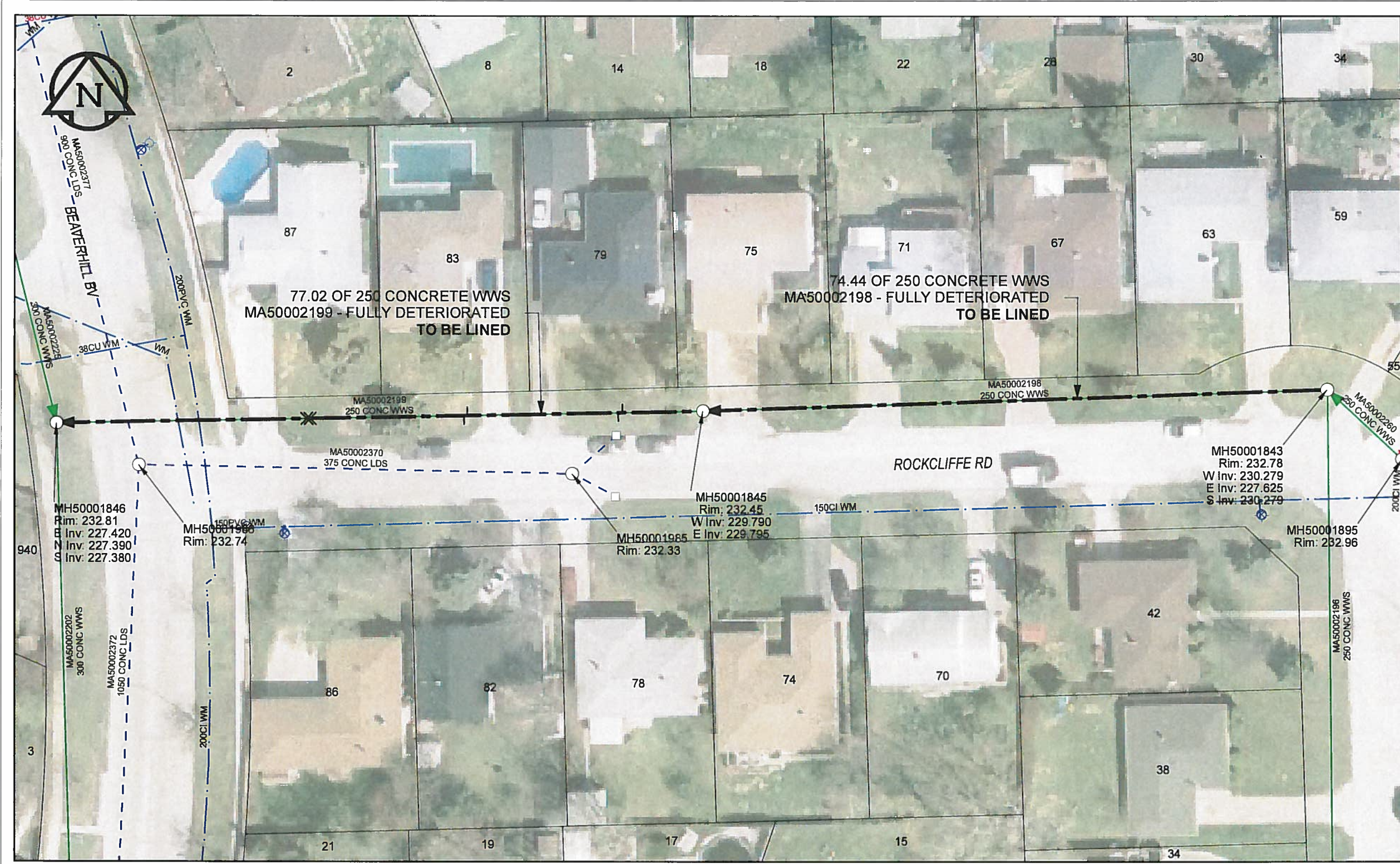


B SIZE 11" X 17" (279mm x 432mm)



SEWER JUNCTION INFORMATION

REF MH*	DIST FROM* REF MH	SIZE*	CLOCK AT*
MH50001845	9.60	150Ø	01
MH50001845	10.10	150Ø	11
MH50001845	28.10	150Ø	01
MH50001845	28.50	150Ø	11
MH50001845	46.80	150Ø	12
MH50001845	47.20	150Ø	12

*JUNCTION INFORMATION FROM VIDEO INSPECTION

WARNING
 IF POWER EQUIPMENT OR EXPLOSIVES ARE TO BE USED FOR EXCAVATION ON THIS PROJECT, THE CONTRACTOR MUST:
 1) NOTIFY THE GAS COMPANY OF THE PROPOSED LOCATION OF EXCAVATION.
 2) TAKE PRECAUTION TO AVOID DAMAGE TO GAS COMPANY INSTALLATIONS.
 SEE PROVINCIAL REGULATION 140/92 FOR DETAILS

APEGM
 Certificate of Authorization
 AECOM Canada Ltd.
 No. 4671 Date: 12/02/16

METRIC
 WHOLE NUMBERS INDICATE MILLIMETRES
 DECIMALIZED NUMBERS INDICATE METRES

0 2.5 5 10 15 20
 Meters

BID OPPORTUNITY NO.1048-2011

AECOM REVIEW DRAFT CHK

FILE NAME: 60224031-01-C-088-R0X.PDF Saved By: JZ

LOCATION APPROVED UNDERGROUND STRUCTURES

SUPR. U/G STRUCTURES COMMITTEE DATE

NOTE:
 LOCATION OF UNDERGROUND STRUCTURES AS SHOWN ARE BASED ON THE BEST INFORMATION AVAILABLE. BUT NO GUARANTEE IS GIVEN THAT ALL EXISTING UTILITIES ARE SHOWN OR THAT THE GIVEN LOCATIONS ARE EXACT. CONFIRMATION OF EXISTENCE AND EXACT LOCATION OF ALL SERVICES MUST BE OBTAINED FROM THE INDIVIDUAL UTILITIES BEFORE PROCEEDING WITH CONSTRUCTION.

Can-Net GPS Reference Station WINN/810

NO.	REVISIONS	YY/MM/DD	BY
0	ISSUED FOR CONSTRUCTION	12/02/21	JZ

AECOM

DESIGNED BY	ALD	CHECKED BY	PL
DRAWN BY	JZ	APPROVED BY	<i>[Signature]</i>
HOR. SCALE	1:500	RELEASED FOR CONSTRUCTION	<i>[Signature]</i>
VERT. SCALE	N/A	DATE	12/02/16

PROFESSIONAL'S SEAL

PROVINCE OF MANITOBA
 K. FITCHETT
 REGISTERED ENGINEER

CONSULTANT DRAWING NO.
 60224031-01-C-088-R0X.mxd

THE CITY OF WINNIPEG
 WATER AND WASTE DEPARTMENT

2011 WASTE WATER SEWER RENEWALS
 BY CIPP LINING
 CONTRACT 20
 ROCKCLIFFE RD (N LEG)
 ROCKCLIFFE RD (E LEG) TO 76.2m W OF ROCKCLIFFE RD (E LEG)
 72.6m E OF BEAVERHILL BV TO BEAVERHILL BV

SHEET 88 OF 112
 CITY DRAWING NUMBER
10083 REV 0