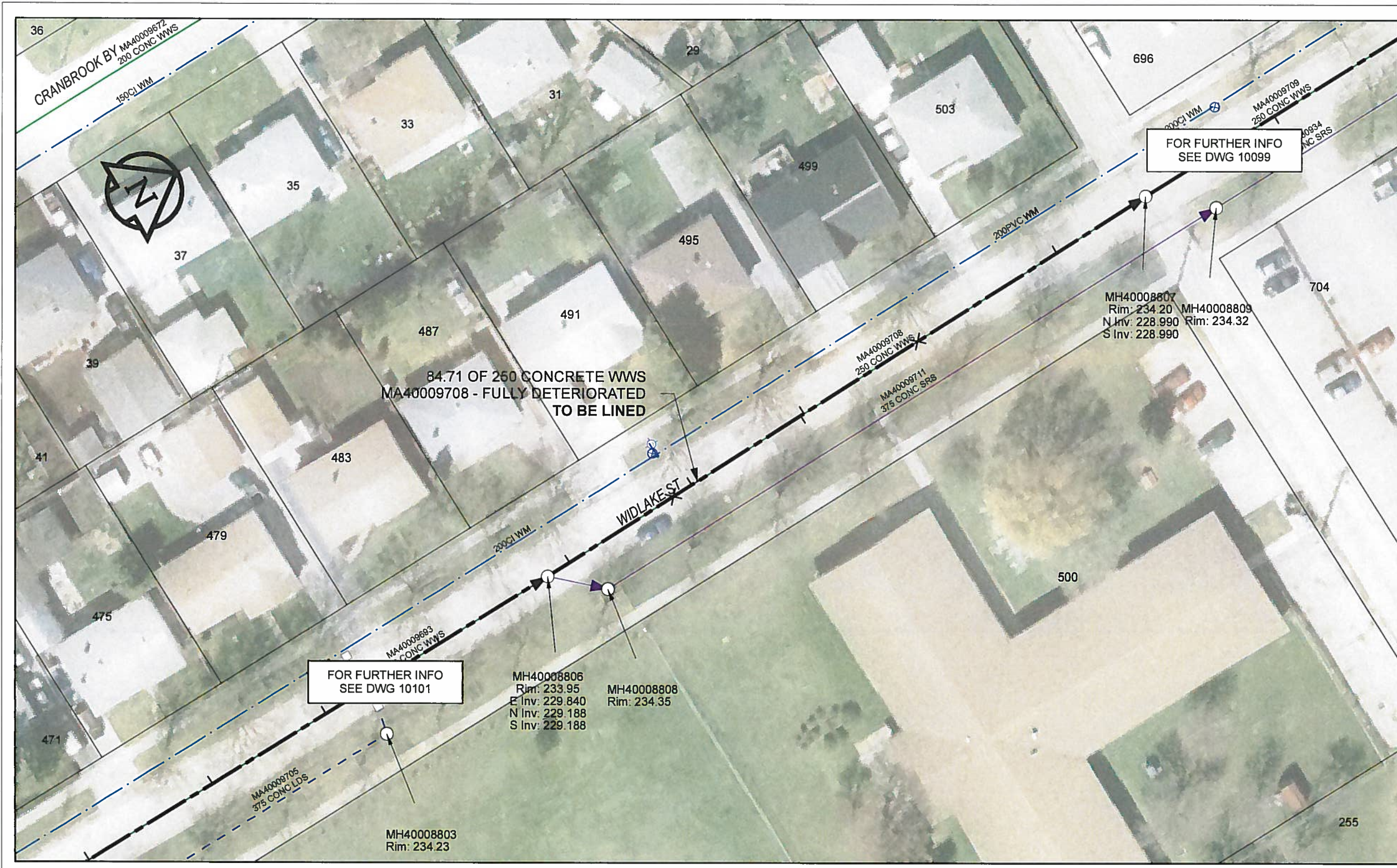


B SIZE 11" X 17" (279mm x 432mm)

AECOM REVIEW DRAFT CHK AD  
 FILE NAME: 60224031-01-C-105-R0X.PDF Saved By: JZ



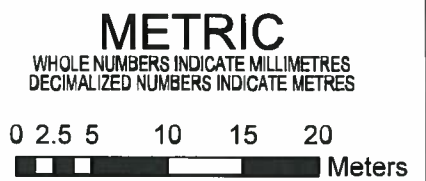
**SEWER JUNCTION INFORMATION**

REF MH*	DIST FROM* REF MH	SIZE*	CLOCK AT*
MH40008806	3.10	150Ø	11
MH40008806	17.80	150Ø	12
MH40008806	20.40	100Ø	10
MH40008806	35.80	150Ø	02
MH40008806	36.30	150Ø	11
MH40008806	52.40	150Ø	12
MH40008806	72.10	150Ø	11

\*JUNCTION INFORMATION FROM VIDEO INSPECTION

**WARNING**  
 IF POWER EQUIPMENT OR EXPLOSIVES ARE TO BE USED FOR EXCAVATION ON THIS PROJECT, THE CONTRACTOR MUST:  
 1) NOTIFY THE GAS COMPANY OF THE PROPOSED LOCATION OF EXCAVATION.  
 2) TAKE PRECAUTION TO AVOID DAMAGE TO GAS COMPANY INSTALLATIONS.  
 SEE PROVINCIAL REGULATION 140/92 FOR DETAILS

**AECOM**  
 Certificate of Authorization  
 AECOM Canada Ltd.  
 No. 4671 Date: 12/02/11



BID OPPORTUNITY NO.1048-2011

**LOCATION APPROVED UNDERGROUND STRUCTURES**

SUPR. U/G STRUCTURES DATE COMMITTEE

**NOTE:**  
 LOCATION OF UNDERGROUND STRUCTURES AS SHOWN ARE BASED ON THE BEST INFORMATION AVAILABLE. BUT NO GUARANTEE IS GIVEN THAT ALL EXISTING UTILITIES ARE SHOWN OR THAT THE GIVEN LOCATIONS ARE EXACT. CONFIRMATION OF EXISTENCE AND EXACT LOCATION OF ALL SERVICES MUST BE OBTAINED FROM THE INDIVIDUAL UTILITIES BEFORE PROCEEDING WITH CONSTRUCTION.

Can-Net GPS Reference Station WINN/810

NO.	ISSUED FOR CONSTRUCTION	DATE	BY
0	ISSUED FOR CONSTRUCTION	12/02/11	JZ
NO.	REVISIONS	YYMMDD	BY

**AECOM**

DESIGNED BY	ALD	CHECKED BY	PL
DRAWN BY	JZ	APPROVED BY	<i>[Signature]</i>
HOR. SCALE	1:500	RELEASED FOR CONSTRUCTION	
VERT. SCALE	N/A	DATE	12/02/11

PROFESSIONAL'S SEAL

CONSULTANT DRAWING NO. 60224031-01-C-105-R0X.mxd

**THE CITY OF WINNIPEG WATER AND WASTE DEPARTMENT**

2011 WASTE WATER SEWER RENEWALS  
 BY CIPP LINING  
 CONTRACT 20  
 WIDLAKE ST  
 211.1m S OF KILDARE AV E to 126.3m S OF KILDARE AV E

SHEET 105 OF 112  
 CITY DRAWING NUMBER 10100 REV 0