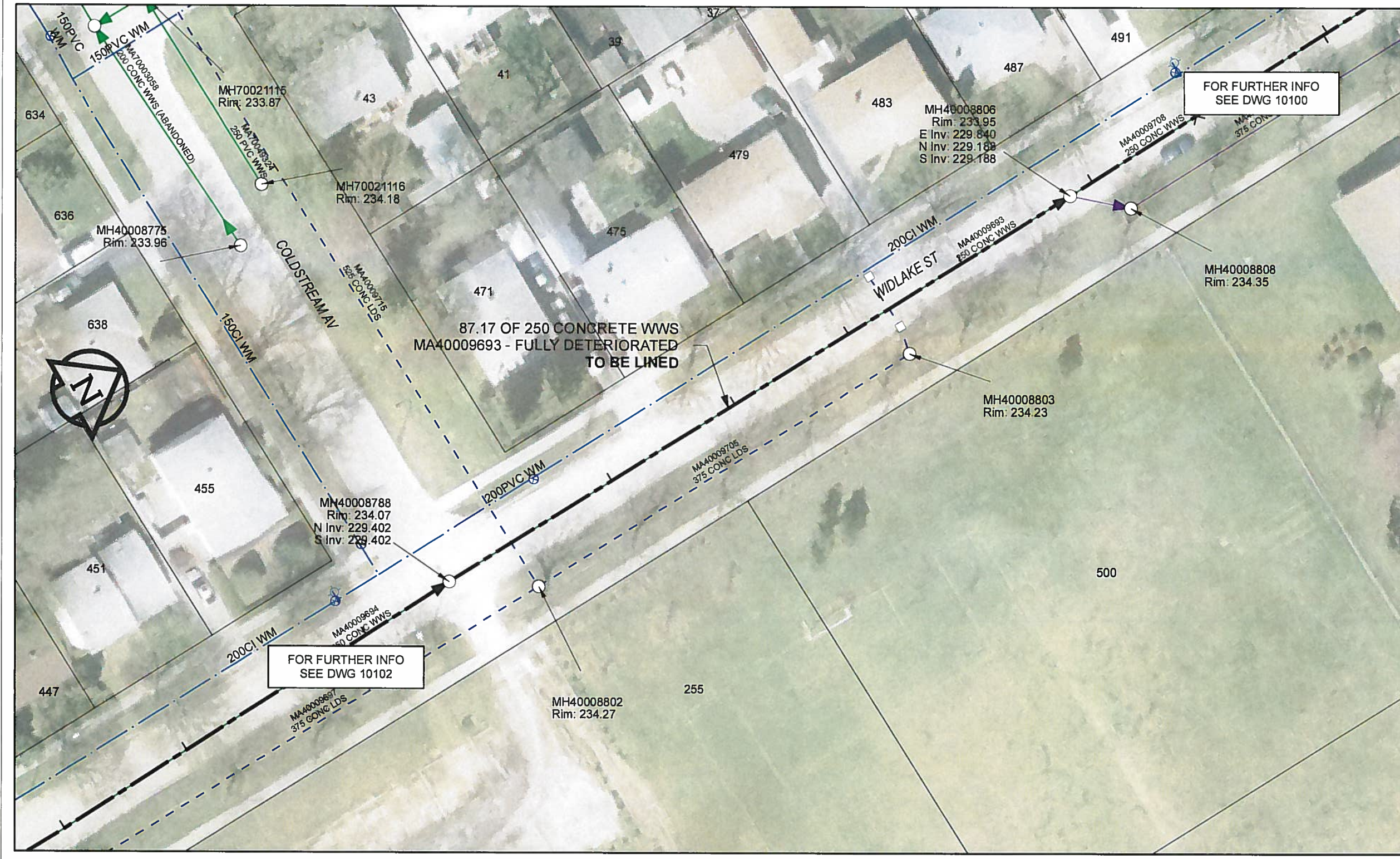


B SIZE 11" X 17" (279mm x 432mm)

FILE NAME: 60224031-01-C-106-R0X.PDF Saved By: JZ



**SEWER JUNCTION INFORMATION**

REF MH*	DIST FROM* REF MH	SIZE*	CLOCK AT*
MH40008788	22.80	150Ø	11
MH40008788	40.10	150Ø	11
MH40008788	56.00	150Ø	11
MH40008788	72.00	150Ø	11

\*JUNCTION INFORMATION FROM VIDEO INSPECTION

FOR FURTHER INFO SEE DWG 10100

FOR FURTHER INFO SEE DWG 10102

**WARNING**  
 IF POWER EQUIPMENT OR EXPLOSIVES ARE TO BE USED FOR EXCAVATION ON THIS PROJECT, THE CONTRACTOR MUST:  
 1) NOTIFY THE GAS COMPANY OF THE PROPOSED LOCATION OF EXCAVATION.  
 2) TAKE PRECAUTION TO AVOID DAMAGE TO GAS COMPANY INSTALLATIONS.  
 SEE PROVINCIAL REGULATION 140/92 FOR DETAILS

**AECOM**  
 Certificate of Authorization  
 AECOM Canada Ltd.  
 No. 4671 Date: 12/02/16

**METRIC**  
 WHOLE NUMBERS INDICATE MILLIMETRES  
 DECIMALIZED NUMBERS INDICATE METRES

0 2.5 5 10 15 20  
 Meters

BID OPPORTUNITY NO.1048-2011

AECOM REVIEW DRFT CHK

**LOCATION APPROVED UNDERGROUND STRUCTURES**  
 SUPR. U/G STRUCTURES DATE COMMITTEE  
 NOTE:  
 LOCATION OF UNDERGROUND STRUCTURES AS SHOWN ARE BASED ON THE BEST INFORMATION AVAILABLE. BUT NO GUARANTEE IS GIVEN THAT ALL EXISTING UTILITIES ARE SHOWN OR THAT THE GIVEN LOCATIONS ARE EXACT. CONFIRMATION OF EXISTENCE AND EXACT LOCATION OF ALL SERVICES MUST BE OBTAINED FROM THE INDIVIDUAL UTILITIES BEFORE PROCEEDING WITH CONSTRUCTION.

Can-Net GPS Reference Station WINN/810

NO.	ISSUED FOR CONSTRUCTION	YYMM/DD	BY
0	ISSUED FOR CONSTRUCTION	12/02/21	JZ
	REVISIONS		

**AECOM**

DESIGNED BY	ALD	CHECKED BY	PL
DRAWN BY	JZ	APPROVED BY	<i>Bygonlelebe</i>
HOR. SCALE	1:500	RELEASED FOR CONSTRUCTION	
VERT. SCALE	N/A	DATE	12/02/16

PROFESSIONAL'S SEAL  
 PROVINCE OF MANITOBA  
 K. FITCHETT  
 REGISTERED ENGINEER  
 CONSULTANT DRAWING NO. 60224031-01-C-106-R0X.mxd

**THE CITY OF WINNIPEG WATER AND WASTE DEPARTMENT**

2011 WASTE WATER SEWER RENEWALS  
 BY CIPP LINING  
 CONTRACT 20  
 WIDLAKE ST  
 COLDSTREAM AV TO 87.1m N OF COLDSTREAM AV

SHEET 106 OF 112  
 CITY DRAWING NUMBER 10101 REV 0