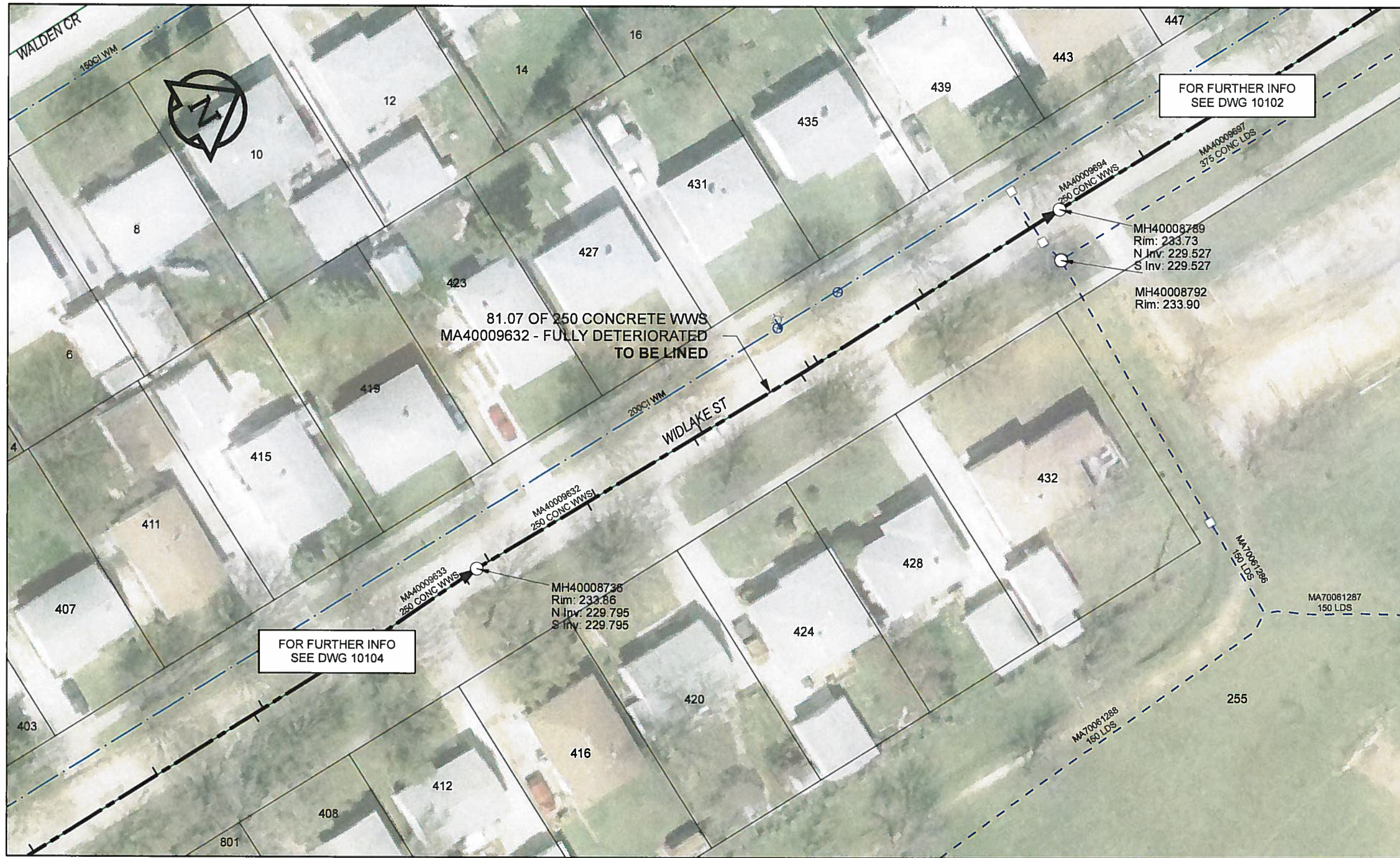


B SIZE 11" X 17" (279mm x 432mm)

FILE NAME: 60224031-01-C-108-R0X.PDF Saved By: JZ



**SEWER JUNCTION INFORMATION**

REF MH*	DIST FROM* REF MH	SIZE*	CLOCK AT*
MH40008736	1.70	150Ø	11
MH40008736	15.20	150Ø	02
MH40008736	16.50	150Ø	11
MH40008736	30.00	150Ø	01
MH40008736	31.20	150Ø	11
MH40008736	44.80	150Ø	01
MH40008736	46.00	150Ø	10
MH40008736	47.20	150Ø	10
MH40008736	60.70	150Ø	01
MH40008736	62.00	150Ø	11
MH40008736	76.90	150Ø	10

\*JUNCTION INFORMATION FROM VIDEO INSPECTION

FOR FURTHER INFO  
SEE DWG 10104

FOR FURTHER INFO  
SEE DWG 10102

**WARNING**  
IF POWER EQUIPMENT OR EXPLOSIVES ARE TO BE USED FOR EXCAVATION ON THIS PROJECT, THE CONTRACTOR MUST:  
1) NOTIFY THE GAS COMPANY OF THE PROPOSED LOCATION OF EXCAVATION.  
2) TAKE PRECAUTION TO AVOID DAMAGE TO GAS COMPANY INSTALLATIONS.  
SEE PROVINCIAL REGULATION 140/92 FOR DETAILS

**AECOM**  
Certificate of Authorization  
AECOM Canada Ltd.  
No. 4671 Date: 12/02/11

**METRIC**  
WHOLE NUMBERS INDICATE MILLIMETRES  
DECIMALIZED NUMBERS INDICATE METRES

0 2.5 5 10 15 20  
Meters

BID OPPORTUNITY NO.1048-2011

AECOM REVIEW DRAFT CHK

**LOCATION APPROVED UNDERGROUND STRUCTURES**  
Can-Net GPS Reference Station WINN/810

SUPR. U/G STRUCTURES DATE COMMITTEE

**NOTE:**  
LOCATION OF UNDERGROUND STRUCTURES AS SHOWN ARE BASED ON THE BEST INFORMATION AVAILABLE. BUT NO GUARANTEE IS GIVEN THAT ALL EXISTING UTILITIES ARE SHOWN OR THAT THE GIVEN LOCATIONS ARE EXACT. CONFIRMATION OF EXISTENCE AND EXACT LOCATION OF ALL SERVICES MUST BE OBTAINED FROM THE INDIVIDUAL UTILITIES BEFORE PROCEEDING WITH CONSTRUCTION.

NO.	REVISIONS	YY/MM/DD	BY
0	ISSUED FOR CONSTRUCTION	12/02/11	JZ

**AECOM**

DESIGNED BY	ALD	CHECKED BY	PC
DRAWN BY	JZ	APPROVED BY	[Signature]
HOR. SCALE	1:500	RELEASED FOR CONSTRUCTION	[Signature]
VERT. SCALE	N/A	DATE	12/02/11

PROFESSIONAL'S SEAL  
PROVINCE OF MANITOBA  
K. FITCHETT  
REGISTERED ENGINEER  
CONSULTANT DRAWING NO. 60224031-01-C-108-R0X.mxd

**THE CITY OF WINNIPEG WATER AND WASTE DEPARTMENT**

2011 WASTE WATER SEWER RENEWALS  
BY CIPP LINING  
CONTRACT 20  
WIDLAKE ST  
81.3m N OF VICTORIA AV E TO 162.5m N OF VICTORIA AV E

SHEET 108 OF 112  
CITY DRAWING NUMBER  
**10103** REV 0