

WATER SERVICE INFORMATION					
ADDRESS	SIZE(mm) & TYPE	SIZE(mm) & TYPE (PROP)	SHORT & LONG MEASUREMENT	CORP. LOCATION	REMARKS
561 BANNING ST	20	12	1.48 SNL HSE	OPP S/C	-
RESIDENTIAL	COPPER	LEAD	168.50 SSL ELLICE		RENEW W/20 COPPER
563 BANNING ST	20	20	1.07 NSL HSE	0.1 S OF S/C	-
RESIDENTIAL	COPPER	COPPER	164.14 SSL ELLICE		RENEW W/20 COPPER
565 BANNING ST	20	12	2.80 NSL HSE	0.9 N OF S/C	-
RESIDENTIAL	COPPER	LEAD	153.53 SSL ELLICE		RENEW W/20 COPPER
567 BANNING ST	20	12	0.15 SNL HSE	OPP S/C	WYE'D BEFORE C/S W/ #569
RESIDENTIAL	COPPER	LEAD	141.21 SSL ELLICE		RENEW W/20 COPPER
569 BANNING ST	20	12	1.27 NSL HSE	0.5 S OF S/C	-
RESIDENTIAL	COPPER	LEAD	140.78 SSL ELLICE		RENEW W/20 COPPER
571 BANNING ST	-	12	OPP NL HSE	OPP S/C	WYE'D BEFORE C/S W/ #573
RESIDENTIAL	-	LEAD	124.13 SSL ELLICE		RENEW W/20 COPPER
572 BANNING ST	20	12	1.59 SNL HSE	0.5 N OF S/C	-
RESIDENTIAL	COPPER	COPPER	168.48 SSL ELLICE		RENEW W/20 COPPER
573 BANNING ST	-	12	0.33 SSL HSE	0.8 S OF S/C	-
RESIDENTIAL	-	LEAD	123.27 SSL ELLICE		RENEW W/20 COPPER
574 BANNING ST	20	12	OPP NL HSE	0.7 N OF S/C	-
RESIDENTIAL	COPPER	LEAD	159.51 SSL ELLICE		RENEW W/20 COPPER
575 BANNING ST	16	12	0.60 SNL HSE	0.6 N OF S/C	-
RESIDENTIAL	LEAD	LEAD	109.42 SSL ELLICE		RENEW W/20 COPPER
576 BANNING ST	20	12	OPP SL HSE	0.3 S OF S/C	-
RESIDENTIAL	COPPER	COPPER	158.54 SSL ELLICE		RENEW W/20 COPPER
577 BANNING ST	16	12	1.79 SNL HSE	0.6 N OF S/C	-
RESIDENTIAL	LEAD	LEAD	109.42 SSL ELLICE		RENEW W/20 COPPER
579 BANNING ST	20	12	0.27 SNL HSE	OPP S/C	-
RESIDENTIAL	COPPER	LEAD	93.19 SSL ELLICE		RENEW W/20 COPPER
581 BANNING ST	20	20	OPP SL HSE	0.6 S OF S/C	-
RESIDENTIAL	COPPER	COPPER	92.56 SSL ELLICE		RENEW W/20 COPPER
582 BANNING ST	12	12	1.52 NSL HSE	0.9 S OF S/C	-
RESIDENTIAL	LEAD	LEAD	149.32 SSL ELLICE		RENEW W/20 COPPER
584 BANNING ST	20	20	2.62 SNL HSE	OPP S/C	-
RESIDENTIAL	COPPER	COPPER	135.50 SSL ELLICE		RENEW W/20 COPPER
586 BANNING ST	20	20	OPP SL HSE	0.6 S OF S/C	-
RESIDENTIAL	COPPER	COPPER	134.44 SSL ELLICE		RENEW W/20 COPPER
588 BANNING ST	20	20	2.45 SNL HSE	0.3 S OF S/C	-
RESIDENTIAL	LEAD	LEAD	122.05 SSL ELLICE		RENEW W/20 COPPER
590 BANNING ST	20	12	OPP SL HSE	OPP S/C	-
RESIDENTIAL	COPPER	LEAD	117.93 SSL ELLICE		RENEW W/20 COPPER
592 BANNING ST	12	12	0.31 SSL HSE	0.2 S OF S/C	-
RESIDENTIAL	LEAD	LEAD	109.94 SSL ELLICE		RENEW W/20 COPPER
594 BANNING ST	12	12	OPP SL HSE	0.6 S OF S/C	-
RESIDENTIAL	LEAD	LEAD	99.80 SSL ELLICE		RENEW W/20 COPPER
600 BANNING ST	16	12	2.55 NSL HSE	0.3 S OF S/C	-
RESIDENTIAL	LEAD	LEAD	89.86 SSL ELLICE		RENEW W/20 COPPER
602 BANNING ST	20	20	0.11 SNL HSE	0.4 N OF S/C	-
RESIDENTIAL	COPPER	COPPER	78.36 SSL ELLICE		RENEW W/20 COPPER
604 BANNING ST	16	12	4.91 SSL HSE	0.3 S OF S/C	-
RESIDENTIAL	LEAD	LEAD	89.86 SSL ELLICE		RENEW W/20 COPPER
606 BANNING ST	20	20	0.95 SNL HSE	OPP S/C	-
RESIDENTIAL	COPPER	COPPER	77.88 SSL ELLICE		RENEW W/20 COPPER
608 BANNING ST	20	20	0.52 NSL HSE	0.2 N OF S/C	-
RESIDENTIAL	COPPER	COPPER	76.58 SSL ELLICE		RENEW W/20 COPPER
610 BANNING ST	20	12	OPP SL HSE	0.3 N OF S/C	-
RESIDENTIAL	COPPER	LEAD	69.38 SSL ELLICE		RENEW W/20 COPPER
612 BANNING ST	20	16	2.0 SNL HSE	OPP S/C	-
RESIDENTIAL	COPPER	LEAD	60.04 SSL ELLICE		RENEW W/20 COPPER

*SERVICES TO BE RENEWED TO R ALL OTHERS TO BE RECONNECTED

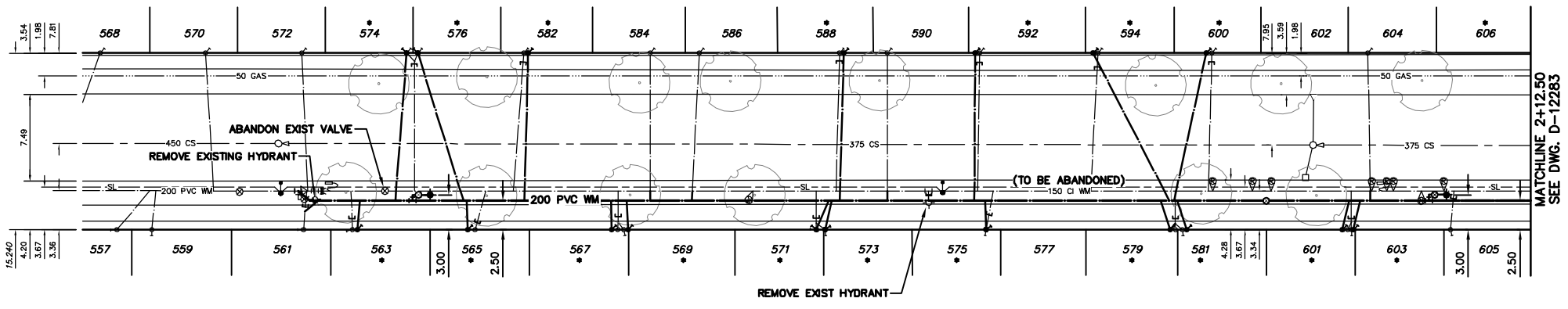
NOTE: CHAINAGES SHOWN ARE ALONG E R OF BANNING ST

BANNING STREET



CONSTRUCTION NOTES

1. EXPOSE EXISTING WATERMAIN & CONFIRM INVERTS PRIOR TO CONSTRUCTION.
2. LOCATION OF ALL SERVICES TO BE CONFIRMED IN THE FIELD.
3. INSTALL WATERMAIN BY TRENCHLESS METHODS.
4. TRENCHES AND EXCAVATIONS WITHIN 1 METRE OF A PAVED AREA INCLUDING SIDEWALKS SHALL BE CLASS 3 BACKFILL.
5. ALL MATERIALS SHALL CONFORM TO THE CITY OF WINNIPEG STANDARD CONSTRUCTION SPECIFICATIONS.
6. MINIMUM COVER TO TOP OF WATERMAIN SHALL BE 2.4 m.
7. REPLACE ALL EXISTING LEAD SERVICES FROM PROPOSED WATERMAIN TO R.
8. NOTIFY ALL AFFECTED RESIDENTS AND BUSINESSES 24 HOURS IN ADVANCE OF ANY WATER SHUTDOWNS OR DISRUPTION OF SERVICE.



METRIC

WHOLE NUMBERS INDICATE MILLIMETRES
DECIMALIZED NUMBERS INDICATE METRES

NOTE: ALL VALVES TO BE INSTALLED COUNTERCLOCKWISE TO CLOSE

WARNING

IF POWER EQUIPMENT OR EXPLOSIVES ARE TO BE USED FOR EXCAVATION ON THIS PROJECT THE CONTRACTOR MUST:
1) NOTIFY THE GAS COMPANY OF THE PROPOSED LOCATION OF EXCAVATION.
2) TAKE PRECAUTION TO AVOID DAMAGE TO GAS COMPANY INSTALLATIONS.
SEE PROVINCIAL REGULATION 210/72 FOR DETAILS

200 WM	WATERMAIN	200 WM	SL, HYDRO	150 WM	WATERMAIN	150 WM
⊕	HYDRANT	⊕	MTS	⊕	HYDRANT	⊕
⊙	VALVE	⊙	TRAFFIC SIGNALS	⊙	VALVE	⊙
525 LDS	LAND DRAINAGE SEWER	525 LDS	GAS	50 GAS	300 LDS	LAND DRAINAGE SEWER
375 WWS	WASTEWATER SEWER	375 WWS	SURVEY BAR	250 WWS	WASTEWATER SEWER	250 WWS
○	MANHOLE	●	FENCE	⊕	PROFILE	
□	CATCH BASIN	■	POLE - HYDRO, MTS	⊕	GROUND ABOVE PIPE	
▽	CURB INLET	▽	CURB STOP	⊕	DITCH (NORTH & WEST)	
∇	REDUCER	∇	GUY ANCHOR	⊕	DITCH (SOUTH & EAST)	
X	COUPLER	X	LIGHT STANDARD	⊕	GUTTER (NORTH & WEST)	
⊕	ANODE	⊕	TREE	⊕	GUTTER (SOUTH & EAST)	
EXISTING	LEGEND-PLAN	PROPOSED	EXISTING	LEGEND-PLAN	PROPOSED	EXISTING
				LEGEND-PROFILE	PROPOSED	

LOCATION APPROVED
UNDERGROUND STRUCTURES

SUPV. U/G STRUCTURES COMMITTEE DATE

NOTE:
LOCATION OF UNDERGROUND STRUCTURES AS SHOWN ARE BASED ON THE BEST INFORMATION AVAILABLE BUT NO GUARANTEE IS GIVEN THAT ALL EXISTING UTILITIES ARE SHOWN OR THAT THE GIVEN LOCATIONS ARE EXACT. CONFIRMATION OF EXISTENCE AND EXACT LOCATION OF ALL SERVICES MUST BE OBTAINED FROM THE INDIVIDUAL UTILITIES BEFORE PROCEEDING WITH CONSTRUCTION.

NO.	REVISIONS	DATE	BY

CITY OF WINNIPEG
WATER AND WASTE
ENGINEERING DIVISION

DESIGNED BY: RC
CHECKED BY: SC

DRAWN BY: DVG
APPROVED BY: KZ

HOR. SCALE: 1:250
VERTICAL: 1:50

RELEASED FOR CONSTRUCTION

DATE: 2011 01 17

ENGINEER'S SEAL

ORIGINAL SIGNED BY R.W. CARROL
11/01/18

BID OPPORTUNITY 11-2011
FILENAME: D-12284.dwg
PLOT DATE: 2011 01 19

THE CITY OF WINNIPEG
WATER AND WASTE DEPARTMENT

2011 WATERMAIN RENEWALS
CONTRACT 2
BANNING STREET
62.50 S OF ELLICE AVENUE TO
175 S OF ELLICE AVENUE

SHEET 2 OF 12
CITY DRAWING NUMBER
D-12284