

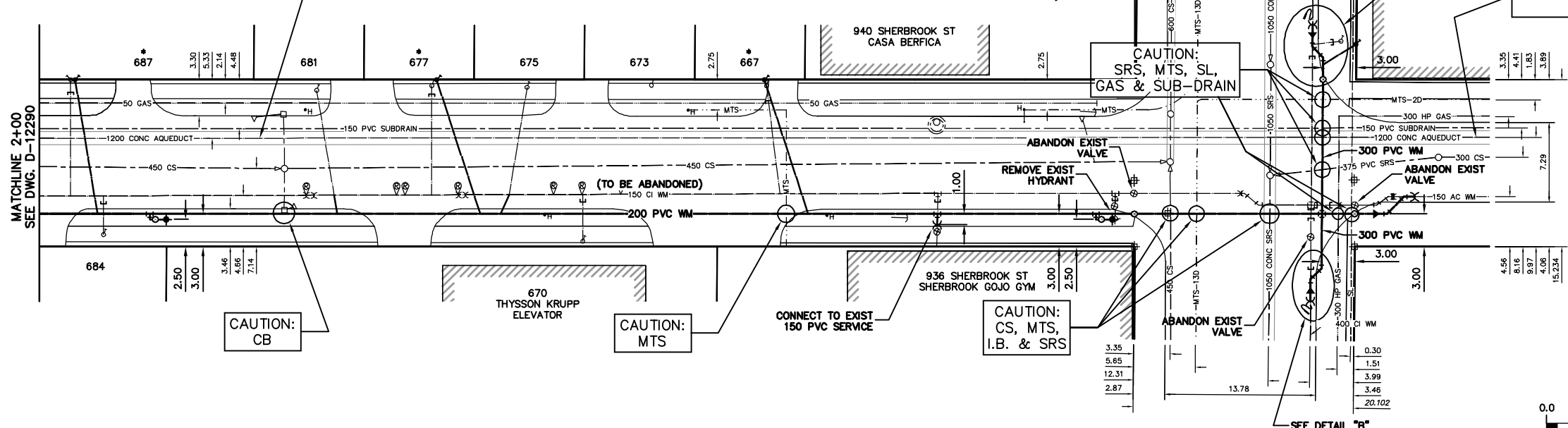
WATER SERVICE INFORMATION					
ADDRESS	SIZE(mm) & TYPE (STREET)	SIZE(mm) & TYPE (PROP.)	SHORT & LONG MEASUREMENT	CORP. LOCATION	REMARKS
667 PACIFIC AVE	12 LEAD	20 COPPER	OPP EHL	1.4 E OF S/C	RENEW TO R W/ 20 COPPER
670 PACIFIC AVE	20 COPPER	20 COPPER	33.68 WML SHERBROOK	OPP OF S/C	
673 PACIFIC AVE	20 COPPER	20 COPPER	49.98 WML SHERBROOK		
675 PACIFIC AVE	20 COPPER	20 COPPER	2.40 WEHL		
677 PACIFIC AVE	12 LEAD	12 COPPER	44.20 WML SHERBROOK		
681 PACIFIC AVE	20 COPPER	20 COPPER	2.41 WEHL	1.83 W OF S/C	
684 PACIFIC AVE	20 COPPER	20 COPPER	55.78 WML SHERBROOK		
687 PACIFIC AVE	12 LEAD	12 COPPER	3.80 WEHL	OPP OF S/C	RENEW TO R W/ 20 COPPER
688 PACIFIC AVE	20 COPPER	20 COPPER	64.31 WML SHERBROOK		
689 PACIFIC AVE	20 COPPER	20 COPPER	74.98 WML SHERBROOK		
684 PACIFIC AVE	20 COPPER	20 COPPER	94.14 WML SHERBROOK	OPP OF S/C	
687 PACIFIC AVE	12 LEAD	12 COPPER	3.90 WEHL	OPP OF S/C	RENEW TO R W/ 20 COPPER
688 PACIFIC AVE	20 COPPER	20 COPPER	97.23 WML SHERBROOK		
936 SHERBROOK ST	150 PVC	150 PVC	8.34 EWHL	OPP OF S/C	
940 SHERBROOK ST	38 PVC	38 PVC	17.76 WML SHERBROOK	OPP OF S/C	SERV. OFF SHERBROOK
941 SHERBROOK ST	25 COPPER	25 COPPER	10.33 NNL PACIFIC	OPP OF S/C	RENEW TO R W/ 25 COPPER
COMMERCIAL	25 LEAD	25 LEAD	3.37 NSL BLDG	0.2 S OF S/C	

* SERVICES TO BE RENEWED TO R UPON CONFIRMATION BY THE CONTRACTOR OF EXISTING LEAD SERVICE. OBTAIN APPROVAL FROM CONTRACT ADMINISTRATOR PRIOR TO RENEWAL.

NOTE: CHAINAGES SHOWN ARE ALONG S. R. OF PACIFIC AVE.

CAUTION:
1200 AQUEDUCT
EXPOSE BY SOFT DIG METHODS PRIOR TO CONSTRUCTION TO CONFIRM DEPTH

CAUTION:
1200 AQUEDUCT
EXPOSE BY SOFT DIG METHODS PRIOR TO CONSTRUCTION TO CONFIRM DEPTH



- CONSTRUCTION NOTES**
- EXPOSE EXISTING WATERMAIN & CONFIRM INVERTS PRIOR TO CONSTRUCTION.
 - LOCATION OF ALL SERVICES TO BE CONFIRMED IN THE FIELD.
 - INSTALL WATERMAIN BY TRENCHLESS METHODS.
 - TRENCHES AND EXCAVATIONS WITHIN 1 METRE OF A PAVED AREA INCLUDING SIDEWALKS SHALL BE CLASS 3 BACKFILL.
 - ALL MATERIALS SHALL CONFORM TO THE CITY OF WINNIPEG STANDARD CONSTRUCTION SPECIFICATIONS.
 - MINIMUM COVER TO TOP OF WATERMAIN SHALL BE 2.4 m.
 - REPLACE ALL EXISTING LEAD SERVICES FROM PROPOSED WATERMAIN TO R.
 - NOTIFY ALL AFFECTED RESIDENTS AND BUSINESSES 24 HOURS IN ADVANCE OF ANY WATER SHUTDOWNS OR DISRUPTION OF SERVICE.

METRIC
WHOLE NUMBERS INDICATE MILLIMETRES
DECIMALIZED NUMBERS INDICATE METRES

WARNING
IF POWER EQUIPMENT OR EXPLOSIVES ARE TO BE USED FOR EXCAVATION ON THIS PROJECT THE CONTRACTOR MUST:
1) NOTIFY THE GAS COMPANY OF THE PROPOSED LOCATION OF EXCAVATION.
2) TAKE PRECAUTION TO AVOID DAMAGE TO GAS COMPANY INSTALLATIONS.
SEE PROVINCIAL REGULATION 210/72 FOR DETAILS

200 WM	WATERMAIN	200 WM	SL, HYDRO	150 WM	WATERMAIN	150 WM
⊕	HYDRANT	⊕	MTS	⊕	HYDRANT	⊕
⊙	VALVE	⊙	TRAFFIC SIGNALS	⊙	VALVE	⊙
525 LDS	LAND DRAINAGE SEWER	525 LDS	GAS	50 GAS	300 LDS	LAND DRAINAGE SEWER
375 WWS	WASTEWATER SEWER	375 WWS	SURVEY BAR	250 WWS	WASTEWATER SEWER	250 WWS
○	MANHOLE	○	FENCE	⊕	PROFILE	
□	CATCH BASIN	□	POLE - HYDRO, MTS	⊕	GROUND ABOVE PIPE	
▽	CURB INLET	▽	CURB STOP	⊕	☉ DITCH (NORTH & WEST)	
⊘	REDUCER	⊘	GUY ANCHOR	⊕	☉ DITCH (SOUTH & EAST)	
⊕	COUPLER	⊕	LIGHT STANDARD	⊕	GUTTER (NORTH & WEST)	
⊕	ANODE	⊕	TREE	⊕	GUTTER (SOUTH & EAST)	
EXISTING	LEGEND-PLAN	PROPOSED	EXISTING	LEGEND-PLAN	PROPOSED	EXISTING

LOCATION APPROVED
UNDERGROUND STRUCTURES

SUPV. U/G STRUCTURES COMMITTEE DATE

NOTE:
LOCATION OF UNDERGROUND STRUCTURES AS SHOWN ARE BASED ON THE BEST INFORMATION AVAILABLE BUT NO GUARANTEE IS GIVEN THAT THE GIVEN LOCATIONS ARE EXACT. CONFIRMATION OF EXISTENCE AND EXACT LOCATION OF ALL SERVICES MUST BE OBTAINED FROM THE INDIVIDUAL UTILITIES BEFORE PROCEEDING WITH CONSTRUCTION.

B.M. ELEV.	FIELD BOOK #
POSTED TO LBIS	
NO.	REVISIONS

CITY OF WINNIPEG
WATER AND WASTE
ENGINEERING DIVISION

DESIGNED BY: RC
CHECKED BY: SC

DRAWN BY: CJH
APPROVED BY: KZ

HOR. SCALE: 1:250
VERTICAL: 1:50

RELEASED FOR CONSTRUCTION

DATE: 2011 01 17

ENGINEER'S SEAL

ORIGINAL SIGNED BY R.W. CARROL
11/01/18

THE CITY OF WINNIPEG
WATER AND WASTE DEPARTMENT

2011 WATERMAIN RENEWALS
CONTRACT 2
PACIFIC AVENUE
100 W OF SHERBROOK STREET TO SHERBROOK STREET

SHEET 9 OF 12
CITY DRAWING NUMBER
D-12291

BID OPPORTUNITY: 11-2011
FILENAME: D-12291.dwg
PLOT DATE: 2011 01 19