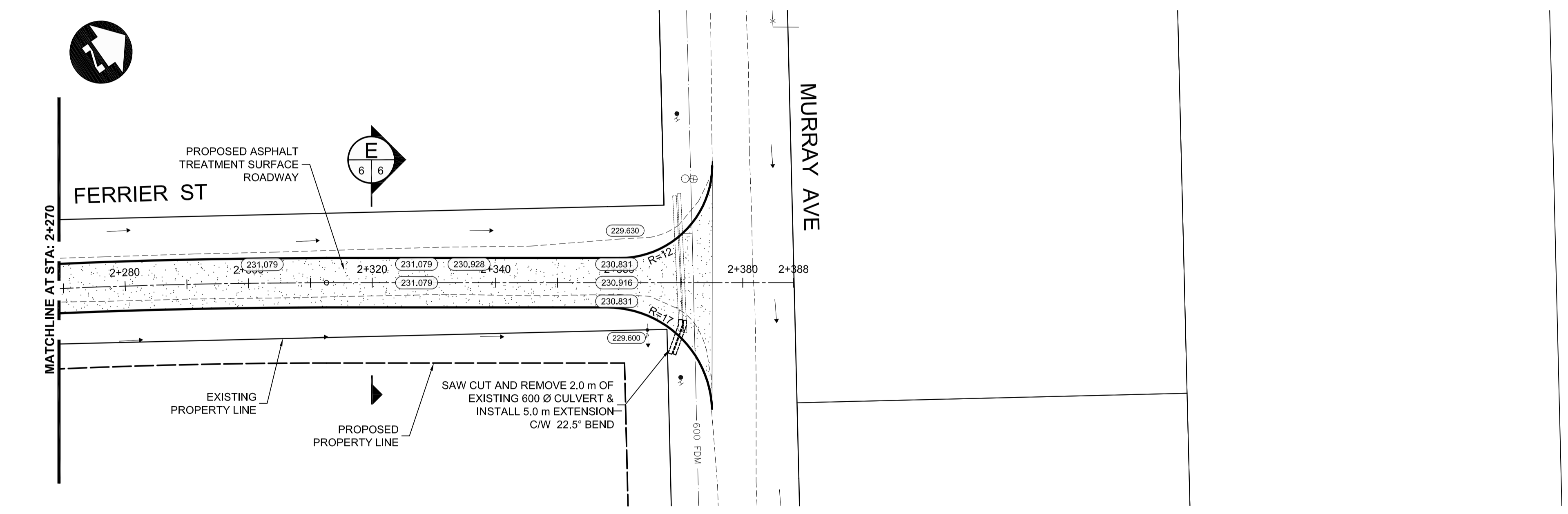
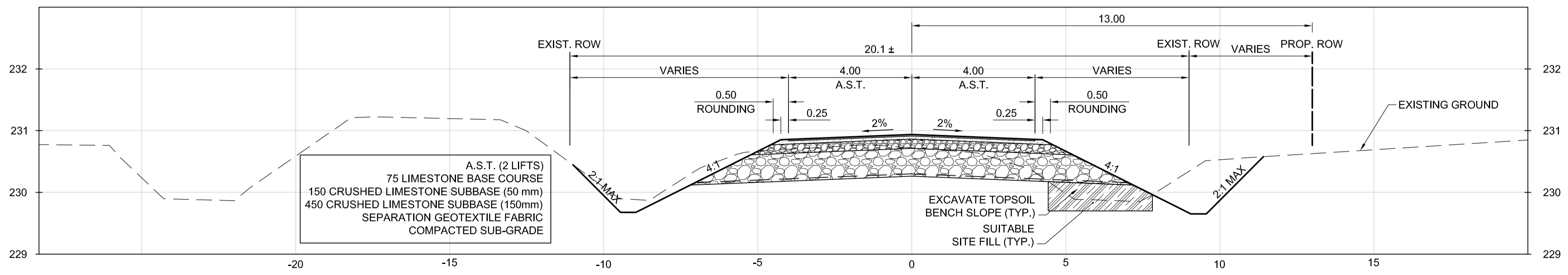


- CONSTRUCTION NOTES:**
- CONTRACTOR SHALL TAKE PRECAUTIONARY STEPS TO AVOID DAMAGE FROM CONSTRUCTION ACTIVITIES TO EXISTING BOULEVARDS AND TREES WITHIN THE LIMITS OF CONSTRUCTION.
 - LOCATION OF EXISTING SERVICES ARE TO BE CONFIRMED IN THE FIELD BY THE CONTRACTOR.
 - TIE-INS TO BE VERIFIED IN THE FIELD BY THE CONTRACT ADMINISTRATOR.
 - BOULEVARD REPLACEMENT TO BE FINALIZED IN THE FIELD BY THE CONTRACT ADMINISTRATOR.
 - ALL APPROACHES TO RECEIVE NEW CSP CULVERTS AS DIRECTED BY THE CONTRACT ADMINISTRATOR.
 - BACK SLOPES OF DITCHES TO BE GRADED BACK AT 4:1 WHERE POSSIBLE TO A MAX OF 2:1



METRIC
WHOLE NUMBERS INDICATE MILLIMETRES
DECIMALIZED NUMBERS INDICATE METRES

- WARNING**
- IF POWER EQUIPMENT OR EXPLOSIVES ARE TO BE USED FOR EXCAVATION ON THIS PROJECT THE CONTRACTOR MUST:
- NOTIFY THE GAS COMPANY OF THE PROPOSED LOCATION OF EXCAVATION.
 - TAKE PRECAUTION TO AVOID DAMAGE TO GAS COMPANY INSTALLATIONS SEE PROVINCIAL REGULATION 210/72 FOR DETAILS.
 - OBTAIN EXCAVATION PERMITS PRIOR TO CONSTRUCTION.



E FERRIER ST - STA: 2+320
SCALE - H 1:100, V 1:50



EXISTING	LEGEND-PLAN	PROPOSED	EXISTING	LEGEND-PLAN	PROPOSED	EXISTING	LEGEND-PROFILE	PROPOSED
150 WM	WATERMAIN	150 WM	HYDRO	HYDRO	HYDRO	150 mm W.M.	WATERMAIN	150 mm W.M.
HYDRANT VALVE		MTS	MTS	CONCRETE		HYDRANT VALVE		
300 LDS	LAND DRAINAGE SEWER	300 LDS		ASPHALT		300 mm L.D.S.	LAND DRAINAGE SEWER	300 mm L.D.S.
250 WWS	WASTE WATER SEWER	250 WWS		PLANING		250 mm W.W.S.	WASTE WATER SEWER	250 mm W.W.S.
MANHOLE				SIDEWALK		PROFILE		
CATCH BASIN				PAVING STONES		NORTH/WEST GUTTER		
CURB INLET				PARTIAL DEPTH REPAIR		SOUTH/EAST GUTTER		
JUNCTIONS				PROPERTY LINE		NORTH/WEST P/L		
CULVERT				SURVEY BAR		SOUTH/EAST P/L		
100 GAS	GAS	100 GAS		CURB RAMP		DRAINAGE ARROW		

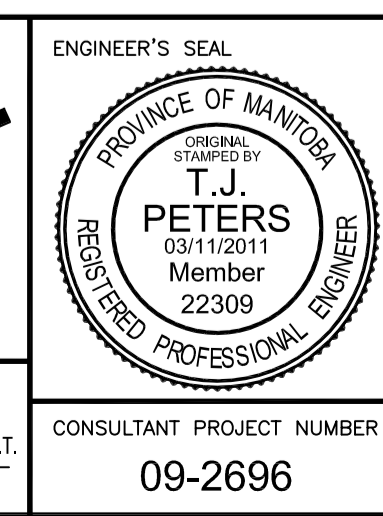
UNDERGROUND STRUCTURES

SUPPLY U/G STRUCTURES COMMITTEE DATE

NOTE:
LOCATION OF UNDERGROUND STRUCTURES AS SHOWN ARE BASED ON THE BEST INFORMATION AVAILABLE BUT NO GUARANTEE IS GIVEN THAT ALL EXISTING UTILITIES ARE SHOWN OR THAT THE GIVEN LOCATIONS ARE EXACT. CONFIRMATION OF EXISTENCE AND EXACT LOCATION OF ALL SERVICES MUST BE OBTAINED FROM THE INDIVIDUAL UTILITIES BEFORE PROCEEDING WITH CONSTRUCTION.

NO.	REVISIONS	DATE	BY
2	ISSUED FOR TENDER	03/11/11	TJP
1	ISSUED FOR REVIEW	02/17/11	TJP

DESIGNED BY	RTP
DRAWN BY	TJH
CHECKED BY	ORIGINAL SIGNED BY TARAN J. PETERS
APPROVED BY	ORIGINAL SIGNED BY DAVID P. KRAHN
HOR. SCALE	1:500
VERTICAL	1:25
RELEASED FOR CONSTRUCTION	ORIGINAL SIGNED BY BRENT KELLET, C.E.T.
DATE	03/11/2011



THE CITY OF WINNIPEG
PUBLIC WORKS DEPARTMENT

2011 GRANULAR ROADWAY IMPROVEMENTS
FERRIER STREET
TEMPLETON AVENUE TO MURRAY AVENUE

PLAN-PROFILE - FERRIER ST - STA. 2+270 TO 2+380

CITY DRAWING NUMBER -
SHEET 06 OF 06
CONSULTANT DRAWING NUMBER -

CONSULTANT PROJECT NUMBER 09-2696

G:\CAD\092696\Contract\Current\Plan-Profile-Section.dwg