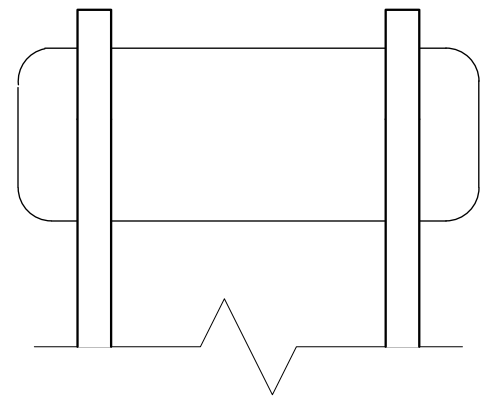
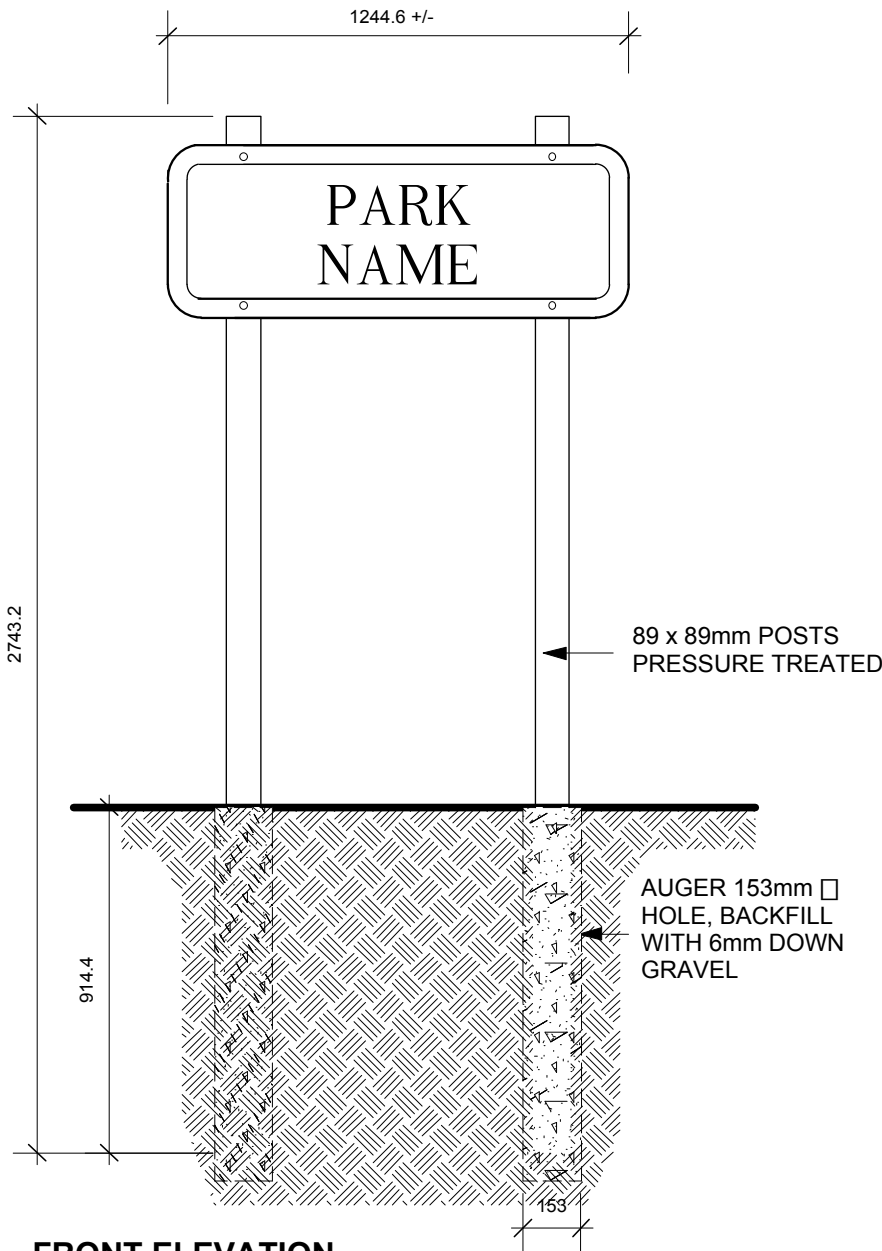


Drawing Title:

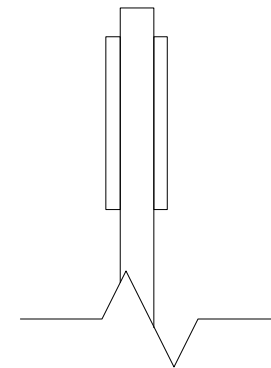
ENGLISH PARK SIGN INSTALLATION

Drawing No:

SCD-717AR



BACK ELEVATION



SIDE ELEVATION
(DOUBLE SIDED SIGNS ONLY)

NOTE:

- * IF POSTS ARE COMPOSED OF CCA PRESSURE TREATED WOOD, ZINC PLATED BOLTS ARE SUFFICIENT.
- IF POSTS ARE COMPOSED OF ACQ PRESSURE TREATED WOOD, STAINLESS STEEL BOLTS MUST BE USED.

DIMENSIONS SHOWN ARE IN MILLIMETRES UNLESS OTHERWISE SPECIFIED

DATE: August 2003
SCALE: N.T.S.
DRAWN BY: ST

The City of Winnipeg
Planning, Property and Development Department
Planning and Land Use Division
Unit 15 - 30 Fort Street, Winnipeg, MB, R3C 4X5

