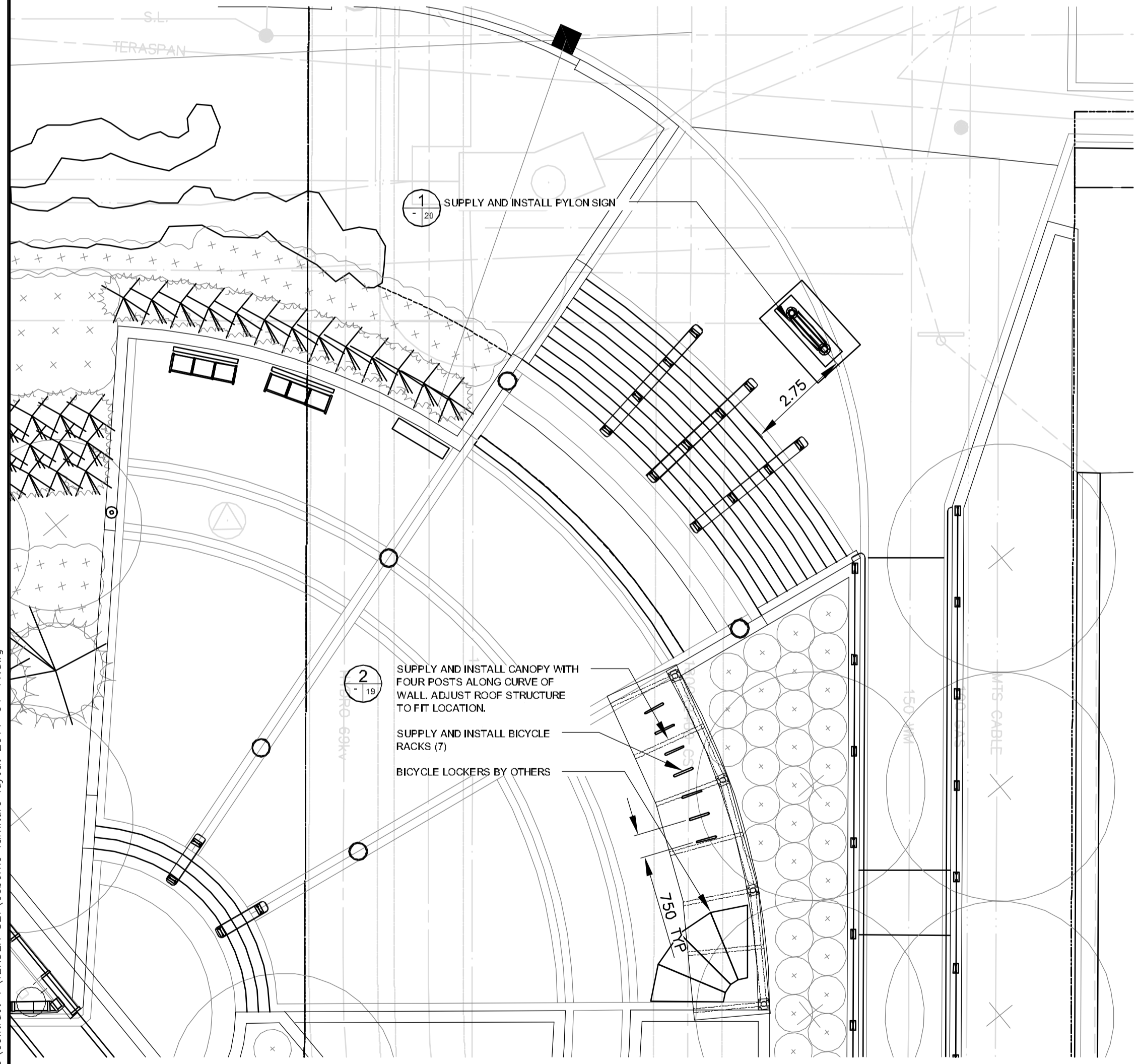


OSBORNE STATION WEST RAMP CANOPY AND SIGN  
1:100



OSBORNE STATION EAST PLAZA CANOPY AND SIGN  
1:100

LOCATION UNDERGROUND	APPROVED STRUCTURES	B.M. ELEV.	BM ELEV
SUPPLY, U/G STRUCTURES COMMITTEE	DATE		
NOTE: LOCATION OF UNDERGROUND STRUCTURES AS SHOWN ARE BASED ON THE BEST INFORMATION AVAILABLE BUT NO GUARANTEE IS GIVEN THAT ALL EXISTING UTILITIES ARE SHOWN OR THAT THE GIVEN LOCATIONS ARE EXACT. CONFIRMATION OF EXISTENCE AND EXACT LOCATION OF ALL SERVICES MUST BE OBTAINED FROM THE INDIVIDUAL UTILITIES BEFORE PROCEEDING WITH CONSTRUCTION.			
1	ISSUED FOR TENDER	20/04/11	JW
NO.	REVISIONS	DATE	BY

DESIGNED BY	SR/JW
DRAWN BY	PB
CHECKED BY	JW/SR
APPROVED BY	-
HOR. SCALE	AS NOTED
VERTICAL	
DATE	2011-04-20

RELEASED FOR CONSTRUCTION ORIGINAL SIGNED BY RANDY FINNIGS	DATE: APRIL 20, 2011
--	----------------------

DILLON CONSULTING

LANDSCAPE ARCHITECT'S SEAL  
  
 JACQUELINE L. WILKIE  
 member no. 75  
 APRIL 20, 2011  
 CONSULTANT PROJECT NO.  
 08-028

**THE CITY OF WINNIPEG**  
 TRANSIT DEPARTMENT

SOUTHWEST RAPID TRANSIT CORRIDOR - STAGE 1 STATION CONSTRUCTION, WARSAW RECONSTRUCTION & ASSOCIATED WORKS		CITY DRAWING NUMBER P-3325-15
OSBORNE STATION CANOPY AND SIGNAGE LAYOUT		SHEET 15 OF 28 CONSULTANT DRAWING NUMBER C7-L-5004-T