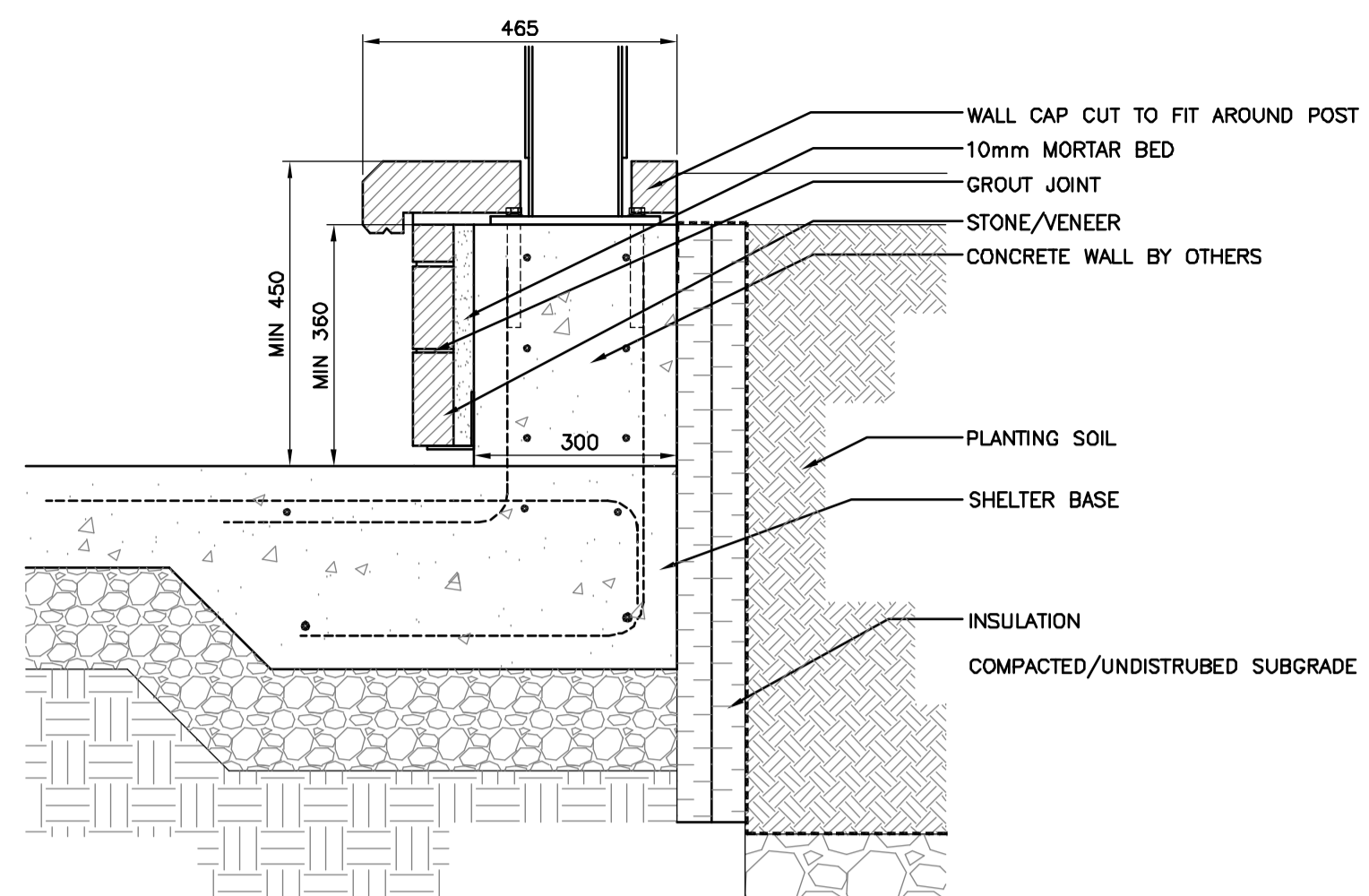
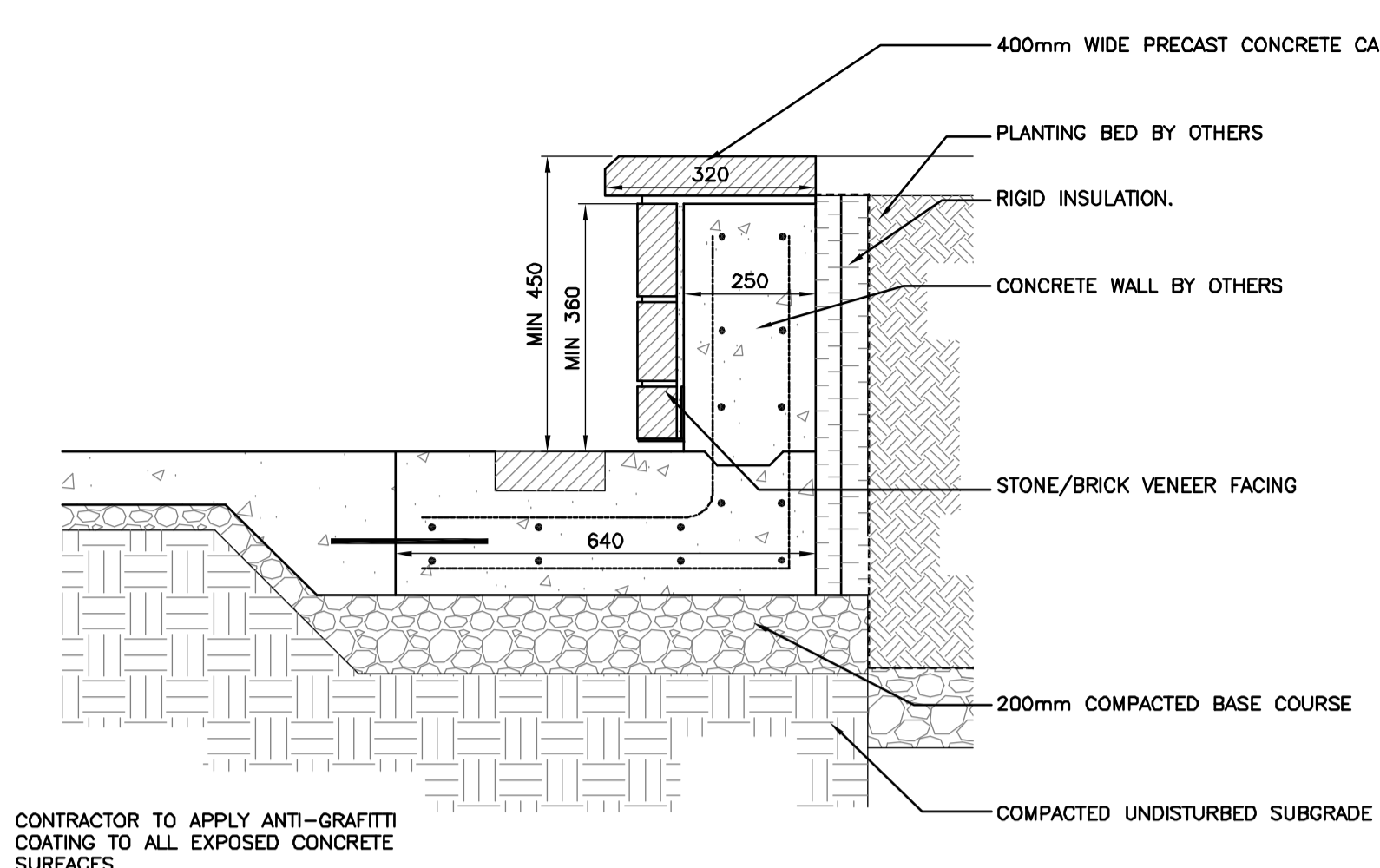


CONCRETE SHELTER WALL SECTION 1
N.T.S.

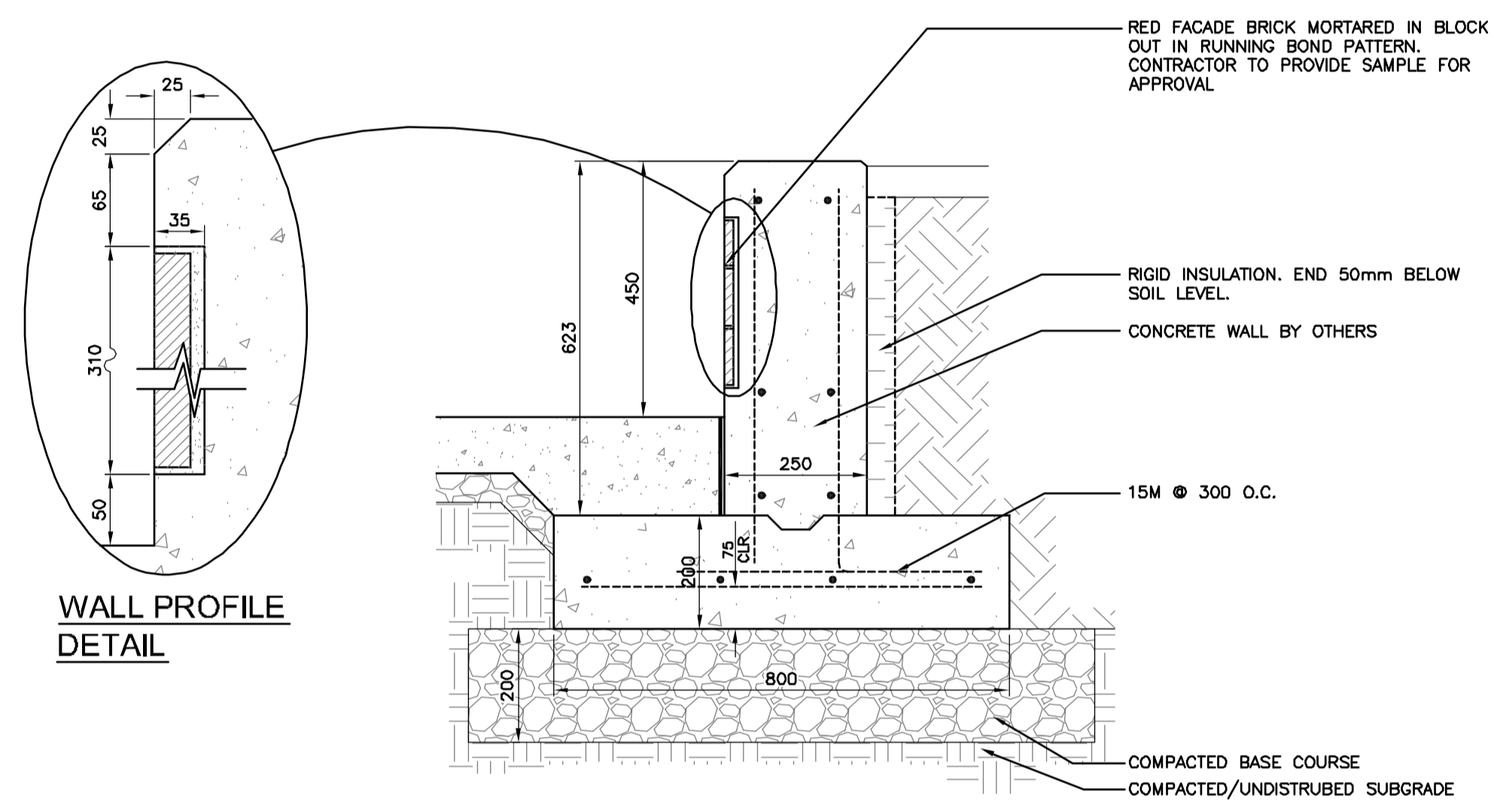


HARKNESS CONCRETE SHELTER WALL AT RAISED PLANTER SECTION 2
N.T.S.

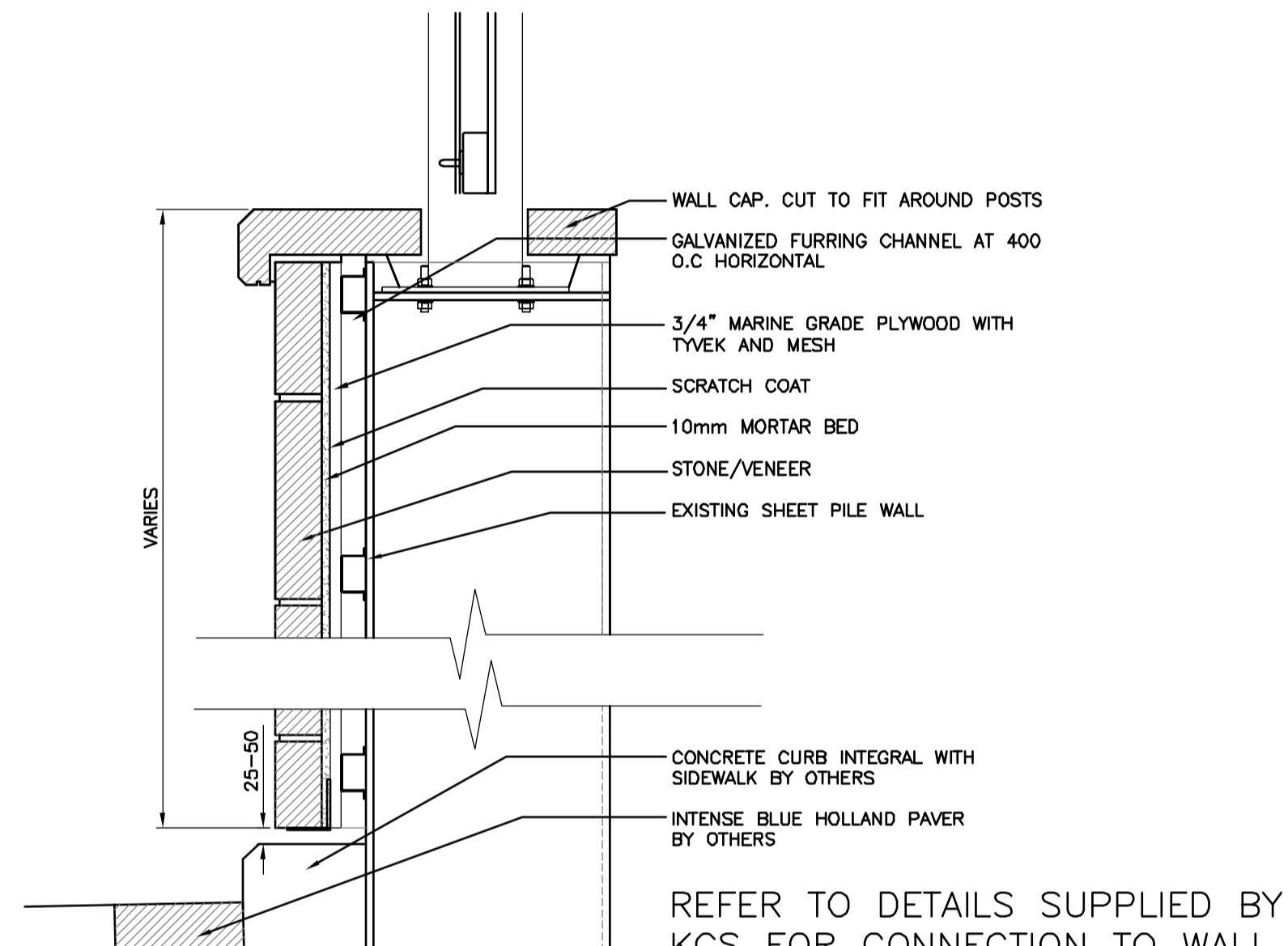


HARKNESS PLANTER WALL 3
N.T.S.

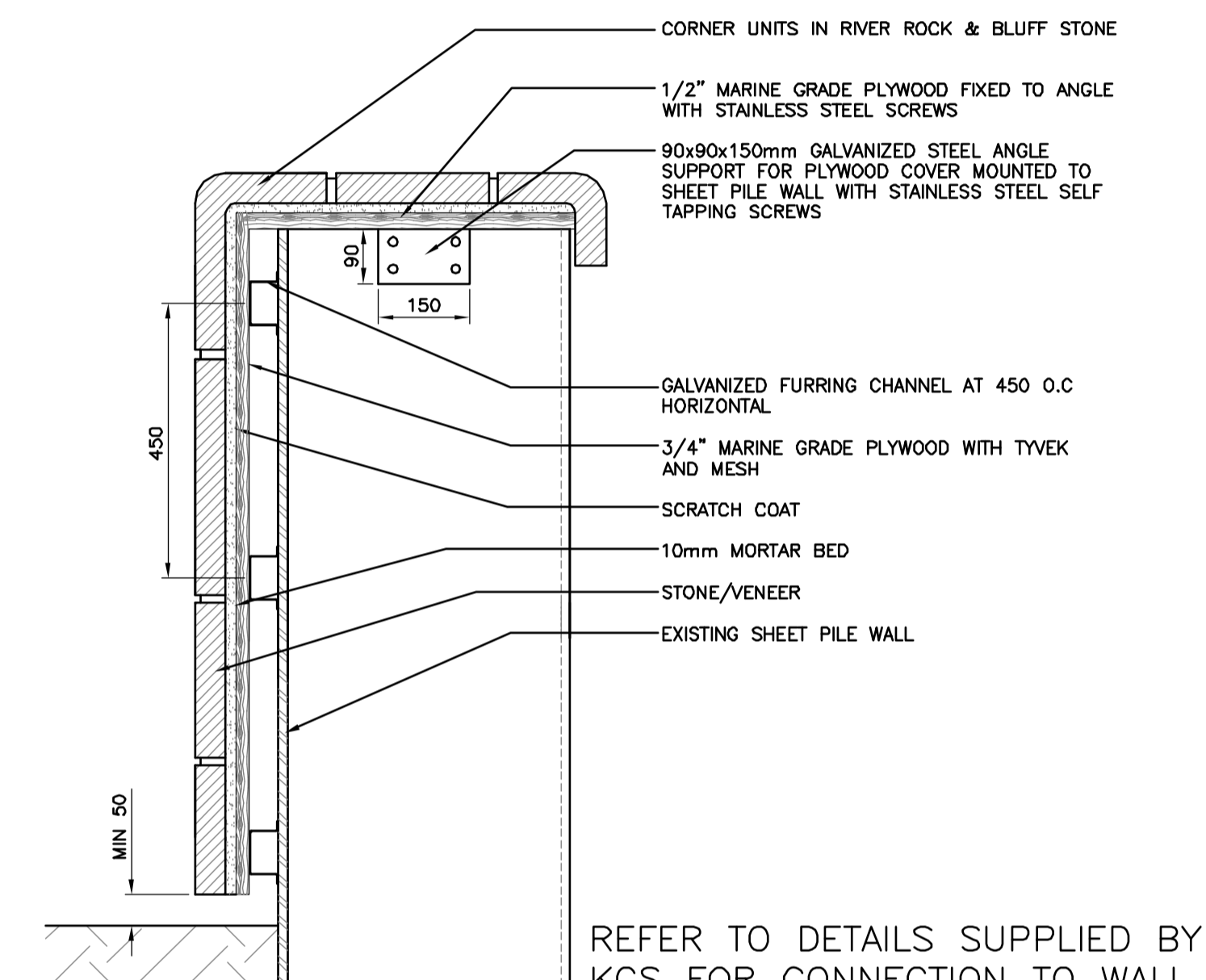
NOTES FOR ALL WALLS & COLUMNS:
 1. CONTRACTOR TO APPLY ANTI-GRAFFITI COATING TO ALL EXPOSED CONCRETE SURFACES
 2. WALLS AND COLUMNS AT FORT ROUGE STATION TO HAVE BRICK VENEER AS PER SPECIFICATIONS
 3. WALLS AT HARKNESS STATION TO HAVE STONE VENEER AS PER SPECIFICATIONS
 4. COLUMNS AT HARKNESS STATION TO HAVE ALUMINUM CLADDING WITH PRECAST CONCRETE PANELS



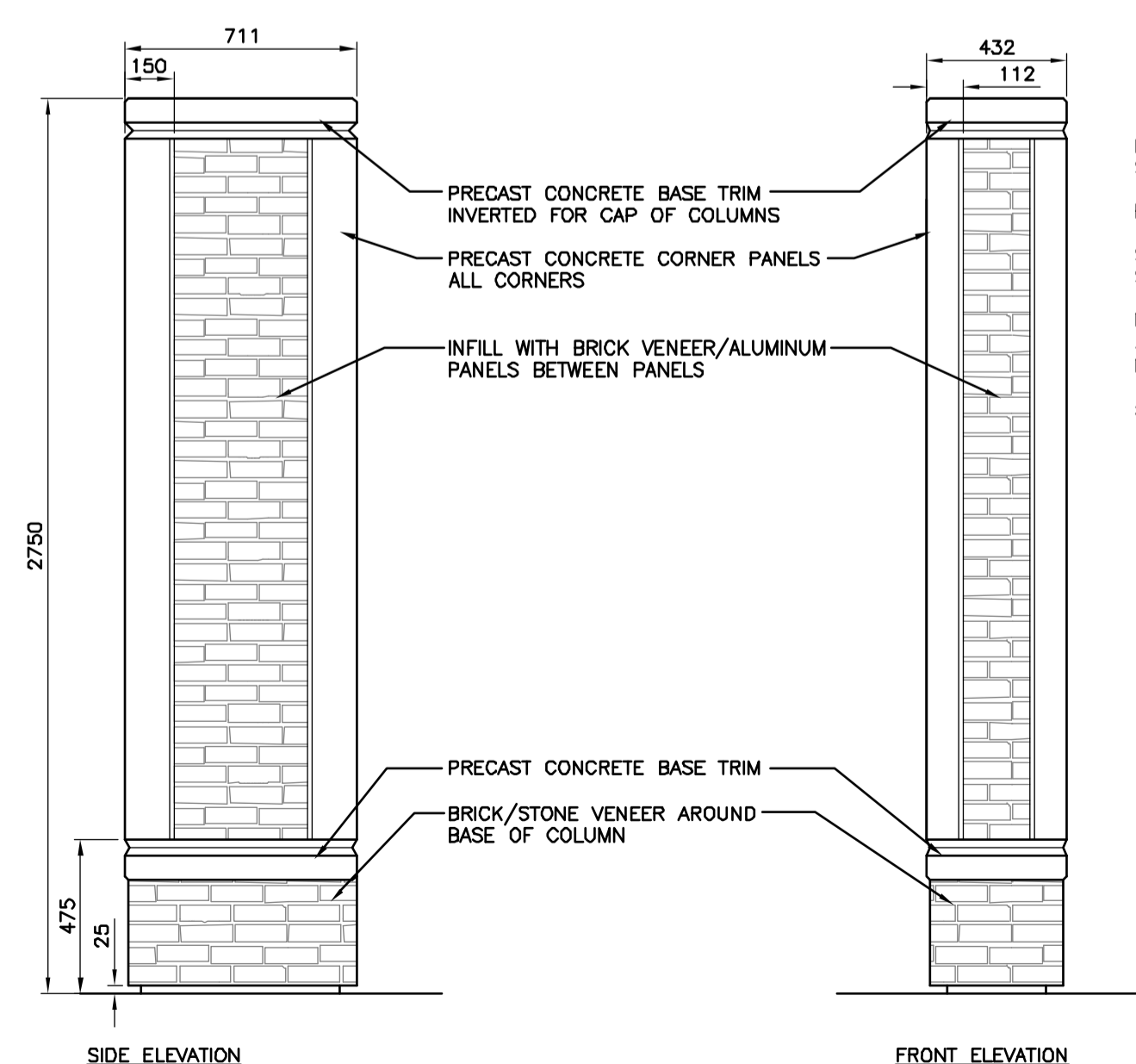
CONCRETE PLANTER WALL 4
N.T.S.



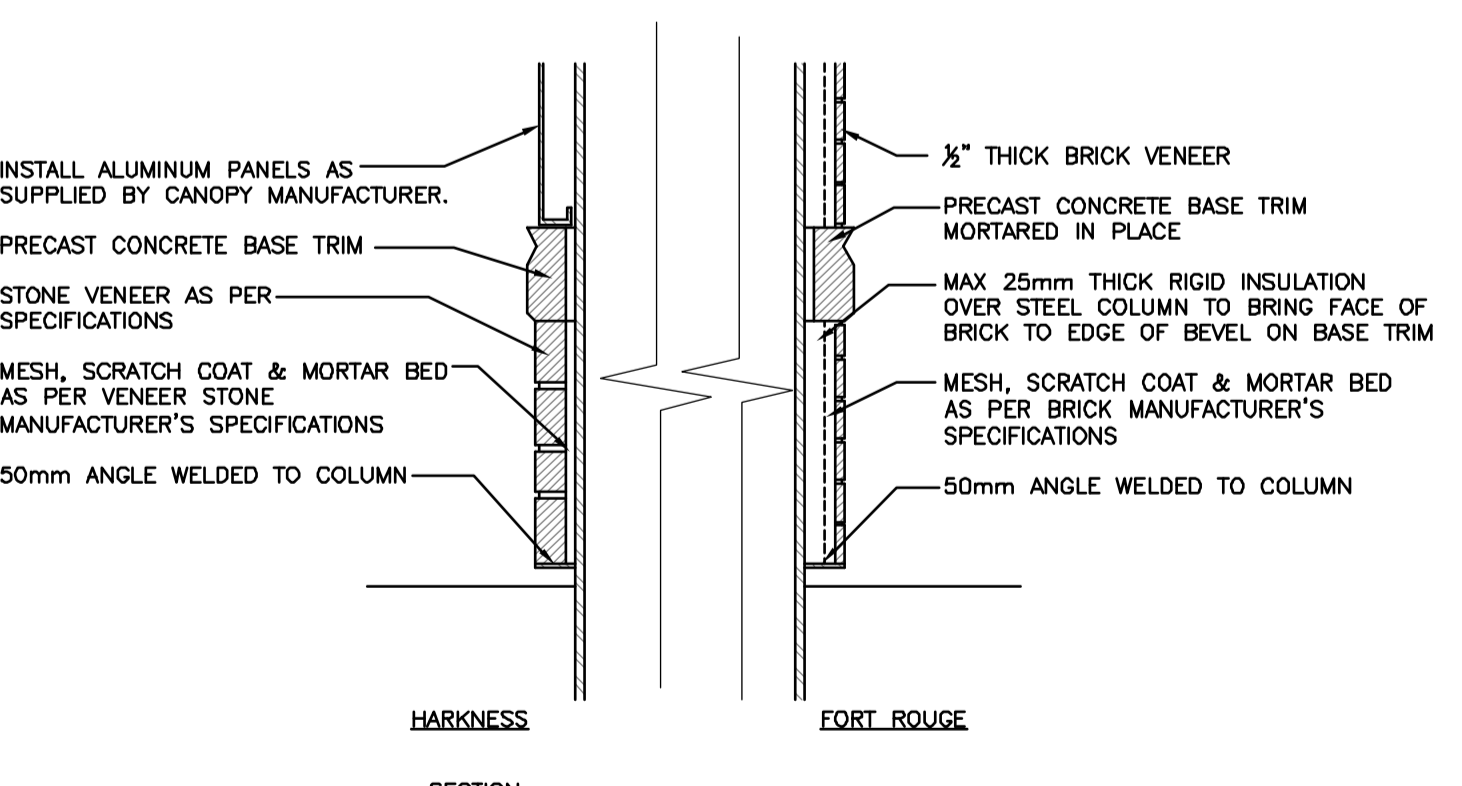
SHEET PILE WALL FACADE AT STATION 5
N.T.S.



SHEET PILE WALL FACADE 6
N.T.S.



CLADDING FOR CANOPY COLUMNS 7
N.T.S.



ALL DIMENSIONS PROVIDED FOR INFORMATION ON DESIGN INTENT.

REFER TO ELECTRICAL DRAWINGS FOR ALL WIRING CONNECTIONS TO ALL SIGNS, CANOPIES AND STRUCTURES.

CONTRACTOR TO SUPPLY SHOP DRAWINGS STAMPED BY A STRUCTURAL ENGINEER LICENSED TO PRACTICE IN THE PROVINCE OF MANITOBA. SHOP DRAWINGS TO INCLUDE WALL THICKNESSES, MATERIALS, ETC. AS LISTED IN THE SPECIFICATIONS

COORDINATION NOTES:
 - CONTRACTOR TO NOTE THAT OTHER WORKS UNDER SEPARATE CONTRACT WILL BE PERFORMED BEFORE, DURING AND FOLLOWING CONSTRUCTION UNDER THIS CONTRACT. WORK IS TO BE SCHEDULED TO ENSURE OTHER CONTRACTS IS NOT IMPEDED IN COMPLETION OF THEIR WORKS. SPECIFIC ITEMS OF COORDINATION INCLUDE, BUT ARE NOT LIMITED TO:
 CONTRACT 6 CONTRACTOR TO CONSTRUCT PLATFORM PAVING INCLUDING UNIT PAVERS AND DETECTABLE PAVERS.
 CONTRACT 6 CONTRACTOR TO CONSTRUCT PLANTING BEDS AND SUPPLY AND INSTALL PLANTING
 CONTRACT 3 CONTRACTOR TO COMPLETE PLANTING AND ROCK INSTALLATION ADJACENT TO HARKNESS STATION
 CONTRACT 5 CONTRACTOR TO CONSTRUCT PLANTER WALL, AND PLAZA PAVING AT OSBORNE STATION
 - DATES FOR COMPLETION OF OTHER CONTRACTS AND CRITICAL DATES ARE TO BE COORDINATED WITH RESPECTIVE CONTRACTORS PRIOR TO START OF CONSTRUCTION.

LOCATION UNDERGROUND SUPV. U/G STRUCTURES COMMITTEE DATE NOTE: LOCATION OF UNDERGROUND STRUCTURES AS SHOWN ARE BASED ON THE BEST INFORMATION AVAILABLE BUT NO GUARANTEE IS GIVEN THAT ALL EXISTING UTILITIES ARE SHOWN OR THAT THE GIVEN LOCATIONS ARE EXACT. CONFIRMATION OF EXISTENCE AND EXACT LOCATION OF ALL SERVICES MUST BE OBTAINED FROM THE INDIVIDUAL UTILITIES BEFORE PROCEEDING WITH CONSTRUCTION.	APPROVED STRUCTURES DATE DATE BY	B.M. ELEV. B.M. ELEV. 1 ISSUED FOR TENDER 20/04/11 JW NO. REVISIONS DATE BY	DESIGNED BY SR/JW DRAWN BY JW/MH CHECKED BY JW/SR APPROVED BY HOR. SCALE AS NOTED VERTICAL DATE 2011-04-20	 RELEASED FOR CONSTRUCTION ORIGINAL SIGNED BY RANDY FINGAS DATE: APRIL 20, 2011	LANDSCAPE ARCHITECT'S SEAL JACQUELINE L. WILKIE member no. 75 APRIL 20, 2011 CONSULTANT PROJECT NO. 08-028	 THE CITY OF WINNIPEG TRANSIT DEPARTMENT SOUTHWEST RAPID TRANSIT CORRIDOR - STAGE 1 STATION CONSTRUCTION, WARSAW RECONSTRUCTION, & ASSOCIATED WORKS CITY DRAWING NUMBER P-3325-22 SHEET 22 OF 28 CONSULTANT DRAWING NUMBER C7-L-5011-T DETAILS (1 of 3)
--	--	--	--	---	---	--

X:\08-028_Southwestern_BRT_Corridor.dwg\2010\Contract 7\VENUE_SET\Landscape_Details_2011-04-08.dwg