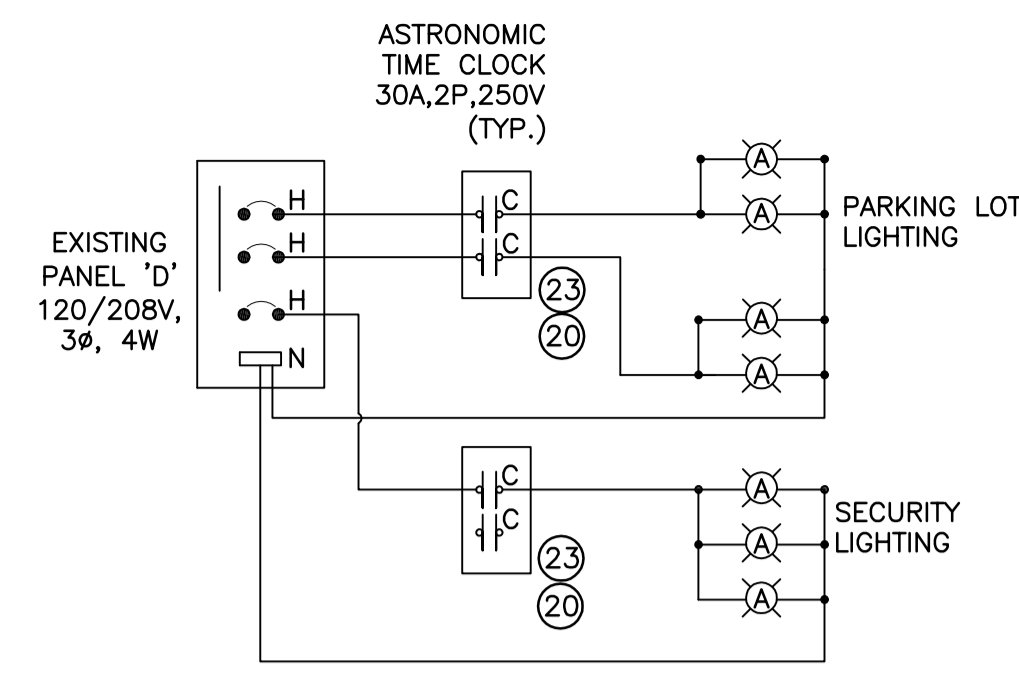
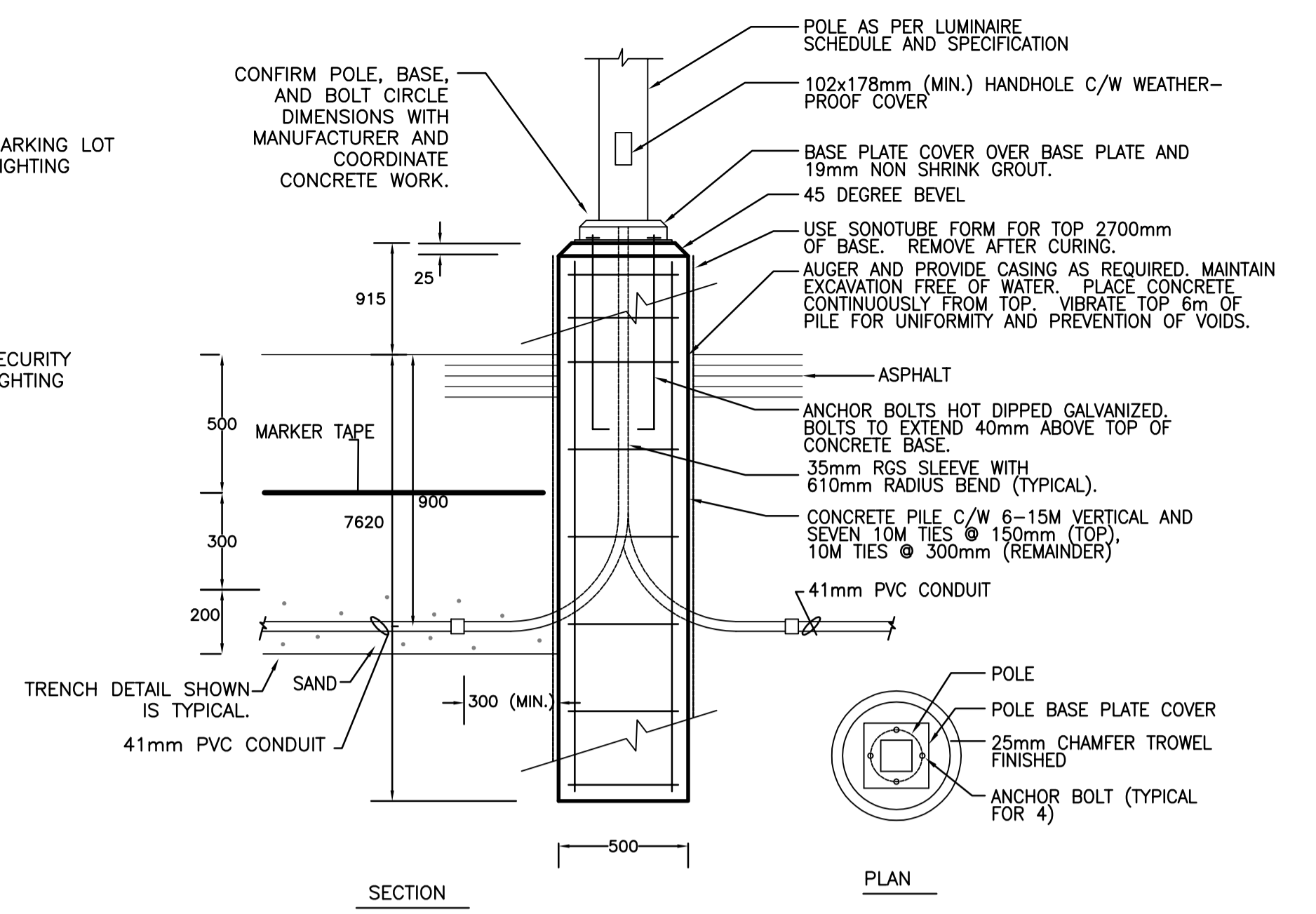


1 ELECTRICAL SITE PLAN  
NTS



2 SCHEMATIC  
NTS



3 LUMINAIRE POLE BASE DETAIL  
NTS

- NOTES:
- PROVIDE LUMINAIRES, POLES, FOUNDATIONS, MOUNTING HARDWARE, CONDUIT, WIRE, CABLE, BOXES, CIRCUIT BREAKERS, CONTACTORS, CONTROLLERS, TRENCHING, SAND, BACKFILL, MARKING TAPE, SURFACE RESTORATION, AND ALL OTHER WORKS REQUIRED TO PROVIDE COMPLETE AND FUNCTIONAL LIGHTING AND SYSTEMS.
  - PROVIDE THREE 30A/1P CIRCUIT BREAKERS ON EXISTING ELECTRIC PANEL D IN JANITOR ROOM.
  - FIRESTOP ALL PENETRATIONS THROUGH INTERIOR BASEMENT WALLS AND OTHER SURFACES AS SPECIFIED. SEAL PENETRATIONS THROUGH BASEMENT WALL, HALLWAY AND JANITOR ROOM.
  - THE BUILDING SHALL MAINTAIN NORMAL OPERATING HOURS DURING THE COURSE OF THE WORK. WORK MAY GENERALLY BE CARRIED OUT DURING REGULAR HOURS. CARRY OUT WORK SUCH THAT NO FACILITY USERS OR PERSONNEL WILL BE SUBJECTED TO UNREASONABLE OR PROLONGED MESS, NOISE, OR LOSS OF USE OF SYSTEMS. DO NOT LEAVE ANY WORK IN AN UNSAFE STATE.
  - MAKE A DETAILED RECORD OF BURIED CONDUIT AND CABLE ROUTES, BURIAL DEPTHS, AND OTHER DETAILS ON RECORD DRAWINGS AT THE TIME OF INSTALLATION OF ANY CONDUIT OR CABLE. (TYP.).
  - SEAL PENETRATIONS ON BOTH SIDES OF WALLS. SEAL SHALL BE WATER TIGHT.
  - PROVIDE TWO SPARE 400W METAL HALIDE LAMPS IN ORIGINAL PACKAGING.
  - PROVIDE NEW PARKING PLUGS. MATCH EXISTING J.R. STEPHENSON IN NEMA 3 ENCLOSURE. WIRE AND RECONNECT TO ORIGINAL CIRCUIT. PROVIDE ONE CIRCUIT PER STALL.
  - PROVIDE NEW WIRING BOX. PRESERVE EXISTING CIRCUITS DURING CONSTRUCTION. EXISTING BOX TO BE REMOVED DURING DEMOLITION. WIRE AND CONNECT NEW PARKING PLUG CIRCUITS.
  - THE HALLWAY AND JANITOR ROOM ARE FINISHED LOCATIONS WHERE PORTIONS OF THE WORK SHALL REMAIN EXPOSED AND VISIBLE. PAINT CONDUIT AND HARDWARE PRIOR TO INSTALLATION TO MATCH SURFACES. PREP GALVANIZED MATERIALS, THEN EPOXY PRIME, AND PAINT WITH ENAMEL. INSTALL CONDUIT IN A FASHION MIMICKING THE EXISTING CONDUIT RUNS FOR A CONSISTENT, CLEAN, AND NEAT APPEARANCE.
  - 5 INCHES SQUARE HEAVY DUTY, 35 FOOT POLE BY VALMONT WEST COAST ENGINEERING MODEL 5SH-35-0.1 OR ACCEPTED EQUIVALENT.
  - 5 INCHES SQUARE HEAVY DUTY, 35 FOOT POLE BY VALMONT WEST COAST ENGINEERING MODEL 5SH-35-0.2 OR ACCEPTED EQUIVALENT.
  - EXISTING PARKING PLUGS TO REMAIN.
  - PRESERVE WIRING DURING CONSTRUCTION.
  - EXISTING UNDERGROUND WIRE TO REMAIN FOR RECEPTACLES, SIGNAGE, AND LOADS THAT ARE TO REMAIN.
  - REMOVE EXISTING PARKING LOT LIGHTING.
  - UPDATE PANEL SCHEDULE IN PANEL D.
  - NOTIFY CONTRACT ADMINISTRATOR A MINIMUM FOUR DAYS PRIOR TO COVERING ANY UNDERGROUND OR CONCEALED WORKS.
  - INSTRUCT FACILITY STAFF ON USE OF TIME CLOCKS. LOCATE NEW TIME CLOCKS NEAR EXISTING TIME CLOCK. LABEL 'PARKING LOT LIGHTING' AND 'PARKING LOT SECURITY LIGHTING'.
  - STANDARD OF ACCEPTANCE: INTERMATIC ET800 SERIES. ACCEPTABLE MANUFACTURERS: INTERMATIC OR TORK.
  - TERMINATE CONDUIT IN NEAREST ACCESSIBLE SPACE ONCE INSIDE THE BUILDING.
  - EXISTING CONCRETE RAMP TO REMAIN. ALLOW FOR PUSH FROM THE BASEMENT WALL FOR CONDUITS. CONTRACTOR TO DETERMINE SUITABLE LOCATION OF POINT OF ENTRY ON SITE.
  - TIME CLOCK WIRING TERMINAL ARE SIZED FOR #10 AWG WIRE. USE SPLIT BOLT CONNECTORS FOR TRANSITION FROM #6 TO #10 AND PROVIDE SELF-FUSING SILICONE TAPE INSULATION. TRANSITION SHALL BE TERMINATED IN BOX.

LUMINAIRE SCHEDULE

| TYPE | DESCRIPTION   | LAMP         | VOLTAGE | MANUFACTURER  |
|------|---|--------------|---------|---|
| ⊙    | AVL SERIES 400W MH TYPE 4 SHORT FULL CUTOFF, CLEAR ED-28 METAL HALIDE, HORIZONTAL POSITION. | 400W MH P.S. | 120V    | AMERICAN ELECTRIC LIGHTING CATALOG NUMBER AVL 40M R4 FG S9. |

REFER DRAWING C01 FOR GENERAL CONSTRUCTION NOTES

METRIC  
WHOLE NUMBERS INDICATE MILLIMETRES  
DECIMALIZED NUMBERS INDICATE METRES



| 150 mm WM  | WATERMAIN           | 150 mm WM  | ---      | GAS                | ---       | ---      | ---               | ---      |
|------------|---------------------|------------|----------|--------------------|-----------|----------|-------------------|----------|
| ⊙          | HYDRANT             | ●          | ---      | HYDRO              | ---       | ---      | ---               | ---      |
| ⊗          | VALVE               | ⊙          | ---      | M.T.S.             | ---       | ---      | ---               | ---      |
| 300 mm LDS | LAND DRAINAGE SEWER | 300 mm LDS | ⊠        | PEDESTAL           | ---       | ---      | ---               | ---      |
| 250 mm CS  | WASTE WATER SEWER   | 250 mm CS  | ⊠        | GROUND ELEVATION   | 230.00    | ---      | ---               | ---      |
| ○          | MANHOLE             | ●          | ⊠        | PAVEMENT ELEVATION | (230.000) | ---      | ---               | ---      |
| □          | CATCH BASIN         | ■          | ---      | PROPERTY LINE      | ---       | ---      | ---               | ---      |
| △          | CURB INLET          | ▲          | ⊠        | SURVEY BAR         | ---       | ---      | ---               | ---      |
| +          | SIGN                | +          | ⊠        | CURB STOP          | ---       | ---      | ---               | ---      |
| ○          | LAMP STANDARD       | ●          | ⊠        | TESTHOLE           | ---       | ---      | ---               | ---      |
| •          | UTILITY POLE        | •          | ---      | ---                | ---       | ---      | ---               | ---      |
| EXISTING   | LEGEND -- PLAN      | PROPOSED   | EXISTING | LEGEND -- PLAN     | PROPOSED  | EXISTING | LEGEND -- PROFILE | PROPOSED |

LOCATION APPROVED UNDERGROUND STRUCTURES  
SUPV. U/G STRUCTURES COMMITTEE DATE

NOTE:  
LOCATION OF UNDERGROUND STRUCTURES AS SHOWN ARE BASED ON THE BEST INFORMATION AVAILABLE BUT NO GUARANTEE IS GIVEN THAT ALL EXISTING UTILITIES ARE SHOWN OR THAT THE GIVEN LOCATIONS ARE EXACT. CONFIRMATION OF EXISTING AND EXACT LOCATION OF ALL SERVICES MUST BE OBTAINED FROM THE INDIVIDUAL UTILITIES BEFORE PROCEEDING WITH CONSTRUCTION.

C.W.B.M. 11-004..... 232.035m  
N.E. CORNER OF CONCORDIA AVE. & LONDON ST.,  
TBLT. IN S. CONC. FOUNDATION, 1m E. AND 0.2m  
BELOW TYNDALL STONE FROM THE S.W. CORNER OF  
THE MOST SLY. WALL OF KILDONAN EAST REGIONAL  
SCHOOL, NO. 845 CONCORDIA AVE.

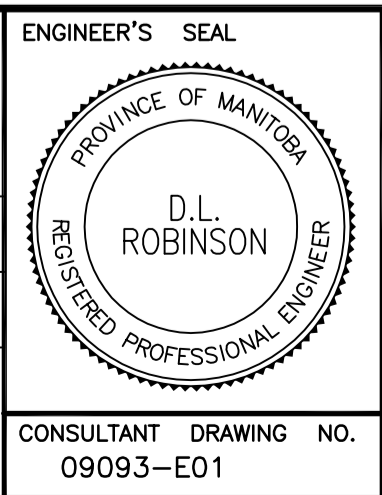
**GENIVAR**  
10 PRAIRIE WAY WINNIPEG, MANITOBA R2J 3J8  
PH: (204)-477-6650 FAX: (204)-474-2864

DESIGNED BY D.G. CHECKED BY D.R.  
DRAWN BY D.G. APPROVED BY D.R.

HOR. SCALE: NTS  
VERT. SCALE: NTS

ISSUED FOR REVIEW 11/03/28 R.C.  
NO. REVISIONS DATE BY

DATE: MARCH 2011



**THE CITY OF WINNIPEG**  
PLANNING, PROPERTY & DEVELOPMENT

ELMWOOD/KILDONAN POOL  
PARKING LOT RECONSTRUCTION PROJECT

CITY DRAWING NO. 151-2011-E01  
SHEET 5 OF 5  
REV. 5 0

CONSULTANT DRAWING NO. 09093-E01