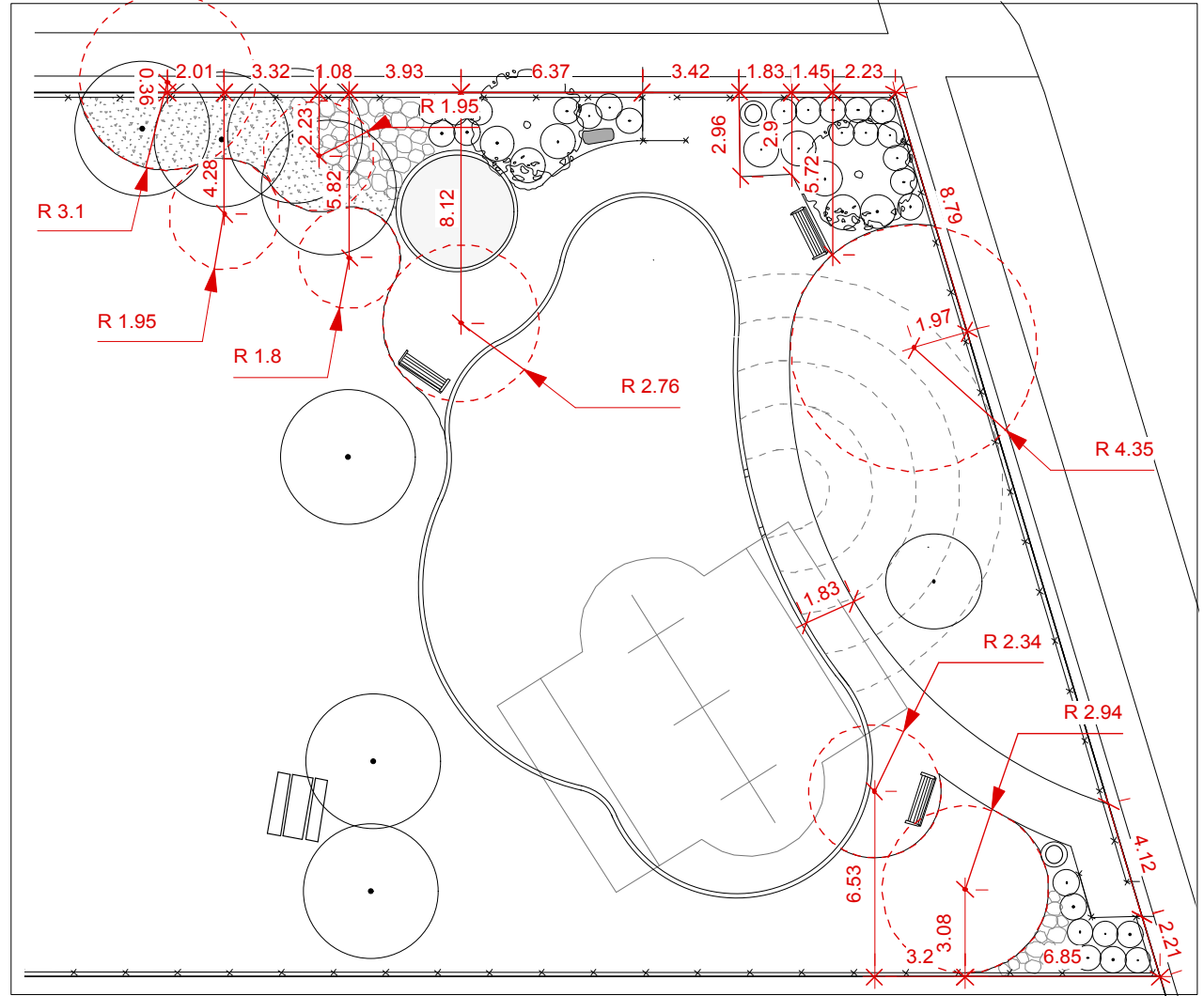


Concrete Curb Play Area Edging Layout

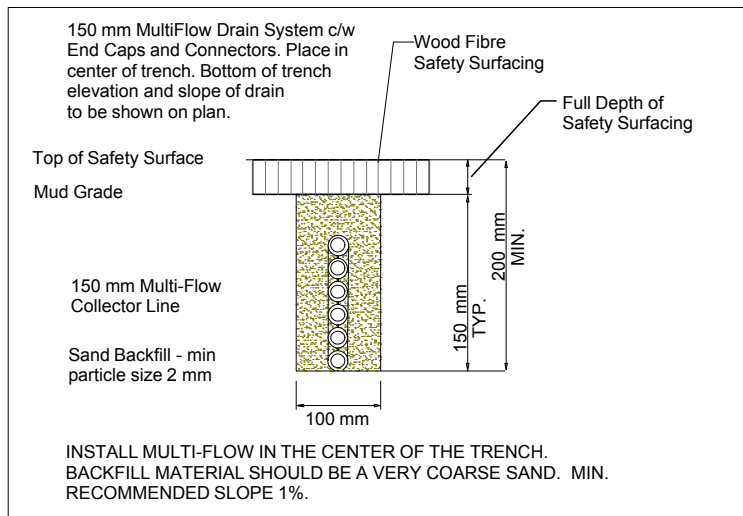
Scale: 1:250

**measurements based on outside edge of concrete play edging



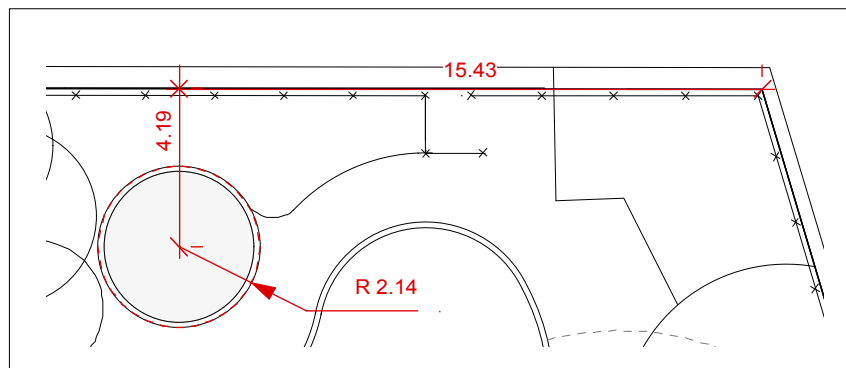
Pathways and Planting Beds Layout

Scale: 1:250



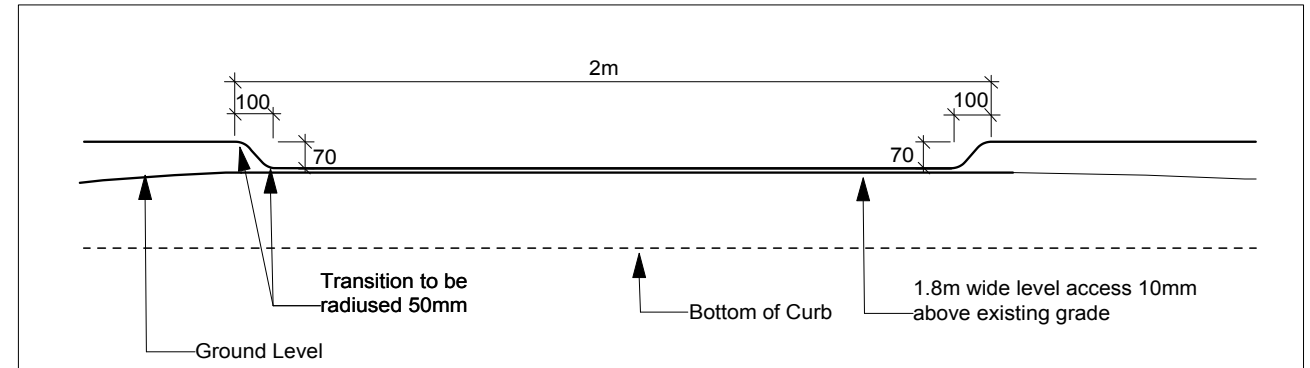
Multi-Flow Detail

Scale: 1:15



Concrete Curbing for Sand Play Area Layout

Scale: 1:200



Concrete Curb-Access Point

Scale: 1:20

CONTRACTOR TO CONFIRM ALL DIMENSIONS AND REPORT ANY DISCREPANCIES TO CONTRACT ADMINISTRATOR PRIOR TO CONSTRUCTION. LOCATION OF UNDERGROUND STRUCTURES AS SHOWN ARE BASED ON THE BEST INFORMATION AVAILABLE BUT NO GUARANTEE IS GIVEN THAT ALL EXISTING UTILITIES ARE SHOWN OR THAT THE GIVEN LOCATIONS ARE EXACT. CONFIRMATION OF EXISTENCE AND EXACT LOCATION OF ALL SERVICES MUST BE OBTAINED FROM THE INDIVIDUAL UTILITIES BEFORE PROCEEDING WITH CONSTRUCTION.



THE CITY OF WINNIPEG
 Planning, Property and Development Department
 Planning and Land Use Division
 Unit 15 - 30 Fort Street, Winnipeg, MB, (R3C 4X5)

| | | | |
|--------------|--------------|-------------|--|
| DESIGNED BY | IL | CHECKED BY | |
| DRAWN BY | IL | APPROVED BY | |
| HORIZ. SCALE | As Indicated | | |
| VERT. SCALE | As Indicated | | |
| DATE | APRIL 2011 | | |

| | |
|--|------|
| MANAGER, PARK AND OPEN SPACES | DATE |
| MANAGER, PLANNING AND LAND USE DIVISION | DATE |

| | |
|--|---------------------|
| DRAWING TITLE | DRAWING NO. |
| Ronald Lodge Park PLAYGROUND RENEWAL LAYOUT PLANS | R.29-D |
| SITE ADDRESS | BID OPPORTUNITY NO. |
| 260 Ronald Street | 154-2011 |