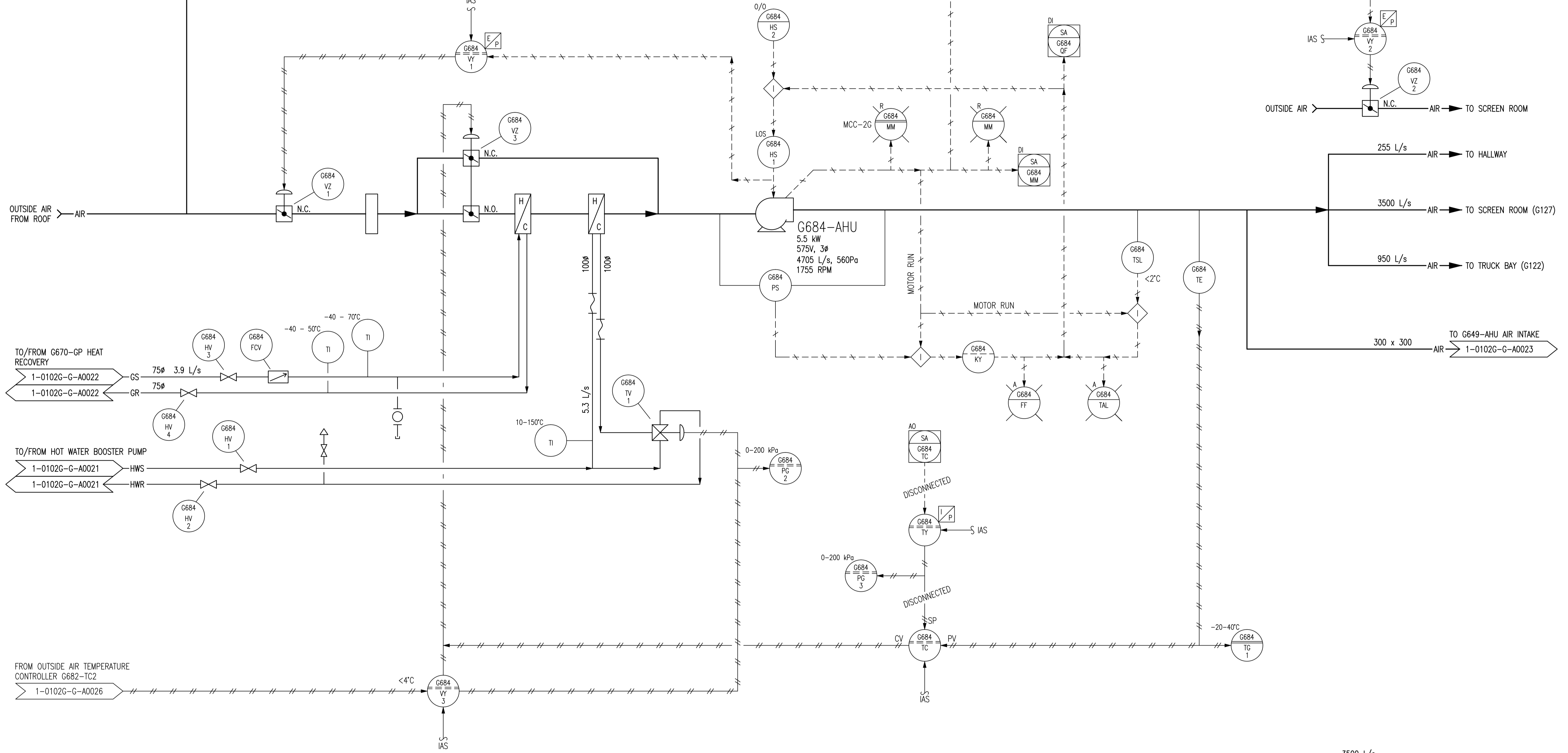


G501-AA, G503-AA, OR
G504-AA ALARM
1-0102G-G-A0071



NOTES:

1. THIS DRAWING SUPERSEDES PART OF DRAWING SEP-867.
2. ALL INSTRUMENTS SHOWN IN AN AUXILIARY LOCATION ARE LOCATED IN HVAC CONTROL PANEL GCP-8 UNLESS OTHERWISE DESIGNATED.

LAST SAVE: 2011/03/29 - 2:24pm
PATH: M:\112577\0106\4ENG\488&C\DD - General DWG\1-0102G-A0028-001-01.dwg

1-0102A-D-A0001	PROCESS & INSTRUMENT DIAGRAMS LEGEND & DETAILS
DRAWING NUMBER	REFERENCE DRAWINGS

NO.	REVISIONS	DATE	DESIGN	CHECK
01	MODIFIED GAS ALARM SIGNAL	2011/03/11	TMC	CJR
00	ISSUED FOR CITY USE	2006/11/08	EFB	CJR

SNC-LAVALIN INC.
148 Nature Park Way
Winnipeg, MB, Canada R3P 0X7
204-786-8080

DESIGNED BY: EXISTING
DRAWN BY: DAH/EFB
SCALE: NTS

CHECKED BY: EFB
APPROVED BY: CJR
RELEASED FOR CONSTRUCTION BY: N. HARRINGTON
DATE: 2005/11/08
DATE: 2011/03/11

CONSULTANT NO.: 112577-0106-49DD-0002

ENGINEER'S SEAL

ORIGINAL DRAWING SEALED BY:
T. M. CHURCH
SNC-LAVALIN
MEMBER #32682
2011/03/25
REV. 01
CHANGES ONLY

THE CITY OF WINNIPEG
WATER AND WASTE DEPARTMENT

SOUTH END WATER POLLUTION CONTROL CENTRE
PUMP & SCREEN BUILDING
PROCESS & INSTRUMENTATION DIAGRAM
SCREEN ROOM VENTILATION UNIT
G684-AHU

CITY DRAWING NUMBER: 1-0102G-A0028
SHEET: 001
REV.: 01
SIZE: A1