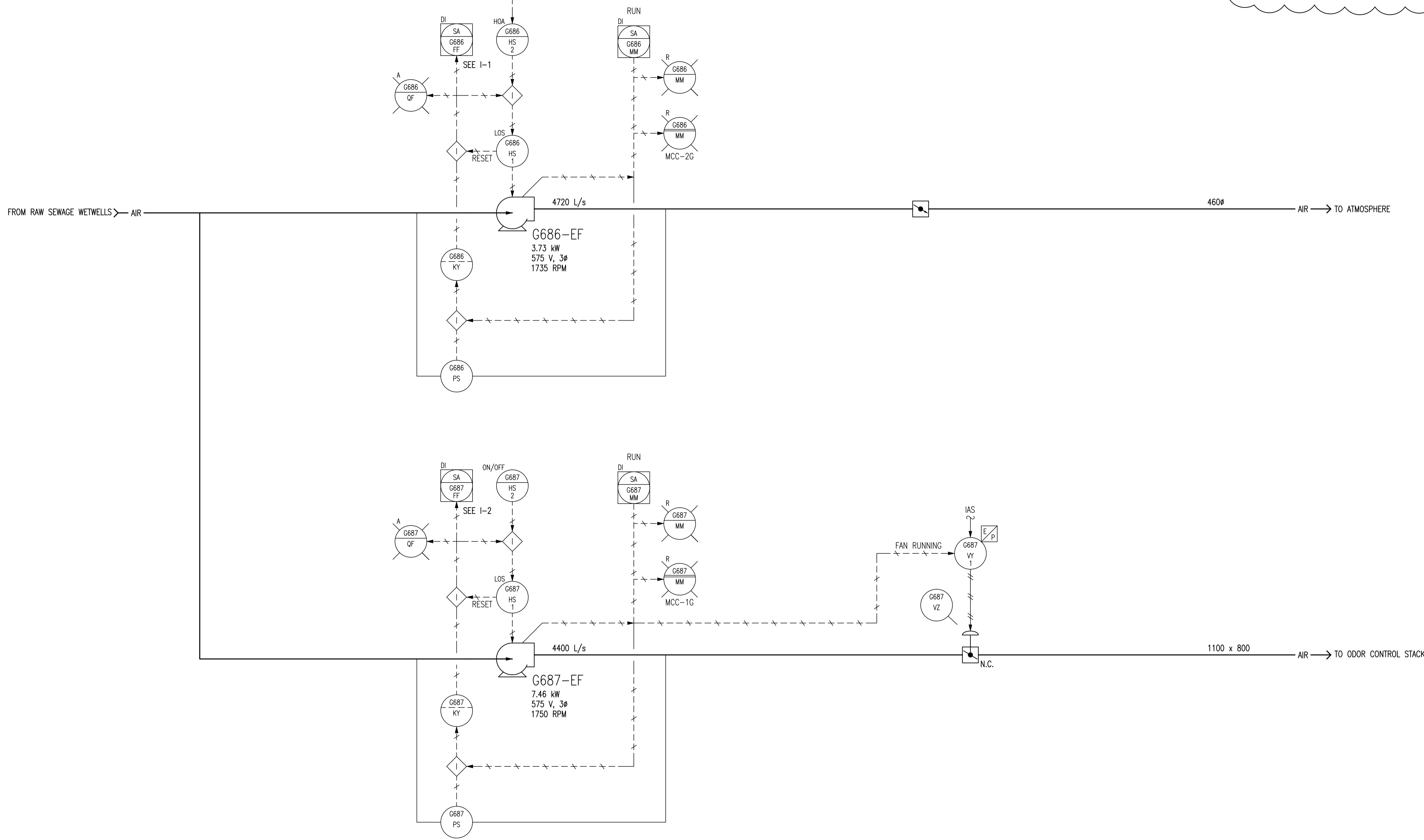


G501-AA, G503-AA, OR
G504-AA ALARM
1-0102G-G-A0071

WET WELL, SCREEN ROOM OR GRIT TANK ROOM GAS ALARM

INCONSISTENCIES
I-1 EXHAUST FAN FLOW FAIL SIGNAL TO DCS G686-FF IS SHOWN AS G686-QF IN SOME EXISTING DOCUMENTATION.
I-2 EXHAUST FAN FLOW FAIL SIGNAL TO DCS G687-FF IS SHOWN AS G687-QF IN SOME EXISTING DOCUMENTATION.



NOTES:

- G687-VY1 AND G687-PS ARE LOCATED NEAR THE CEILING ABOVE THE DISCHARGE PIPING FROM G687-EF87.

LAST SAVE: 2011/03/29 - 2:26pm
PATH: M:\112577\0106\4ENG\488&C\DD - General DWG\1-0102G-A0029-001-01.dwg

1-0102A-D-A0001	PROCESS & INSTRUMENT DIAGRAMS LEGEND & DETAILS
DRAWING NUMBER	REFERENCE DRAWINGS

<p>SNC-LAVALIN INC. 148 Nature Park Way Winnipeg, MB, Canada R3P 0X7 204-786-8080</p>				<p>ENGINEER'S SEAL</p>	
DESIGNED BY: EXISTING	CHECKED BY: EFB	<p>ORIGINAL DRAWING SEALED BY: T. M. CHURCH SNC-LAVALIN MEMBER #32682 2011/03/25 REV. 01 CHANGES ONLY</p>			
DRAWN BY: EFB	APPROVED BY: CJR				
SCALE: NTS	RELEASED FOR CONSTRUCTION BY: N. HARRINGTON DATE: 2011/03/11				
DATE: 2005/11/09	DATE: 2011/03/11	<p>CITY DRAWING NUMBER 1-0102G-A0029</p>			
CONSULTANT NO.: 112577-0106-49DD-0003	<p>SHEET REV. SIZE 001 01 A1</p>				
NO. REVISIONS	DATE	DESIGN	CHECK	<p>112577-0106-49DD-0003</p>	