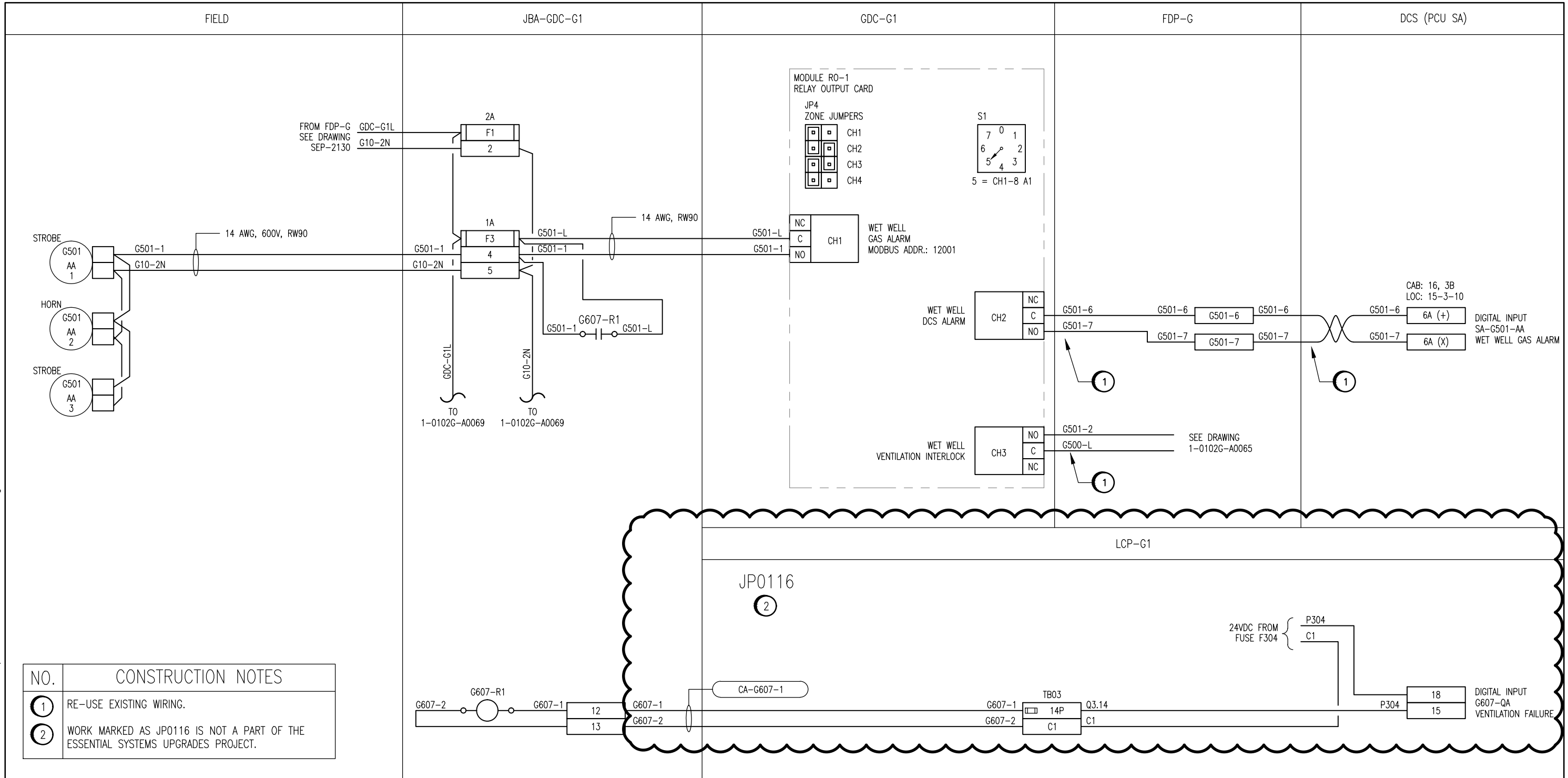


B SIZE - 279mm x 432mm

LAST SAVE: 2011/03/29 - 12:15pm
 PATH: M:\112577\0106\4ENG\481&C\DD - General DWG\1-0102G-A0058-001-00.dwg



NOTES:

- G501-R1 IS A WET WELL VENTILATION FAILURE ALARM. SEE DRAWING 1-0102G-A0051 FOR WIRING DETAILS.
- INSTALL IN ACCORDANCE WITH HAZARDOUS CLASS 1, ZONE 2 REQUIREMENTS.

APECM
 Certificate of Authorization
 SNC-Lavalin Inc.
 No. 4489

00	ISSUED FOR TENDER, BID OPP. 209-2011	2011/03/11	TMC	CJR
NO.	REVISIONS	DATE	DESIGN	CHECK

SNC-LAVALIN INC.
 148 Nature Park Way
 Winnipeg, MB, Canada R3P 0X7
 204-786-8080

DESIGNED BY: T. CHURCH
 CHECKED BY: C. REIMER

DRAWN BY: S. COATES
 APPROVED BY: C. REIMER

SCALE: N.T.S.
 DATE: 2009/10/23

RELEASED FOR CONSTRUCTION
 BY: N. HARRINGTON
 DATE: 2011/03/11

CONSULTANT NO.: 112577-0106-48DD-1214

ENGINEER'S SEAL

ORIGINAL DRAWING
 SEALED BY:
 T. M. CHURCH
 SNC-LAVALIN
 2011/03/25
 REV. 00

THE CITY OF WINNIPEG
 WATER AND WASTE DEPARTMENT

SOUTH END WATER POLLUTION CONTROL CENTRE
 ESSENTIAL SYSTEM UPGRADES
 INSTRUMENT LOOP DIAGRAM
 G501 WET WELL GAS ALARM & G607 VENT FAILURE

CITY DRAWING NUMBER	SHEET	REV.	SIZE
1-0102G-A0058	001	00	B