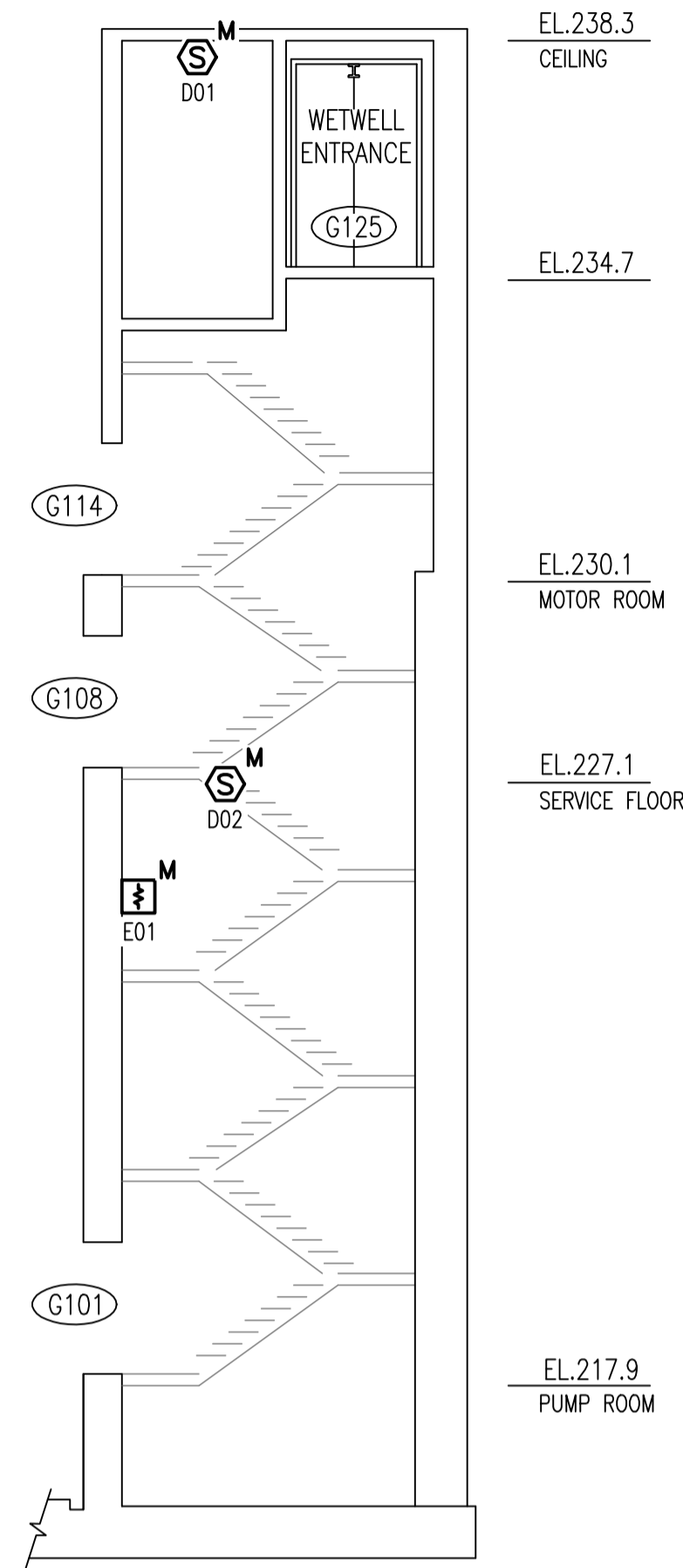
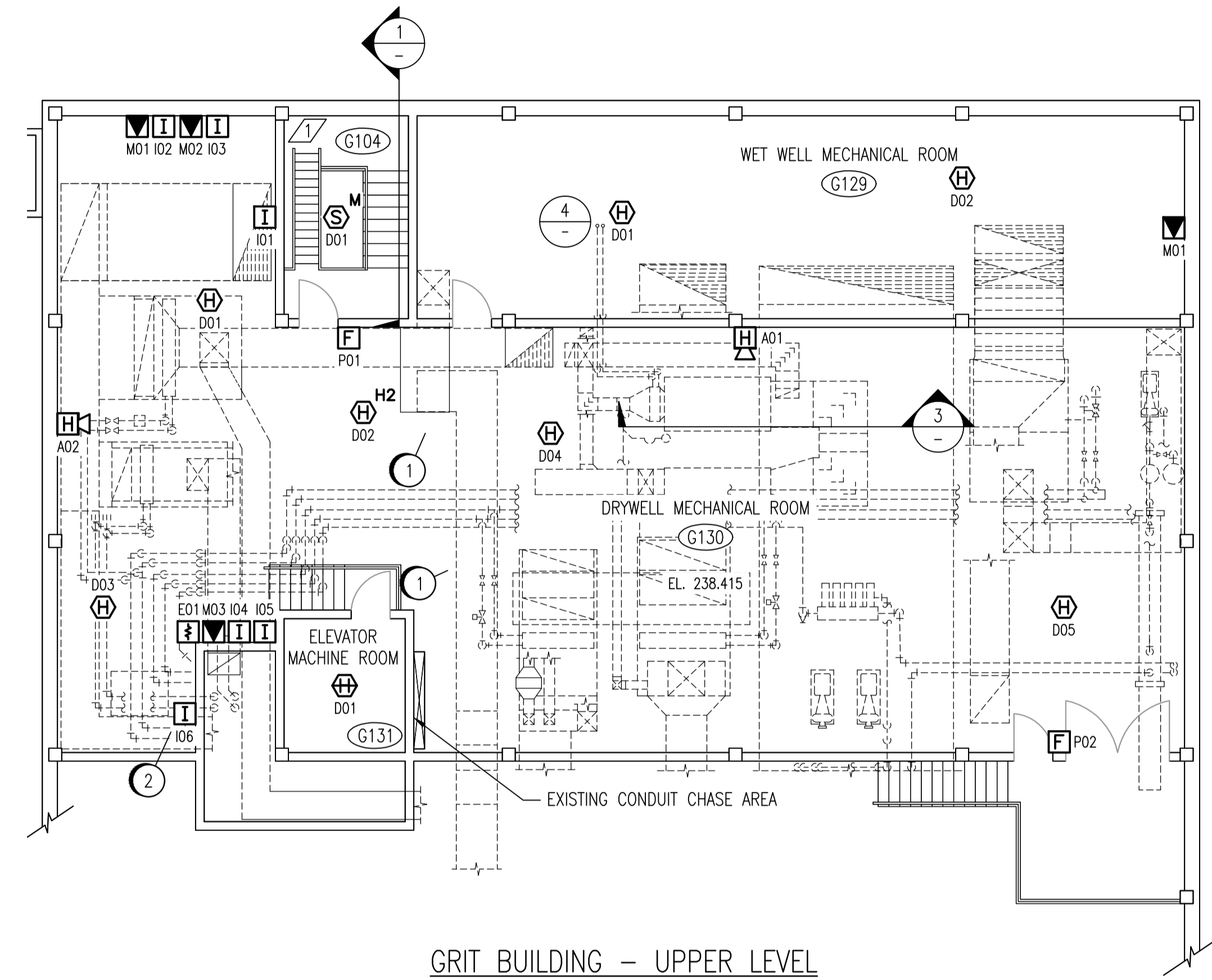
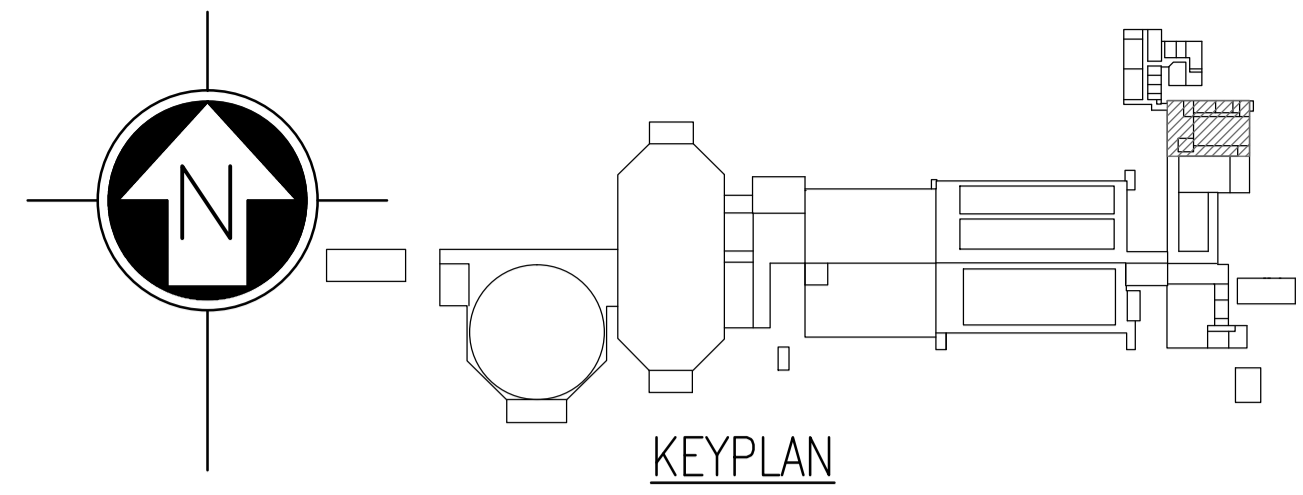


1 STAIRWELL G104
SCALE 1:100
E0001
E0002
E0003
E0004



2 STAIRWELL G105
SCALE 1:100
E0001
E0002
E0004

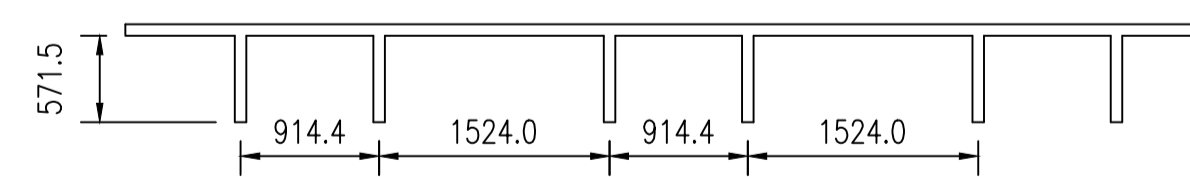


GRIT BUILDING - UPPER LEVEL
SCALE 1:100

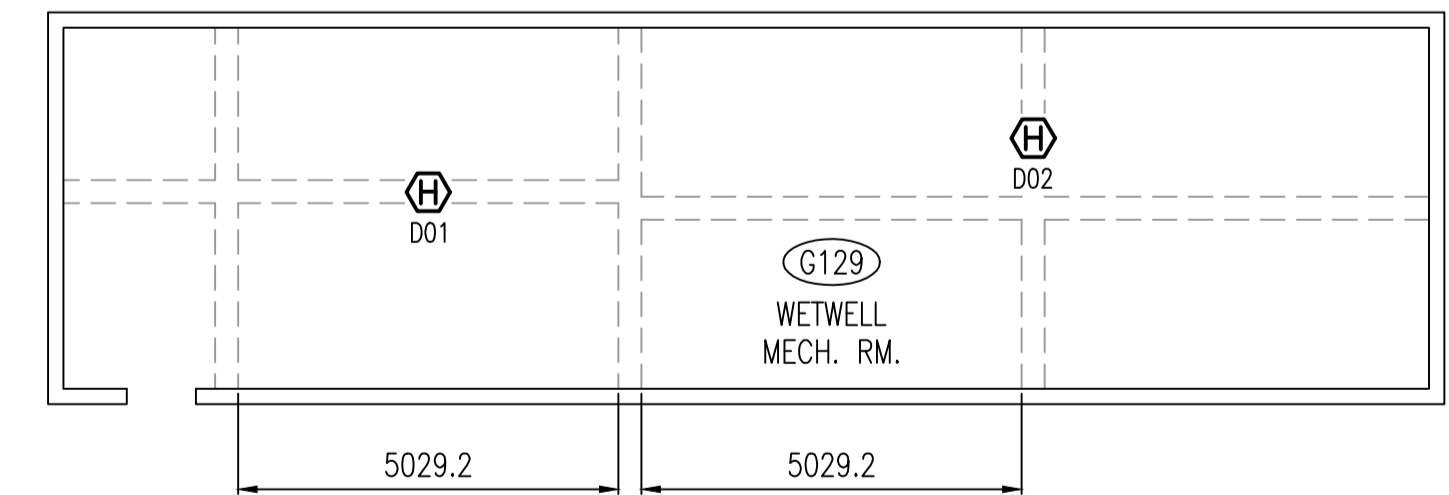
ROOM DETAILS			
ROOM ID	HEIGHT	CEILING TYPE	REF DWG
G104	26.11m	STAIRWELL	SEP-825
G105	22.22m	STAIRWELL	SEP-825
G129	4.07m	BEAMS; SEE DETAIL 5	SEP-817
G130	4.07m	BEAMS, GRID STYLE; SEE DETAIL 4	SEP-817

CONSTRUCTION NOTES	
1	FIRE ALARM DEVICES INSTALLED WITHIN 0.9m OF G686-EF AND G687-EF AND ASSOCIATED DUCTING SHALL BE RATED FOR USE IN HAZARDOUS CLASS 1, ZONE 2, GROUP IIA LOCATIONS. SEE ELECTRICAL CLASSIFICATION PLAN FOR MORE DETAILS.
2	INSTALL PENETRATION AS PER DETAILS 1 AND 2 OF 1-0102A-E0008.

DESIGN INTENT NOTES	
1	NFPA 72 5.7.3.2.4.2(5) - FOR ROOMS OF 84m ² AREA OR LESS, ONLY ONE SMOKE DETECTOR SHALL BE REQUIRED.

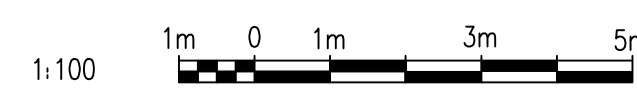


3 CEILING BEAM SECTION
SCALE 1:50



4 CEILING BEAM DETAIL
SCALE 1:100

NOTES:
1. DEVICE TAGS ARE SHOWN IN SHORTHAND NOTATION. FULL DEVICE TAG FORMAT IS FAS-Gxxx-yyy, WHERE xxx IS THE ROOM NUMBER, AND yyy IS THE DEVICE IDENTIFIER.



NO.	REVISIONS	DATE	DESIGN	CHECK
00	ISSUED FOR TENDER, BID OPP. 209-2011	2011/03/11	EFB	CJR

SNC-LAVALIN INC.
148 Nature Park Way
Winnipeg, MB, Canada R3P 0X7
204-786-8080

DESIGNED BY: E. BOHNCKE
CHECKED BY: C. REIMER
DRAWN BY: E. BOHNCKE
APPROVED BY: C. REIMER
SCALE: AS SHOWN
RELEASED FOR CONSTRUCTION BY: N. HARRINGTON
DATE: 2009/03/20
DATE: 2011/03/11

CONSULTANT NO.: 112577-0101-47DD-0023

ENGINEER'S SEAL
ORIGINAL DRAWING
SEALED BY:
C. J. REIMER
SNC-LAVALIN
MEMBER #21968
2011/03/25
REV. 00

THE CITY OF WINNIPEG
WATER AND WASTE DEPARTMENT

SOUTH END WATER POLLUTION CONTROL CENTRE
FIRE ALARM UPGRADE
PLAN LAYOUT
FIRE ALARM - GRIT BUILDING
UPPER LEVEL

CITY DRAWING NUMBER: 1-0102G-E0003
SHEET: 001
REV: 00
SIZE: A1

DRAWING NUMBER	REFERENCE DRAWINGS
1-0102G-E0012	ELECTRICAL CLASSIFICATION PLAN
1-0102G-E0016	ELECTRICAL CLASSIFICATION PLAN
1-0102A-E0001	FIRE ALARM LEGEND AND DETAILS