

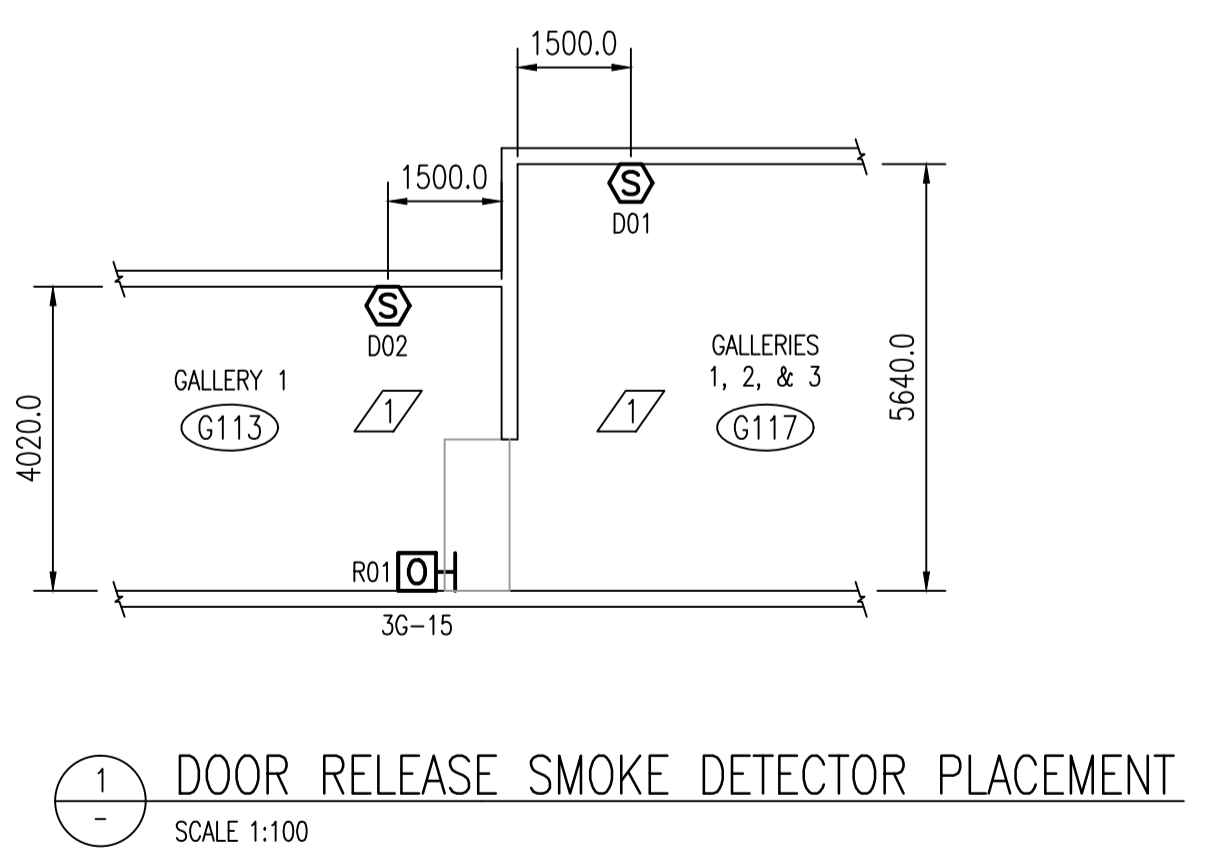
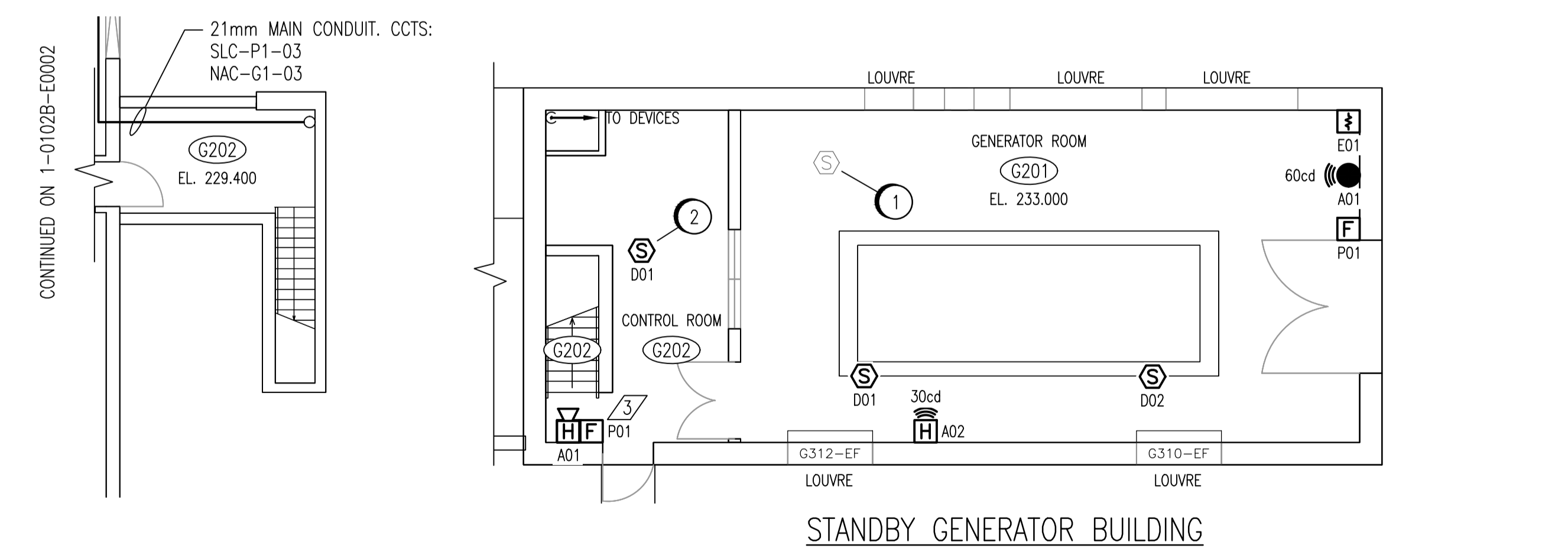
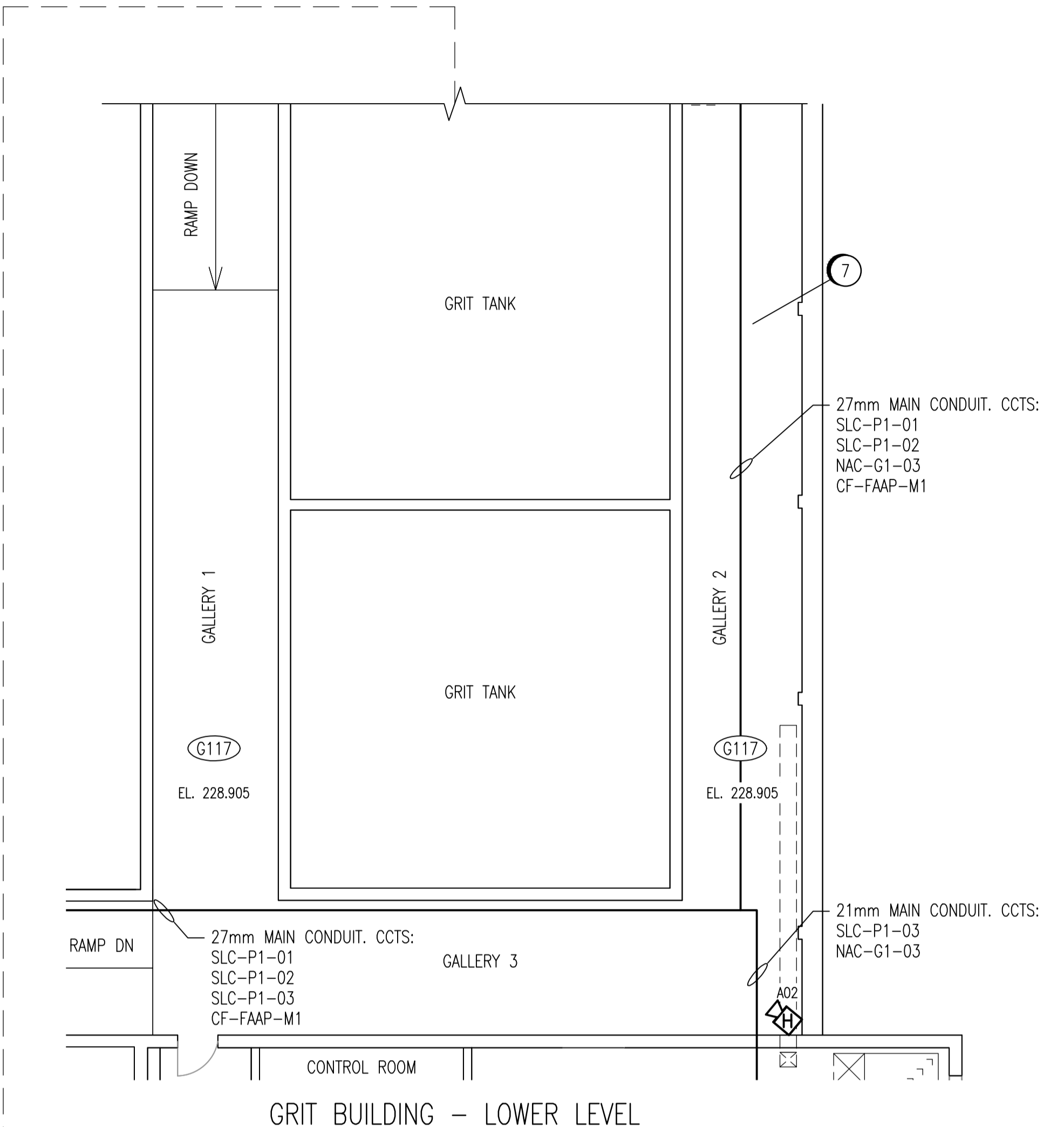
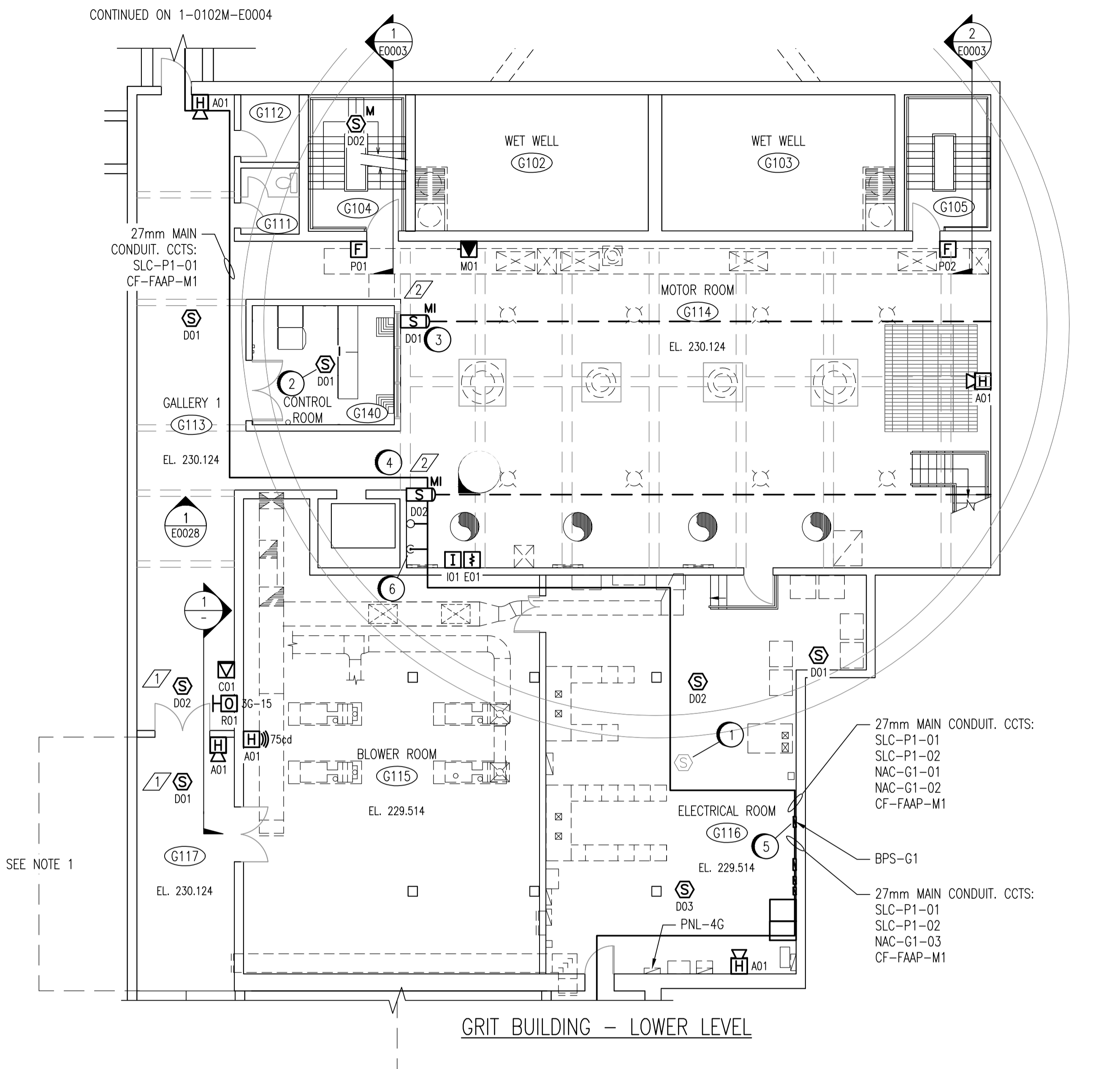
ROOM DETAILS			
ROOM ID	HEIGHT	CEILING TYPE	REF DWG
G104	26.11m	STAIRWELL	SEP-825
G105	22.22m	STAIRWELL	SEP-825
G113	4.02m	CONCRETE	SEP-817
G114	8.23m	BEAMS > 450mm DEEP	SEP-813
G115	6.25m	CONCRETE	SEP-020
G116	3.05m	CONCRETE	SEP-020
G117	5.64m	CONCRETE	SEP-020
	3.58m	CONCRETE	SEP-020
G140	2.62m	SUSPENDED ACOUSTIC TILE	SEP-817
G201	6.78m	CONCRETE	SEP-870
G202	2.65m	SUSPENDED ACOUSTIC TILE	SEP-870
	6.25m	STAIRWELL	SEP-870

SEE NOTE 1

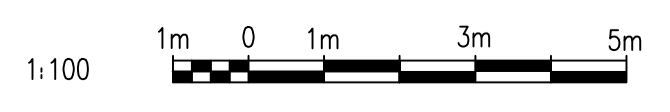
CONSTRUCTION NOTES	
1	REMOVE EXISTING DETECTORS AND ALL WIRING BACK TO DCS, AFTER NEW FAS IS IN SERVICE.
2	REPLACE EXISTING DETECTOR. REMOVE ALL WIRING TO DCS.
3	MOUNT FAS-G114-D01 4.5m AFF ON WEST WALL BELOW RAILING FOR MEZZANINE LEVEL. MOUNT REFLECTIVE MIRROR ON OPPOSING WALL.
4	MOUNT FAS-G114-D02 6m AFF ON WEST WALL AS SHOWN. MOUNT REFLECTIVE MIRROR ON OPPOSING WALL.
5	INSTALL NEW 120V, 15A FEEDER FROM DISTRIBUTION PNL-4G, CIRCUIT 10 TO BPS-G1. CABLE TO BE 12 AWG RW90 IN CONDUIT. BREAKER TO BE RED AND LOCKABLE ON.
6	INSTALL PENETRATIONS AS PER DETAIL 1 OF 1-0102A-E0008.
7	INSTALL CONDUIT EXPANSION JOINT AT LOCATION OF EXISTING JOINTS.

DESIGN INTENT NOTES	
1	FAS-G117-D01 AND FAS-G113-D01 ARE INTENDED TO ACTIVATE DOOR RELEASE FAS-G113-R01 IN THE EVENT OF A FIRE.
2	FAS-G114-D01 AND FAS-G114-D02 ARE INTENDED TO DETECT SMOKE ORIGINATING FROM THE LIFT PUMP MOTORS AS IT IS DRAWN TOWARD THE RETURN AIR DUCTS FOR G680-AHU AND G681-AHU.
3	PULLSTATION FAS-G202-P01 IS NOT POSITIONED ON THE LATCH SIDE OF THE EXIT DOORWAY IN ORDER TO INCREASE ITS VISIBILITY AND ACCESSIBILITY WHEN EXITING THE GENERATOR ROOM, AND WHEN USING THE STAIRWELL.

INTERLOCK SCHEDULE		
INITIATING DEVICE	CONTROLLED DEVICE	ACTION
ALL	FAS-G113-R01	RELEASE MAGNETICALLY HELD OPEN FIRE DOOR



- NOTES:
- THE NOTED PORTION OF GALLERY 1 (G117) ADJACENT TO THE BLOWER ROOM (G115) HAS A HIGHER CEILING THAN THE REMAINDER OF GALLERY 1 DUE TO THE GRIT CHANNEL ABOVE THE PORTION OF THE GALLERY SOUTH OF THE BLOWER ROOM.
  - DEVICE TAGS ARE SHOWN IN SHORTHAND NOTATION. FULL DEVICE TAG FORMAT IS FAS-Gxxx-yyy, WHERE xxx IS THE ROOM NUMBER, AND yyy IS THE DEVICE IDENTIFIER.



NO.	REVISIONS	DATE	DESIGN	CHECK
00	ISSUED FOR TENDER, BID OPP. 209-2011	2011/03/11	EFB	CJR

DESIGNED BY: E. BOHNCKE	CHECKED BY: C. REIMER
DRAWN BY: E. BOHNCKE	APPROVED BY: C. REIMER
SCALE: 1:100	RELEASED FOR CONSTRUCTION BY: N. HARRINGTON
DATE: 2009/03/20	DATE: 2011/03/11
CONSULTANT NO.: 112577-0101-47DD-0024	

ENGINEER'S SEAL  
ORIGINAL DRAWING  
SEALED BY:  
C. J. REIMER  
SNC-Lavalin  
MEMBER #21968  
2011/03/25  
REV. 00

**THE CITY OF WINNIPEG**  
 WATER AND WASTE DEPARTMENT  
 SOUTH END WATER POLLUTION CONTROL CENTRE  
 FIRE ALARM UPGRADE  
 PLAN LAYOUT  
 FIRE ALARM - GRIT BUILDING  
 LOWER LEVEL  
 CITY DRAWING NUMBER: 1-0102G-E0004  
 SHEET: 001  
 REV: 00  
 SIZE: A1

DRAWING NUMBER	REFERENCE DRAWINGS
1-0102G-E0011	PANEL SCHEDULES - GRIT BUILDING
SEP-2105	SMOKE DETECTORS LOOPS G577/G578
SEP-2037	SMOKE DETECTORS LOOPS G303/G304
SEP-825	LIGHTING & BUILDING SERVICES FLOOR PLAN
1-0102G-E0014	ELECTRICAL CLASSIFICATION PLAN
1-0102G-E0013	ELECTRICAL CLASSIFICATION PLAN
1-0102A-E0001	FIRE ALARM LEGEND AND DETAILS