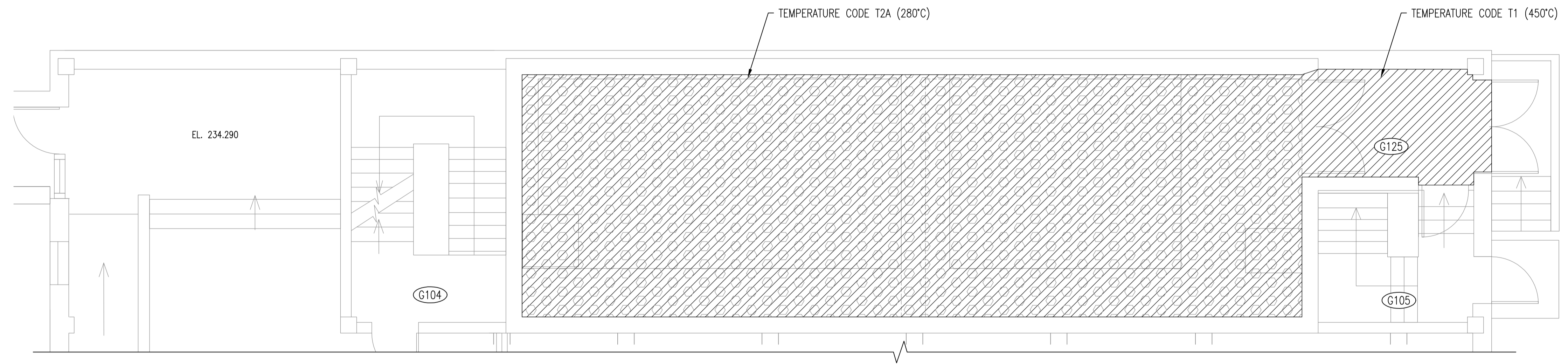


KEYPLAN

LEGEND

	HAZARDOUS CLASS I, ZONE 1, GROUP IIA
	HAZARDOUS CLASS I, ZONE 2, GROUP IIA
	CATEGORY 1 (MOISTURE)
	CATEGORY 2 (CORROSIVE)
	CATEGORY 2 WET (MOISTURE & CORROSIVE)



WET WELL & FOYER  
SCALE: 1:50

VENTILATION ANALYSIS							
SPACE	OUTDOOR	VENTILATION TRANSFER	RETURN	PRESSURE	HEATED	VENT FAILURE DETECTION	NOTES
WET WELL		SEE NOTE 1		NEGATIVE	NO (SEE NOTE 2)	YES	
WET WELL FOTER	0	0	0	NEUTRAL	YES	N/A	

SPECIFIC NOTES:

- THE CITY HAS PLANNED UPGRADES TO THE WET WELL VENTILATION THAT WOULD PROVIDE 12.0 ACH OF VENTILATION IN SUMMER AND 6.0 ACH OF VENTILATION DURING THE WINTER.
- THE PLANNED UPGRADES INCLUDE HEATING OF THE UPPER LEVEL VENTILATION TO 4°C.

NOTES:  
1. THE INDICATED VENTILATION RATES ARE BASED ON EXISTING DOCUMENTATION AND HAVE NOT BEEN VERIFIED VIA ONSITE TESTING.



NO.	REVISIONS	DATE	DESIGN	CHECK
00	ISSUED FOR TENDER, BID OPP. 209-2011	2011/03/31	TMC	CJR

 SNC-LAVALIN INC. 148 Nature Park Way Winnipeg, MB, Canada R3P 0X7 204-786-8080	
DESIGNED BY: I. CHURCH	CHECKED BY: C. REIMER
DRAWN BY: S. COATES	APPROVED BY: C. REIMER
SCALE: 1:50	RELEASED FOR CONSTRUCTION BY: N. HARRINGTON
DATE: 2009/11/04	DATE: 2011/03/31
CONSULTANT NO.: 112577-0113-47DD-1203	

ENGINEER'S SEAL  
ORIGINAL DRAWING  
SEALED BY:  
C. J. REIMER  
SNC-LAVALIN  
MEMBER #21968  
2011/03/31  
REV. 00

THE CITY OF WINNIPEG  
 WATER AND WASTE DEPARTMENT  
 SOUTH END WATER POLLUTION CONTROL CENTRE  
 ELECTRICAL CLASSIFICATION UPGRADES  
 ELECTRICAL CLASSIFICATION PLAN  
 WET WELL AND FOYER  
 CITY DRAWING NUMBER: 1-0102G-E0015  
 SHEET: 001  
 REV.: 00  
 SIZE: A1