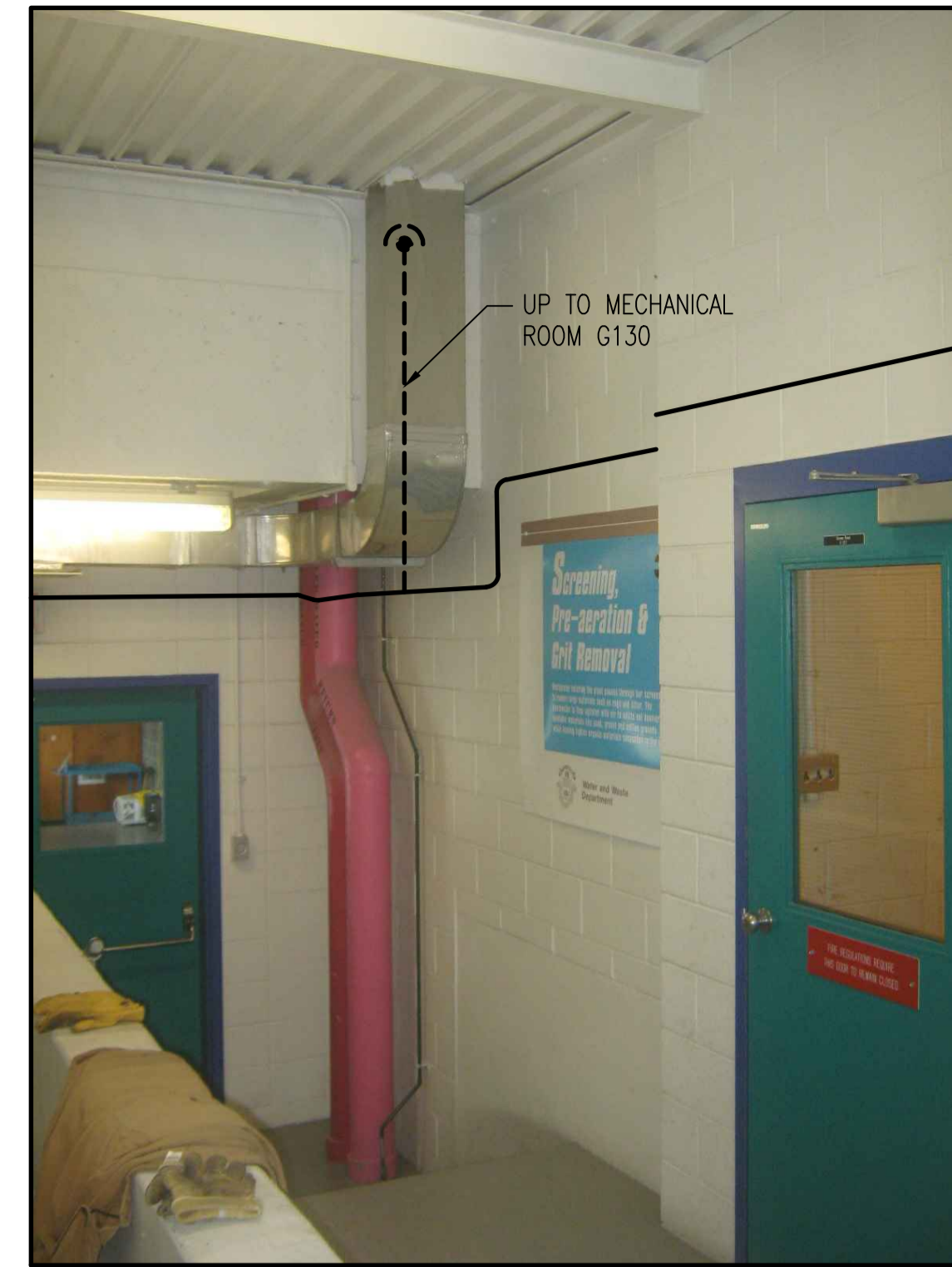
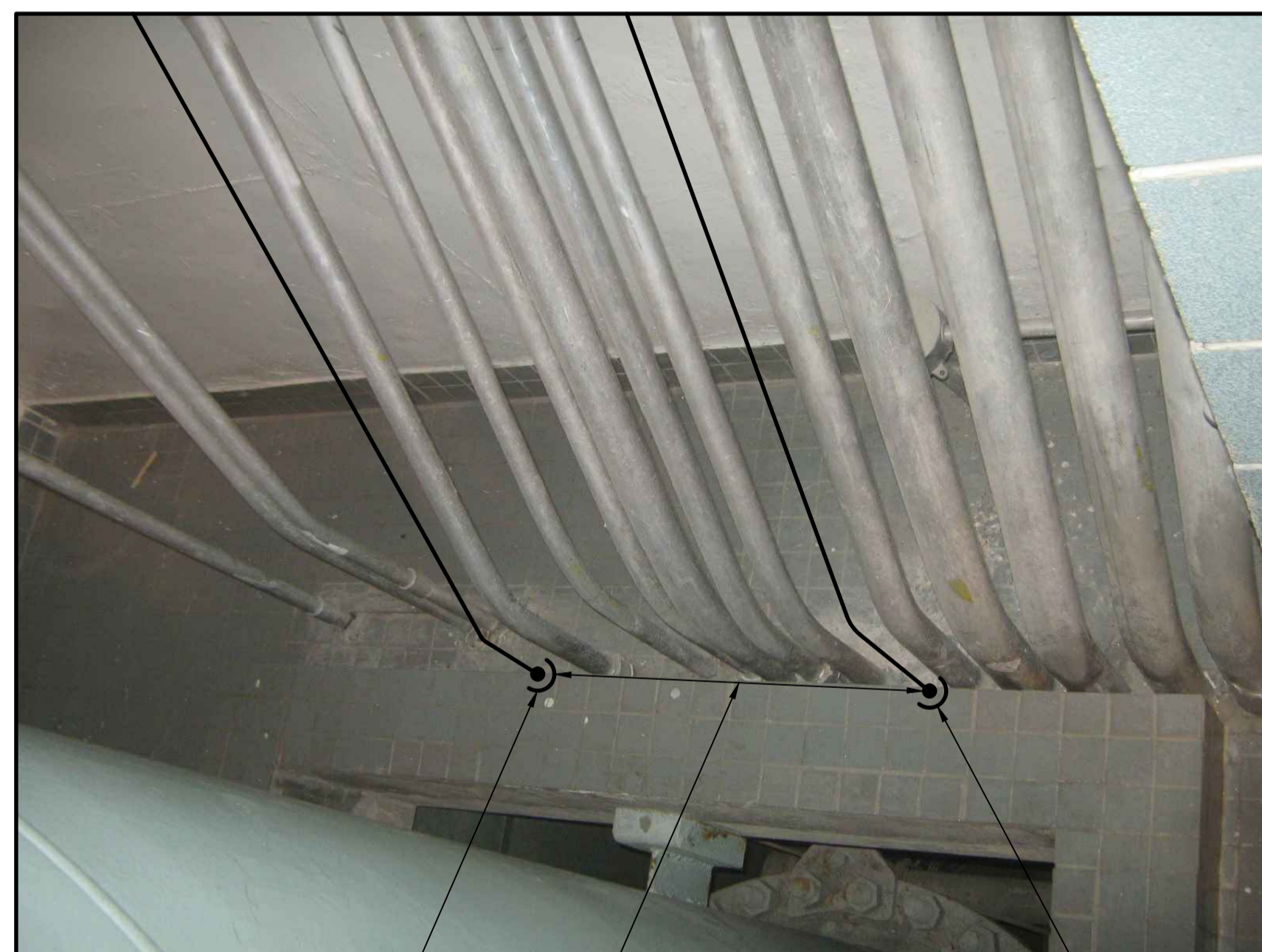




1 GALLERY 1 (G113)  
E0004 SCALE: NTS



3 WALKWAY (G137)  
E0002 SCALE: NTS



2 MOTOR ROOM PIPE CHASE  
E0004 SCALE: NTS

TO DRYWELL SERVICE LEVEL G108

NOTE: MAINTAIN A 300mm SPACING BETWEEN FAS CONDUITS ON VERTICAL RUNS

FROM DRYWELL SERVICE LEVEL G108



4 WALKWAY (G137)  
E0002 SCALE: NTS

**NOTE:**  
1. THIS DRAWING IS INTENDED TO SHOW TYPICAL ROUTING COMPLEXITY OF MAIN CONDUIT RUNS AND GENERAL ROUTING EXPECTATIONS. SPECIFIC ROUTING TO BE DETERMINED BY CONTRACTOR.



NO.	REVISIONS	DATE	DESIGN	CHECK
00	ISSUED FOR TENDER, BID OPP. 209-2011	2011/03/11	EFB	CJR

SNC-LAVALIN INC. 148 Nature Park Way Winnipeg, MB, Canada R3P 0X7 204-786-8080	
DESIGNED BY: E. BOHNCKE	CHECKED BY: C. REIMER
DRAWN BY: S. FUNK	APPROVED BY: C. REIMER
SCALE: NTS	RELEASED FOR CONSTRUCTION BY: N. HARRINGTON
DATE: 2010/12/02	DATE: 2011/03/11
CONSULTANT NO.: 112577-0101-47DD-0029	

ENGINEER'S SEAL

ORIGINAL DRAWING  
SEALED BY:  
C. J. REIMER  
SNC-LAVALIN  
MEMBER #21968  
2011/03/25  
REV. 00

THE CITY OF WINNIPEG WATER AND WASTE DEPARTMENT			
SOUTH END WATER POLLUTION CONTROL CENTRE FIRE ALARM UPGRADE MAIN CONDUIT ROUTING GRIT BUILDING			
CITY DRAWING NUMBER	SHEET	REV.	SIZE
1-0102G-E0028	001	00	A1

DRAWING NUMBER	REFERENCE DRAWINGS
----------------	--------------------