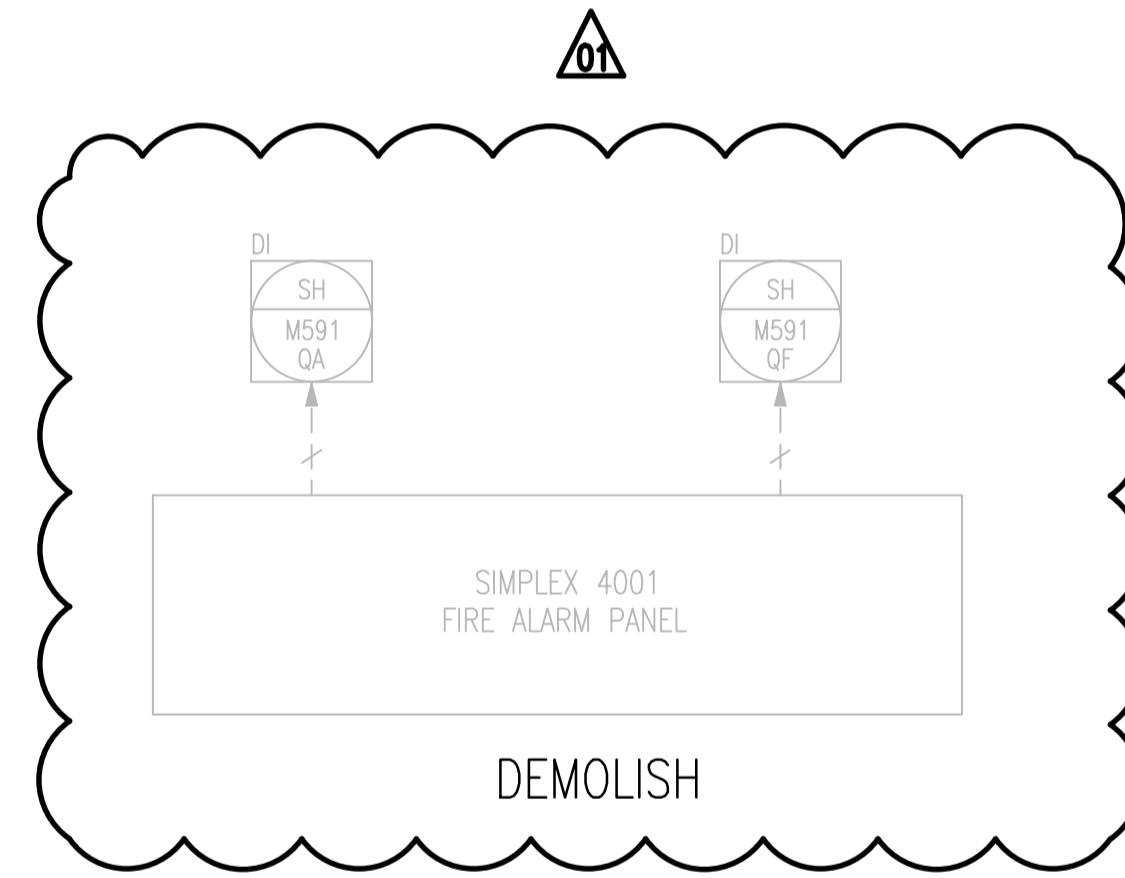
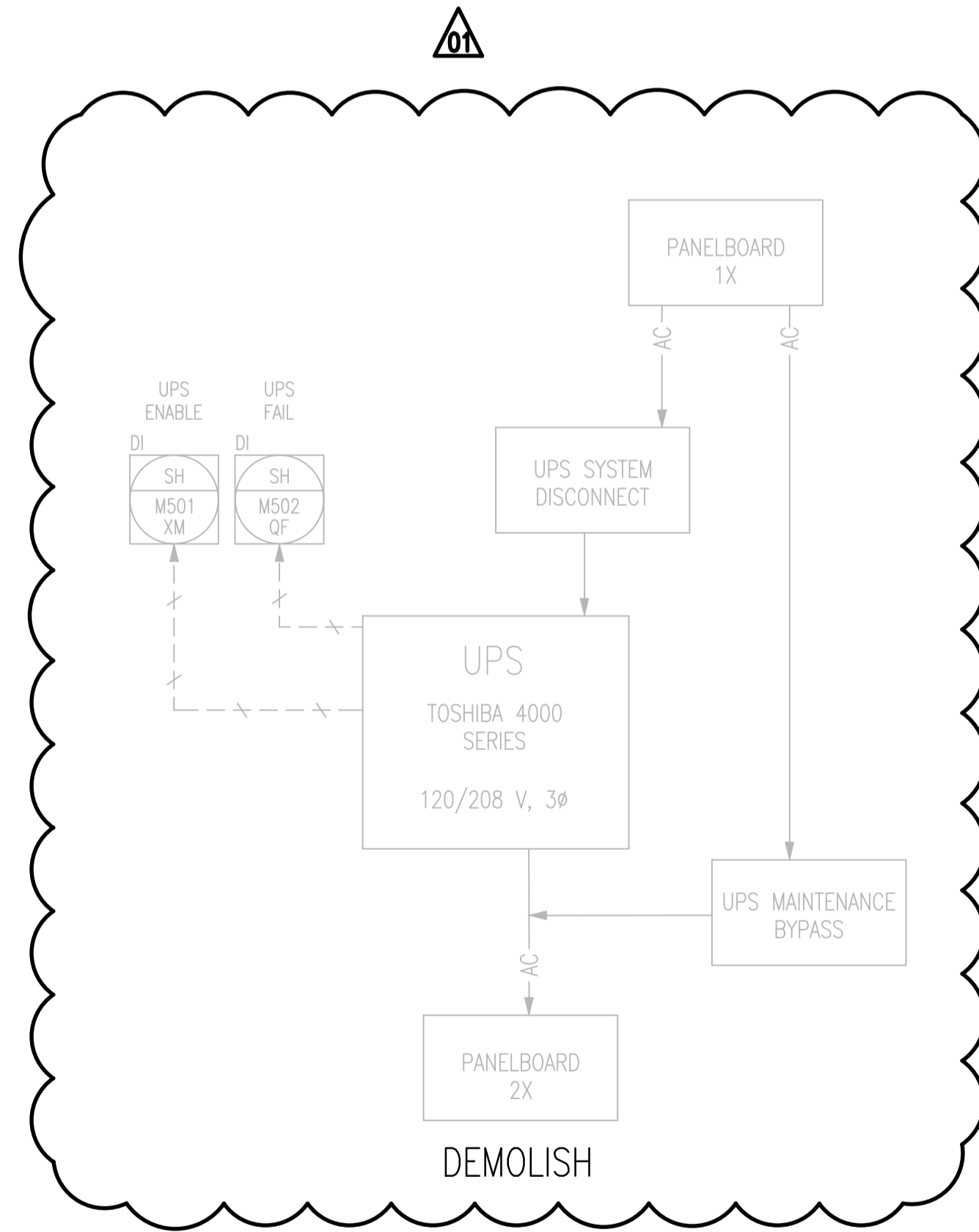
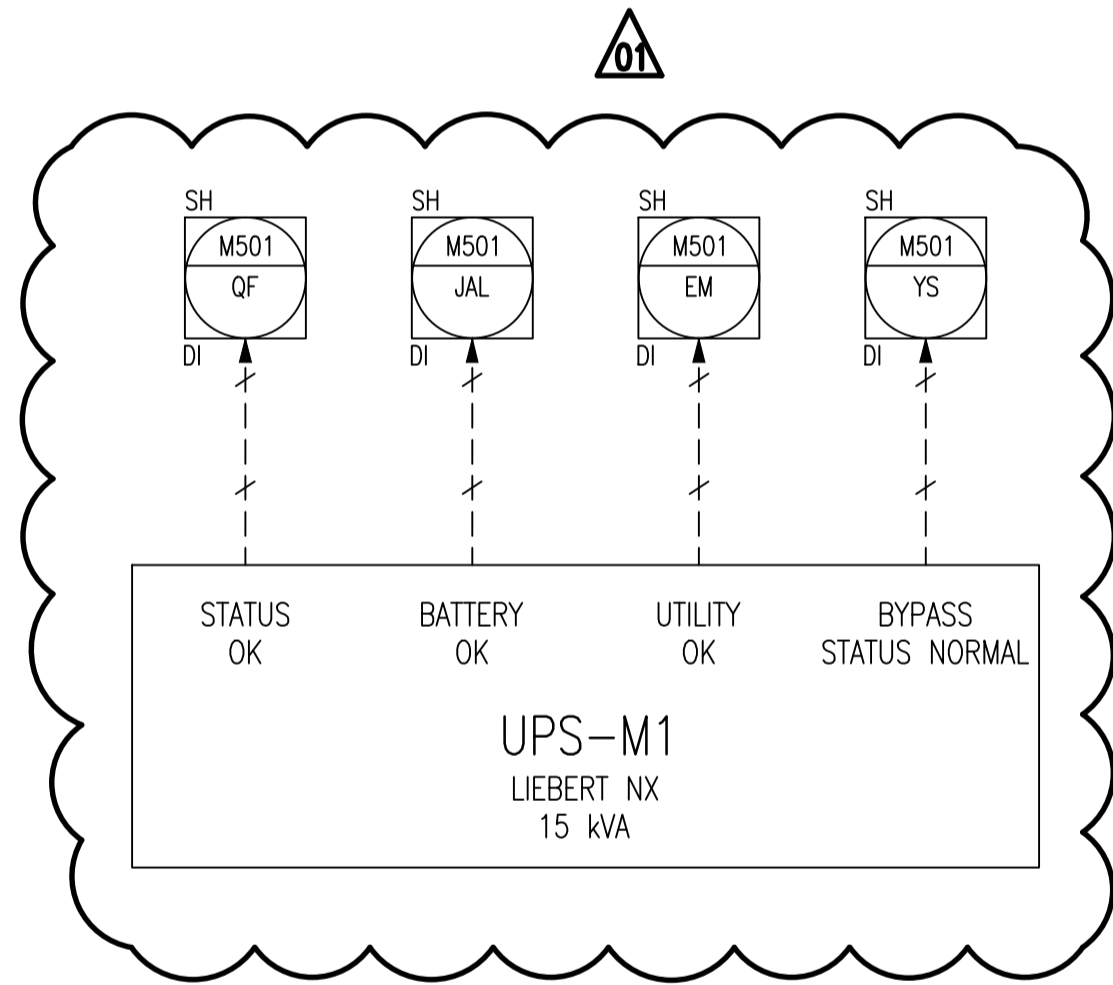
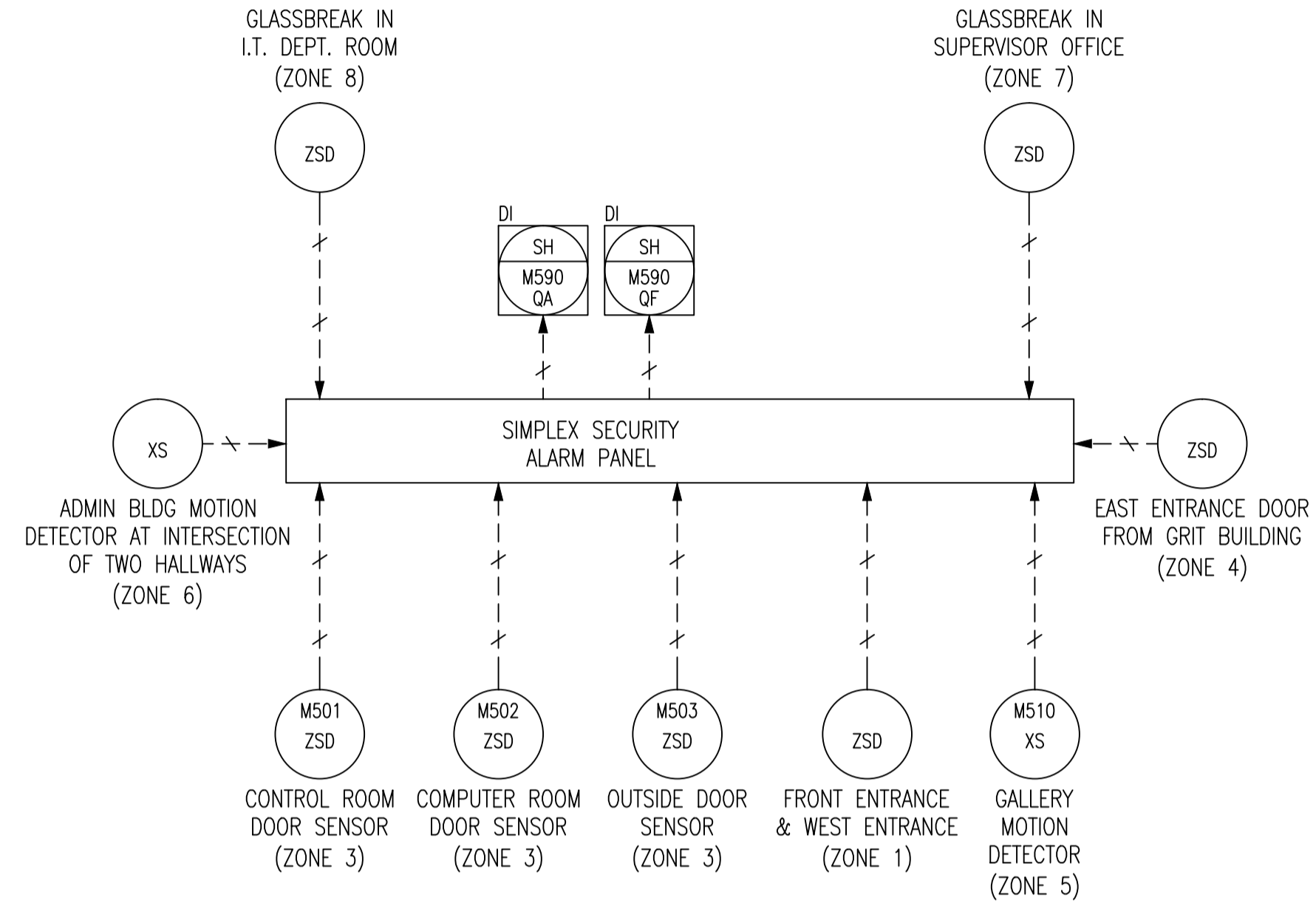
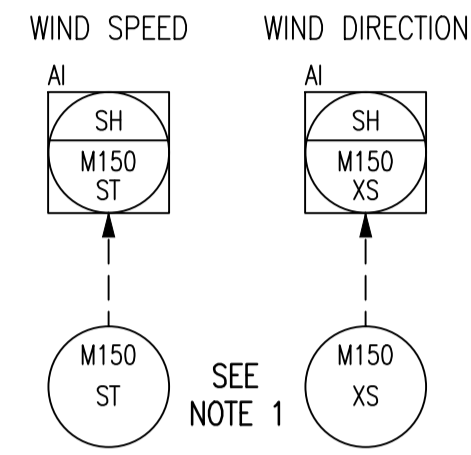
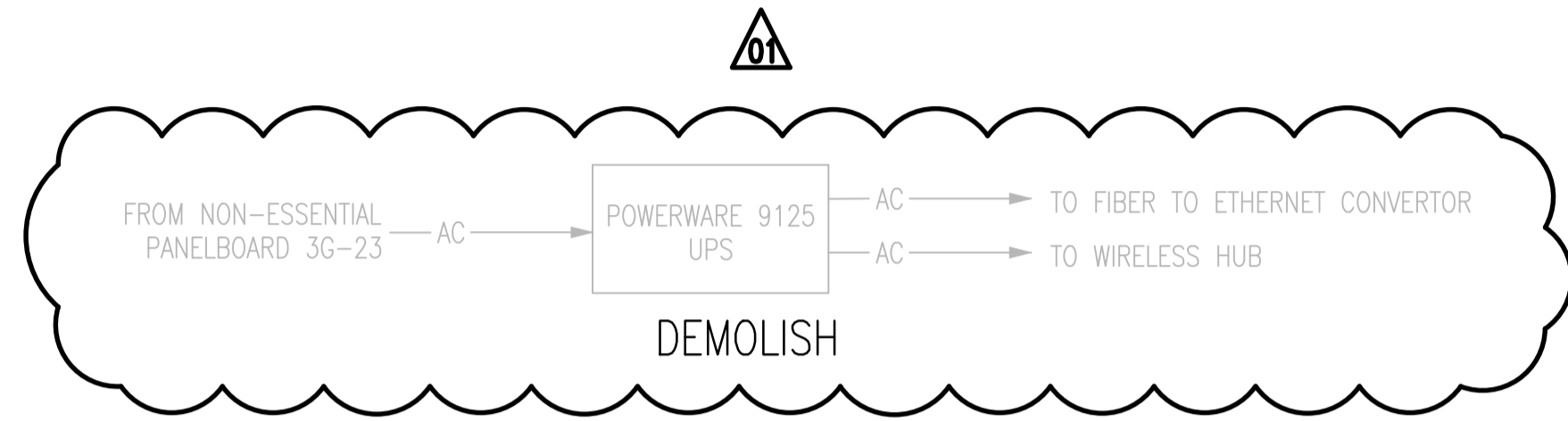


INCONSISTENCIES

I-1 MOTION DETECTOR M510-XS IS CURRENTLY DESIGNATED AS M510-AE.



NOTES:

- M150-ST AND 150-XS ARE MOUNTED ON THE ROOF OF THE RAW SEWAGE PUMP BUILDING.

1-0102A-D-A0001	PROCESS & INSTRUMENT DIAGRAMS LEGEND & DETAILS
DRAWING NUMBER	REFERENCE DRAWINGS

NO.	REVISIONS	DATE	DESIGN	CHECK
01	ADDED UPS-M1 AND REMOVED FIRE ALARM	2011/03/11	TMC	CJR
00	ISSUED FOR CITY USE	2006/11/28	-	EFB

		SNC-LAVALIN INC. 148 Nature Park Way Winnipeg, MB, Canada R3P 0X7 204-786-8080	
DESIGNED BY:	EXISTING	CHECKED BY:	EFB
DRAWN BY:	EFB	APPROVED BY:	CJR
SCALE:	NTS	RELEASED FOR CONSTRUCTION BY:	N. HARRINGTON
DATE:	2006/06/05	DATE:	2011/03/11
CONSULTANT NO.:		112577-0106-49DD-0001	

ENGINEER'S SEAL

ORIGINAL DRAWING
 SEALED BY:
 T. M. CHURCH
 SNC-LAVALIN
 MEMBER #32682
 2011/03/25
 REV. 01
 CHANGES ONLY

THE CITY OF WINNIPEG WATER AND WASTE DEPARTMENT	
SOUTH END WATER POLLUTION CONTROL CENTRE ADMINISTRATION BUILDING PROCESS & ADMINISTRATION DIAGRAM MISCELLANEOUS	
CITY DRAWING NUMBER	1-0102M-A0011
SHEET	001
REV.	01
SIZE	D