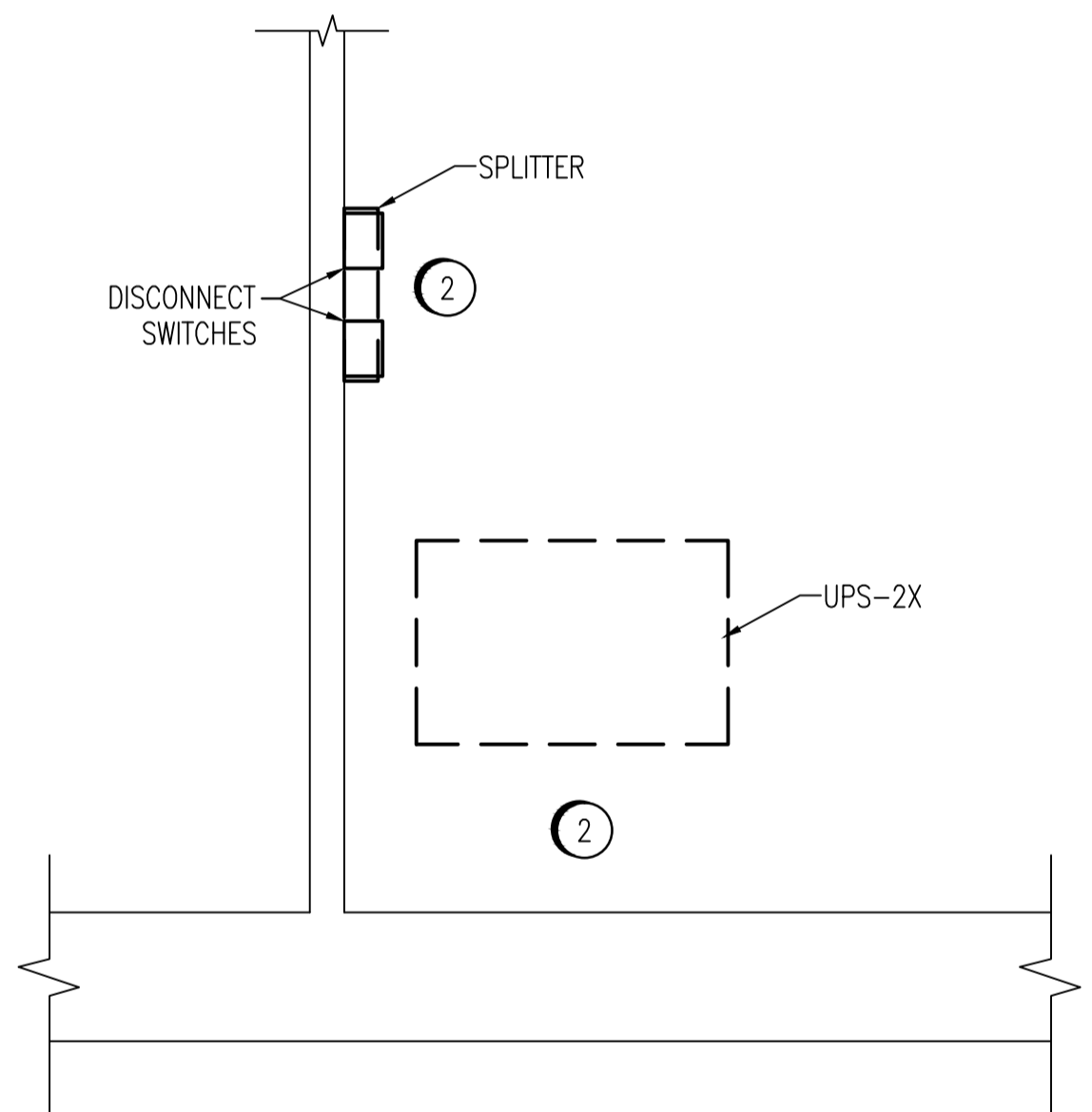
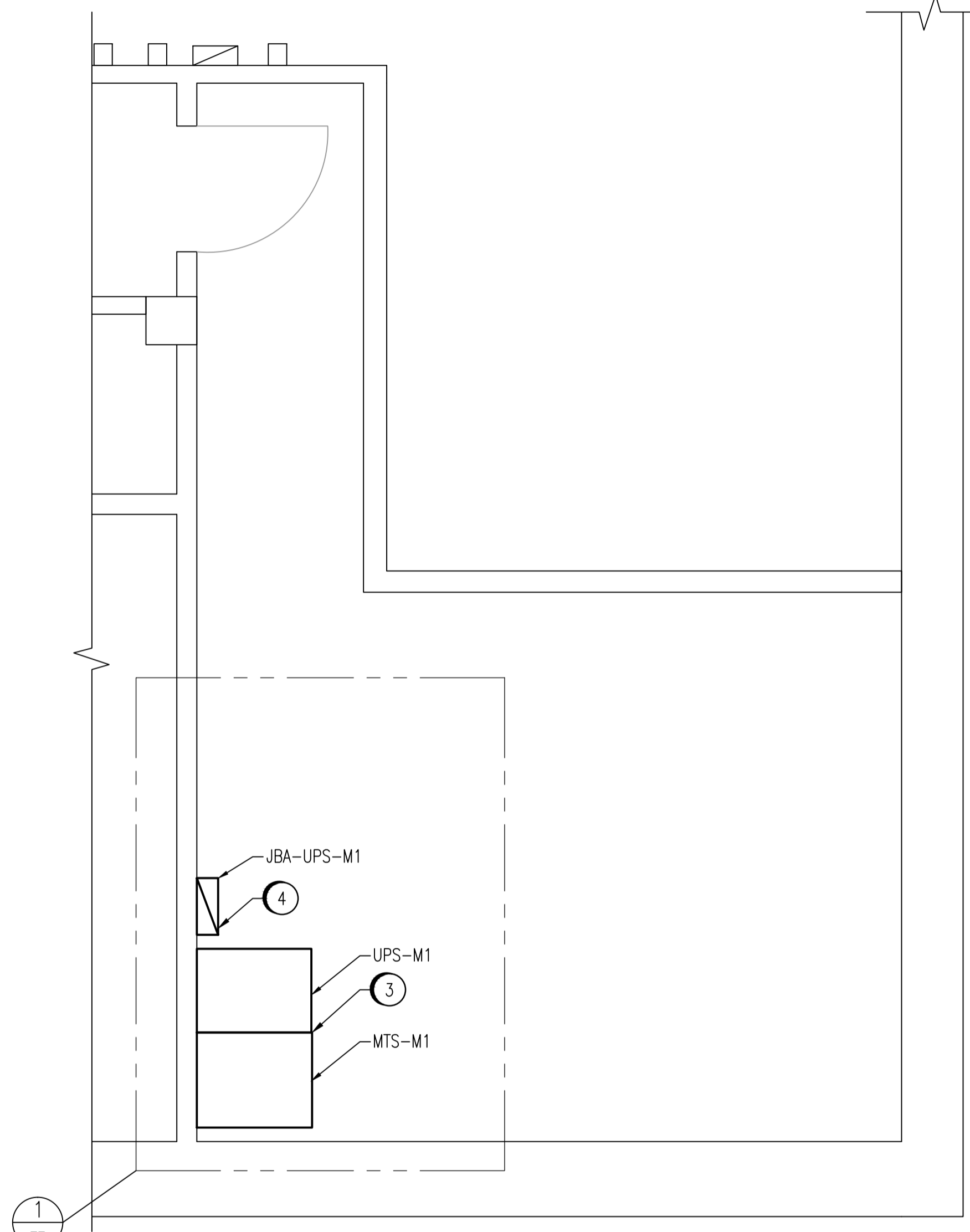


KEYPLAN

PHASE	NO.	CONSTRUCTION NOTES
1	①	INSTALL TEMPORARY FEEDER CABLE FOR PNL-2X.
	②	REMOVE EXISTING UPS, SPLITTER, DISCONNECT SWITCHES AND ASSOCIATED WIRING.
2	③	INSTALL AND CONFIGURE UPS-M1 AND MTS-M1. FOLLOW MANUFACTURERS INSTRUCTIONS UNLESS OTHERWISE NOTED.
	④	INSTALL JUNCTION BOX JBA-UPS-M1 FOR UPS CONTROL WIRING.
	⑤	RE-FEED PNL-2X FROM MTS-M1.
	⑥	COORDINATE WITH CITY PERSONNEL FOR REMOVAL OF EXISTING UNINTERRUPTIBLE POWER SUPPLIES FROM UNDER FLOOR CABLE TRAY (WORK BY CITY).

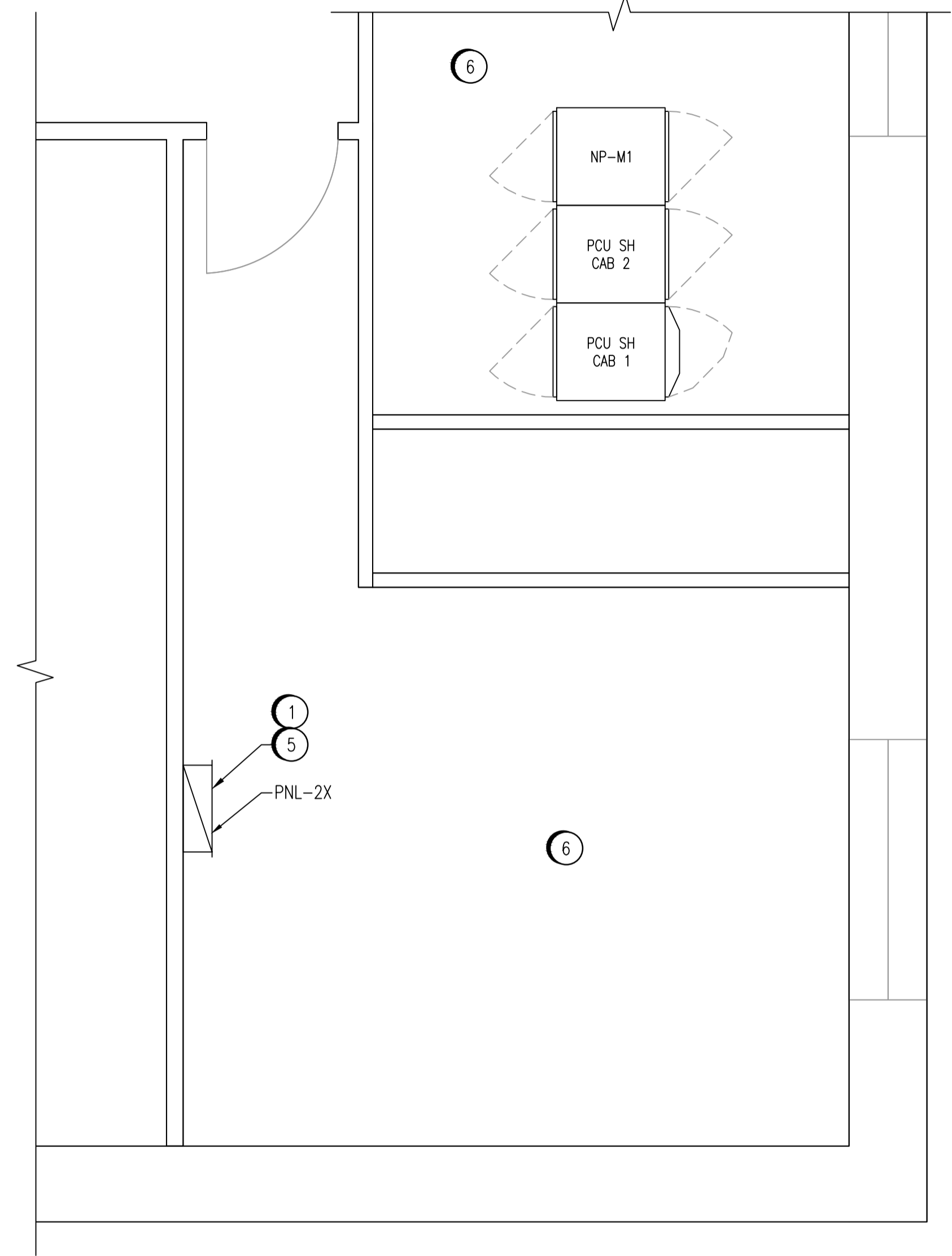


① EXISTING EQUIPMENT DETAIL
SCALE 1:30



①
FOR EXISTING EQUIPMENT

ADMINISTRATION BUILDING LOWER LEVEL COMPUTER ROOM
1:30



ADMINISTRATION BUILDING UPPER LEVEL COMPUTER ROOM
1:30

NOTES:

1. THIS DRAWING IS BASED ON THE EXISTING LAYOUT OF THE COMPUTER ROOMS.



NO.	REVISIONS	DATE	DESIGN	CHECK
00	ISSUED FOR TENDER, BID OPP. 209-2011	2011/03/11	TMC	CJR

SNC-LAVALIN INC.
148 Nature Park Way
Winnipeg, MB, Canada R3P 0X7
204-786-8080

DESIGNED BY: EXISTING
DRAWN BY: S. COATES
SCALE: 1:30
DATE: 2009/11/19

CHECKED BY: C. REIMER
APPROVED BY: C. REIMER
RELEASED FOR CONSTRUCTION BY: N. HARRINGTON
DATE: 2011/03/11

CONSULTANT NO.: 112577-0106-47DD-0102

ENGINEER'S SEAL
ORIGINAL DRAWING
SEALED BY:
T. M. CHURCH
SNC-LAVALIN
MEMBER # 32682
2011/03/25
REV. 00

THE CITY OF WINNIPEG
WATER AND WASTE DEPARTMENT

SOUTH END WATER POLLUTION CONTROL CENTRE
ESSENTIAL SYSTEM UPGRADES
PLAN LAYOUT
ADMINISTRATION BUILDING COMPUTER ROOMS

CITY DRAWING NUMBER: 1-0102M-E0009
SHEET: 001
REV.: 00
SIZE: A1