

KEYPLAN

INTERLOCK SCHEDULE

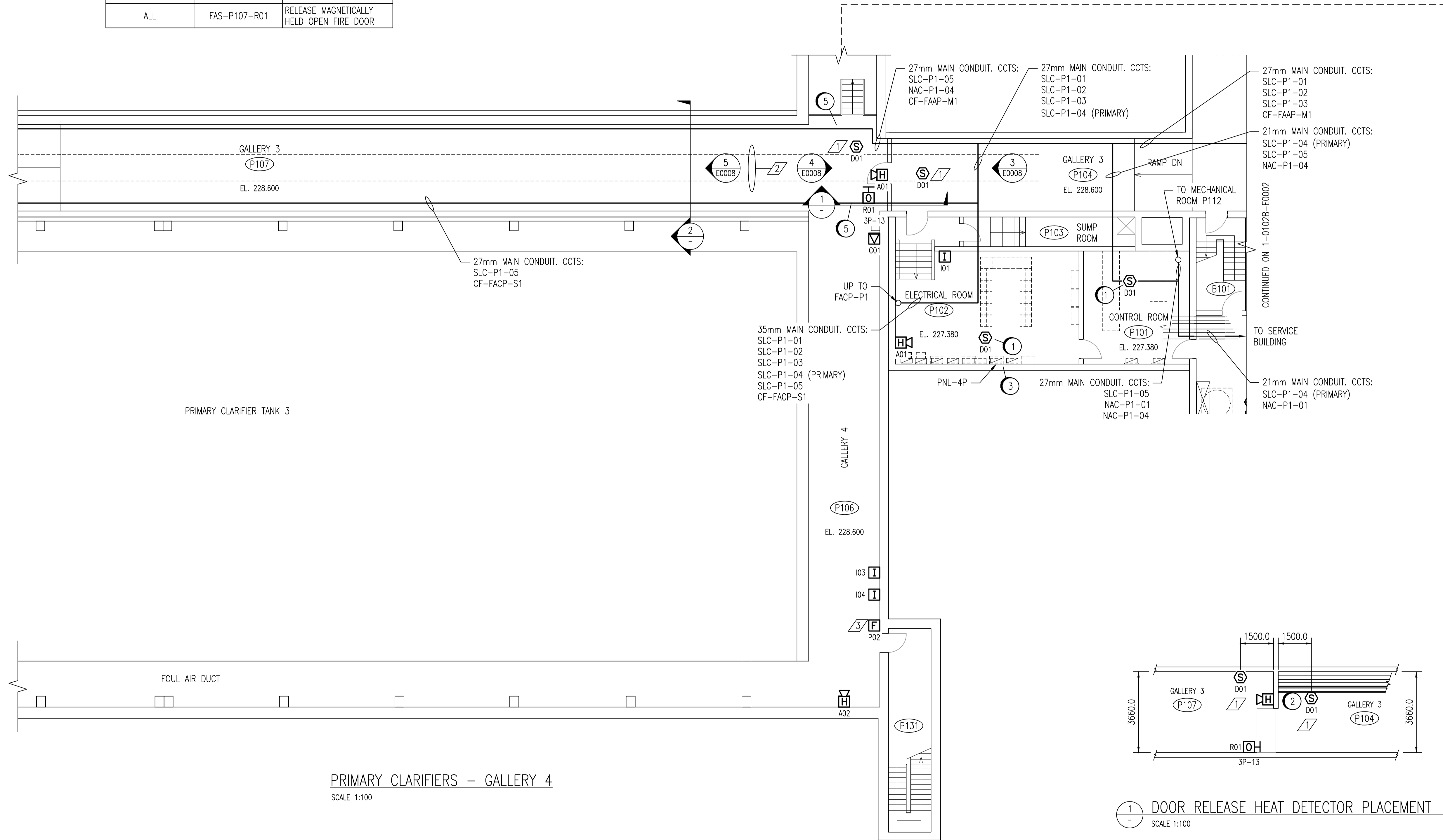
INITIATING DEVICE	CONTROLLED DEVICE	ACTION
ALL	FAS-P107-R01	RELEASE MAGNETICALLY HELD OPEN FIRE DOOR

CONSTRUCTION NOTES	
1	REPLACE EXISTING DETECTOR. REMOVE ALL WIRING TO DCS.
2	INSTALL FAS-P104-D01 BELOW CEILING LEVEL. ATTACH TO PIPE RACK TO MINIMIZE OBSTRUCTIONS.
3	INSTALL NEW 120V, 15A FEEDER FROM ESSENTIAL PNL-4P, CIRCUIT 1 TO FACP-1. UTILIZE 12 AWG RW90 IN 21mm CONDUIT. BREAKER TO BE RED AND LOCKABLE ON.
4	PROVIDE UNISTRUT SUPPORT 150mm BELOW EXISTING PIPE SUPPORTS. CLAMP CONDUIT TO NEW SUPPORTS.
5	INSTALL CONDUIT EXPANSION JOINT AT LOCATION OF EXISTING JOINTS.

DESIGN INTENT NOTES	
1	FAS-P107-D01 AND FAS-P104-D01 ARE INTENDED TO ACTIVATE DOOR RELEASE FAS-P107-R01 IN THE EVENT OF A FIRE.
2	THE OVERHEAD ELECTRICAL SUPPORTS INCLUDING THE BUS DUCT AND LIGHT FIXTURES IN GALLERY 3 PREVENTS PLACEMENT OF DETECTORS ALONG THE CENTERLINE OF THE DOORWAY AT CEILING LEVEL.
3	PULLSTATION FAS-P106-P02 IS NOT POSITIONED ON THE LATCH SIDE OF THE EXIT DOORWAY, AS MOST TRAFFIC WILL EXIT FROM THE NORTH SIDE OF THE DOOR.

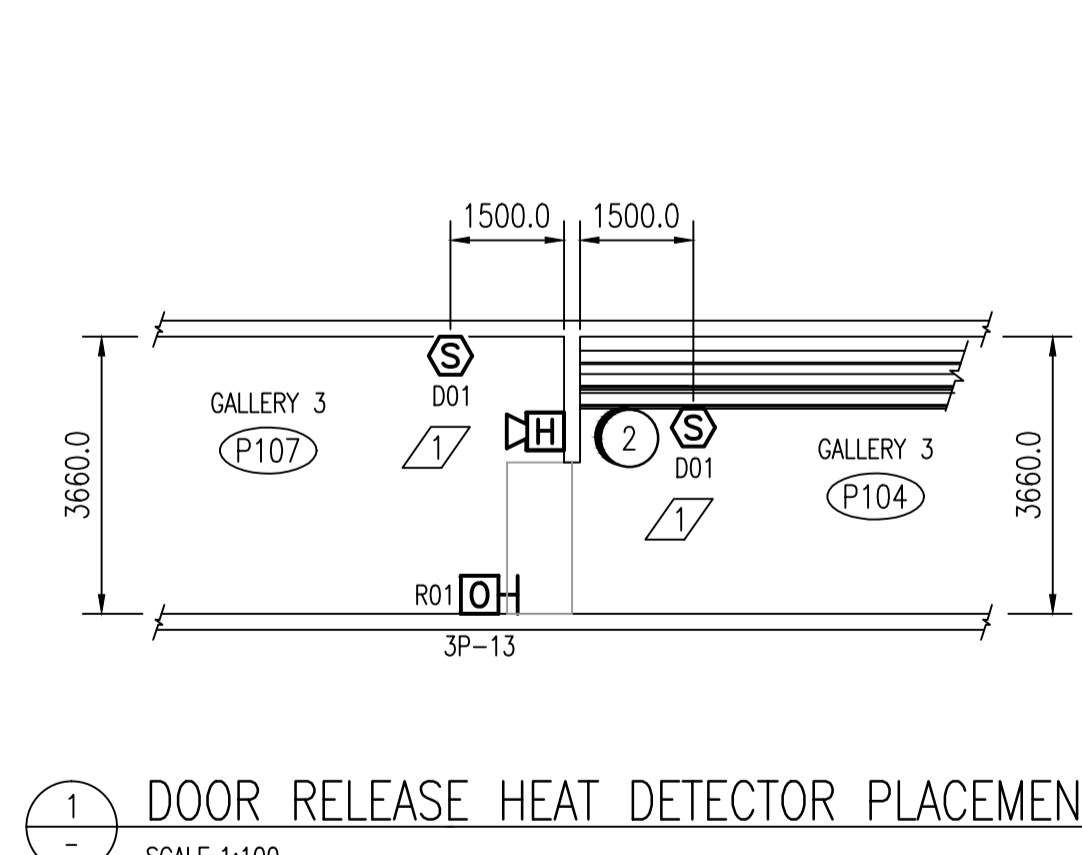
ROOM DETAILS			
ROOM ID	HEIGHT	CEILING TYPE	REF DWG
P101	2.44m	SUSPENDED ACOUSTIC TILE	SEP-283
P102	2.44m	SUSPENDED ACOUSTIC TILE	SEP-283
P104	3.65m	CONCRETE	SEP-283
P106	4.88m	CONCRETE	SEP-258
P107	3.66m	CONCRETE (*MANY OBSTRUCTIONS)	SEP-258
P116	10.57m	STAIRWELL (STEEL)	SEP-054
P124	3.61m	CONCRETE	SEP-258
P131	8.53m	STAIRWELL	SEP-252

CONTINUED ON 1-0102P-E0005



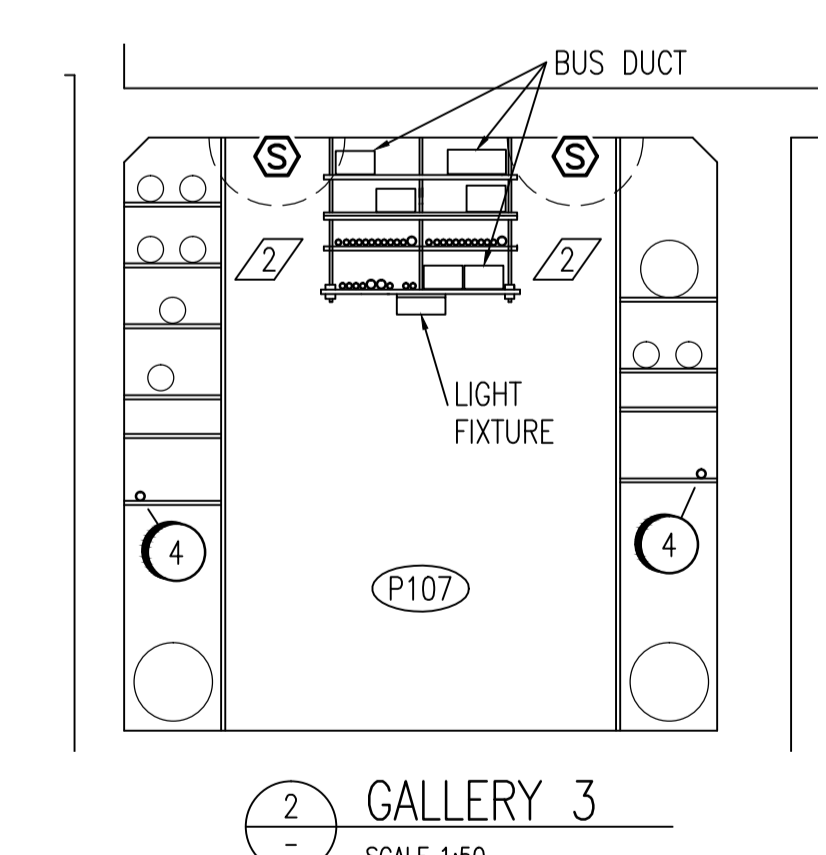
PRIMARY CLARIFIERS - GALLERY 4

SCALE 1:100



DOOR RELEASE HEAT DETECTOR PLACEMENT

SCALE 1:100

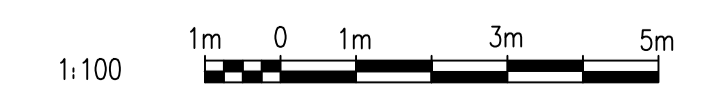


GALLERY 3

SCALE 1:50

DRAWING NUMBER	REFERENCE DRAWINGS
SEP-1162	SMOKE DETECTOR LOOP P538
SEP-1161	SMOKE DETECTOR LOOP P534
SEP-278	EXISTING CLARIFIERS ELECTRICAL - LIGHTING
1-0102P-E0013	ELECTRICAL CLASSIFICATION PLAN
1-0102A-E0001	FIRE ALARM LEGEND AND DETAILS

NOTES:  
 1. DEVICE TAGS ARE SHOWN IN SHORTHAND NOTATION. FULL DEVICE TAG FORMAT IS FAS-Pxxx-yyy, WHERE xxx IS THE ROOM NUMBER, AND yyy IS THE DEVICE IDENTIFIER.



NO.	REVISIONS	DATE	DESIGN	CHECK
00	ISSUED FOR TENDER, BID OPP. 209-2011	2011/03/11	EFB	CJR

SNC-Lavalin Inc. 148 Nature Park Way Winnipeg, MB, Canada R3P 0X7 204-786-8080		ENGINEER'S SEAL  ORIGINAL DRAWING SEALED BY: C. J. REIMER SNC-Lavalin MEMBER #21968 2011/03/25 REV. 00
DESIGNED BY: E. BOHNCKE	CHECKED BY: C. REIMER	CONSULTANT NO.: 112577-0101-47DD-0044
DRAWN BY: E. BOHNCKE	APPROVED BY: C. REIMER	
SCALE: AS SHOWN	RELEASED FOR CONSTRUCTION BY: N. HARRINGTON DATE: 2011/03/11	

THE CITY OF WINNIPEG  
 WATER AND WASTE DEPARTMENT  
  
 SOUTH END WATER POLLUTION CONTROL CENTRE  
 FIRE ALARM UPGRADE  
 PLAN LAYOUT  
 FIRE ALARM - PRIMARY CLARIFIERS  
 GALLERIES 3 & 4  
  
 CITY DRAWING NUMBER: 1-0102P-E0004  
 SHEET: 001  
 REV.: 00  
 SIZE: A1