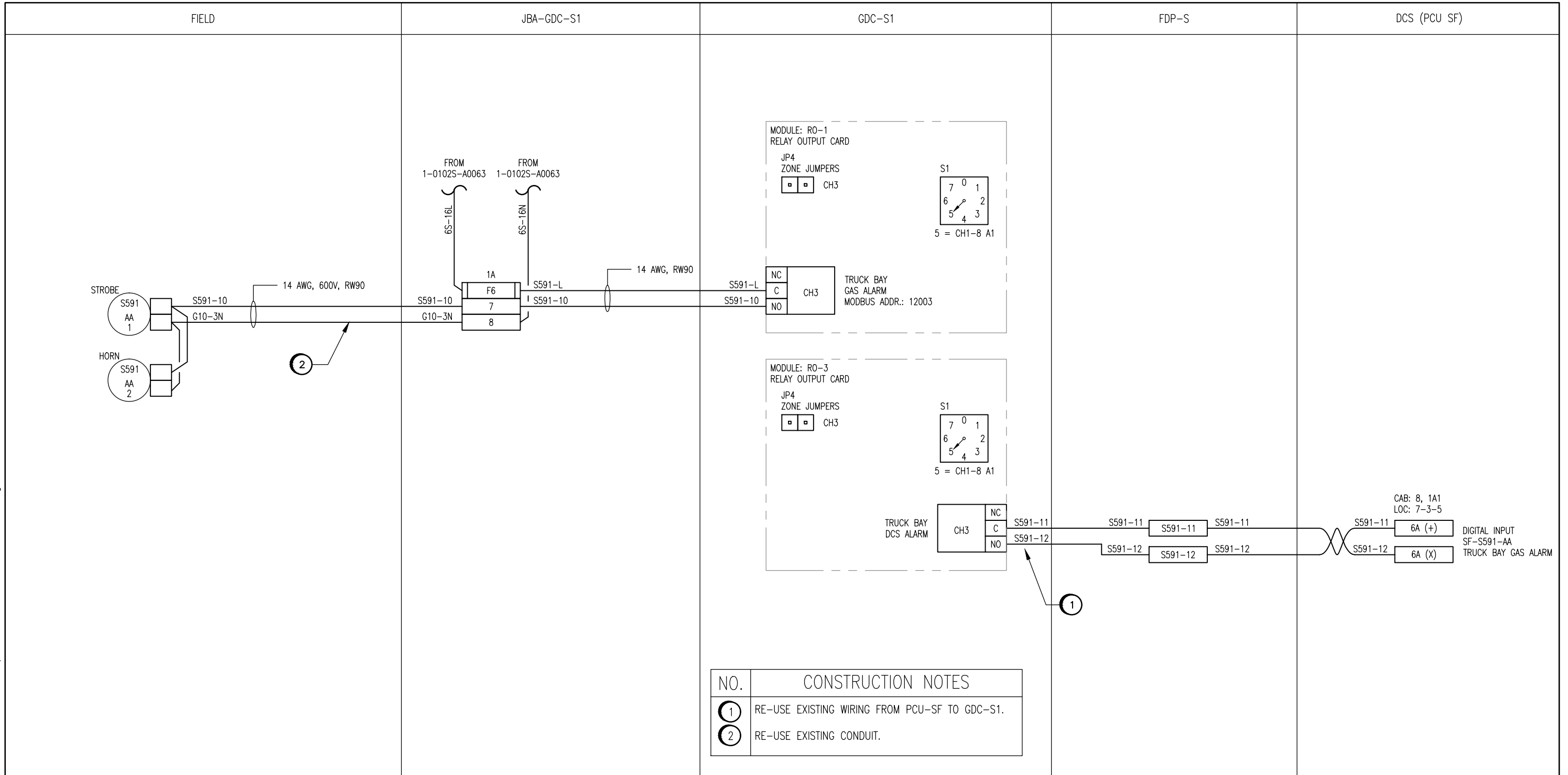


B SIZE - 279mm x 432mm

LAST SAVE: 2011/03/29 - 12:48pm
 PATH: M:\112577\0106\4ENG\48&C\DD - General DWG\1-0102S-A0064-001-00.dwg



NO.	CONSTRUCTION NOTES
1	RE-USE EXISTING WIRING FROM PCU-SF TO GDC-S1.
2	RE-USE EXISTING CONDUIT.



SNC-LAVALIN INC.
 148 Nature Park Way
 Winnipeg, MB, Canada R3P 0X7
 204-786-8080

NO.	REVISIONS	DATE	DESIGN	CHECK
00	ISSUED FOR TENDER, BID OPP. 209-2011	2011/03/11	TMC	CJR

DESIGNED BY: T. CHURCH	CHECKED BY: C. REIMER
DRAWN BY: S. COATES	APPROVED BY: C. REIMER
SCALE: N.T.S.	DATE: 2009/12/22
RELEASED FOR CONSTRUCTION	
BY: N. HARRINGTON	DATE: 2011/03/11
CONSULTANT NO.: 112577-0106-48DD-1608	

ENGINEER'S SEAL
 ORIGINAL DRAWING
 SEALED BY:
 T. M. CHURCH
 SNC-LAVALIN
 2011/03/25
 REV. 00

THE CITY OF WINNIPEG
 WATER AND WASTE DEPARTMENT

SOUTH END WATER POLLUTION CONTROL CENTRE
 ESSENTIAL SYSTEM UPGRADES
 INSTRUMENT LOOP DIAGRAM
 S591 TRUCK BAY GAS ALARM

CITY DRAWING NUMBER	SHEET	REV.	SIZE
1-0102S-A0064	001	00	B