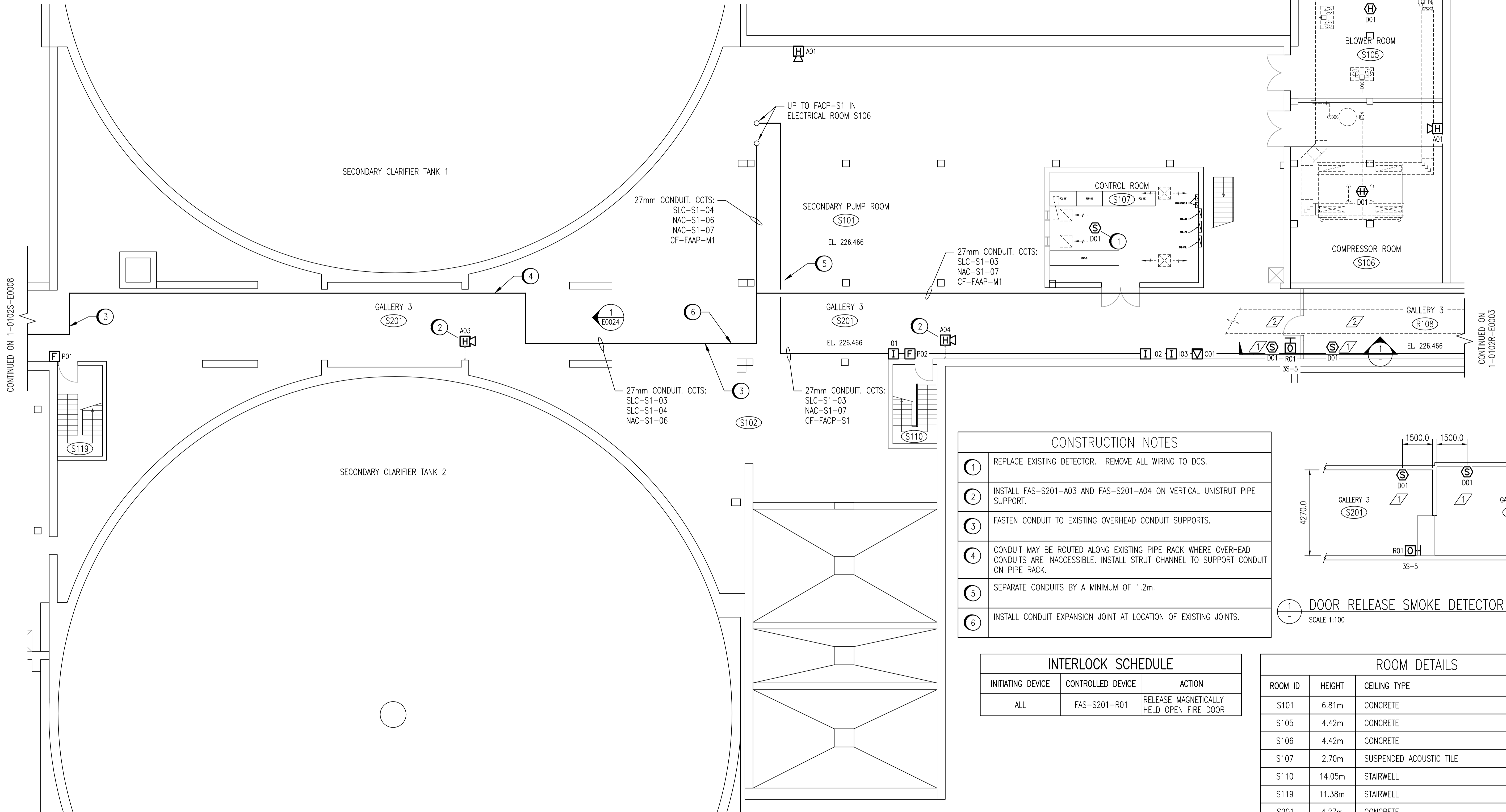
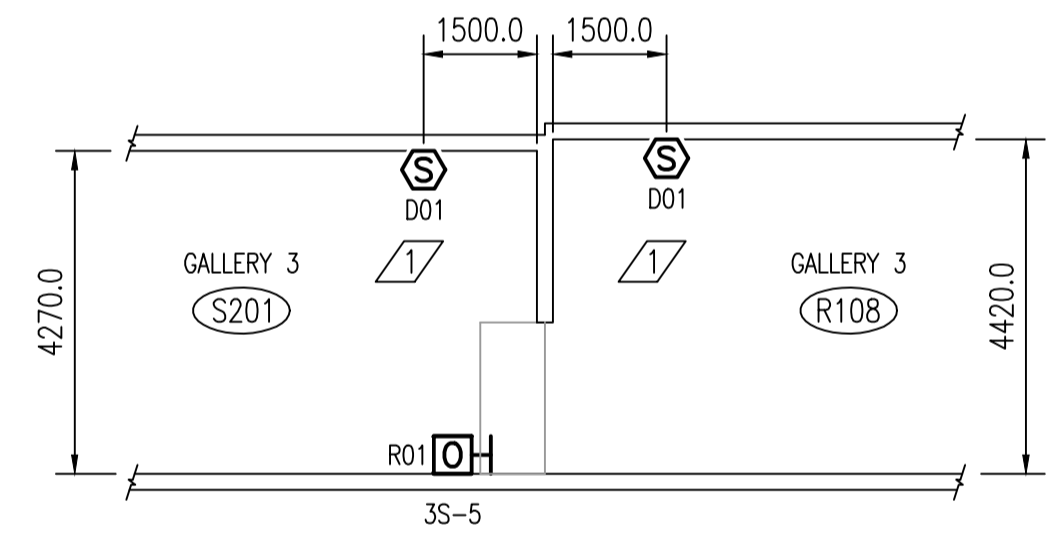


DESIGN INTENT NOTES	
1	FAS-S201-D01 AND FAS-R108-D01 ARE INTENDED TO ACTIVATE DOOR RELEASE FAS-S201-R01 IN THE EVENT OF A FIRE.
2	THE OVERHEAD ELECTRICAL SUPPORTS, INCLUDING THE BUS DUCT AND LIGHT FIXTURES IN GALLERY 3 PREVENTS PLACEMENT OF DETECTORS ALONG THE CENTER OF THE GALLERY.



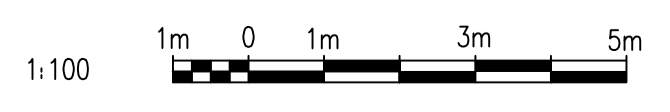
CONSTRUCTION NOTES	
1	REPLACE EXISTING DETECTOR. REMOVE ALL WIRING TO DCS.
2	INSTALL FAS-S201-A03 AND FAS-S201-A04 ON VERTICAL UNISTRUT PIPE SUPPORT.
3	FASTEN CONDUIT TO EXISTING OVERHEAD CONDUIT SUPPORTS.
4	CONDUIT MAY BE ROUTED ALONG EXISTING PIPE RACK WHERE OVERHEAD CONDUITS ARE INACCESSIBLE. INSTALL STRUT CHANNEL TO SUPPORT CONDUIT ON PIPE RACK.
5	SEPARATE CONDUITS BY A MINIMUM OF 1.2m.
6	INSTALL CONDUIT EXPANSION JOINT AT LOCATION OF EXISTING JOINTS.



INTERLOCK SCHEDULE		
INITIATING DEVICE	CONTROLLED DEVICE	ACTION
ALL	FAS-S201-R01	RELEASE MAGNETICALLY HELD OPEN FIRE DOOR

ROOM DETAILS			
ROOM ID	HEIGHT	CEILING TYPE	REF DWG
S101	6.81m	CONCRETE	SEP-425
S105	4.42m	CONCRETE	SEP-072
S106	4.42m	CONCRETE	SEP-072
S107	2.70m	SUSPENDED ACOUSTIC TILE	SEP-442
S110	14.05m	STAIRWELL	SEP-461
S119	11.38m	STAIRWELL	SEP-085
S201	4.27m	CONCRETE	SEP-425

- NOTES:
- DEVICE TAGS ARE SHOWN IN SHORTHAND NOTATION. FULL DEVICE TAG FORMAT IS FAS-Sxxx-yyy, WHERE xxx IS THE ROOM NUMBER, AND yyy IS THE DEVICE IDENTIFIER.
  - MAINTAIN A MINIMUM SPACING BETWEEN FAS MAIN CONDUITS OF AT LEAST 1200mm WHEN TRAVELING HORIZONTALLY AND 300mm WHEN TRAVELING VERTICALLY.



NO.	REVISIONS	DATE	DESIGN	CHECK
00	ISSUED FOR TENDER, BID OPP. 209-2011	2011/03/11	EFB	CJR

**SNC-LAVALIN INC.**  
148 Nature Park Way  
Winnipeg, MB, Canada R3P 0X7  
204-786-8080

DESIGNED BY: E. BOHNCKE  
CHECKED BY: C. REIMER  
DRAWN BY: E. BOHNCKE  
APPROVED BY: C. REIMER  
SCALE: 1:100  
RELEASED FOR CONSTRUCTION BY: N. HARRINGTON  
DATE: 2009/03/20  
DATE: 2011/03/11  
CONSULTANT NO.: 112577-0101-47DD-0064

ENGINEER'S SEAL  
ORIGINAL DRAWING SEALED BY:  
C. J. REIMER  
SNC-LAVALIN MEMBER #21968  
2011/03/25 REV. 00

**THE CITY OF WINNIPEG**  
WATER AND WASTE DEPARTMENT

SOUTH END WATER POLLUTION CONTROL CENTRE  
FIRE ALARM UPGRADE  
PLAN LAYOUT  
FIRE ALARM - SECONDARY CLARIFIERS  
CLARIFIERS 1 & 2 LOWER LEVEL

CITY DRAWING NUMBER: 1-0102S-E0006  
SHEET: 001  
REV: 00  
SIZE: A1

SEP-461  
1-0102S-E0018  
1-0102A-E0001

REACTOR & SLUDGE THICKENING LIGHTING & RECEPTACLES  
ELECTRICAL CLASSIFICATION PLAN  
FIRE ALARM LEGEND AND DETAILS

DRAWING NUMBER: 1-0102S-E0008  
REFERENCE DRAWINGS