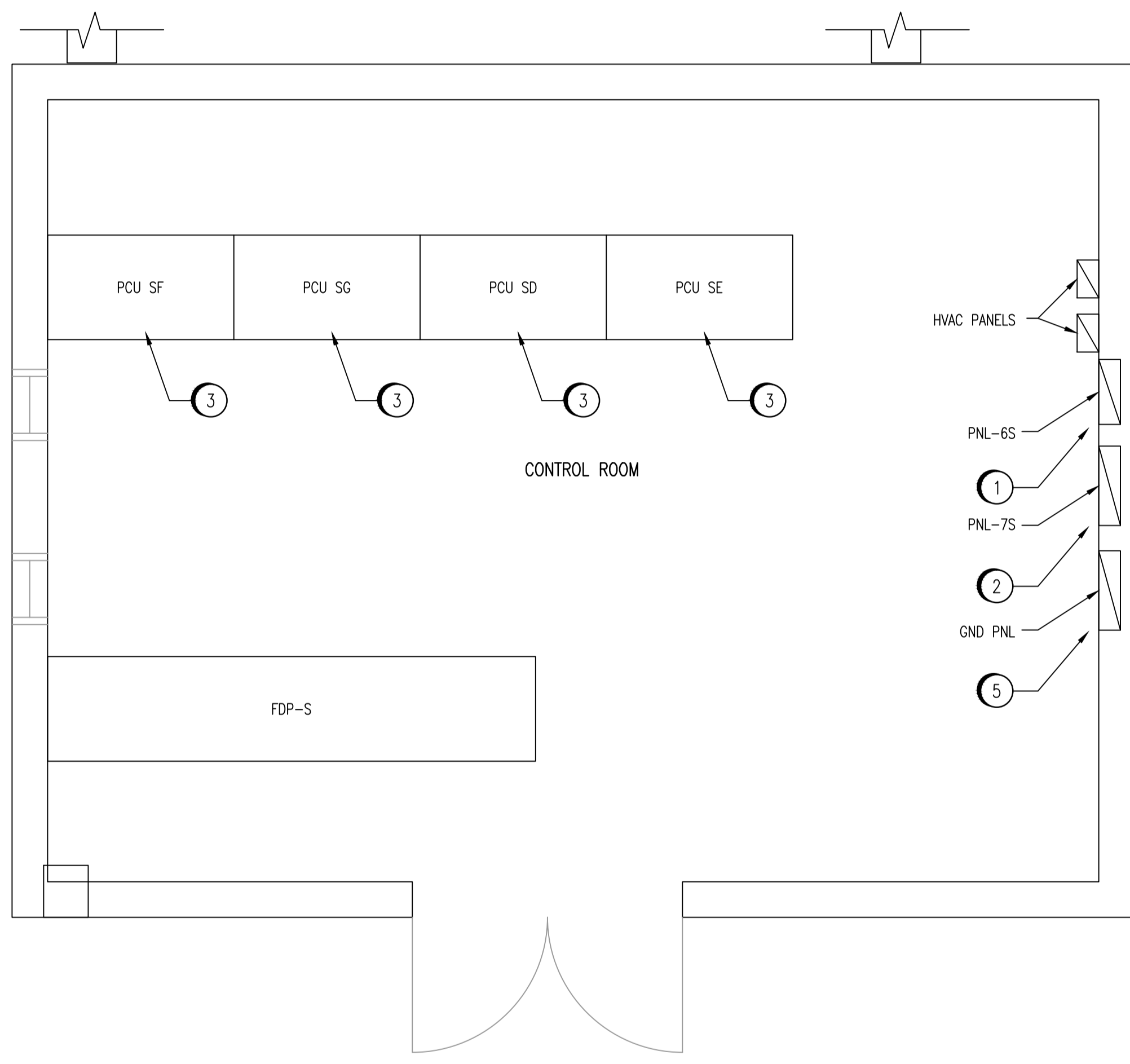
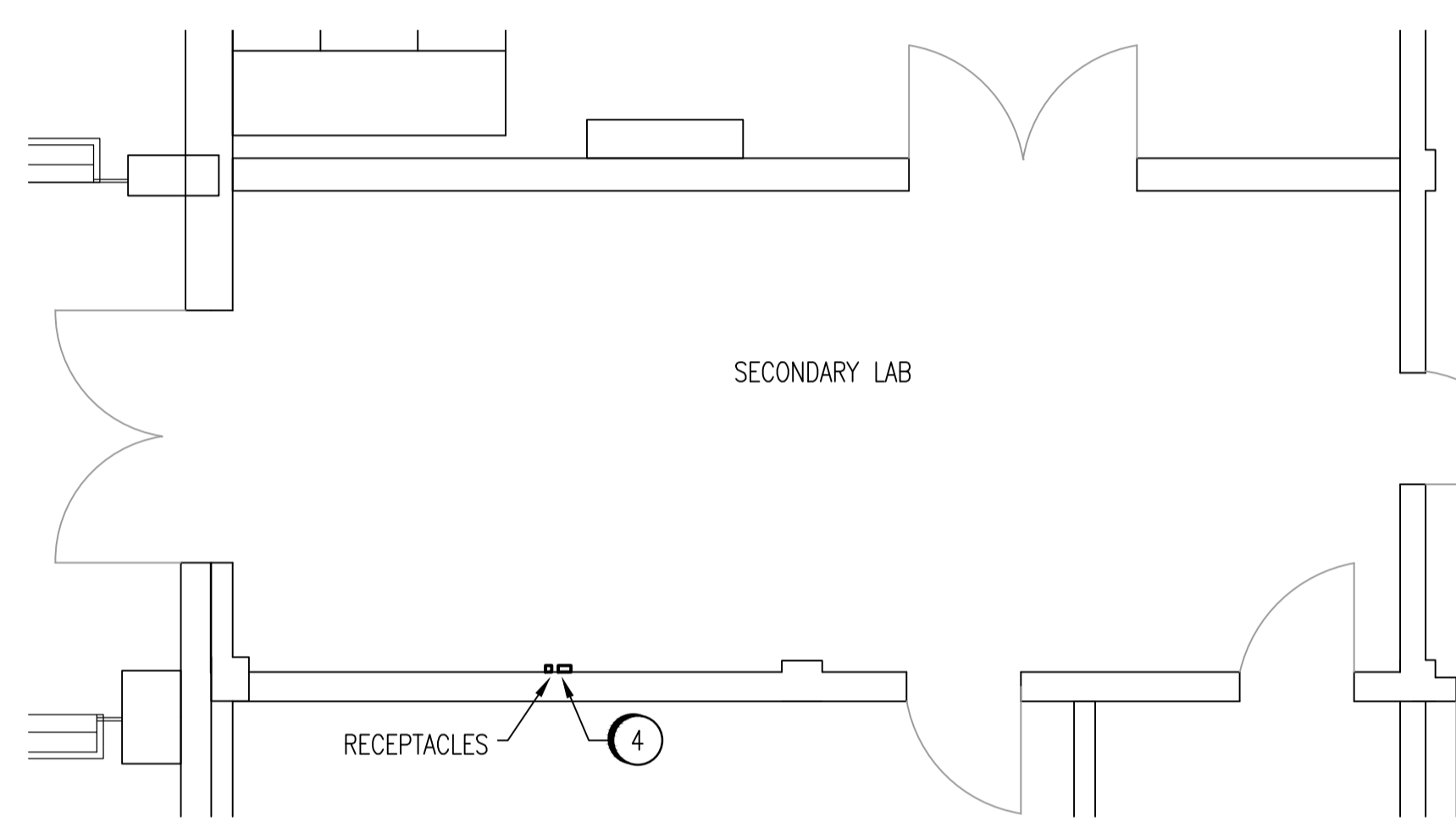


KEYPLAN - LOWER LEVEL



SECONDARY CLARIFIER CONTROL ROOM
1:30



SECONDARY LAB
1:50

NO.	CONSTRUCTION NOTES
1	RE-FEED PNL-6S FROM UPS-S1. MOVE LOADS FROM PNL-7S TO PNL-6S AS REQUIRED.
2	FEED PNL-7S FROM XFMR-7S.
3	FEED PCU FROM PNL-6S. CONNECT MAIN POWER INPUT TO CIRCUIT FROM PNL-6S. CONNECT AUX. POWER INPUT TO CIRCUIT FROM PNL-7S.
4	INSTALL QUAD RECEPTACLE IN SECONDARY LAB FROM PNL-6S, CCT. 11 FOR OIS WORKSTATION. INSTALL DUPLEX RECEPTACLE IN SECONDARY LAB FROM PNL-6S, CCT. 12 FOR ADMIN. WORKSTATION. COORDINATE WITH CITY PERSONNEL FOR REMOVAL OF EXISTING UPS.
5	CONNECT UPS GROUND TO PLANT GROUND SIDE OF GROUND PANEL.

NOTES:
1. THIS DRAWING IS BASED ON THE EXISTING LAYOUT OF THE CONTROL ROOM.



NO.	REVISIONS	DATE	DESIGN	CHECK
00	ISSUED FOR TENDER, BID OPP. 209-2011	2011/03/11	TMC	CJR

SNC-LAVALIN INC.
148 Nature Park Way
Winnipeg, MB, Canada R3P 0X7
204-786-8080

DESIGNED BY: EXISTING
DRAWN BY: S. COATES
SCALE: 1:30
DATE: 2007/08/23
CONSULTANT NO.: 112577-0106-47DD-0602

CHECKED BY: C. REIMER
APPROVED BY: C. REIMER
RELEASED FOR CONSTRUCTION BY: N. HARRINGTON
DATE: 2011/03/11

ENGINEER'S SEAL
ORIGINAL DRAWING
SEALED BY:
T. M. CHURCH
SNC-LAVALIN
MEMBER #32682
2011/03/25
REV. 00

THE CITY OF WINNIPEG
WATER AND WASTE DEPARTMENT

SOUTH END WATER POLLUTION CONTROL CENTRE
ESSENTIAL SYSTEM UPGRADES
PLAN LAYOUT
SECONDARY CLARIFIER CONTROL ROOM

CITY DRAWING NUMBER: 1-0102S-E0011
SHEET: 001
REV.: 00
SIZE: D

DRAWING NUMBER	REFERENCE DRAWINGS
----------------	--------------------