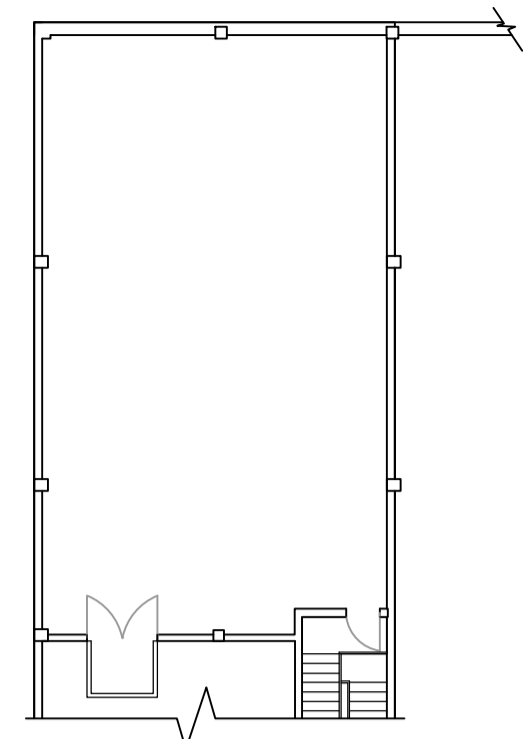


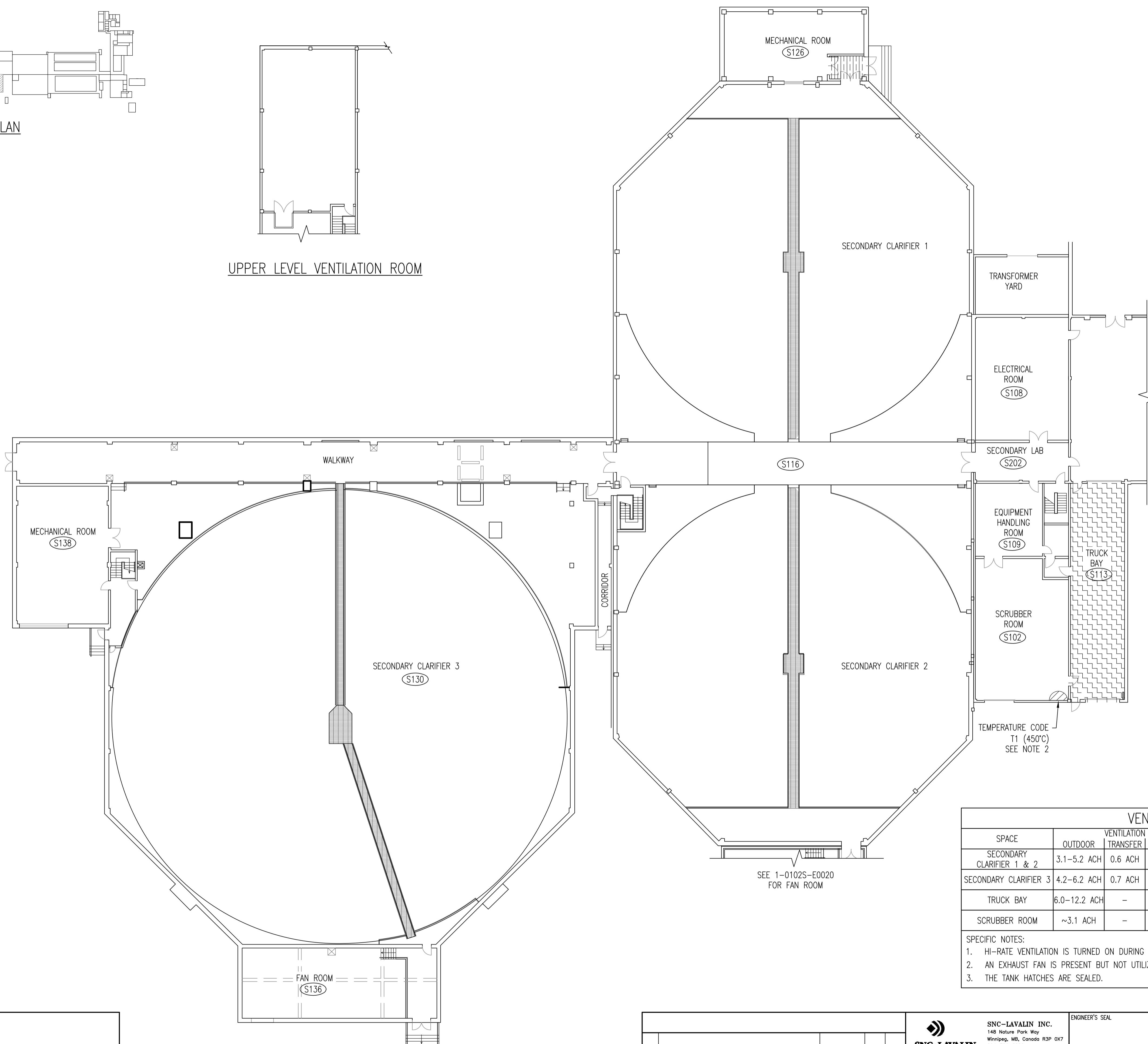
KEYPLAN



UPPER LEVEL VENTILATION ROOM

LEGEND

	HAZARDOUS CLASS 1, ZONE 1, GROUP IIA
	HAZARDOUS CLASS 1, ZONE 2, GROUP IIA
	CATEGORY 1 (MOISTURE)
	CATEGORY 2 (CORROSIVE)
	CATEGORY 2 WET (MOISTURE & CORROSIVE)



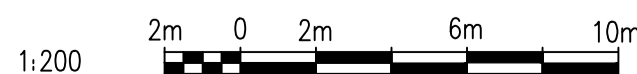
VENTILATION ANALYSIS

SPACE	OUTDOOR	VENTILATION TRANSFER	RETURN	PRESSURE	HEATED	VENT FAILURE DETECTION	NOTES
SECONDARY CLARIFIER 1 & 2	3.1-5.2 ACH	0.6 ACH	-	NEGATIVE	YES	YES	
SECONDARY CLARIFIER 3	4.2-6.2 ACH	0.7 ACH	-	NEGATIVE	YES	YES	
TRUCK BAY	6.0-12.2 ACH	-	-	NEGATIVE	YES	YES	1
SCRUBBER ROOM	~3.1 ACH	-	-	POSITIVE	YES	YES	2, 3

SPECIFIC NOTES:

- HI-RATE VENTILATION IS TURNED ON DURING SLUDGE LOADING.
- AN EXHAUST FAN IS PRESENT BUT NOT UTILIZED TO MAINTAIN A POSITIVE PRESSURE IN THE SPACE.
- THE TANK HATCHES ARE SEALED.

- NOTES:**
- THE INDICATED VENTILATION RATES ARE BASED ON EXISTING DOCUMENTATION AND HAVE NOT BEEN VERIFIED VIA ONSITE TESTING.
 - AREAS WITHIN 0.9m OF THE SLUDGE TANK EXHAUST FAN S692-EF ARE TO BE CLASSIFIED AS A HAZARDOUS CLASS 1, ZONE 2 LOCATION.



APECM
Certificate of Authorization
SNC-Lavalin Inc.
No. 4489

NO.	REVISIONS	DATE	DESIGN	CHECK
00	ISSUED FOR TENDER, BID OPP. 209-2011	2011/03/31	TMC	CJR

SNC-LAVALIN INC.
148 Nature Park Way
Winnipeg, MB, Canada R3P 0X7
204-786-8080

DESIGNED BY: I. CHURCH
DRAWN BY: S. COATES
SCALE: 1:200
DATE: 2009/11/06

CHECKED BY: C. REIMER
APPROVED BY: C. REIMER
RELEASED FOR CONSTRUCTION BY: N. HARRINGTON
DATE: 2011/03/31

CONSULTANT NO.: 112577-0113-47DD-1601

ENGINEER'S SEAL

ORIGINAL DRAWING
SEALED BY:
C. J. REIMER
SNC-LAVALIN
MEMBER #21968
2011/03/31
REV. 00

THE CITY OF WINNIPEG
WATER AND WASTE DEPARTMENT

SOUTH END WATER POLLUTION CONTROL CENTRE
ELECTRICAL CLASSIFICATION UPGRADES
ELECTRICAL CLASSIFICATION PLAN
SECONDARY CLARIFIERS - MAIN LEVEL

CITY DRAWING NUMBER: 1-0102S-E0019
SHEET: 001
REV: 00
SIZE: A1