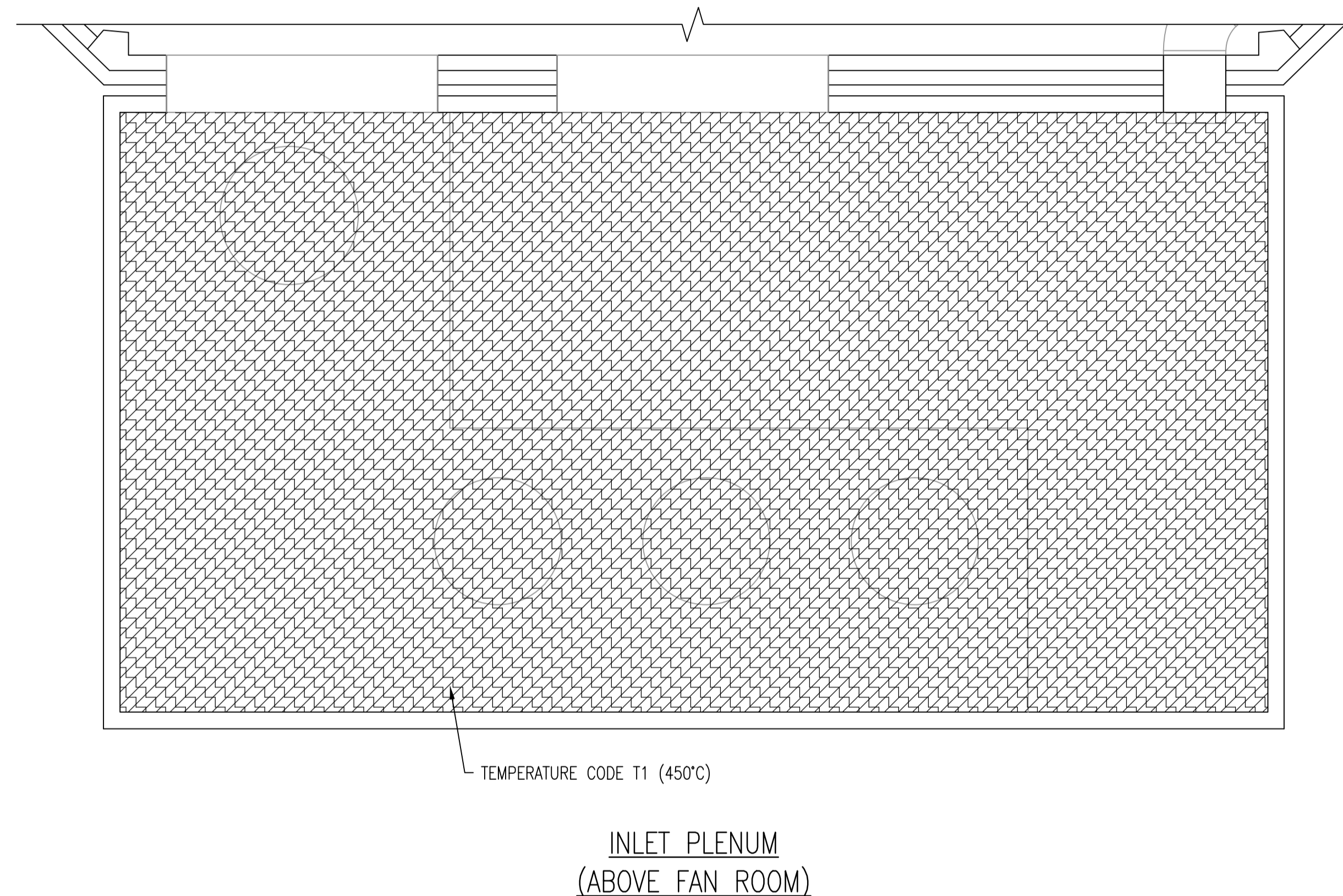
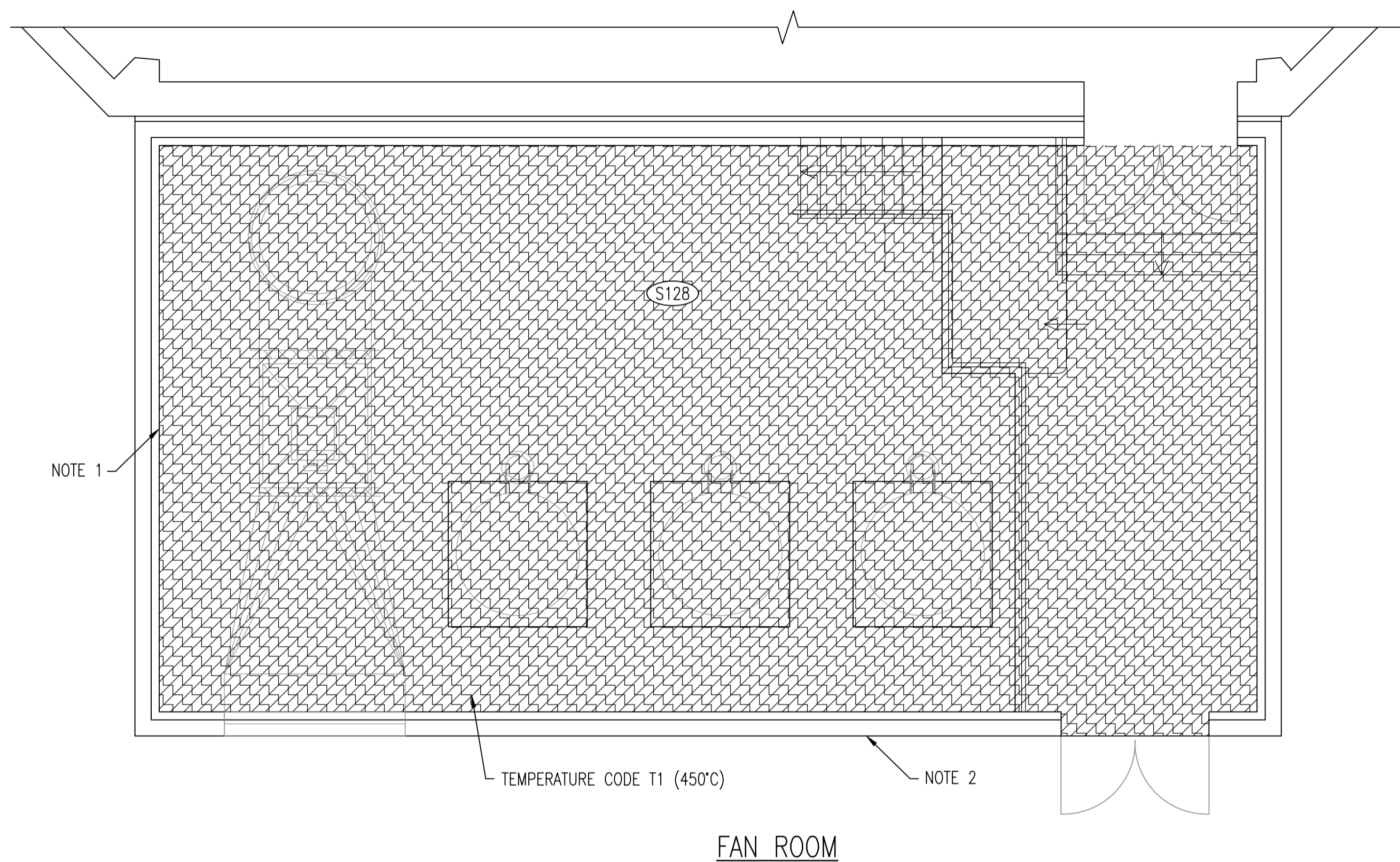


LEGEND

- HAZARDOUS CLASS I, ZONE 1, GROUP IIA
- HAZARDOUS CLASS I, ZONE 2, GROUP IIA
- CATEGORY 1 (MOISTURE)
- CATEGORY 2 (CORROSIVE)
- CATEGORY 2 WET (MOISTURE & CORROSIVE)



FAN ROOM

INLET PLENUM
(ABOVE FAN ROOM)

NOTE 1

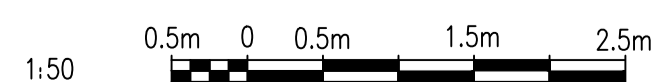
TEMPERATURE CODE T1 (450°C)

NOTE 2

TEMPERATURE CODE T1 (450°C)

NOTES:

1. AREAS WITHIN 0.9 METERS OF WET WELL EXHAUST FANS, ASSOCIATED DAMPERS AND UNSEALED DUCTWORK ARE TO BE CLASSIFIED AS ZONE 2 LOCATIONS.
2. THE INDICATED VENTILATION RATES ARE BASED ON EXISTING DOCUMENTATION AND HAVE NOT BEEN VERIFIED VIA ONSITE TESTING.
3. THE EXISTING EQUIPMENT IN THE SPACE MAY NOT BE APPROPRIATELY RATED. HOWEVER, ALL NEW WORK IS TO BE RATED AS SHOWN ON THE DRAWING.



NO.	REVISIONS	DATE	DESIGN	CHECK
00	ISSUED FOR TENDER, BID OPP. 209-2011	2011/03/31	TMC	CJR

SNC-LAVALIN INC. 148 Nature Park Way Winnipeg, MB, Canada R3P 0X7 204-786-8080	
DESIGNED BY: I. CHURCH	CHECKED BY: C. REIMER
DRAWN BY: S. COATES	APPROVED BY: C. REIMER
SCALE: 1:50	RELEASED FOR CONSTRUCTION BY: N. HARRINGTON
DATE: 2009/11/06	DATE: 2011/03/31
CONSULTANT NO.: 112577-0113-47DD-1602	

ENGINEER'S SEAL

ORIGINAL DRAWING
SEALED BY:
C. J. REIMER
SNC-LAVALIN
MEMBER #21968
2011/03/31
REV. 00

THE CITY OF WINNIPEG
 WATER AND WASTE DEPARTMENT

 SOUTH END WATER POLLUTION CONTROL CENTRE
 ELECTRICAL CLASSIFICATION UPGRADES
 ELECTRICAL CLASSIFICATION PLAN
 SECONDARY CLARIFIER 2 FAN ROOM

 CITY DRAWING NUMBER: **1-0102S-E0020**

SHEET	REV.	SIZE
001	00	A1

DRAWING NUMBER	REFERENCE DRAWINGS
----------------	--------------------