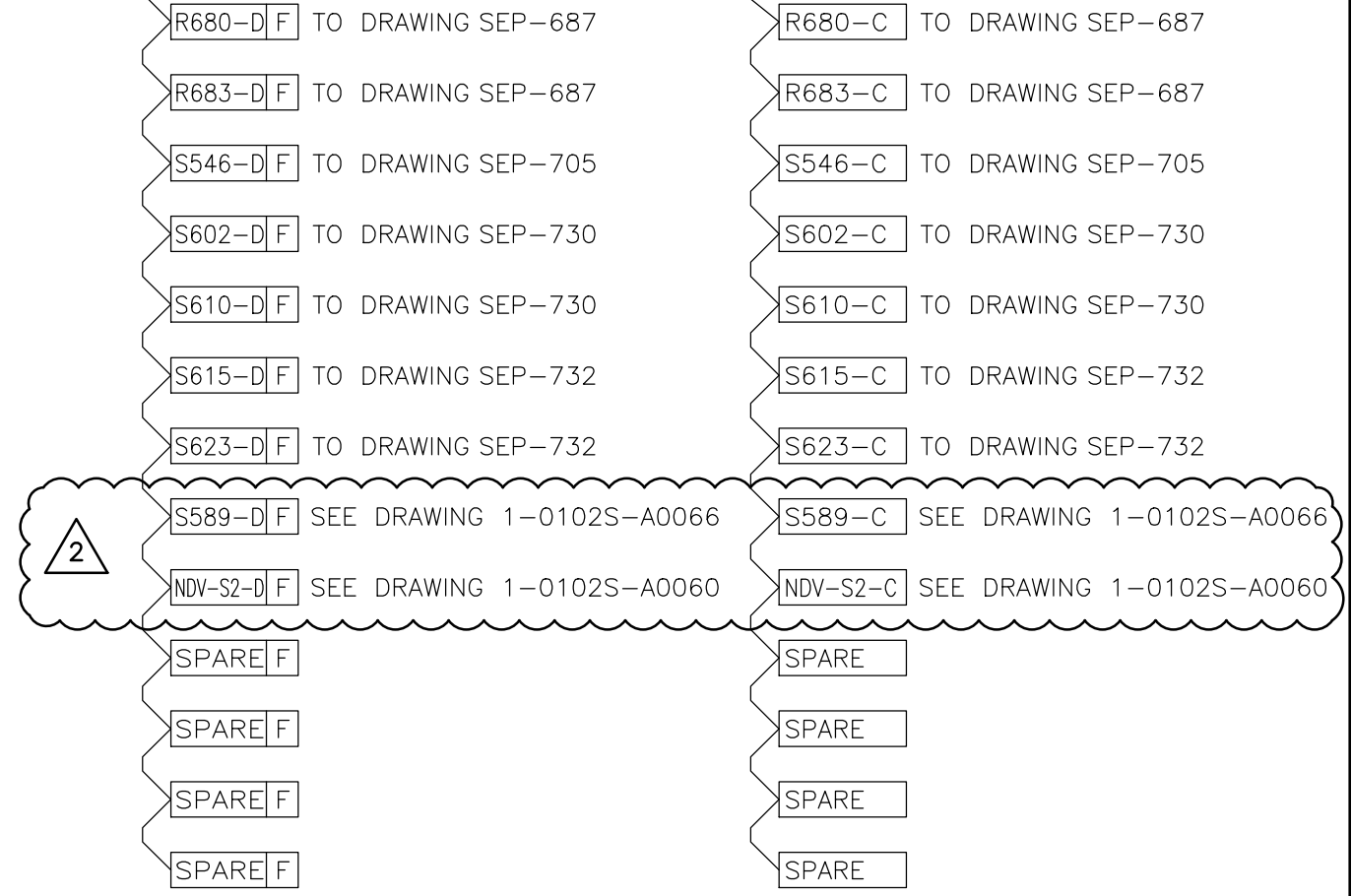
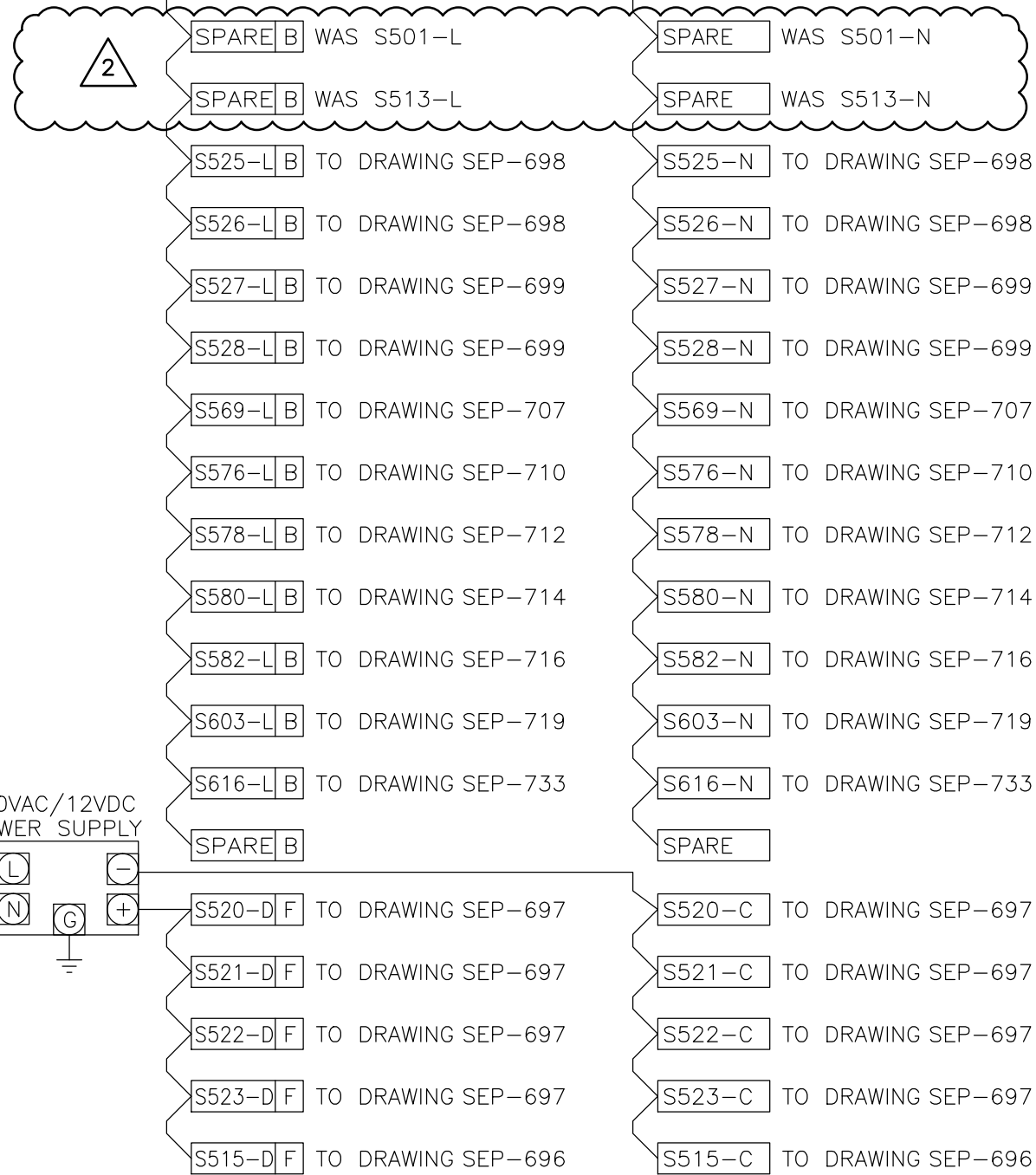


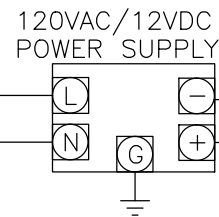
120 VAC DISTRIBUTION
CONTINUED FROM
DWG. SEP-772

24 VDC POWER CONTINUED (-)
FROM DWG. SEP-772

(+)



120VAC
DISTRIBUTION
CONTINUED FROM
DWG. SEP-772



		SNC-LAVALIN INC. 148 Nature Park Way Winnipeg, Manitoba Canada R3P 0X7	
DESIGNED:	T. CHURCH	APPROVED:	C. REIMER
CHECKED:	C. REIMER	DATE:	2011/03/11
PROJECT No.	SUBDIV.	SUBJECT	SERIAL
112577	0106	47 DD	1601
		REV.	2



NOTE:
ALL BREAKERS AND FUSES TO BE
1 AMP. UNLESS OTHERWISE NOTED.

MacLAREN ENGINEERS INC. WARDROP ENGINEERING INC. ENGINEERING CONSULTANTS			
2	UPS AND GAS DETECTION MODIFICATIONS	2011/03/11	TMC
1	AS CONSTRUCTED	11/93	B.T.
0	ISSUED FOR CONSTRUCTION	02/92	KJ
-	ISSUED FOR REVIEW	09/91	RH
NO.	REVISIONS	DATE	BY
		DATE: 09/91	

ORIGINAL DRAWING
SEALED BY:
T. M. CHURCH
SNC-LAVALIN
2011/03/25
REV. 02
CHANGES ONLY

CONSULTANT DWG. NO.
870012-01-22

THE CITY OF WINNIPEG WORKS AND OPERATIONS DIVISION WATERWORKS, WASTE & DISPOSAL DEPARTMENT	
SOUTH END WATER POLLUTION CONTROL CENTER SECONDARY CLARIFIER EXPANSION - I & C FIELD DEVICE PANEL FDP-S 120 VAC, 24 VDC & 12 VDC POWER DISTRIBUTION WIRING DIAGRAM	CITY DWG. NO. SHEET 1 OF 1 SEP-769