

MCC 1G & MCC 2G BREAKER CUBICLE							
UNIT No.	DESCRIPTION	FEEDER			CIRCUIT BREAKER		REMARKS
		CAP IN AMPS	SIZE	TYPE	VOLTS	FRAME SIZE	
1	TIE LUGS & CIRCUIT BREAKER	800A		LOW Z BUS DUCT	600V	800A	TYPE "RD" BREAKER, SEE NOTE 1
2	TIE LUGS & CIRCUIT BREAKER	800A		LOW Z BUS DUCT	600V	800A	TYPE "RD" BREAKER, SEE NOTE 1
3	MCC 1G METERING	-					SCHNEIDER PM820
4	MCC 2G METERING	-					SCHNEIDER PM820
5	TIE CIRCUIT BREAKER	800A			600V	800A	TYPE "RD" BREAKER, SEE NOTE 1
6	600V MAIN LUGS	800A		BUS BAR			TO MCC 1G
7	600V MAIN LUGS	800A		BUS BAR			TO MCC 2G

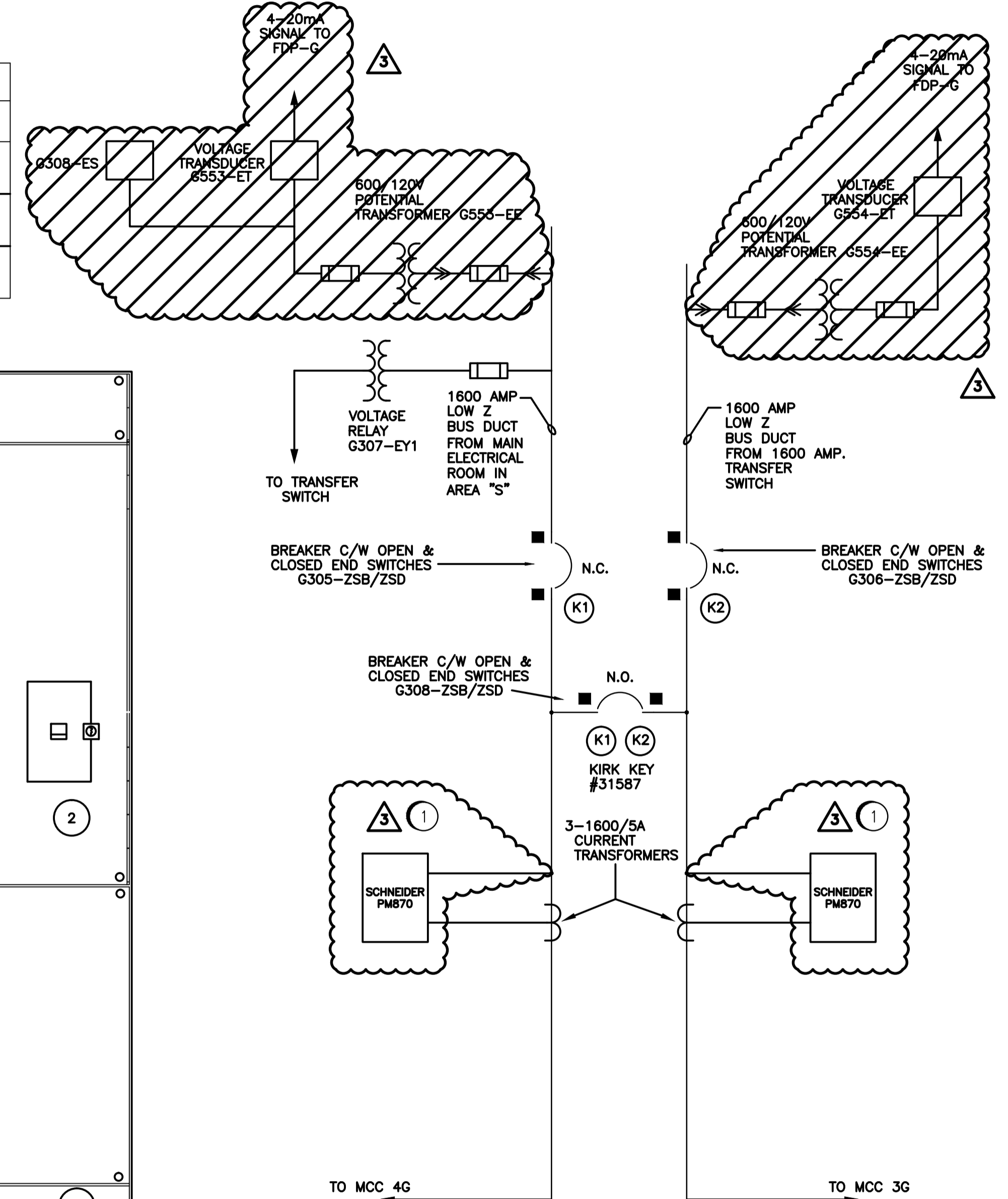
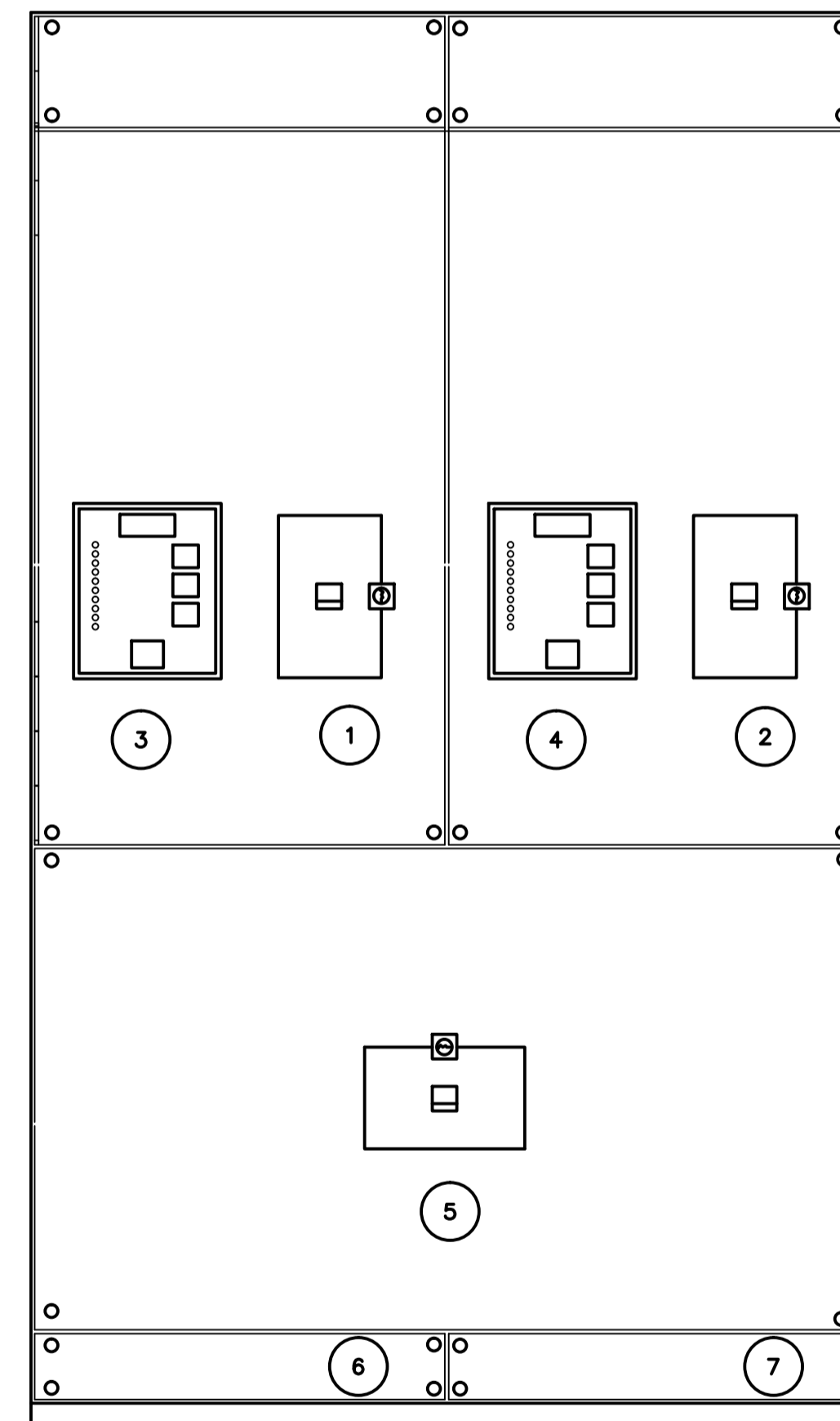
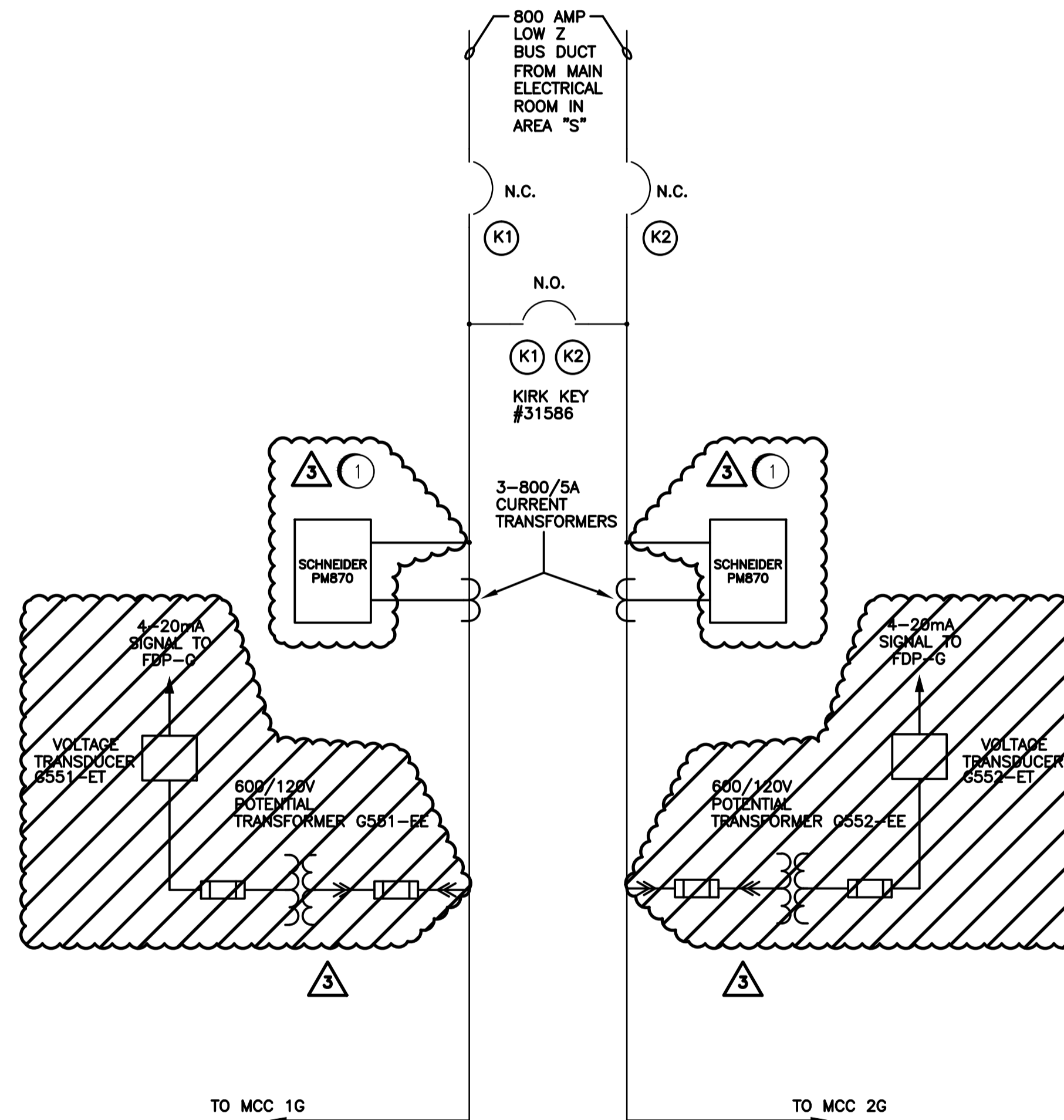
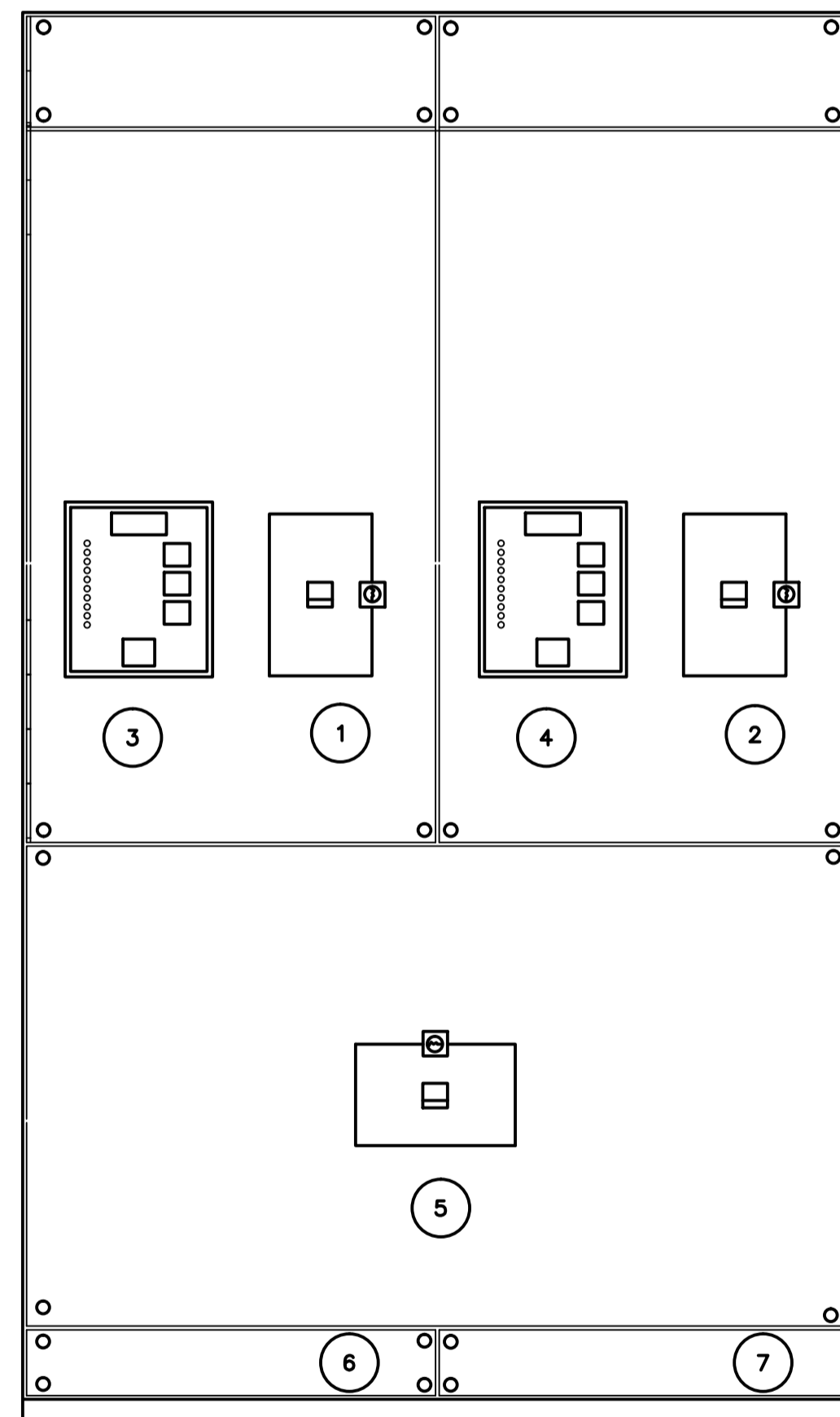
NOTES:  
1. RS SELTRONIC TRIP UNIT RS3160T. PLUG CAT #16RS08T. SHORT TIME P/U = 2IN

MCC 3G & MCC 4G BREAKER CUBICLE							
UNIT No.	DESCRIPTION	FEEDER			CIRCUIT BREAKER		REMARKS
		CAP IN AMPS	SIZE	TYPE	VOLTS	FRAME SIZE	
1	TIE LUGS & CIRCUIT BREAKER	1600A		LOW Z BUS DUCT	600V	1600A	TYPE "RD" BREAKER, SEE NOTE 1
2	TIE LUGS & CIRCUIT BREAKER	1600A		LOW Z BUS DUCT	600V	1600A	TYPE "RD" BREAKER, SEE NOTE 1
3	MCC 4G METERING	-					SCHNEIDER PM820
4	MCC 3G METERING	-					SCHNEIDER PM820
5	TIE CIRCUIT BREAKER	1600A			600V	1600A	TYPE "RD" BREAKER, SEE NOTE 1
6	600V MAIN LUGS	1600A		BUS BAR			TO MCC 4G
7	600V MAIN LUGS	1600A		BUS BAR			TO MCC 3G

NOTES:  
1. RS SELTRONIC TRIP UNIT RS31600T. PLUG CAT #16RS16T. SHORT TIME P/U = 2IN

600V KEY INTERLOCK SCHEDULE	
BREAKER UNIT No.	DESCRIPTION
1	KEY "K1" REMOVABLE ONLY WHEN N.C. BREAKER IS OPENED.
2	KEY "K2" REMOVABLE ONLY WHEN N.C. BREAKER IS OPENED.
5	N.O. BREAKER CAN ONLY BE CLOSED WHEN EITHER KEY "K1" OR "K2" IS INSERTED.

600V KEY INTERLOCK SCHEDULE	
BREAKER UNIT No.	DESCRIPTION
1	KEY "K1" REMOVABLE ONLY WHEN N.C. BREAKER IS OPENED.
2	KEY "K2" REMOVABLE ONLY WHEN N.C. BREAKER IS OPENED.
5	N.O. BREAKER CAN ONLY BE CLOSED WHEN EITHER KEY "K1" OR "K2" IS INSERTED.



MCC 1G & MCC 2G SWITCHGEAR—FRONT ELEVATION

MCC 1G & MCC 2G SWITCHGEAR—INTERNAL CONNECTIONS

MCC 3G & MCC 4G SWITCHGEAR—FRONT ELEVATION

MCC 3G & MCC 4G SWITCHGEAR—INTERNAL CONNECTIONS

NO.	CONSTRUCTION NOTES
1	REPLACE EXISTING IQ DATA PLUS METER WITH NEW NETWORK ENABLED METER.



SNC-LAVALIN INC. 148 Nations Park Way Winnipeg, Manitoba Canada R3P 0X7	
DESIGNED BY: T. CHURCH	APPROVED BY: C. REIMER
CHECKED BY: C. REIMER	DATE: 2011/03/11
PROJECT No. 112577	SUBJ. 0105
SERIAL 47	REV. DD
0109	3

NO.	REVISIONS	DATE	BY
3	MODIFIED POWER METERS	2011/03/11	TMC
2	ADDED UNDERVOLTAGE PROT. TO MCC-1G & MCC-2G	12/09	NB
1	AS CONSTRUCTED	08/93	B.T.
0	ISSUED FOR TENDER	12/91	B.T.
-	ISSUED FOR CITY REVIEW	05/91	B.T.

MACLAREN ENGINEERS INC.  
WARDROP ENGINEERING INC.  
ENGINEERING CONSULTANTS

DESIGNED BY: B.T.  
CHECKED BY:  
DRAWN BY: N.B.  
APPROVED BY:  
HOR. SCALE: N.T.S.  
VERTICAL:  
DATE: OCTOBER 1990

ENGINEER'S SEAL  
ORIGINAL DRAWING  
SEALED BY:  
T. M. CHURCH  
SNC-LAVALIN  
MEMBER #32682  
2011/03/28  
REV. 03  
CHANGES ONLY

CONSULTANT DRAWING NO. 870012-01-20-G-E111

THE CITY OF WINNIPEG  
WORKS AND OPERATIONS DIVISION  
WATERWORKS, WASTE & DISPOSAL DEPARTMENT

SOUTH END WATER POLLUTION CONTROL CENTRE  
PUMP & SCREEN BUILDING - ELECTRICAL  
MCC 1G & 2G AND  
MCC 3G & 4G  
DISTRIBUTION SECTION SCHEDULES

CITY DRAWING NUMBER  
SHEET OF  
SEP-832