

WATERMAIN RENEWAL BY WATER & WASTE DEPT. PRIOR TO PAVEMENT RECONSTRUCTION
ALL JOINT SPACING 5M UNLESS OTHERWISE NOTED

WARNING
IF POWER EQUIPMENT OR EXPLOSIVES ARE TO BE USED FOR EXCAVATION ON THIS PROJECT THE CONTRACTOR MUST:
1) OBTAIN CLEARANCE FROM THE GAS UTILITY PRIOR TO EXCAVATION.
2) TAKE PRECAUTION TO AVOID DAMAGE TO GAS UTILITY INSTALLATIONS.
SEE PROVINCIAL REGULATION 210/72 FOR DETAILS

METRIC
WHOLE NUMBERS INDICATE MILLIMETRES
DECIMALIZED NUMBERS INDICATE METRES

BID OPPORTUNITY NO. 21-2011

⊕	HYDRANT	◆	---	LDS/WWS	---	---	NORTH GUTTER	---
⊗	VALVE	●	---	WATERMAIN	---	---	CENTER LINE	---
⊠	CURB STOP	⊠	---	GAS	---	---	GUTTER	---
▭	CONCRETE	▭	---	TRAFFIC SIGNALS	---	---	NORTH PROPERTY	---
○	O.L.S.	●	---	ASPHALT	---	---	SOUTH PROPERTY	---
○	MANHOLE	●	---	CURB RENEWAL	---	---		---
□	CATCH BASIN	■	231.000	ELEVATIONS	231.000			
△	CURB INLET	▲	---	PROPERTY LINE	---			
☆	HYDRO POLE	+	---	SURVEY BAR	---			
⊙	TRAFFIC SIGNAL POLE	⊙	---	GEODEIC BENCH MARK	---			
---	EXISTING	---	---	RAMP CURB	---			
---	LEGEND - PLAN	---	---	LEGEND - PLAN	---	---	LEGEND - PROFILE	---

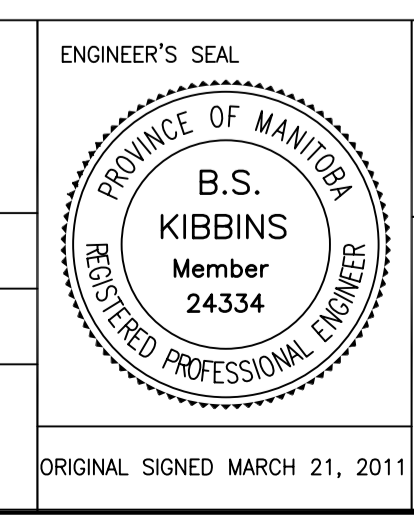
LOCATION APPROVED UNDERGROUND STRUCTURES
SUPR. U/G STRUCTURES DATE
NOTE:
LOCATION OF UNDERGROUND STRUCTURES AS SHOWN ARE BASED ON THE BEST INFORMATION AVAILABLE. BUT NO GUARANTEE IS GIVEN THAT ALL EXISTING UTILITIES ARE SHOWN OR THAT THE GIVEN LOCATIONS ARE EXACT. CONFIRMATION OF EXISTENCE AND EXACT LOCATION OF ALL SERVICES MUST BE OBTAINED FROM THE INDIVIDUAL UTILITIES BEFORE PROCEEDING WITH CONSTRUCTION.

B.M. ELEV.	GBM 28-019
	231.585
1	ISSUED FOR CONSTRUCTION
NO.	REVISIONS
	MAR 21
	DATE
	BY

ENGINEERING DIVISION
TECHNOLOGY SERVICES BRANCH
106 - 1155 PACIFIC AVE

DESIGNED BY J.C.
CHECKED BY D.T. / C.T.
DRAWN BY J.C.
APPROVED BY S.P.

HOR. SCALE: 1 : 250
VERTICAL: 1 : 10
DATE 2011/03/21



THE CITY OF WINNIPEG
PUBLIC WORKS DEPARTMENT

MONCTON AVENUE
FROM BESANT STREET TO LOUELDA STREET
CONCRETE PAVEMENT RECONSTRUCTION AND ASSOCIATED WORKS
FROM STA. 3+50 TO STA. 4+10

CITY DRAWING NUMBER SE-11-03
SHEET 3 OF 04
3