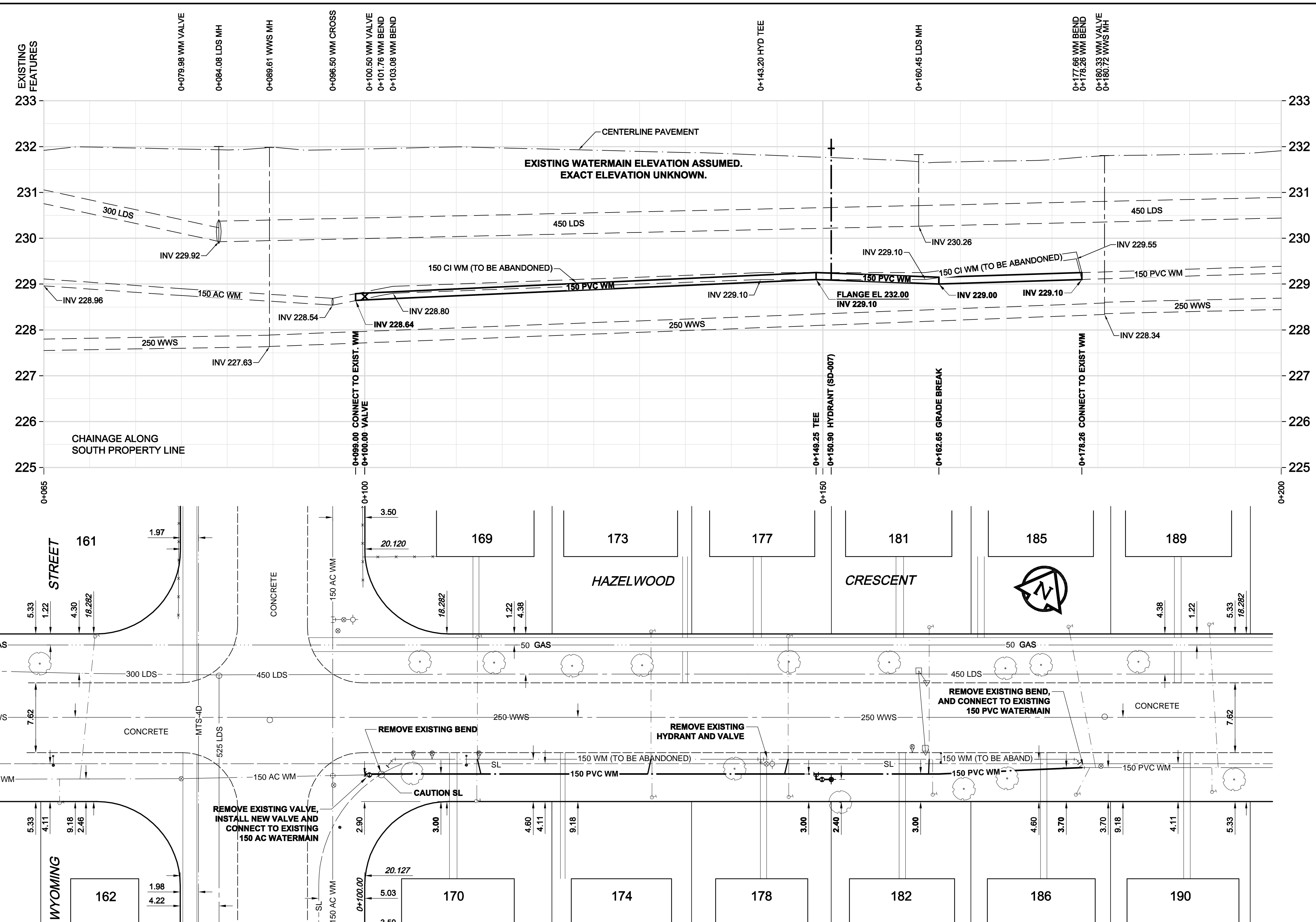


D SIZE 22" x 34" (559mm x 864mm)

PLOT: 11/04/07 12:35:41 PM

AECOM REVIEW DRFT CHK  
AECOM FILE NAME: 60189122-01-C-103-RDX.dwg Saved By: locosteg



**WARNING**

IF POWER EQUIPMENT OR EXPLOSIVES ARE TO BE USED FOR EXCAVATION ON THIS PROJECT, THE CONTRACTOR MUST NOTIFY THE GAS COMPANY OF THE PROPOSED LOCATION OF EXCAVATION. TAKE PRECAUTION TO AVOID DAMAGE TO GAS COMPANY INSTALLATIONS. SEE PROVINCIAL REGULATION 140/92 FOR DETAILS

**CONSTRUCTION NOTES:**

1. EXPOSE WATERMAIN CONNECTIONS AND CONFIRM INVERTS PRIOR TO CONSTRUCTION
2. INSTALL WATERMAIN BY TRENCHLESS METHODS.
3. ALL MATERIALS SHALL CONFORM TO THE CITY OF WINNIPEG STANDARD CONSTRUCTION SPECIFICATIONS.
4. MINIMUM COVER TO TOP OF PROPOSED WATERMAIN SHALL BE 2.5m FROM STREET CENTERLINE
5. INSTALL ALL HYDRANTS WITH FLANGE ELEVATION 50mm TO 150mm ABOVE FINISHED GRADE.
6. REPLACE ALL EXISTING LEAD SERVICES FROM THE PROPOSED WATERMAIN TO PROPERTY LINE.
7. NOTIFY ALL AFFECTED RESIDENTS AND BUSINESSES 24 HOURS IN ADVANCE OF ANY WATER SHUTDOWN OR DISRUPTION OF SERVICE.
8. LOCATION OF WATER SERVICES SHOWN ON DRAWINGS ARE APPROXIMATE. THE CONTRACTOR SHALL FIELD LOCATE ALL WATER SERVICES PRIOR TO CONSTRUCTION.
9. BACKFILL UNDER OR WITHIN 1.0m OF PAVEMENTS, INCLUDING SIDEWALKS SHALL BE CLASS 3 BACKFILL EXCEPT AS NOTED. BACKFILL IN BOULEVARDS SHALL BE CLASS 5 BACKFILL.



ADDRESS	NATURE OF SERVICE	SIZE	MATERIAL	DISTANCE SC TO PROPERTY	POSITION OF SC (curb stop)	POSITION OF CC (corp)	COMMENTS:
169	HAZELWOOD RESIDENTIAL	3/4 in (19 mm)	COPPER	Long: (5.5 m) E	of WL BUILDING	Long: of	
170	HAZELWOOD RESIDENTIAL	3/4 in (19 mm)	COPPER	Short: (3.4 m) W	of EL BUILDING	Short: of	
173	HAZELWOOD RESIDENTIAL	3/4 in (19 mm)	COPPER	Short: (2.7 m) W	of EL BUILDING	Short: of	
174	HAZELWOOD RESIDENTIAL	3/4 in (19 mm)	COPPER	Short: (1.8 m) W	of EL BUILDING	Short: of	
177	HAZELWOOD RESIDENTIAL	3/4 in (19 mm)	COPPER	Long: (3.0 m) W	of EL BUILDING	Long: of	
178	HAZELWOOD RESIDENTIAL	3/4 in (19 mm)	COPPER	Short: (2.1 m) W	of EL BUILDING	Short: of	
181	HAZELWOOD RESIDENTIAL	3/4 in (19 mm)	COPPER	Long: (2.4 m) W	of EL BUILDING	Long: of	
182	HAZELWOOD RESIDENTIAL	3/4 in (19 mm)	COPPER	Short: (2.4 m) W	of EL BUILDING	Short: of	

**METRIC**  
WHOLE NUMBERS INDICATE MILLIMETRES  
DECIMALIZED NUMBERS INDICATE METRES



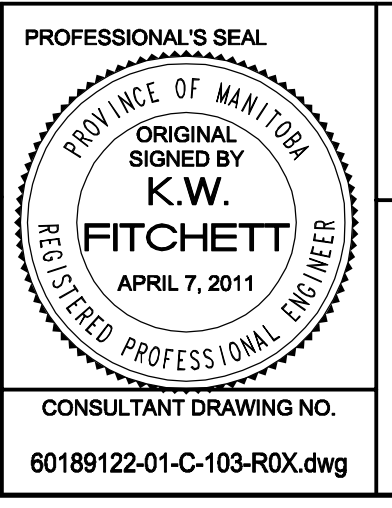
BID OPPORTUNITY NO. 260-2011

EXISTING	LEGEND - PLAN	NEW	EXISTING	LEGEND - PLAN	NEW	EXISTING	LEGEND - PROFILE	NEW
150 WM	WATERMAIN	150 WM	○	CURB STOP	+	150 WM	WATERMAIN	150 WM
HYDRANT VALVE	○	HYDRANT VALVE	+	REDUCER COUPLING	+	HYDRANT VALVE	○	HYDRANT VALVE
300 LDS LAND DRAINAGE SEWER	○	300 LDS LAND DRAINAGE SEWER	○	ANODE	○	300 LDS LAND DRAINAGE SEWER	○	300 LDS LAND DRAINAGE SEWER
250 WWS WASTE WATER SEWER	○	250 WWS WASTE WATER SEWER	○	HYDRO	○	250 WWS WASTE WATER SEWER	○	250 WWS WASTE WATER SEWER
MANHOLE	○	MANHOLE	○	MTS	○	MANHOLE	○	MANHOLE
CATCH BASIN	○	CATCH BASIN	○	GAS	○	CATCH BASIN	○	CATCH BASIN
CURB INLET	○	CURB INLET	○	TESTHOLE	○	CURB INLET	○	CURB INLET
CULVERT	○	CULVERT	○	LAMP STANDARD	○	CULVERT	○	CULVERT
PIPE ABANDONMENTS	○	PIPE ABANDONMENTS	○	TREE	○	PIPE ABANDONMENTS	○	PIPE ABANDONMENTS
SURVEY BAR	○	SURVEY BAR	○			SURVEY BAR	○	SURVEY BAR

**LOCATION APPROVED UNDERGROUND STRUCTURES**  
SUPR. U/G STRUCTURES DATE COMMITTEE  
NOTE: LOCATION OF UNDERGROUND STRUCTURES AS SHOWN ARE BASED ON THE BEST INFORMATION AVAILABLE. BUT NO GUARANTEE IS GIVEN THAT ALL EXISTING UTILITIES ARE SHOWN OR THAT THE GIVEN LOCATIONS ARE EXACT. CONFIRMATION OF EXISTENCE AND EXACT LOCATION OF ALL SERVICES MUST BE OBTAINED FROM THE INDIVIDUAL UTILITIES BEFORE PROCEEDING WITH CONSTRUCTION.

NO.	ISSUED FOR TENDER	DATE	BY
0	ISSUED FOR TENDER	11/04/06	GDL
A	ISSUED FOR REVIEW	11/03/22	JP
	REVISIONS	YYMMDD	BY

DESIGNED BY	GSK	CHECKED BY	FMI
DRAWN BY	JP	APPROVED BY	CCM
HOR. SCALE	1:250	RELEASED FOR CONSTRUCTION	KAS ZUREK
VERT. SCALE	1:50	DATE	2011/04/07



**THE CITY OF WINNIPEG WATER AND WASTE DEPARTMENT**  
2011 WATERMAIN RENEWALS CONTRACT 6  
HAZELWOOD CRESCENT WYOMING STREET TO 78m NORTH OF WYOMING STREET

SHEET 3 OF 10  
CITY DRAWING NUMBER D-12338 REV 0

CONSULTANT DRAWING NO. 60189122-01-C-103-RDX.dwg