

WARNING

IF POWER EQUIPMENT OR EXPLOSIVES ARE TO BE USED FOR EXCAVATION ON THIS PROJECT, THE CONTRACTOR MUST NOTIFY THE GAS COMPANY OF THE PROPOSED LOCATION OF EXCAVATION. TAKE PRECAUTION TO AVOID DAMAGE TO GAS COMPANY INSTALLATIONS. SEE PROVINCIAL REGULATION 140/92 FOR DETAILS

CONSTRUCTION NOTES:

1. EXPOSE WATERMAIN CONNECTIONS AND CONFIRM INVERTS PRIOR TO CONSTRUCTION
2. INSTALL WATERMAIN BY TRENCHLESS METHODS.
3. ALL MATERIALS SHALL CONFORM TO THE CITY OF WINNIPEG STANDARD CONSTRUCTION SPECIFICATIONS.
4. MINIMUM COVER TO TOP OF PROPOSED WATERMAIN SHALL BE 2.5m FROM STREET CENTERLINE
5. INSTALL ALL HYDRANTS WITH FLANGE ELEVATION 50mm TO 150mm ABOVE FINISHED GRADE.
6. REPLACE ALL EXISTING LEAD SERVICES FROM THE PROPOSED WATERMAIN TO PROPERTY LINE.
7. NOTIFY ALL AFFECTED RESIDENTS AND BUSINESSES 24 HOURS IN ADVANCE OF ANY WATER SHUTDOWN OR DISRUPTION OF SERVICE.
8. LOCATION OF WATER SERVICES SHOWN ON DRAWINGS ARE APPROXIMATE. THE CONTRACTOR SHALL FIELD LOCATE ALL WATER SERVICES PRIOR TO CONSTRUCTION.
9. BACKFILL UNDER OR WITHIN 1.0m OF PAVEMENTS, INCLUDING SIDEWALKS SHALL BE CLASS 3 BACKFILL EXCEPT AS NOTED. BACKFILL IN BOULEVARDS SHALL BE CLASS 5 BACKFILL.



| ADDRESS | NATURE OF SERVICE | SIZE | MATERIAL | DISTANCE SC TO PROPERTY | POSITION OF SC (curb stop) | POSITION OF CC (corp) | COMMENTS: |
|---------|----------------------|----------------|----------|-------------------------|---------------------------------|------------------------|---------------------------------------|
| 74 | WOODLAWN RESIDENTIAL | 3/4 in (19 mm) | COPPER | | Long: (5.5 m) E of WL BUILDING | Long: of of | |
| 75 | WOODLAWN COMMERCIAL | 2 in (50 mm) | COPPER | | Short: (0.3 m) W of EL BUILDING | Short: GPP of SC | |
| 75 | WOODLAWN SUMMER SERV | 3/4 in (19 mm) | COPPER | | Long: (0.0 m) E of WL BUILDING | Long: of of | RENEW TO PL PREVIOUSLY FROZEN SERVICE |
| 75 | WOODLAWN SUMMER SERV | 3/4 in (19 mm) | COPPER | | Short: (1.2 m) W of WL BUILDING | Short: of of | |
| 78 | WOODLAWN RESIDENTIAL | 3/4 in (19 mm) | COPPER | | Long: (7.6 m) E of WL BUILDING | Long: of of | |
| 78 | WOODLAWN RESIDENTIAL | 3/4 in (19 mm) | COPPER | | Short: (4.9 m) W of EL BUILDING | Short: (0.9 m) E of SC | |
| 82 | WOODLAWN RESIDENTIAL | 3/4 in (19 mm) | COPPER | | Long: (0.6 m) E of EL BUILDING | Short: OPP of SC | |
| 92 | WOODLAWN RESIDENTIAL | 3/4 in (19 mm) | COPPER | | Long: (9.0 m) W of EL BUILDING | Short: (0.9 m) W of SC | |
| 94 | WOODLAWN RESIDENTIAL | 3/4 in (19 mm) | COPPER | | Long: (1.2 m) W of EL BUILDING | Short: (1.5 m) E of SC | |

METRIC
WHOLE NUMBERS INDICATE MILLIMETRES
DECIMALIZED NUMBERS INDICATE METRES



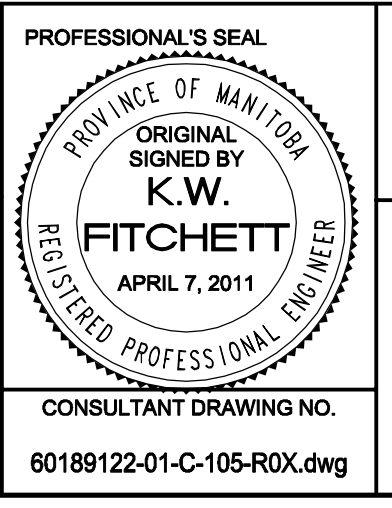
BID OPPORTUNITY NO. 260-2011

| 150 WM | WATERMAIN | 150 WM | HYDRANT | REDUCER | 150 WM | WATERMAIN | 150 WM | LOCATION APPROVED |
|--------|---------------------|--------|------------------|---------|--------|---------------------|--------|------------------------|
| ○ | HYDRANT VALVE | ○ | REDUCER COUPLING | + | ○ | HYDRANT VALVE | + | UNDERGROUND STRUCTURES |
| ○ | LAND DRAINAGE SEWER | ○ | ANODE | X | ○ | LAND DRAINAGE SEWER | X | |
| ○ | WASTE WATER SEWER | ○ | HYDRO | ○ | ○ | WASTE WATER SEWER | ○ | |
| ○ | MANHOLE | ○ | MTS | ○ | ○ | PAVEMENT CROWN | ○ | |
| ○ | CATCH BASIN | ○ | GAS | ○ | ○ | N/W PROPERTY LINE | ○ | |
| ○ | CURB INLET | ○ | TESTHOLE | ○ | ○ | S/E PROPERTY LINE | ○ | |
| ○ | CULVERT | ○ | LAMP STANDARD | ○ | ○ | N/W GUTTER | ○ | |
| ○ | PIPE ABANDONMENTS | ○ | TREE | ○ | ○ | S/E GUTTER | ○ | |
| ○ | SURVEY BAR | ○ | | ○ | ○ | | ○ | |
| ○ | EXISTING | ○ | LEGEND - PLAN | ○ | ○ | LEGEND - PROFILE | ○ | |

LOCATION APPROVED UNDERGROUND STRUCTURES
SUPR. U/G STRUCTURES DATE COMMITTEE
NOTE: LOCATION OF UNDERGROUND STRUCTURES AS SHOWN ARE BASED ON THE BEST INFORMATION AVAILABLE. BUT NO GUARANTEE IS GIVEN THAT ALL EXISTING UTILITIES ARE SHOWN OR THAT THE GIVEN LOCATIONS ARE EXACT. CONFIRMATION OF EXISTENCE AND EXACT LOCATION OF ALL INDIVIDUAL UTILITIES MUST BE OBTAINED FROM THE INDIVIDUAL UTILITIES BEFORE PROCEEDING WITH CONSTRUCTION.

| | | |
|-----------|-------------------|--|
| BM 63-018 | ELEV. 231.634m | 547156 - S.E. Cor. Grendell Ave. & Glenholme Cres. Tilt: on top of 0.50 m dia. 3.24 m dia pipe, 0.8m N. of S.L. of Grendell Ave. & 2.3 m E. of E.L. of Glenholme Cres. |
| 0 | ISSUED FOR TENDER | 11/04/06 GDL |
| A | ISSUED FOR REVIEW | 11/03/22 JP |
| NO. | REVISIONS | YYMMDD BY |

| | | | |
|-------------|-------|---------------------------|------------|
| DESIGNED BY | GSK | CHECKED BY | FMI |
| DRAWN BY | JP | APPROVED BY | CCM |
| HOR. SCALE | 1:250 | RELEASED FOR CONSTRUCTION | KAS ZUREK |
| VERT. SCALE | 1:50 | DATE | 2011/04/07 |



THE CITY OF WINNIPEG WATER AND WASTE DEPARTMENT

2011 WATERMAIN RENEWALS CONTRACT 6

WOODLAWN AVENUE STATION 0+220 TO 246m EAST OF MINNETONKA STREET

SHEET 5 OF 10
CITY DRAWING NUMBER D-12340