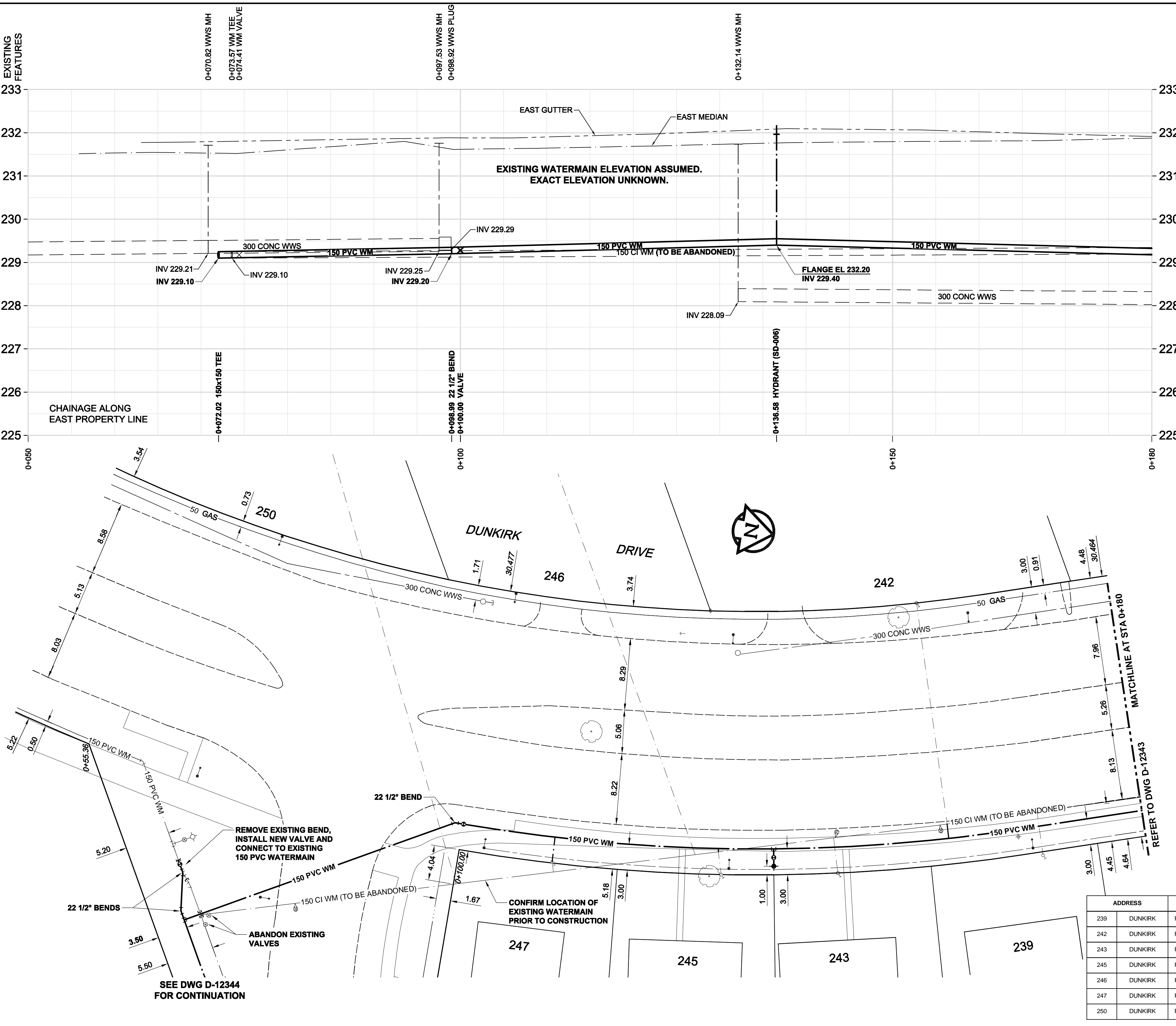


D SIZE 22" x 34" (559mm x 864mm)

PLOT: 11/04/07 12:33:10 PM

AECOM FILE NAME: 60189122-01-C-107-RDX.dwg Saved By: locasteg

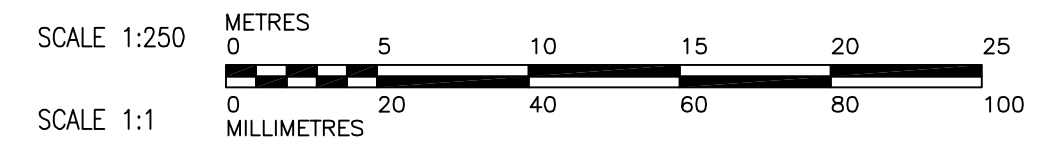


WARNING

IF POWER EQUIPMENT OR EXPLOSIVES ARE TO BE USED FOR EXCAVATION ON THIS PROJECT, THE CONTRACTOR MUST NOTIFY THE GAS COMPANY OF THE PROPOSED LOCATION OF EXCAVATION. TAKE PRECAUTION TO AVOID DAMAGE TO GAS COMPANY INSTALLATIONS. SEE PROVINCIAL REGULATION 140/92 FOR DETAILS

CONSTRUCTION NOTES:

1. EXPOSE WATERMAIN CONNECTIONS AND CONFIRM INVERTS PRIOR TO CONSTRUCTION
2. INSTALL WATERMAIN BY TRENCHLESS METHODS.
3. ALL MATERIALS SHALL CONFORM TO THE CITY OF WINNIPEG STANDARD CONSTRUCTION SPECIFICATIONS.
4. MINIMUM COVER TO TOP OF PROPOSED WATERMAIN SHALL BE 2.5m FROM STREET CENTERLINE.
5. INSTALL ALL HYDRANTS WITH FLANGE ELEVATION 50mm TO 150mm ABOVE FINISHED GRADE.
6. REPLACE ALL EXISTING LEAD SERVICES FROM THE PROPOSED WATERMAIN TO PROPERTY LINE.
7. NOTIFY ALL AFFECTED RESIDENTS AND BUSINESSES 24 HOURS IN ADVANCE OF ANY WATER SHUTDOWN OR DISRUPTION OF SERVICE.
8. LOCATION OF WATER SERVICES SHOWN ON DRAWINGS ARE APPROXIMATE. THE CONTRACTOR SHALL FIELD LOCATE ALL WATER SERVICES PRIOR TO CONSTRUCTION.
9. BACKFILL UNDER OR WITHIN 1.0m OF PAVEMENTS, INCLUDING SIDEWALKS SHALL BE CLASS 3 BACKFILL EXCEPT AS NOTED. BACKFILL IN BOULEVARDS SHALL BE CLASS 5 BACKFILL.



METRIC
WHOLE NUMBERS INDICATE MILLIMETRES
DECIMALIZED NUMBERS INDICATE METRES



BID OPPORTUNITY NO. 260-2011

ADDRESS	NATURE OF SERVICE	SIZE	MATERIAL	DISTANCE SC TO PROPERTY	POSITION OF SC (curb stop)			POSITION OF CC (corp)			COMMENTS:
					Long:	Short:	of	Long:	Short:	of	
239	DUNKIRK	RESIDENTIAL	3/4 in COPPER		Long: (4.6 m)	Short: (1.5 m)	of	Long: (1.5 m)	Short: (0.0 m)	of	
242	DUNKIRK	RESIDENTIAL	3/4 in COPPER		Long: (6.6 m)	Short: (2.4 m)	of	Long: (2.4 m)	Short: (0.0 m)	of	
243	DUNKIRK	RESIDENTIAL	3/4 in COPPER		Long: (3.4 m)	Short: (0.0 m)	of	Long: (0.0 m)	Short: (0.0 m)	of	
244	DUNKIRK	RESIDENTIAL	3/4 in COPPER		Long: (2.9 m)	Short: (0.0 m)	of	Long: (0.0 m)	Short: (0.0 m)	of	
246	DUNKIRK	RESIDENTIAL	3/4 in COPPER		Long: (2.7 m)	Short: (1.5 m)	of	Long: (1.5 m)	Short: (0.0 m)	of	REVERSE TAP
247	DUNKIRK	RESIDENTIAL	3/4 in COPPER								
250	DUNKIRK	RESIDENTIAL	3/4 in COPPER								

LEGEND - PLAN	LEGEND - PROFILE
150 WM WATERMAIN	150 WM WATERMAIN
HYDRANT VALVE	HYDRANT VALVE
300 LDS LAND DRAINAGE SEWER	300 LDS LAND DRAINAGE SEWER
250 WWS WASTE WATER SEWER	250 WWS WASTE WATER SEWER
MANHOLE	MANHOLE
CATCH BASIN	CATCH BASIN
CURB INLET	CURB INLET
CULVERT	CULVERT
PIPE ABANDONMENTS	PIPE ABANDONMENTS
SURVEY BAR	SURVEY BAR
EXISTING	NEW

LOCATION APPROVED UNDERGROUND STRUCTURES

DATE COMMITTEE

NOTE: LOCATION OF UNDERGROUND STRUCTURES AS SHOWN ARE BASED ON THE BEST INFORMATION AVAILABLE. BUT NO GUARANTEE IS GIVEN THAT ALL EXISTING UTILITIES ARE SHOWN OR THAT THE GIVEN LOCATIONS ARE EXACT. CONFIRMATION OF EXISTENCE AND EXACT LOCATION OF ALL SERVICES MUST BE OBTAINED FROM THE INDIVIDUAL UTILITIES BEFORE PROCEEDING WITH CONSTRUCTION.

BM 54-013	74M527 - Tbl in E. Conc. foundation of Norberry Auditorium, Norberry Dr. & St. Mary's Rd., 4.2 m N. of S.E. Cor. of Auditorium.
ELEV. 232.291m	
NO.	REVISIONS

DESIGNED BY	GSK	CHECKED BY	FMI
DRAWN BY	JP	APPROVED BY	CCM
HOR. SCALE	1:250	RELEASED FOR CONSTRUCTION	KAS ZUREK
VERT. SCALE	1:50	DATE	2011/04/07

PROFESSIONAL'S SEAL

ORIGINAL SIGNED BY

APRIL 7, 2011

CONSULTANT DRAWING NO. 60189122-01-C-107-RDX.dwg

THE CITY OF WINNIPEG WATER AND WASTE DEPARTMENT

2011 WATERMAIN RENEWALS CONTRACT 6

DUNKIRK DRIVE NORBERRY DRIVE TO STATION 0+180

SHEET 7 OF 10

CITY DRAWING NUMBER **D-12342** REV 0