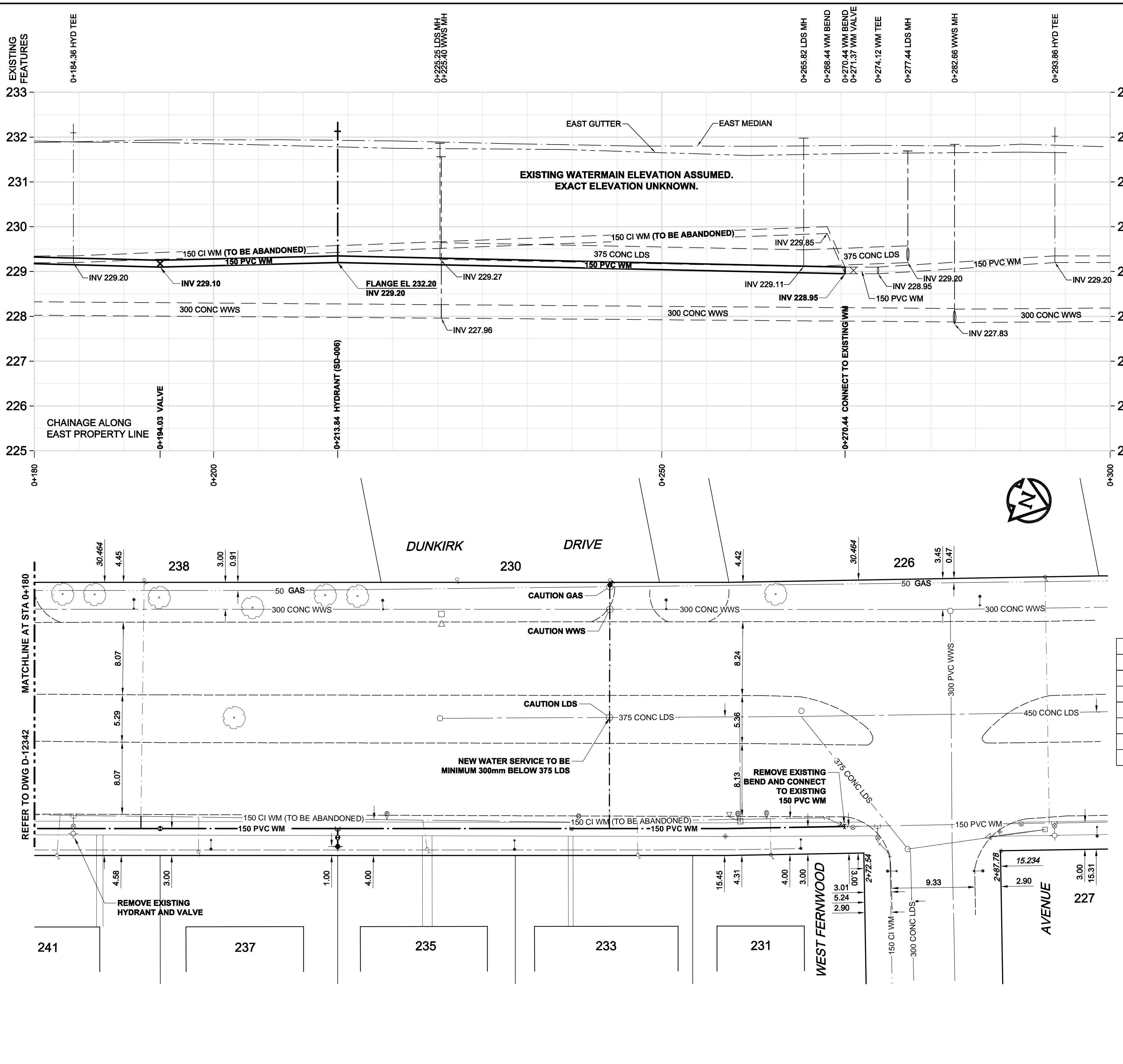


D SIZE 22" x 34" (559mm x 864mm)

PLOT: 11/04/07 12:32:36 PM

AECOM REVIEW DRFT CHK
AECOM FILE NAME: 60189122-01-C-108-RDX.dwg Saved By: lacosteg



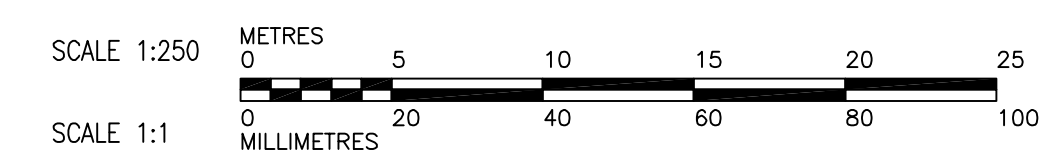
WARNING

IF POWER EQUIPMENT OR EXPLOSIVES ARE TO BE USED FOR EXCAVATION ON THIS PROJECT, THE CONTRACTOR MUST NOTIFY THE GAS COMPANY OF THE PROPOSED LOCATION OF EXCAVATION. TAKE PRECAUTION TO AVOID DAMAGE TO GAS COMPANY INSTALLATIONS. SEE PROVINCIAL REGULATION 140/92 FOR DETAILS

CONSTRUCTION NOTES:

1. EXPOSE WATERMAIN CONNECTIONS AND CONFIRM INVERTS PRIOR TO CONSTRUCTION
2. INSTALL WATERMAIN BY TRENCHLESS METHODS.
3. ALL MATERIALS SHALL CONFORM TO THE CITY OF WINNIPEG STANDARD CONSTRUCTION SPECIFICATIONS.
4. MINIMUM COVER TO TOP OF PROPOSED WATERMAIN SHALL BE 2.5m FROM STREET CENTERLINE.
5. INSTALL ALL HYDRANTS WITH FLANGE ELEVATION 50mm TO 150mm ABOVE FINISHED GRADE.
6. REPLACE ALL EXISTING LEAD SERVICES FROM THE PROPOSED WATERMAIN TO PROPERTY LINE.
7. NOTIFY ALL AFFECTED RESIDENTS AND BUSINESSES 24 HOURS IN ADVANCE OF ANY WATER SHUTDOWN OR DISRUPTION OF SERVICE.
8. LOCATION OF WATER SERVICES SHOWN ON DRAWINGS ARE APPROXIMATE. THE CONTRACTOR SHALL FIELD LOCATE ALL WATER SERVICES PRIOR TO CONSTRUCTION.
9. BACKFILL UNDER OR WITHIN 1.0m OF PAVEMENTS, INCLUDING SIDEWALKS SHALL BE CLASS 3 BACKFILL EXCEPT AS NOTED. BACKFILL IN BOULEVARDS SHALL BE CLASS 5 BACKFILL.

ADDRESS	NATURE OF SERVICE	SIZE	MATERIAL	DISTANCE SC TO PROPERTY	POSITION OF SC (curb stop)			POSITION OF CC (corp)			COMMENTS:		
					Long	Short	of	Long	Short	of			
230 DUNKIRK	RESIDENTIAL	1/2 in (13 mm)	COPPER		Long: (3.0 m)	N	of	NL	BUILDING	Long	Short	of	RENEW TO PL FROZEN SERVICE - Feb 27/94
231 DUNKIRK	RESIDENTIAL	3/4 in (19 mm)	COPPER		Long: (0.0 m)	S	of	NL	BUILDING	Long	Short	of	
233 DUNKIRK	RESIDENTIAL	3/4 in (19 mm)	COPPER		Long: (4.3 m)	S	of	NL	BUILDING	Long	Short	of	
235 DUNKIRK	RESIDENTIAL	3/4 in (19 mm)	COPPER		Long: (7.3 m)	S	of	NL	BUILDING	Long	Short	of	
237 DUNKIRK	RESIDENTIAL	3/4 in (19 mm)	COPPER		Long: (7.2 m)	S	of	NL	BUILDING	Long	Short	of	
238 DUNKIRK	RESIDENTIAL	1/2 in (13 mm)	COPPER		Long: (1.2 m)	S	of	NL	BUILDING	Long	Short	of	
241 DUNKIRK	RESIDENTIAL	3/4 in (19 mm)	COPPER		Long: (3.0 m)	S	of	NL	BUILDING	Long	Short	of	



METRIC
WHOLE NUMBERS INDICATE MILLIMETRES
DECIMALIZED NUMBERS INDICATE METRES



BID OPPORTUNITY NO. 260-2011

LEGEND - PLAN	LEGEND - PROFILE	LEGEND - PLAN	LEGEND - PROFILE
150 WM WATERMAIN	150 WM WATERMAIN	150 WM WATERMAIN	150 WM WATERMAIN
HYDRANT VALVE	HYDRANT VALVE	HYDRANT VALVE	HYDRANT VALVE
300 LDS LAND DRAINAGE SEWER	300 LDS LAND DRAINAGE SEWER	300 LDS LAND DRAINAGE SEWER	300 LDS LAND DRAINAGE SEWER
250 WWS WASTE WATER SEWER	250 WWS WASTE WATER SEWER	250 WWS WASTE WATER SEWER	250 WWS WASTE WATER SEWER
MANHOLE	MANHOLE	MANHOLE	MANHOLE
CATCH BASIN	CATCH BASIN	CATCH BASIN	CATCH BASIN
CURB INLET	CURB INLET	CURB INLET	CURB INLET
CULVERT	CULVERT	CULVERT	CULVERT
PIPE ABANDONMENTS	PIPE ABANDONMENTS	PIPE ABANDONMENTS	PIPE ABANDONMENTS
SURVEY BAR	SURVEY BAR	SURVEY BAR	SURVEY BAR
EXISTING	NEW	EXISTING	NEW

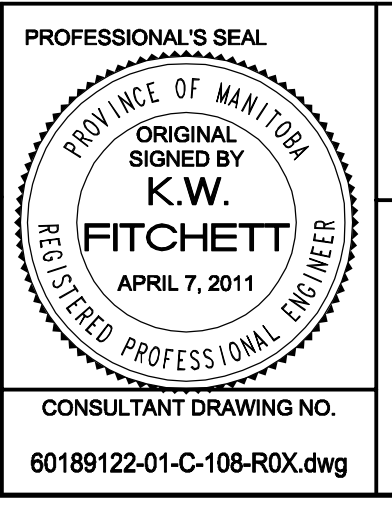
LOCATION APPROVED UNDERGROUND STRUCTURES

SUPR. U/G STRUCTURES DATE COMMITTEE

NOTE: LOCATION OF UNDERGROUND STRUCTURES AS SHOWN ARE BASED ON THE BEST INFORMATION AVAILABLE. BUT NO GUARANTEE IS GIVEN THAT ALL EXISTING UTILITIES ARE SHOWN OR THAT THE GIVEN LOCATIONS ARE EXACT. CONFIRMATION OF EXISTENCE AND EXACT LOCATION OF ALL SERVICES MUST BE OBTAINED FROM THE INDIVIDUAL UTILITIES BEFORE PROCEEDING WITH CONSTRUCTION.

BM 54-013	74M527 - Tbl in E. Conc. foundation of Norberry Auditorium, Norberry Dr. & St. Mary's Rd., 4.2 m N. of S.E. Cor. of Auditorium.
ELEV. 232.291m	
NO.	REVISIONS
0	ISSUED FOR TENDER 11/04/06 GDL
A	ISSUED FOR REVIEW 11/03/22 JP
BY	DATE

AECOM	DESIGNED BY GSK	CHECKED BY FMI
	DRAWN BY JP	APPROVED BY CCM
	HOR. SCALE 1:250	RELEASED FOR CONSTRUCTION
	VERT. SCALE 1:50	KAS ZUREK
	DATE 2011/04/07	DATE 2011/04/07



THE CITY OF WINNIPEG WATER AND WASTE DEPARTMENT

2011 WATERMAIN RENEWALS CONTRACT 6

DUNKIRK DRIVE STATION 0+180 TO WEST FERNWOOD AVENUE

SHEET 8 OF 10
CITY DRAWING NUMBER
D-12343

CONSULTANT DRAWING NO. 60189122-01-C-108-RDX.dwg