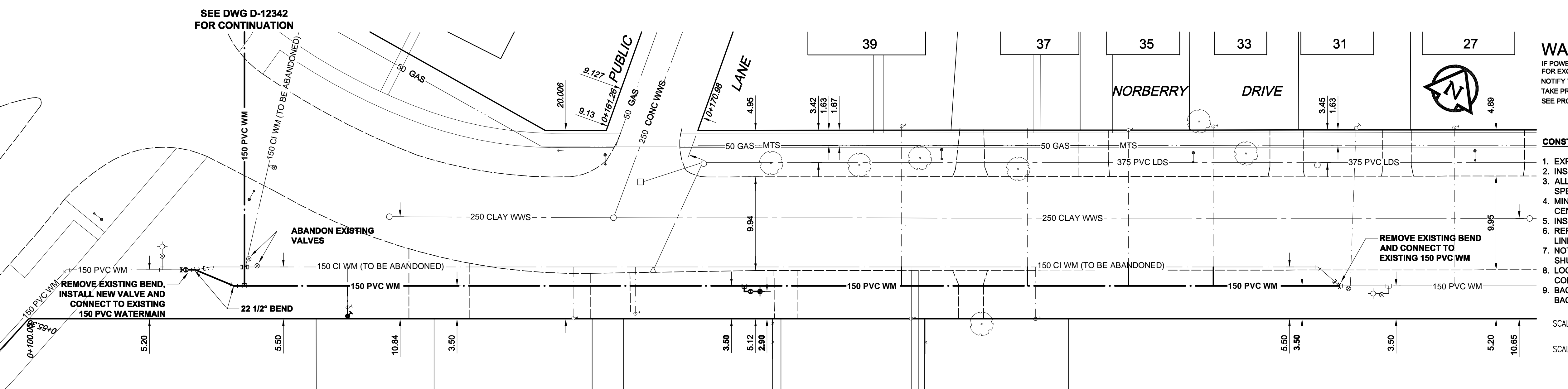
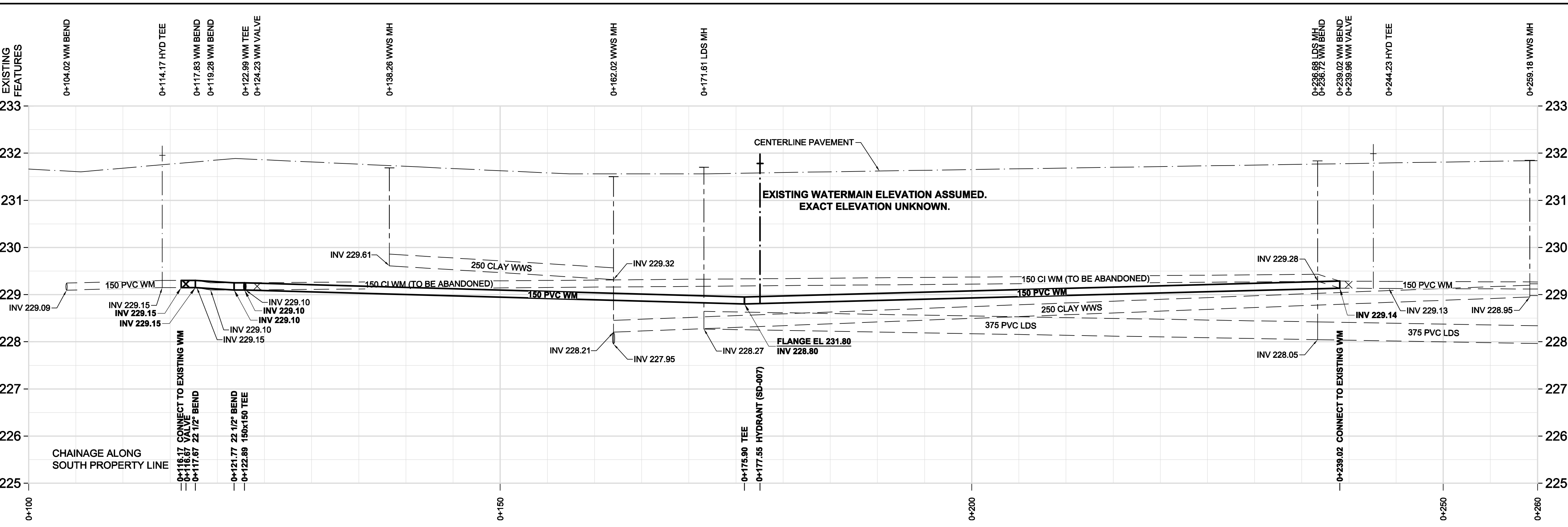


D SIZE 22" x 34" (559mm x 864mm)

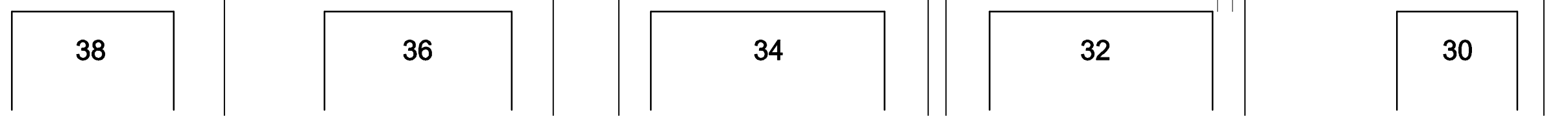
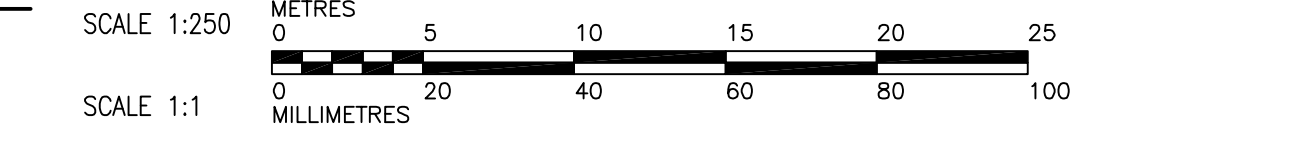
PLOT: 11/04/07 12:32:02 PM

AECOM FILE NAME: 60189122-01-C-109-RDX.dwg Saved By: locostg



WARNING
 IF POWER EQUIPMENT OR EXPLOSIVES ARE TO BE USED FOR EXCAVATION ON THIS PROJECT, THE CONTRACTOR MUST NOTIFY THE GAS COMPANY OF THE PROPOSED LOCATION OF EXCAVATION. TAKE PRECAUTION TO AVOID DAMAGE TO GAS COMPANY INSTALLATIONS. SEE PROVINCIAL REGULATION 140/92 FOR DETAILS.

- CONSTRUCTION NOTES:**
1. EXPOSE WATERMAIN CONNECTIONS AND CONFIRM INVERTS PRIOR TO CONSTRUCTION
 2. INSTALL WATERMAIN BY TRENCHLESS METHODS.
 3. ALL MATERIALS SHALL CONFORM TO THE CITY OF WINNIPEG STANDARD CONSTRUCTION SPECIFICATIONS.
 4. MINIMUM COVER TO TOP OF PROPOSED WATERMAIN SHALL BE 2.5m FROM STREET CENTERLINE.
 5. INSTALL ALL HYDRANTS WITH FLANGE ELEVATION 50mm TO 150mm ABOVE FINISHED GRADE.
 6. REPLACE ALL EXISTING LEAD SERVICES FROM THE PROPOSED WATERMAIN TO PROPERTY LINE.
 7. NOTIFY ALL AFFECTED RESIDENTS AND BUSINESSES 24 HOURS IN ADVANCE OF ANY WATER SHUTDOWN OR DISRUPTION OF SERVICE.
 8. LOCATION OF WATER SERVICES SHOWN ON DRAWINGS ARE APPROXIMATE. THE CONTRACTOR SHALL FIELD LOCATE ALL WATER SERVICES PRIOR TO CONSTRUCTION.
 9. BACKFILL UNDER OR WITHIN 1.0m OF PAVEMENTS, INCLUDING SIDEWALKS SHALL BE CLASS 3 BACKFILL EXCEPT AS NOTED. BACKFILL IN BOULEVARDS SHALL BE CLASS 5 BACKFILL.



ADDRESS	NATURE OF SERVICE	SIZE	MATERIAL	DISTANCE SC TO PROPERTY	POSITION OF SC (curb stop)			POSITION OF CC (corp)			COMMENTS:	
					Long	Short	W of EL	Long	Short	W of EL		
30 NORBERRY	RESIDENTIAL	3/4 in (19 mm)	COPPER		Long	(3.0 m)	W of EL	Long				
31 NORBERRY	RESIDENTIAL	3/4 in (19 mm)	COPPER		Long	(2.0 m)	W of EL	Long	(0.6 m)	W of SC		
32 NORBERRY	RESIDENTIAL	3/4 in (19 mm)	COPPER		Long	(2.4 m)	W of EL	Long				
33 NORBERRY	RESIDENTIAL	3/4 in (19 mm)	COPPER		Long	(2.4 m)	E of WL	Long				
34 NORBERRY	RESIDENTIAL	3/4 in (19 mm)	COPPER		Long	(0.6 m)	W of WL	Long				
35 NORBERRY	RESIDENTIAL	3/4 in (19 mm)	COPPER		Long	(2.4 m)	E of WL	Long				
36 NORBERRY	RESIDENTIAL	1/2 in (13 mm)	COPPER		Long		OPP of EL	Long				
37 NORBERRY	RESIDENTIAL	3/4 in (19 mm)	COPPER		Long	(3.0 m)	E of WL	Long				
38 NORBERRY	RESIDENTIAL	1/2 in (13 mm)	LEAD		Long	(1.4 m)	E of WL	Long				RENEW TO PL
39 NORBERRY	RESIDENTIAL	3/4 in (19 mm)	COPPER		Long	(3.4 m)	E of WL	Long				

AECOM
 Certificate of Authorization
 AECOM Canada Ltd.
 No. 4671 Date: APRIL 7, 2011
 BID OPPORTUNITY NO. 260-2011

METRIC
 WHOLE NUMBERS INDICATE MILLIMETRES
 DECIMALIZED NUMBERS INDICATE METRES

150 WM	WATERMAIN	150 WM	EXISTING	CURB STOP	NEW	150 WM	WATERMAIN	150 WM	EXISTING	LOCATION APPROVED UNDERGROUND STRUCTURES
Hydrant	HYDRANT	Hydrant	Hydrant	Reducer	REDUCER	Hydrant	HYDRANT	Hydrant	Hydrant	DATE COMMITTEE
Valve	VALVE	Valve	Valve	Coupling	COUPLING	Valve	VALVE	Valve	Valve	NOTE: LOCATION OF UNDERGROUND STRUCTURES AS SHOWN ARE BASED ON THE BEST INFORMATION AVAILABLE. BUT NO GUARANTEE IS GIVEN THAT ALL EXISTING UTILITIES ARE SHOWN OR THAT THE GIVEN LOCATIONS ARE EXACT. CONFIRMATION OF EXISTENCE AND EXACT LOCATION OF ALL SERVICES MUST BE OBTAINED FROM THE INDIVIDUAL UTILITIES BEFORE PROCEEDING WITH CONSTRUCTION.
300 LDS	LAND DRAINAGE SEWER	300 LDS	300 LDS	Anode	ANODE	300 LDS	LAND DRAINAGE SEWER	300 LDS	300 LDS	
250 WWS	WASTE WATER SEWER	250 WWS	250 WWS	Hydro	HYDRO	250 WWS	WASTE WATER SEWER	250 WWS	250 WWS	
Manhole	MANHOLE	Manhole	Manhole	MTS	MTS	Manhole	MANHOLE	Manhole	Manhole	
Catch Basin	CATCH BASIN	Catch Basin	Catch Basin	Gas	GAS	Catch Basin	CATCH BASIN	Catch Basin	Catch Basin	
Curb Inlet	CURB INLET	Curb Inlet	Curb Inlet	Testhole	TESTHOLE	Curb Inlet	CURB INLET	Curb Inlet	Curb Inlet	
Culvert	CULVERT	Culvert	Culvert	Lamp Standard	LAMP STANDARD	Culvert	CULVERT	Culvert	Culvert	
Pipe Abandments	PIPE ABANDMENTS	Pipe Abandments	Pipe Abandments	Tree	TREE	Pipe Abandments	PIPE ABANDMENTS	Pipe Abandments	Pipe Abandments	
Survey Bar	SURVEY BAR	Survey Bar	Survey Bar			Survey Bar	SURVEY BAR	Survey Bar	Survey Bar	
Existing Legend - Plan	EXISTING LEGEND - PLAN	New Legend - Plan	NEW	Existing Legend - Profile	EXISTING	New Legend - Profile	NEW	Existing Legend - Profile	EXISTING	

BM 54-013	74MS27 - Tbl in E. Conc. foundation of Norberry Auditorium, Norberry Dr. & St. Mary's Rd., 4.2 m N. of S.E. Cor. of Auditorium.		
ELEV. 232.291m			
ISSUED FOR TENDER	11/04/06	GDL	
ISSUED FOR REVIEW	11/03/22	JP	
REVISIONS	YYMMDD	BY	

DESIGNED BY	GSK	CHECKED BY	FMI
DRAWN BY	JP	APPROVED BY	CCM
HOR. SCALE	1:250	RELEASED FOR CONSTRUCTION	
VERT. SCALE	1:50	KAS ZUREK	
DATE		DATE	2011/04/07

PROFESSIONAL'S SEAL
 PROVINCE OF MANITOBA
 ORIGINAL SIGNED BY
K.W. FITCHETT
 APRIL 7, 2011
 REGISTERED PROFESSIONAL ENGINEER
 CONSULTANT DRAWING NO.
 60189122-01-C-109-RDX.dwg

THE CITY OF WINNIPEG
 WATER AND WASTE DEPARTMENT
 2011 WATERMAIN RENEWALS
 CONTRACT 6
 NORBERRY DRIVE
 DUNKIRK DRIVE TO 131m EAST OF DUNKIRK DRIVE

SHEET 9 OF 10
 CITY DRAWING NUMBER
D-12344
 REV 0